

# THE 2021 POSITIVELY AWARE HIV DRUG CHART



Each drug is recommended for use in combination with other antiretrovirals (except any single-tablet regimen, including Atripla, Biktarvy, Complera, Delstrigo, Dovato, Genvoya, Juluca, Odefsey, Stribild, Symfi Lo, Symtuza, and Triumeq). For a complete description of DHHS drug recommendations, go to [aidsinfo.nih.gov/guidelines](https://aidsinfo.nih.gov/guidelines). Consult with a physician about which drug therapy and dose is appropriate for you; see drug page or package insert for complete information. Drug chart information is current as of February 5, 2021. Look up your drug by adding its name after typing [positivelyaware.com/](https://positivelyaware.com/) into your browser (for example, [positivelyaware.com/triumeq](https://positivelyaware.com/triumeq)).

## These medications contain a complete regimen all in one:

### SINGLE-TABLET REGIMENS (Multiple drug classes; see pregnancy information for integrase inhibitors below.)



**Atripla** ✓ RECOMMENDED INITIAL REGIMEN IN CERTAIN CLINICAL SITUATIONS  
efavirenz/emtricitabine/tenofovir DF (EFV/FTC/TDF)

One tablet (600 mg efavirenz/200 mg emtricitabine/300 mg tenofovir DF), once daily. Take on an empty stomach, preferably at bedtime.



**Complera** ✓ RECOMMENDED INITIAL REGIMEN IN CERTAIN CLINICAL SITUATIONS IF VIRAL LOAD <100,000 COPIES/mL  
rilpivirine/emtricitabine/tenofovir DF (RPV/FTC/TDF)

One tablet (25 mg rilpivirine/200 mg emtricitabine/300 mg tenofovir DF), once daily. Take with a meal.



**Dovato** ★ RECOMMENDED INITIAL REGIMEN FOR MOST PEOPLE EXCEPT THOSE WITH VIRAL LOAD >500,000 COPIES/mL, HBV CO-INFECTION, OR BEFORE RESULTS OF GENOTYPIC RESISTANCE OR HBV TESTING  
dolutegravir/lamivudine (DTG/3TC)

One tablet (50 mg dolutegravir/300mg lamivudine), once daily. Take with or without food.



**Juluca** ✓ RECOMMENDED AS CONTINUATION THERAPY FOR PEOPLE WITH UNDETECTABLE HIV VIRAL LOAD FOR AT LEAST 6 MONTHS  
dolutegravir/rilpivirine (DTG/RPV)

One tablet (50 mg dolutegravir/25 mg rilpivirine), once daily. For adults who are virologically suppressed on a current ART regimen for at least 6 months and who have no history of treatment failure or resistance mutations associated with rilpivirine or dolutegravir. Take with a meal.



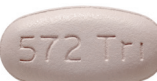
**Stribild** ✓ RECOMMENDED INITIAL REGIMEN IN CERTAIN CLINICAL SITUATIONS  
elvitegravir/cobicistat/emtricitabine/tenofovir DF (EVG/COBI/FTC/TDF)

One tablet (150 mg elvitegravir/150 mg cobicistat/200 mg emtricitabine/300 mg tenofovir DF), once daily. Take with food.



**Symfi Lo** ✓ RECOMMENDED INITIAL REGIMEN IN CERTAIN CLINICAL SITUATIONS  
efavirenz/lamivudine/tenofovir DF (EFV/3TC/TDF)

One tablet (400 mg efavirenz/300 mg lamivudine/300 mg tenofovir DF), once daily. Should be taken on an empty stomach, preferably at bedtime.



**Triumeq** ★ RECOMMENDED INITIAL REGIMEN FOR MOST PEOPLE IF HLA-B\*57:01 NEGATIVE  
dolutegravir/abacavir/lamivudine (DTG/ABC/3TC)

One tablet (50 mg dolutegravir/600 mg abacavir/300 mg lamivudine), once daily. One additional 50 mg tablet of Tivicay 12 hours apart in people with viral resistance to INSTIs or when taken with certain other medications. Take with or without food.



**Biktarvy** ★ RECOMMENDED INITIAL REGIMEN FOR MOST PEOPLE  
bictegravir/emtricitabine/tenofovir alafenamide (BIC/FTC/TAF)

One tablet (50 mg bictegravir/200 mg emtricitabine/25 mg tenofovir alafenamide), once daily. For people who are treatment-naïve, or on treatment and virologically suppressed for at least 3 months, with no history of treatment failure or resistance mutations associated with components of Biktarvy. Take with or without food.



**Delstrigo** ✓ RECOMMENDED INITIAL REGIMEN IN CERTAIN CLINICAL SITUATIONS  
doravirine/lamivudine/tenofovir DF (DOR/3TC/TDF)

One tablet (100 mg doravirine/300 mg lamivudine/300 mg tenofovir DF), once daily. Take with or without food.



**Genvoya** ✓ RECOMMENDED INITIAL REGIMEN IN CERTAIN CLINICAL SITUATIONS  
elvitegravir/cobicistat/emtricitabine/tenofovir alafenamide (EVG/COBI/FTC/TAF)

One tablet (150 mg elvitegravir/150 mg cobicistat/200 mg emtricitabine/10 mg tenofovir alafenamide), once daily. Take with food.



**Odefsey** ✓ RECOMMENDED INITIAL REGIMEN IN CERTAIN CLINICAL SITUATIONS IF VIRAL LOAD <100,000 COPIES/mL  
rilpivirine/emtricitabine/tenofovir alafenamide (RPV/FTC/TAF)

One tablet (25 mg rilpivirine/200 mg emtricitabine/25 mg tenofovir alafenamide), once daily. Take with a meal.



**Symfi** ✓ RECOMMENDED INITIAL REGIMEN IN CERTAIN CLINICAL SITUATIONS  
efavirenz/lamivudine/tenofovir DF (EFV/3TC/TDF)

One tablet (600 mg efavirenz/300 mg lamivudine/300 mg tenofovir DF), once daily. Should be taken on an empty stomach, preferably at bedtime.



**Symtuza** ✓ RECOMMENDED INITIAL REGIMEN IN CERTAIN CLINICAL SITUATIONS  
darunavir/cobicistat/emtricitabine/tenofovir alafenamide (DRV/COBI/FTC/TAF)

One tablet (800 mg darunavir/150 mg cobicistat/200 mg emtricitabine/10 mg tenofovir alafenamide), once daily. Take with food.

### LONG-ACTING REGIMEN



**Cabenuva** ● DHHS RECOMMENDATION NOT YET ESTABLISHED AT PRESS TIME  
cabotegravir long-acting/rilpivirine long-acting (CAB LA/RPV LA)

One-month oral lead-in with food, then two intramuscular gluteal (butt) injections once every four weeks with or without food. Consists of one injection of long-acting cabotegravir and one injection of long-acting rilpivirine. For switching when suppressed, no history of treatment failure, and no resistance to components. See doses on drug page in the POSITIVELY AWARE HIV Drug Guide.

## These medications must be taken in combination with other HIV meds:

### INTEGRASE INHIBITORS (Pregnancy testing should be performed in those of childbearing potential prior to initiation.)



**Isentress HD** ★ RECOMMENDED AS A COMPONENT OF INITIAL REGIMEN FOR MOST PEOPLE  
and Isentress  
raltegravir (RAL)

**Isentress HD:** Two 600 mg film-coated tablets, once daily.  
**Isentress:** One 400 mg film-coated tablet, twice daily. Take with or without food.



**Tivicay** ★ RECOMMENDED AS A COMPONENT OF INITIAL REGIMEN FOR MOST PEOPLE  
dolutegravir (DTG)

One 50 mg tablet, once daily for people on HIV therapy for the first time or treatment-experienced without previous INSTI resistance. Twice-daily dosing for people who have viral resistance to INSTIs or when taken with certain other medications. Take with or without food.

### PROTEASE INHIBITORS (Boosted and unboosted)



**Evotaz** ✓ RECOMMENDED AS A COMPONENT OF INITIAL REGIMEN IN CERTAIN CLINICAL SITUATIONS  
atazanavir/cobicistat (ATV/COBI)

One tablet (300 mg atazanavir/150 mg cobicistat), once daily. Take with food.



**Prezobix** ✓ RECOMMENDED AS A COMPONENT OF INITIAL REGIMEN IN CERTAIN CLINICAL SITUATIONS  
darunavir/cobicistat (DRV/COBI)

One tablet (800 mg darunavir/150 mg cobicistat), once daily. Take with food.



**Prezista** ✓ RECOMMENDED AS A COMPONENT OF INITIAL REGIMEN IN CERTAIN CLINICAL SITUATIONS  
darunavir (DRV)

One 800 mg tablet with 100 mg Norvir (ritonavir) or 150 mg Tybost, once daily for first-time therapy and treatment-experienced adults without Prezista-related resistance; or one 600 mg tablet plus 100 mg Norvir, twice daily for treatment-experienced people with Prezista-related resistance. Prezista must be taken with Norvir or Tybost. Take with food.



**Reyataz** ✓ RECOMMENDED AS A COMPONENT OF INITIAL REGIMEN IN CERTAIN CLINICAL SITUATIONS  
atazanavir sulfate (ATV)

One 300 mg capsule plus 100 mg Norvir (ritonavir) or 150 mg Tybost, once daily; or two 200 mg capsules (without boosting), once daily for treatment-naïve adults (see the POSITIVELY AWARE HIV Drug Guide for details). Take with food. **GENERIC IS AVAILABLE.**

### PK ENHANCERS (Boosters)



**Tybost** ✓ USED ONLY AS A BOOSTER FOR OTHER DRUGS; RECOMMENDED AS A COMPONENT OF INITIAL REGIMEN IN CERTAIN CLINICAL SITUATIONS  
cobicistat (COBI)

Used only for boosting—not an antiretroviral. 150 mg once daily taken at the same time with either Prezista 800 mg or Reyataz 300 mg. Take with food.



**Norvir** ✓ USED ONLY AS A BOOSTER FOR OTHER DRUGS; RECOMMENDED AS A COMPONENT OF INITIAL REGIMEN IN CERTAIN CLINICAL SITUATIONS  
ritonavir (RTV)

Used for boosting, also an antiretroviral. 100–200 mg, dosed once or twice daily with another unboosted PI. Must be taken with food. **GENERIC IS AVAILABLE.**

### NUCLEOSIDE REVERSE TRANSCRIPTASE INHIBITORS (“Nukes”) ★ All “nukes” are recommended.



**Cimduo**  
lamivudine/tenofovir DF (3TC/TDF)

★ RECOMMENDED AS A COMPONENT OF INITIAL REGIMEN FOR MOST PEOPLE WHEN COMBINED WITH TIVICAY, ISENTRESS HD, OR ISENTRESS

One tablet (300 mg lamivudine/300 mg tenofovir DF), once daily. Take with or without food.



**Descovy**  
emtricitabine/tenofovir alafenamide (FTC/TAF)

★ RECOMMENDED AS A COMPONENT OF INITIAL REGIMEN FOR MOST PEOPLE

One tablet (200 mg emtricitabine/25 mg tenofovir alafenamide), once daily. Take with or without food.



**Emtriva**  
emtricitabine (FTC)

★ RECOMMENDED AS A COMPONENT OF INITIAL REGIMEN FOR MOST PEOPLE

One 200 mg capsule, once daily. Take with or without food. **GENERIC IS AVAILABLE.**



**EpiVir**  
lamivudine (3TC)

★ RECOMMENDED AS A COMPONENT OF INITIAL REGIMEN FOR MOST PEOPLE

One 300 mg tablet, once daily; or one 150 mg tablet, twice daily. Take with or without food. **GENERIC IS AVAILABLE.**



**EpiCom**  
abacavir/lamivudine (ABC/3TC)

★ RECOMMENDED AS A COMPONENT OF INITIAL REGIMEN FOR MOST PEOPLE IF HLA-B\*57:01-NEGATIVE WHEN USED IN COMBINATION WITH DOLUTEGRAVIR (AS TRIUMEQ)

One tablet (600 mg abacavir/300 mg lamivudine), once daily. Take with or without food. **GENERIC IS AVAILABLE.**



**Truvada**  
emtricitabine/tenofovir DF (FTC/TDF)

★ RECOMMENDED AS A COMPONENT OF INITIAL REGIMEN FOR MOST PEOPLE

One tablet (200 mg emtricitabine/300 mg tenofovir DF), once daily. Take with or without food. **GENERIC IS AVAILABLE.**



**Viread**  
tenofovir disoproxil fumarate (TDF)

★ RECOMMENDED AS A COMPONENT OF INITIAL REGIMEN FOR MOST PEOPLE

One 300 mg tablet, once daily. Take with or without food. **GENERIC IS AVAILABLE.**



**Ziagen**  
abacavir sulfate (ABC)

★ RECOMMENDED AS A COMPONENT OF INITIAL REGIMEN FOR MOST PEOPLE IF HLA-B\*57:01-NEGATIVE WHEN USED IN COMBINATION WITH DOLUTEGRAVIR AND LAMIVUDINE (AS TRIUMEQ)

Two 300 mg tablets, once daily; or one 300 mg tablet, twice daily. Take with or without food. **GENERIC IS AVAILABLE.**



**Temixys**  
lamivudine/tenofovir DF (3TC/TDF)

★ RECOMMENDED AS A COMPONENT OF INITIAL REGIMEN FOR MOST PEOPLE WHEN COMBINED WITH TIVICAY, ISENTRESS HD, OR ISENTRESS

One tablet (300 mg lamivudine/300 mg tenofovir DF), once daily. Take with or without food.

### NON-NUCLEOSIDE REVERSE TRANSCRIPTASE INHIBITORS (“Non-nukes”)



**Edurant** ✓ RECOMMENDED AS A COMPONENT OF INITIAL REGIMEN IN CERTAIN CLINICAL SITUATIONS (AS A COMPONENT OF DELSTRIGO, OR IN COMBINATION WITH DESCOVY, TRUVADA, CIMDUO, OR TEMIXYS)  
rilpivirine (RPV)

One 25 mg tablet, once daily. Take with a meal.



**Intelence** ✓ FOR TREATMENT-EXPERIENCED PEOPLE WITH VIRAL STRAINS RESISTANT TO AN NNRTI AND OTHER ANTIRETROVIRAL DRUGS ONLY  
etravirine (ETR)

One 200 mg tablet, twice daily. Take following a meal.



**Pifeltro** ✓ RECOMMENDED AS A COMPONENT OF INITIAL REGIMEN IN CERTAIN CLINICAL SITUATIONS (AS A COMPONENT OF DELSTRIGO, OR IN COMBINATION WITH DESCOVY, TRUVADA, CIMDUO, OR TEMIXYS)  
doravirine (DOR)

One 100 mg tablet, once daily. Take with or without food.



**Sustiva** ✓ RECOMMENDED AS A COMPONENT OF INITIAL REGIMEN IN CERTAIN CLINICAL SITUATIONS (AS A COMPONENT OF ATRIPLA, SYMFI, OR SYMFI LO, OR IN COMBINATION WITH DESCOVY, TRUVADA, CIMDUO, OR TEMIXYS)  
efavirenz (EFV)

One 600 mg tablet, once daily. Take on an empty stomach, preferably at bedtime. **GENERIC IS AVAILABLE.**

### ENTRY/ATTACHMENT INHIBITORS



**Selzentry**  
maraviroc (MVC)

▼ RECOMMENDED AS COMPONENT OF ART FOR TREATMENT OF CCR5-TROPIC VIRUS IN TREATMENT-EXPERIENCED PEOPLE

ENTRY INHIBITOR: CCR5 ANTAGONIST

150, 300, or 600 mg (available in 150 and 300 mg tablets), twice daily, depends on other medications used (see the POSITIVELY AWARE HIV Drug Guide for details). Take with or without food.



**Trogarzo**  
ibalizumab-uiyk (IBA)

▼ FOR HEAVILY TREATMENT-EXPERIENCED PEOPLE

LONG-ACTING ENTRY INHIBITOR CD4 POST-ATTACHMENT INHIBITOR

Administered once every two weeks via intravenous infusion. Treatment begins with an IV loading (starting) dose of 2,000 mg, followed by an 800 mg IV infusion maintenance dose given every two weeks thereafter.



**Rukobia**  
fostemsavir (FTR)

▼ FOR HEAVILY TREATMENT-EXPERIENCED PEOPLE ATTACHMENT INHIBITOR

One 600 mg tablet twice daily. For heavily treatment-resistant virus on a failing HIV regimen due to resistance, intolerance, or safety considerations. Take with or without food.

### LEGACY DRUGS The following drugs are no longer or rarely prescribed:



**Agenerase**  
amprenavir (APV)



**Aptivus**  
tipranavir (TPV)



**Combivir**  
lamivudine/zidovudine (3TC/AZT)



**Crixivan**  
indinavir (IDV)



**Fuzeon**  
enfuvirtide (T-20, or ENF)



**Invirase**  
saquinavir (SQV)



**Kaletra**  
lopinavir/ritonavir (LPV/r)



**Lexiva**  
fosamprenavir calcium (FPV)



**Rescriptor**  
delavirdine (DLV)



**Retrovir**  
zidovudine (AZT, or ZDV)



**Trizivir**  
abacavir/lamivudine/zidovudine (ABC/3TC/AZT)



**Videx EC**  
didanosine (ddI)



**Viracept**  
nelfinavir (NFV)



**Viramune XR**  
nevirapine (NVP)



**Zerit**  
stavudine (d4T)



SPONSOR OF THE 2021 POSITIVELY AWARE HIV DRUG CHART  
For a list of Walgreens pharmacies specializing in HIV/AIDS care and for other resources, go to [HIV.walgreens.com](https://www.walgreens.com). For the complete 2021 POSITIVELY AWARE HIV Drug Guide, go to [positivelyaware.com](https://positivelyaware.com). To order more copies of the 2021 POSITIVELY AWARE HIV Drug Chart or HIV Drug Guide, go to [positivelyaware.com/subscribe](https://positivelyaware.com/subscribe). See full prescribing information, including boxed warnings, at [dailymed.nlm.nih.gov](https://dailymed.nlm.nih.gov).