

Legislative Commission on the Interdisciplinary Primary Care Workforce

October 22, 2020 2:00-4:00pm – Zoom Conference

Call in information:

Join Zoom Meeting

<https://nh-dhhs.zoom.us/j/8089469129?pwd=dkUvdUhzTENqQmQ2QzhGYU1HeDA5UT09>

One tap mobile

+13126266799,,8089469129#,,,,,0#,,200415# US (Chicago)

+16465588656,,8089469129#,,,,,0#,,200415# US (New York)

Dial: +1 646 558 8656 US (New York)

Meeting ID: 808 946 9129

Passcode: 200415

Find your local number: <https://nh-dhhs.zoom.us/u/aeltia0PsF>

Dial *6 to mute or unmute if you connect by phone

Agenda

- 2:00 - 2:15 **Read Emergency Order #12 Checklist and Take Roll Call Attendance**
- 2:15 – 2:45 **Safety-Net Primary Care Provider Update** - Kristine E. Stoddard, NH Director of Public Policy, Bi-State Primary Care Association
- 2:45 - 3:20 **Cheshire Residency Update** – Cathy Morrow, MD, Chair of Community and Family Medicine, Geisel Medical School
- 3:20 – 3:55 **Area Health Education Center (AHEC) Update** – Kristina Fjeld-Sparks, Director, NH AHEC, Paula Smith, Director Southern NH AHEC, April Mottram, Director, Northern NH AHEC
- 3:55 - 4:00 **Updates & Adjourn**

Next meeting: Thursday November 19, 2:00-4:00pm

State of New Hampshire
COMMISSION ON PRIMARY CARE WORKFORCE ISSUES

DATE: October 22, 2020

TIME: 2:00 – 4:00pm

LOCATION: Zoom Conferencing

Meeting Notes

TO: Members of the Commission and Guests

FROM: Danielle Weiss

MEETING DATE: October 22, 2020

Members of the Commission:

Rep. Polly Campion, NH House of Representatives

Mary Bidgood-Wilson, ARNP – Chair

Alisa Druzba, Administrator, Rural Health and Primary Care Section – Vice-Chair

Kim Mohan, Executive Director, NH Nurse Practitioner Association

Don Kolisch, MD, Geisel Medical School

Kristina Fjeld-Sparks, Director, NH AHEC

Jeanne Ryer, NH Citizens Health Initiative

Mike Ferrara, Dean, UNH College of Health and Human Services

Bill Gunn, NH Mental Health Coalition

Tom Manion, CEO, New London Hospital

Tyler Brannen, Dept. of Insurance

Pamela Dinapoli, NH Nurses Association

Dianne Castrucci, NH Alcohol and Drug Abuse Counselors Association

Laurie Harding, Upper Valley Community Nursing Project

Guests:

Leslie Melby, NH Medicaid

Paula Smith, SNH AHEC

April Mottram, Executive Director, NNH AHEC

Katherine Barta, Deputy Director, NH AHEC

Paula Minnehan, NH Hospital Association

Anne Marie Mercuri, QI Nurse, Maternal and Child Health Section

Marcy Doyle, UNH, Health Policy & Practices

Geoff Vercauteren, Director of Workforce Development, Catholic Medical Center

Catrina Watson, NH Medical Society

Peter Mason, Geisel School of Medicine, IDN region 1

Cathleen Morrow, MD, Geisel Medical School

Kristine Stoddard, Bi-State Primary Care

Ann Turner, Integrated Healthcare, CMC

Meeting Discussion:

2:00 - 2:15 **Welcome and Introductions/Read EM #12 Checklist and Take Roll Call** – Mary Bidgood-Wilson, ARNP – Chair

2:15 – 2:45 **Safety-Net Primary Care Provider Update** - Kristine E. Stoddard, NH Director of Public Policy, Bi-State Primary Care Association

2:45 - 3:20 **Cheshire Residency Update** – Cathy Morrow, MD, Chair of Community and Family Medicine, Geisel Medical School

3:20 – 3:55 **Area Health Education Center (AHEC) Update** – Kristina Fjeld-Sparks, Director, NH AHEC, Paula Smith, Director Southern NH AHEC, April Mottram, Director, Northern NH AHEC

Refer to the attached presentation “NH AHEC Update.”

3:55 - 4:00 **Updates & Adjourn**

Thursday November 19, 2:00-4:00pm

New Hampshire Area Health Education Center Network

Legislative Commission on Interdisciplinary Primary Care
Workforce Meeting
Thursday, October 22, 2020

Paula Smith, EdD, MBA
Director, Southern NH AHEC

Lamprey Health Care
Raymond, NH

April Mottram, RPh
Director of Programs/ NNH AHEC

North Country Health Consortium
Director, Northern NH AHEC
Littleton, NH

Kristina Fjeld-Sparks, MPH
Director, NH AHEC

The Dartmouth Institute for Health Policy & Clinical
Practice
Lebanon, NH

Katherine Semple Barta, JD
Deputy Director, NH AHEC



Agenda

- Overview of the AHEC program
- NH AHEC Health Service Scholars
- Northern NH AHEC activities
- Southern NH AHEC activities
- NP Fellowship Updates
- Clinical Placements Project
- Questions?

Area Health Education Centers

- Congress passed legislation in 1971 to establish AHECs with a focus on: recruit, train and retain a health professions workforce committed to rural and underserved populations
- Academic/Community Partnership
- Relationships across the country through National AHEC Organization.



AHEC PROGRAM

*With limited funding from Health Resources
Services Administration (HRSA),
Bureau of Health Workforce*

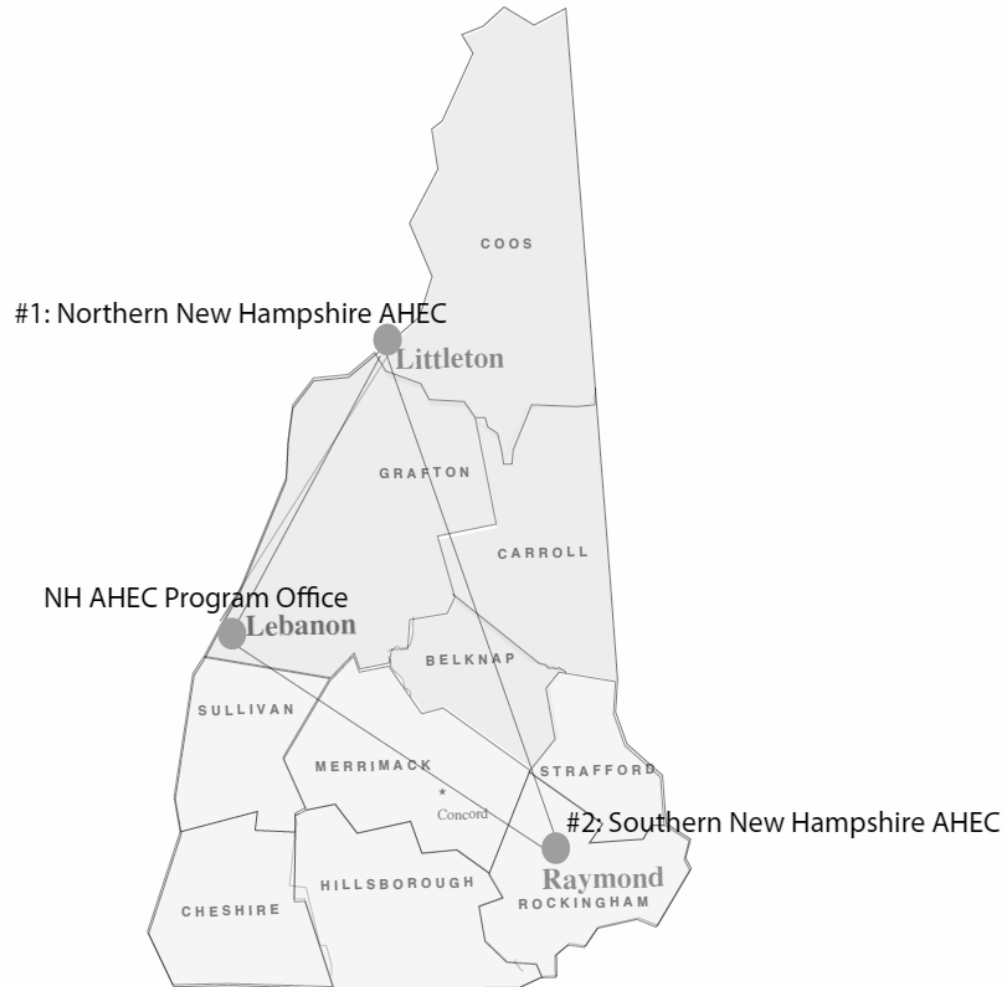
AHECs support:

- Education
- Clinical Care
- Workforce Development
- Community Health/Population Health

NH AHEC Mission

To develop innovative approaches that meet the health needs of diverse populations by enhancing the knowledge, skills, and capacity of the health care workforce and New Hampshire communities.


NH AHEC OFFICES





The
Dartmouth
Institute
for Health Policy
& Clinical Practice

The New Hampshire Area Health Education Center (AHEC)

Menu 



The
Dartmouth
Institute
for Health Policy
& Clinical Practice

Health Careers Institute at Dartmouth

Menu 



Experience a fun-filled, educational week exploring career pathways in health and healthcare:

New Hampshire AHEC Health Service Scholars



Core Topics

- Interprofessional Education
- Behavioral Health Integration
- Social Determinants of Health
- Cultural Competency
- Practice Transformation
- Substance Abuse Disorders
- COVID-19

Learn to identify and address **disparities in access to health care** in our country, and specifically in New Hampshire.

Katherine.J.Semple.Barta@Dartmouth.edu

2020–2021 Program Overview

Resource Library >

Archive

Independent Event Activity Log

1: Health Equity

2: Discriminatory Biases

3: Culture

4: Behavioral Health

5: Interprofessional Care

6: Substance Use Disorders

7: Telehealth

2020–2021 PROGRAM

2020–21 Trainings for NH AHEC Health Service

How to meet the **DIDACTIC ACTIVITY** hours requirement

1. COURSEWORK

2. ONLINE

sites.dartmouth.edu/ahecscholarsnh/

7.4 Adjusting to COVID-19: Conversation with Lamprey Health Care NP Fellows (video; 30 min)

This teleconference with Lamprey Health Care nurse practitioners focuses on the adjustments clinical staff have had to make to address the needs of patients and the community during the COVID-19 pandemic in southern New Hampshire.



A North Country Weekend Roadtrip for the Rural Health Scholars

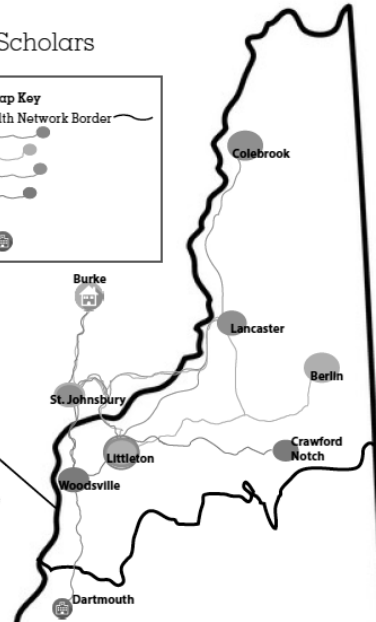
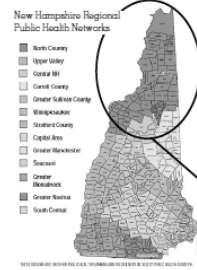
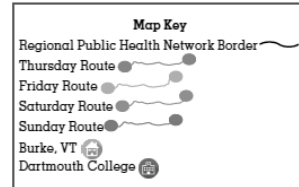
Focus Communities

THURSDAY:
 🚗 Leave from Dartmouth College
 Littleton, NH

FRIDAY:
 🚗 Leave from Burke, VT
 Littleton, NH
 Berlin, NH
 Return to St. Johnsbury, VT

SATURDAY:
 🚗 Leave from Burke, VT
 St. Johnsbury, VT
 Colebrook, NH
 Lancaster, NH
 Littleton, NH

SUNDAY:
 🚗 Leave from Burke, VT
 Woodsville, NH
 Crawford Notch, NH
 🚗 Return to Dartmouth College



A North Country Weekend Roadtrip for Rural Health Scholars



AGENDA

Day One THURSDAY:

Focus - North Country Collaboration

16:30 - North Country Health Consortium (A)
262 Cottage St Suite 230, Littleton, NH 03561
 (Northern Area Health Education Center, Public Health, Prevention),
 Orientation to the weekend & introduction to NCHC and it's programs.

18:30 - Schilling Beer Co. (B)
18 Mill St. Littleton, NH 03561
 Dinner with NCHC leadership and a local physician

Day Two FRIDAY:

Focus - Littleton Community

6:00 - RecFit
49 Perkins St, St Johnsbury, VT 05819
 Free spin class (optional)

8:30 - Hugh J. Gallen Career Center (C)
140 High St. Littleton, NH 03561
 Introduction to Allied Health Program, including discussion with staff and students about the region's health careers pipeline

9:30 - Integrated Healthcare Clinic (D)
29 Maple Street, Littleton, NH 03561
 A shared undertaking by Northern Human Services (NHS), the region's sole Community Mental Health Center, and Ammonoosuc Community Health Services (ACHS), one of three Federally Qualified Health Centers in the region. NHS houses the clinic ACHS furnishes Primary Care Providers so that clients receive integrated physical and behavioral health services in one location.

10:30 - North Country Home Health & Hospice Agency (E)

536 Cottage Street, Littleton, NH 03561
 Staff will discuss

- The critical role of home-based clinical care in rural communities
- The challenges of servicing a geographically large but sparsely populated rural area
- The impact of North Country culture on service uptake and hospice enrollment

11:30 - Littleton Regional Healthcare (F)

600 St Johnsbury Rd, Littleton, NH 03561
 Scholars will learn about

- Critical Access Hospitals
- LRH's Birthing Center - a service many CAHs can no longer support
- The importance of local access to specialty services and partnerships with tertiary care facilities

12:30 - Lunch and transition travel. Scholars will have 30 minutes to eat lunch at LRH before driving to Berlin (drive time - 60 minutes)

Focus - Berlin/Gorham Community

14:00 - Androscooggin Valley Hospital (G)
59 Page Hill Rd, Berlin, NH 03570
 AVH is one of three Critical Access Hospitals that, along with NCHHHA, comprise the North Country Healthcare affiliation. Visit will include:

- Discussion of the nature of and role played by NCH in sustaining rural agencies
- The interplay between rural hospitals and their local primary care providers
- AVH's role as one of the state's designated Doorway sites under the State Opioid Response (SOR) grant

15:30 - Depart for St. Johnsbury Alumni Dinner (H) (drive time - 90 minutes)



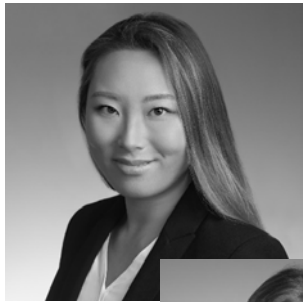
Northern New Hampshire AHEC



LIVE, LEARN
& Play
IN NORTHERN NEW HAMPSHIRE

Connecting professionals to communities

Lamprey Health Care NP Fellowship



Foster Transition to Practice, Increase Confidence and Competence of new Nurse Practitioners.

SNHAHEC Activities

- Chronic Disease and Chronic Pain Self Management
- Equity Leaders Fellowship
- Continuing Education
- CHW & Interpretation Training
- DEI & Trainers' Circle
- Seacoast Public Health Network



SNHAHEC Pipeline

SOUTHERN NH AHEC

The Science of Health Camp 2020

An exploration of the science behind health for rising freshmen, sophomores, juniors, and seniors

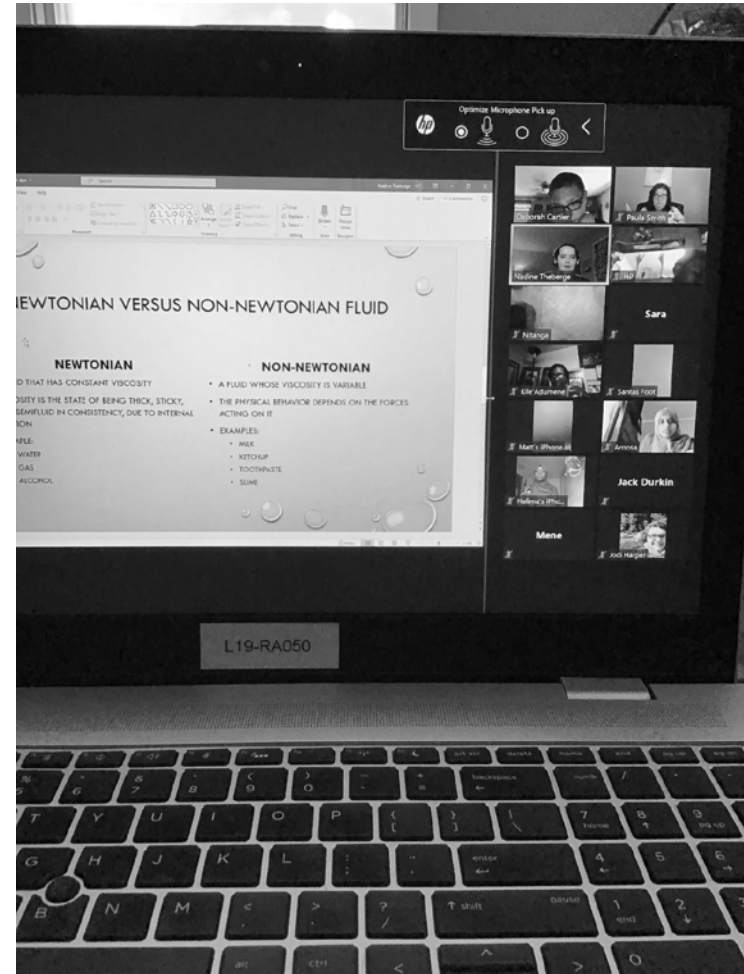
Tuesday and Thursday 1-3 pm
Via Zoom
July 14, 16, 21, 23, 28, 30

Join us for a summer filled with fun at home and online science experiments and activities!

For more information, please contact Nitanga Jean De Dieu at nitanga@snhahec.org or by calling 603-244-7360

SNHAHEC HEALTH CAREER EXPLORATION AHEC
Southern New Hampshire Area Health Education Center

Your participation may be able to earn you ELO school credit!



Clinical Placement Project

Background: Stakeholder group identified three priorities in relation to the Joint Underwriting Association (JUA) funding.

First priority: “Exploring what it will take to create a robust student placement/preceptor system in New Hampshire”

NH AHEC Network received a 1-year grant from the Endowment for Health to focus on this priority. Grant began June 1, 2020.

Clinical Placement Project

Overview: To assess more streamline placement system in New Hampshire focused on overcoming the following challenges:

- Clinical sites attempting to accommodate growing numbers of students.
- Academic institutions seeking to locate placement opportunities.
- Clinical sites fielding growing numbers of requests.

With a focus on building adequate healthcare workforce in New Hampshire.

Thank you!

- **April Mottram, RPh**

Director of Programs, North Country Health Consortium, Northern NH AHEC



- **Kristina Fjeld-Sparks, MPH**

Director, NH AHEC Program Office



- **Katherine Semple Barta, JD**

Deputy Director, NH AHEC Program Office

- **Paula Smith, MBA**

Director, Southern NH AHEC

