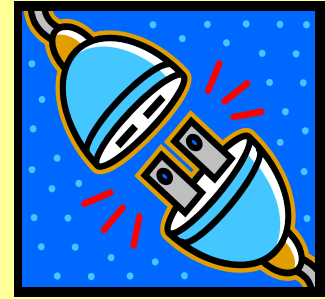


# CENTRAL DIRECTORY



Accurate and current information regarding:

1. **Public and private early intervention services, resources and experts available in the State of New Hampshire.**

This link will take you to the NH Family Centered Early Supports and Services page. Click on the Program Directory link and on page three you will find your town in those listed, which will indicate the region number. Scroll to the region and you will find the intake coordinator's contact information.

<https://www.dhhs.nh.gov/dcbcs/bds/earllysupport/index.htm>

2. **Professional and other groups that provide assistance to Infants and toddlers with disabilities eligible under Part C of the Act and their families**

**Autism Council** - was created in 2008 to provide coordinated leadership in addressing the healthcare, education or service needs of individuals who experience autism or a related disability. <http://www.nhcouncilonasd.org/>

**Autism Speaks** – provides families with resources and information, including online assistance locating services in your area.

<https://www.autismspeaks.org/resource-guide/results>

**Braille Tails** – Participating families receive 6 free print/Braille books per year, up to the child's 6<sup>th</sup> birthday. To be eligible, child must be 5 or under and child or parent must meet definition of blindness.

<https://www.aph.org/dolly-partons-imagination-library/apply/>

**Brain Injury Association on NH (BIANH)** - was founded in 1983 by parents of brain injured children and teens who came together to help one another and work to assure needed services and support were available to New Hampshire citizens with brain injury and their family members. Today, BIANH remains a grassroots organization led by a dedicated team of parents, caregivers, and professionals. <http://www.bianh.org/>

**Centers for Disease Control and Prevention** - Learn the Signs, Act Early, a comprehensive child development overview to help you follow your child's development and anticipate changes. <https://www.cdc.gov/ncbddd/actearly/milestones/index.html>

**Department of Education (NHDOE)** - <http://www.education.nh.gov/>  
Dept of Ed-how to find preschool coordinators by district  
[https://www.education.nh.gov/instruction/special\\_ed/preschool.htm](https://www.education.nh.gov/instruction/special_ed/preschool.htm)

**NH Association for Infant Mental Health (NHAIMH)** - supports the importance of the mental and emotional well-being of young children. It identifies and distributes information and advocates for public policies to promote positive child development. It also provides education about research and evidence-informed practices to strengthen collaborative efforts across agencies in support of families with infants and young children. <http://nhaimh.camp9.org/>

**NH Council on Developmental Disabilities (DDC)** - is a federally funded agency that supports public policies and initiatives that remove barriers and promote opportunities in all areas of life. <http://www.nhddc.org/>

**NH Family Voices (NHFV)** - NH Family Voices operates a "Family To Family Health and Education Center" with phone assistance, educational materials, a lending library and quarterly newsletter. NH Family Voices participates in several projects, each with a specific focus on a variety of ways we can help families to become informed, experienced, and self-sufficient advocates for their children and themselves. There is no charge for the services we provide. <http://nhfv.org>

**Disabilities Rights Center (DRC)** – provides information, referral, advice and legal representation and advocacy to individuals with disabilities on a wide range of disability related problems. <http://www.drenh.org/>

**Family Support NH** -Family Resource Centers of Quality provide communities: parenting support and education; opportunities that promote social interaction for children and youth, parents, and other caregivers; supports for children birth to age 5; provides information and referral; and promotion of family economic self-sufficiency, including facilitating access to concrete supports. <http://www.fsnh.org/>

**Future Insight**- provides vital services (TVIs, orientation mobility, and social worker) to school-aged children (ages 3-21) and contracts with some FCESS programs for infants and toddlers who are blind or visually impaired. <https://sightcenter.org/>

**Healthy Homes and Lead Poisoning Prevention Program**- a resource to address the risk of lead poisoning and other health, safety and energy issues that stem from the home environment including: Coordination and oversight of the Statewide Healthy Homes Strategic Action Plan, Facilitator of the "One-Touch" Healthy Homes initiative, Nurse case management for lead poisoned children, Environmental inspections for lead poisoned children, Licensing and certification of lead paint professionals, Statewide monitoring of all reported child and adult blood lead levels, Professional and public education; and Lead poisoning policy and rule development and enforcement. <https://www.dhhs.nh.gov/dphs/bchs/clpp/index.htm>

**InfantSEE** – is a public health program, managed by Optometry Cares - the American Optometric Association Foundation. Under this program, participating optometrists provide a comprehensive infant eye assessment between 6 and 12 months of age as a no-cost public service. <http://infantsee.org/>

**National Consortium on Deaf-Blindness (NCDB)** - is a national technical assistance (TA) and dissemination center for children and youth who are deaf-blind. It is funded by the U.S. Department of Education's Office of Special Education Programs (OSEP). <https://nationaldb.org/>

**Northeast Deaf and Hard of Hearing Services, Inc. (NDHHS)** – Since April 3rd, 2001, NDHHS has offered community education workshops and an array of services to Deaf and Hard of Hearing individuals and their families including an in-home sign language instruction for families of children ages birth – 21 who are Deaf or hard of hearing. <https://www.ndhhs.org/>

**Parent Information Center (PIC)**—supports families in the unique learning potential of their children, including those with a disability. Parents make the difference and all children can succeed with the right supports is a fundamental belief of PIC. <http://www.picnh.org>

**Partners in Health** - is a statewide community-based program that assists families of children from birth until age 21 with chronic health conditions expected to last 12 months or more. Support Coordinators work with families in obtaining appropriate community social supports and services and towards a more independent community and family life. <http://www.dhhs.nh.gov/dcbcs/bds/sms/pih/>

**SPARK NH** - Spark NH is New Hampshire's governor-appointed Early Childhood Advisory Council. It is a private-public partnership that works to create a comprehensive coordinated system of programs and supports for young children and their families. The website offers information for families, professionals and anyone who has an abiding interest in small children or all of us. <http://sparknh.org>

**Special Medical Services (SMS)** - provides support to programs and services for children, age birth to 21 years, who have, or are at risk for, a chronic medical condition, disability or special health care need. SMS care coordination services: child development, neuromotor and complex care clinics; nutritional and feeding/swallowing consultation; psychological and **physical therapy services**; and support for the NH Family Voices and Partners in Health programs. <http://www.dhhs.nh.gov/dcbcs/bds/sms/index.htm>

**University of New Hampshire Institute On Disability (UNH IOD)** -

*was established in 1987 to provide a university-based focus for the improvement of knowledge, policies, and practices related to the lives of persons with disabilities and their families. The IOD promotes full access, equal opportunities, and participation for all persons by strengthening communities and advancing policy and systems change, promising practices, education, and research. There are many opportunities on the website for training and participation. <http://iod.unh.edu/Home.aspx>*

**Watch Me Grow (WMG)** - *helps New Hampshire families to ensure their child's brightest future by tracking his or her growth and development. WMG provides information about health and development, screening questionnaires, tips to help children grow and learn, and connections to appropriate services. It is New Hampshire's developmental screening, referral and information system for families of children ages birth to six years.*

<http://watchmegrownh.org/index.php>

**2-1-1** - *is an easy to remember telephone number that connects callers, at no cost, to information about critical health and human services available in their community. 2-1-1 NH is an initiative led by the United Way of New Hampshire (UWNH), an organization that represents the 7 United Ways across the state, in partnership with Eversource and the State of New Hampshire. Residents in New Hampshire can contact 2-1-1 NH toll-free by dialing 2-1-1 in state or 1-866-444-4211 from out of state.*

<http://www.211nh.org/>

3. **Research and Demonstration projects being conducted in the State and elsewhere relating to infants and toddlers with disabilities.**

**The Promotion of Early Childhood Coalition (PECC)** - *PECC is an interdisciplinary working group that brings together faculty across the University of New Hampshire community with a vested interest in the promotion of early cognitive, social, and emotional development to ensure the success of New Hampshire's children in school and in life. PECC intends to create a comprehensive community-based research and outreach agenda that can be leveraged to promote sustained achievement and social well-being. The Preschool Development Grant is a project of PECC.*

<https://mypages.unh.edu/pecc/home>

<https://mypages.unh.edu/pecc/pdg>

**Technical Assistance and Dissemination Center** - grants and contracts OSEP (the Office of Special Education Programs) has funded as part of its initiatives to improve results for children with disabilities, click the link below. You may scroll to find NH or another state and disability. You may also look for demonstration projects/research and models throughout the country.

<http://publicddb.tadnet.org/https://www2.ed.gov/programs/oseptad/awards.html>