

**State of New Hampshire**  
**Department of Health and Human Services**

---

**Division of Economic & Housing Stability**  
**COVID-19 Data**

*February 8, 2021*

# HIGHLIGHTS – FEBRUARY 8, 2021

2

Helping individuals and families through the pandemic...

- Through the work of the Child Care Recovery and Stabilization Program, there are over 45,644 child care spaces with 769 programs statewide.
- The Emergency Allotment for ongoing SNAP Households provides an increased benefit, bringing families to the maximum benefit for their family size. Monthly, an average of approximately 23,819 households receive this benefit.
- The Housing Stability Fund assisted 4,788 households impacted by the pandemic maintain their housing.



## **Mission**

To advance the health, economic, and social well-being of individuals, families, and communities.

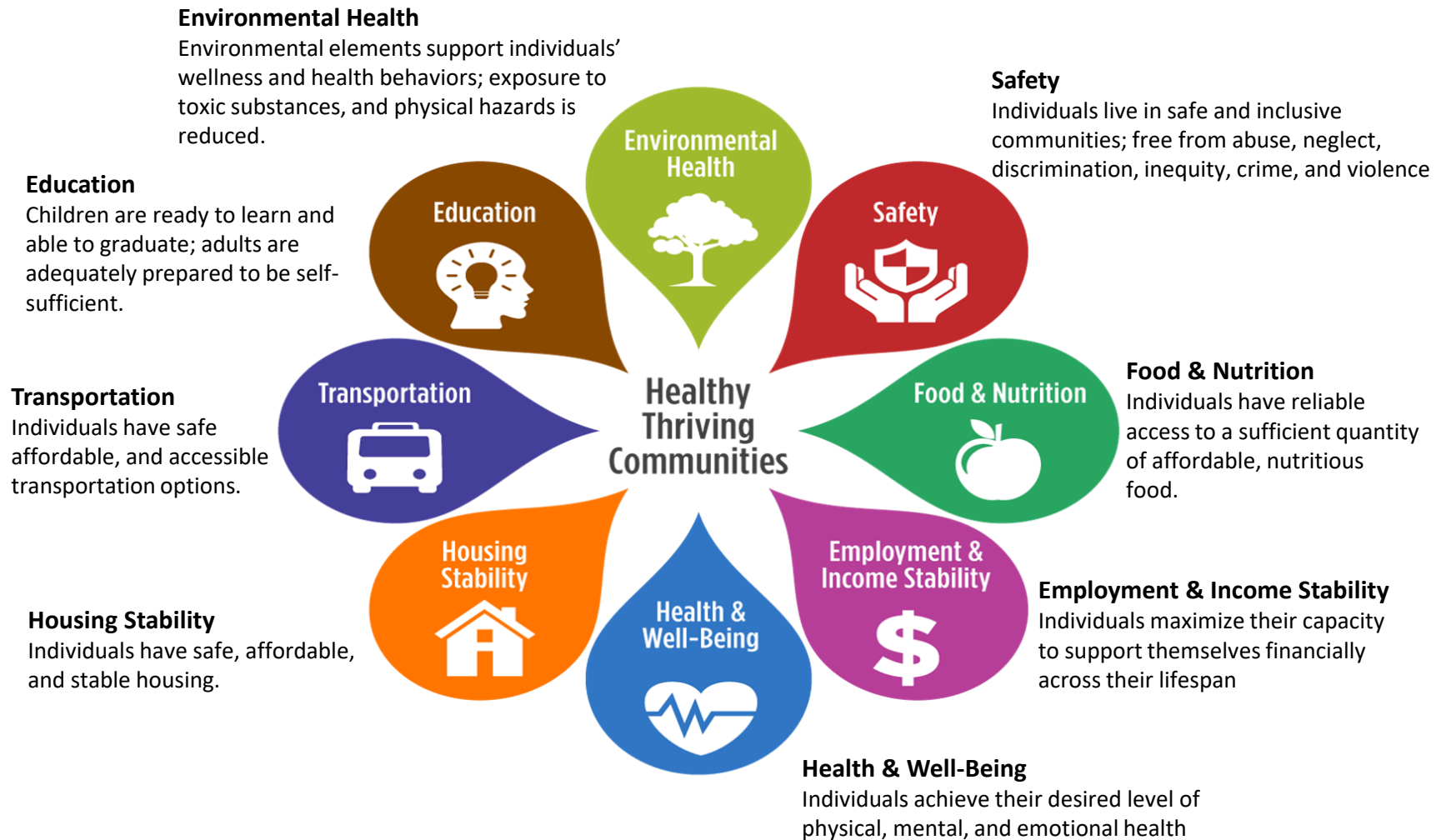
## **Vision**

Individuals and families are strong, resilient, and thriving in their communities.



# SOCIAL DETERMINANTS OF HEALTH

4



# DIVISION OF ECONOMIC & HOUSING STABILITY (DEHS)

5

DEHS includes the following:

- Bureau of Child Development & Head Start Collaboration
- Bureau of Child Support Services
- Bureau of Employment Supports
- Bureau of Family Assistance
- Bureau of Housing Supports
- Comprehensive Family Support Services

*Additional data will be added to this document as it becomes available.*



# UNDUPLICATED OPEN CASES – ECONOMIC ASSISTANCE

6

| Caseload                             | Week Ending          |         |         |         |         |         |         |         |         |         |         |         |         |         |
|--------------------------------------|----------------------|---------|---------|---------|---------|---------|---------|---------|---------|---------|---------|---------|---------|---------|
|                                      | 31-Jan<br>(Baseline) | 28-Feb  | 27-Mar  | 24-Apr  | 29-May  | 26-Jun  | 31-Jul  | 28-Aug  | 25-Sep  | 30-Oct  | 27-Nov  | 25-Dec  | 29-Jan  | 05-Feb  |
| <b>Open Cases<br/>(Unduplicated)</b> | 119,424              | 119,306 | 118,656 | 122,739 | 125,256 | 126,203 | 127,731 | 128,902 | 130,414 | 132,115 | 134,413 | 137,113 | 138,311 | 138,488 |
| Adult Cash                           | 7,413                | 7,404   | 7,360   | 7,438   | 7,485   | 7,464   | 7,393   | 7,298   | 7,116   | 6,996   | 6,893   | 6,807   | 6,553   | 6,458   |
| FANF Cash                            | 3,673                | 3,627   | 3,621   | 3,783   | 3,808   | 3,746   | 3,798   | 3,611   | 3,542   | 3,412   | 3,335   | 3,275   | 3,173   | 3,077   |
| Medicaid                             | 107,359              | 107,240 | 107,174 | 110,728 | 113,363 | 114,406 | 116,098 | 117,240 | 118,768 | 120,508 | 122,800 | 125,583 | 126,877 | 127,039 |
| SNAP                                 | 38,347               | 38,228  | 37,935  | 40,101  | 40,638  | 38,391  | 37,612  | 37,062  | 36,687  | 37,012  | 36,722  | 36,480  | 36,063  | 33,467  |
| Child Care                           | 3,236                | 3,227   | 3,215   | 3,225   | 3,235   | 3,259   | 3,300   | 3,299   | 3,147   | 3,001   | 2,826   | 2,766   | 2,489   | 2,311   |
| QMB/SLMB/QDWI                        | 22,920               | 22,897  | 22,845  | 22,869  | 23,342  | 23,426  | 23,484  | 23,533  | 23,599  | 23,740  | 23,738  | 23,782  | 24,054  | 24,089  |

**\*Case equals household, not individual people. For example, one case could be a parent and two children or a single person. Data from other sources may reference individuals, not households, which will cause numbers to be reported differently.**

**\*These numbers are a point in time on the day the report is run; to get a true reflection, one should look at month to month changes.**

**FANF Cash** – provides financial assistance to eligible families with dependent children

**QMB** – Qualified Medicare Beneficiary Assistance

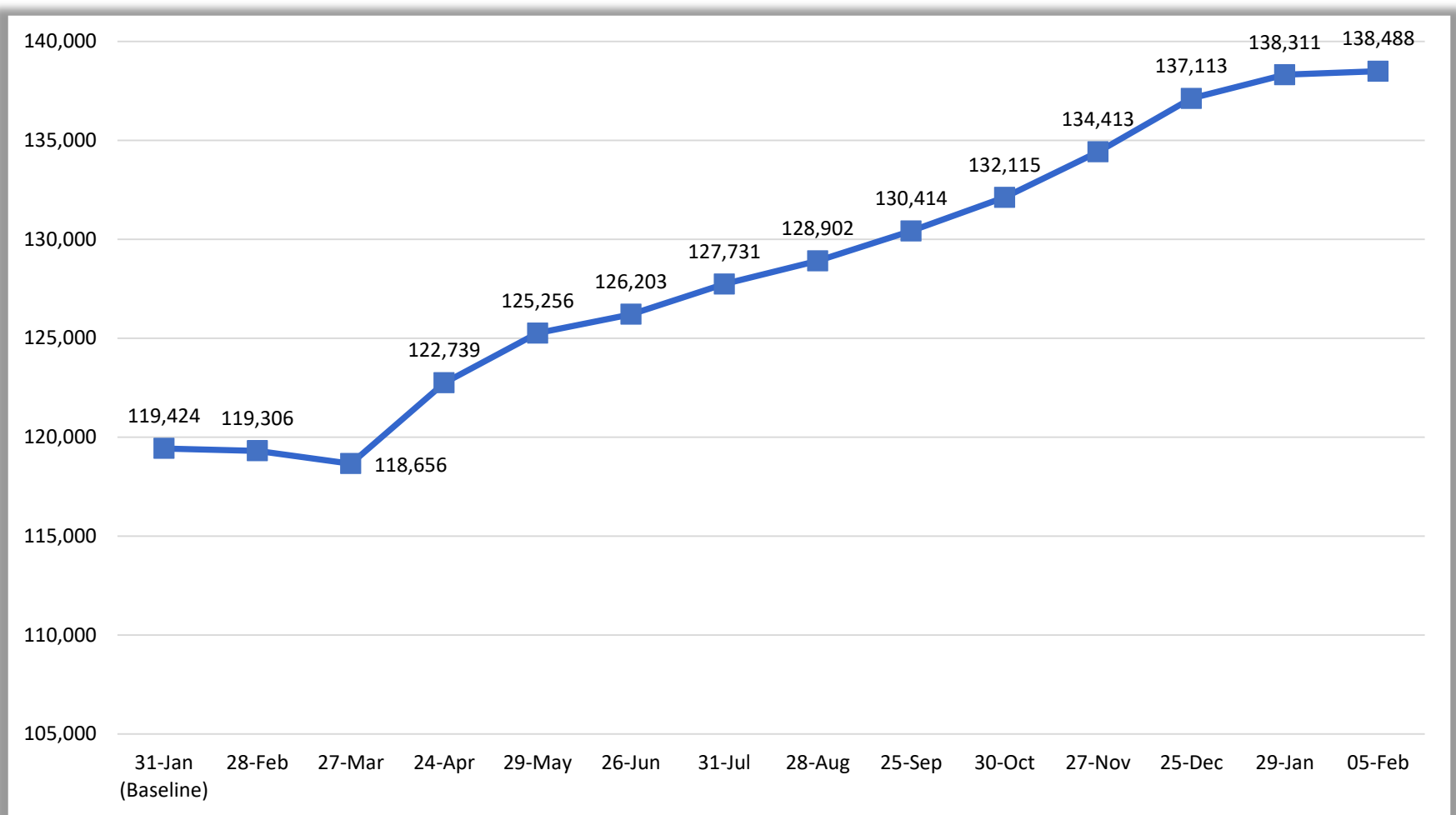
**SLMB** – Specified Low-Income Medicare Beneficiary

**QDWI** – Qualified Disabled & Working Individuals

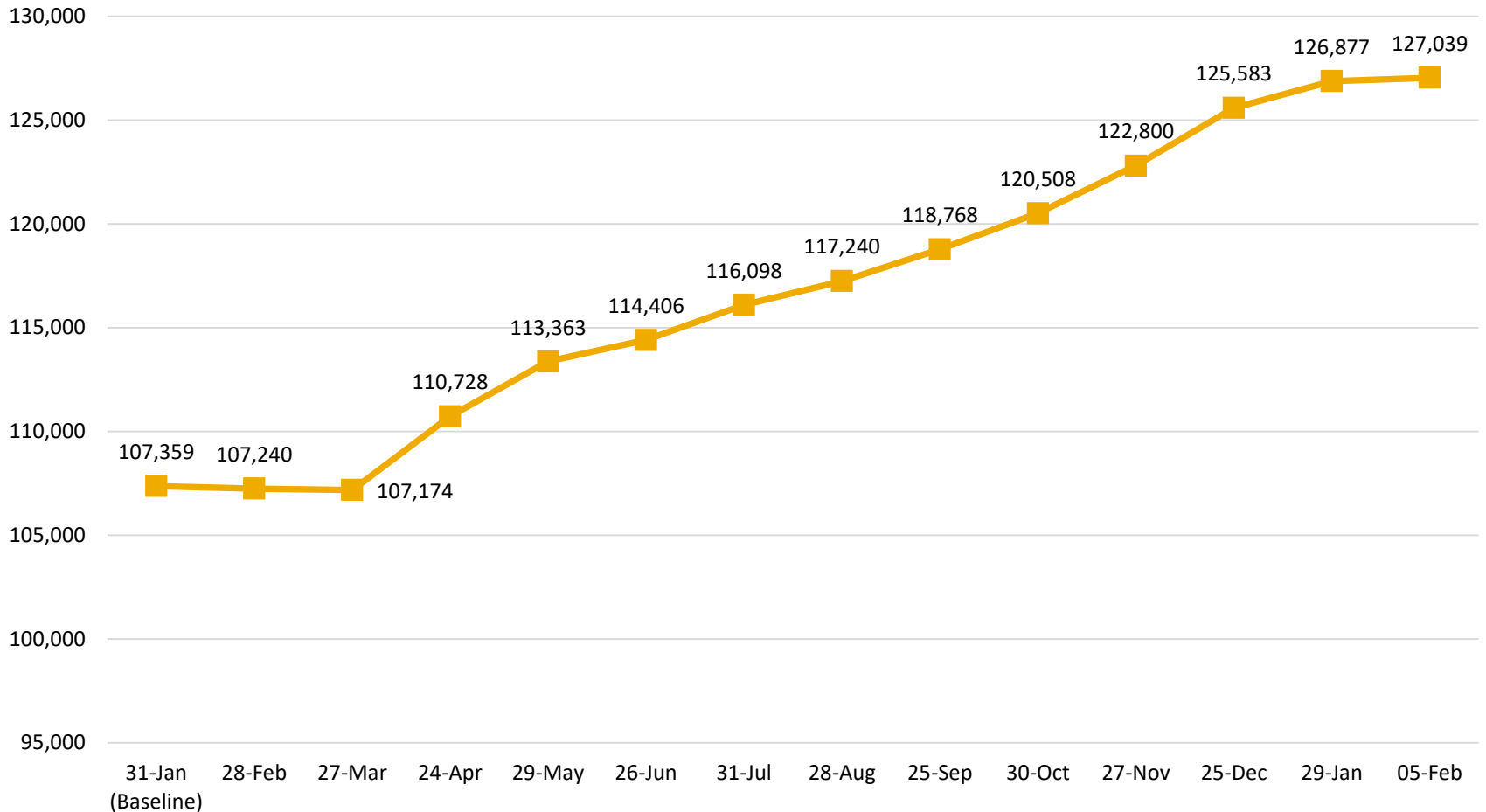


# UNDUPLICATED OPEN CASES – ECONOMIC ASSISTANCE

7

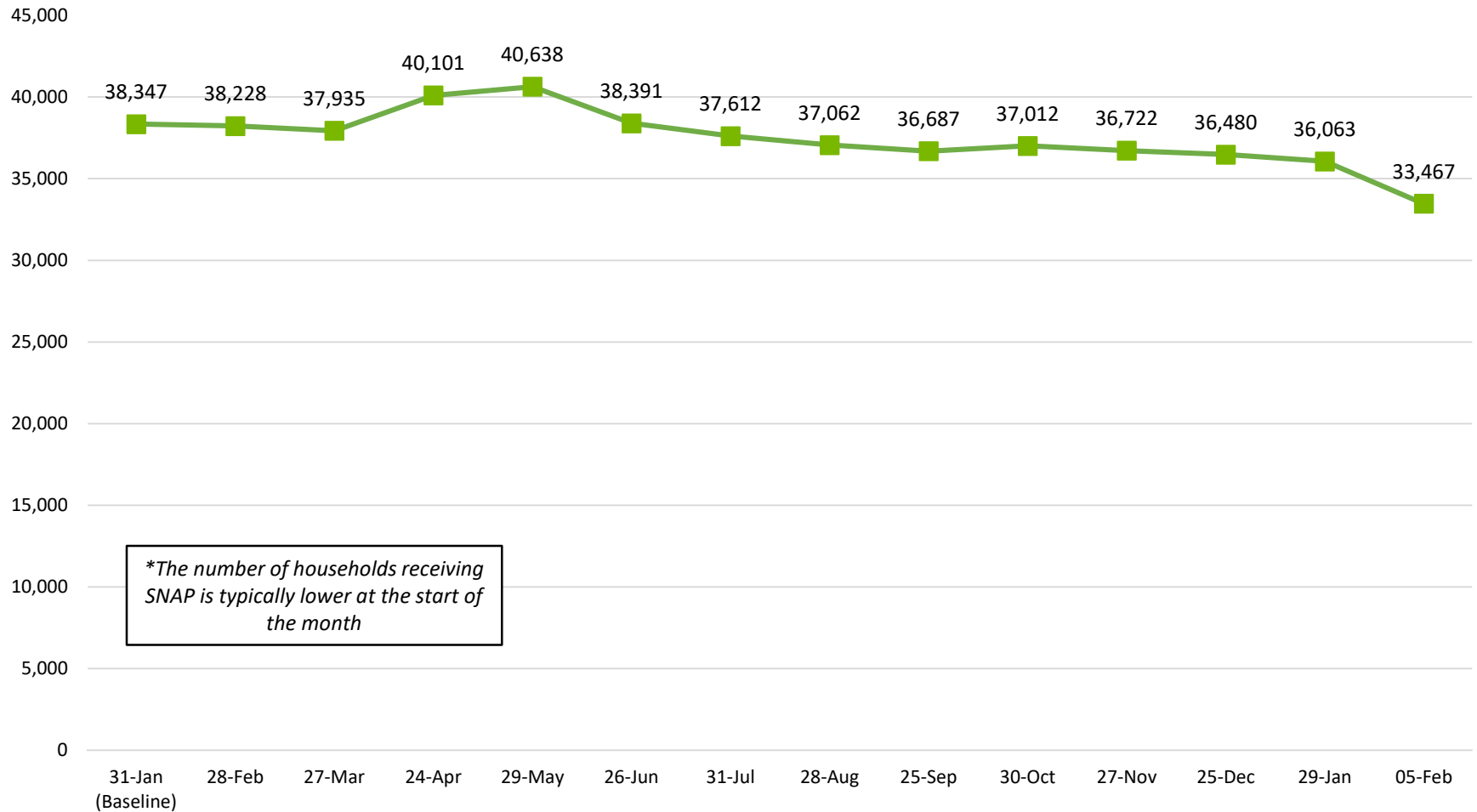


# MEDICAID CASELOAD NUMBERS





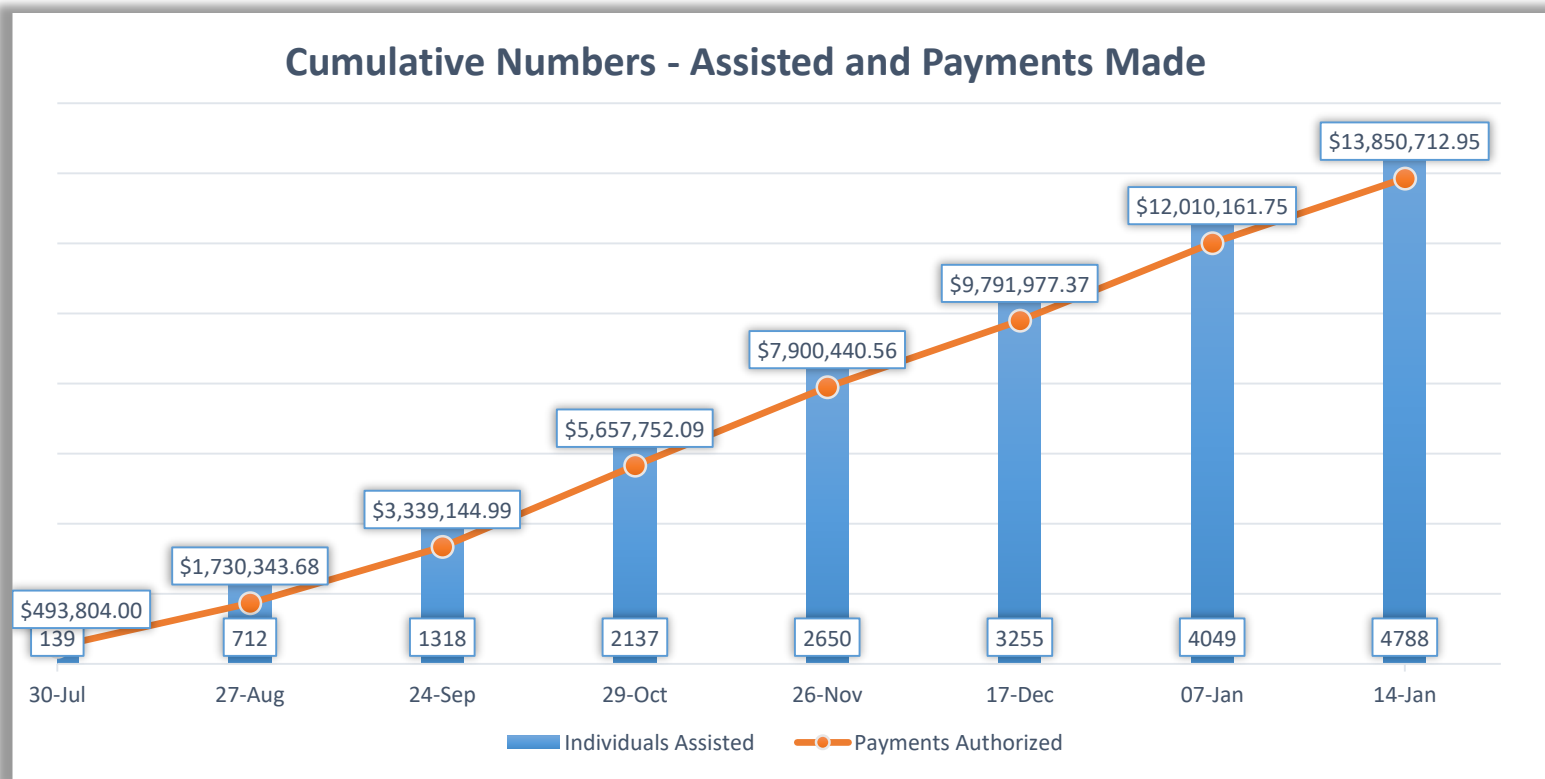
# SNAP CASELOAD NUMBERS



# NH Housing Relief Program

The NH Housing Relief Program was created to support families or individuals in need of housing assistance as a result of COVID-19.

Access to the program is through the five (5) Community Action Program agencies located throughout the state.



# INVESTMENT IN CHILD CARE DURING COVID-19

11

To date, \$45.7M has been invested in the child care field. This enables 768 programs to offer 45,788 licensed or allowable capacity spaces across the state.

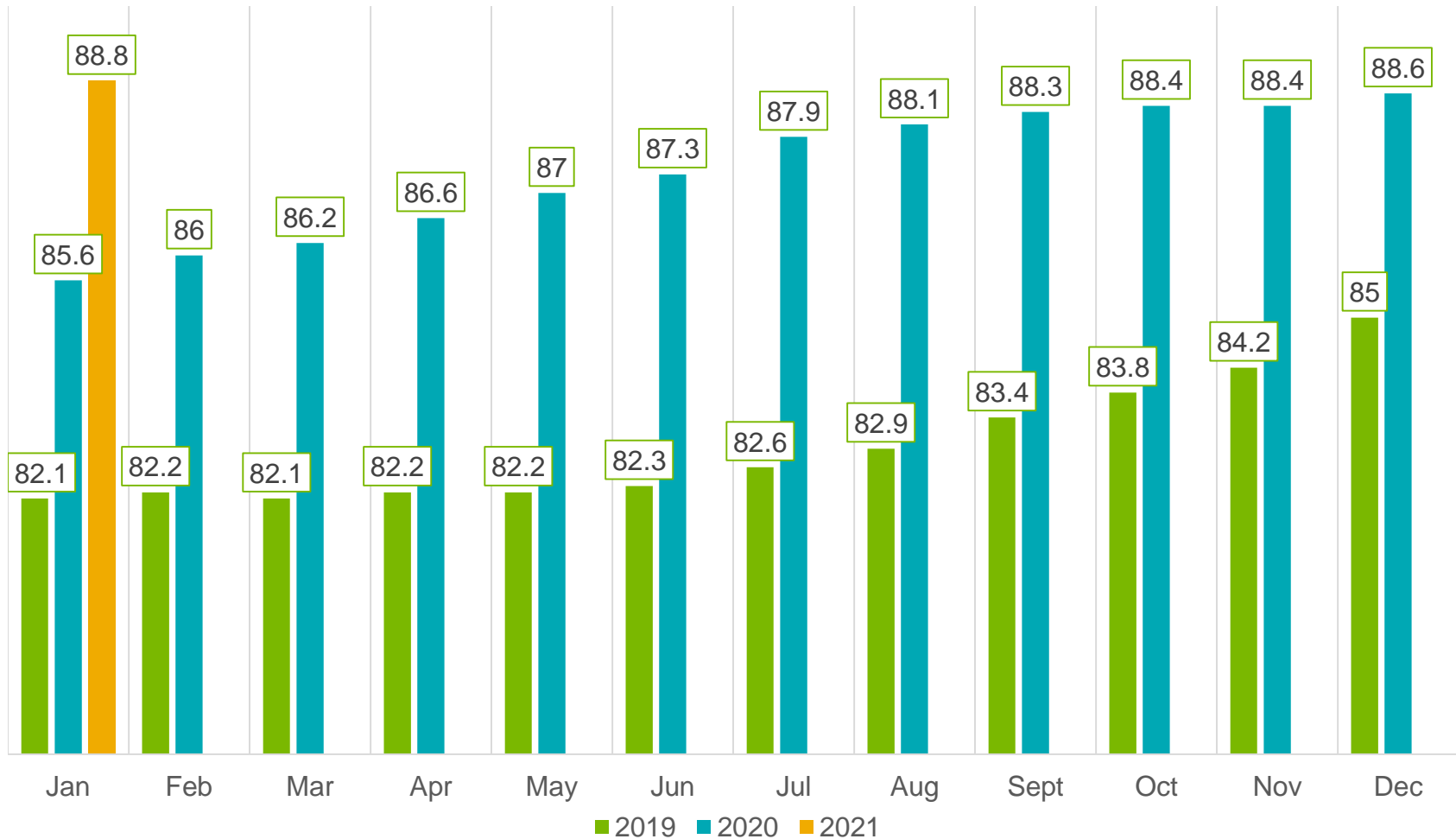
- Full Time School Age Children Cost Share and Infant/Toddler Disaster Days & Cost Share: \$9.6M
- Emergency Child Care Program: \$3M
- Child Care Recovery and Stabilization Program: \$19.6M
- Health and Safety Supplies: \$1M
- Infrastructure & Capacity Building: \$1.83M
- Child Care Recovery and Stabilizations Supplemental: \$10M
- Absentee billing related to COVID for all children with enrolled providers, August 3, 2020 through February 8, 2021: \$550,000 paid (\$693,000 in invoices as of 12/27/2020 reported in January 2021 presentation)
- Extension of full-time rate for school-age care for hours children would have been in school but for COVID-19, September 7 through February 8, 2021: \$113,780 paid



# BUREAU OF CHILD SUPPORT SERVICES – SUPPORT ORDERS

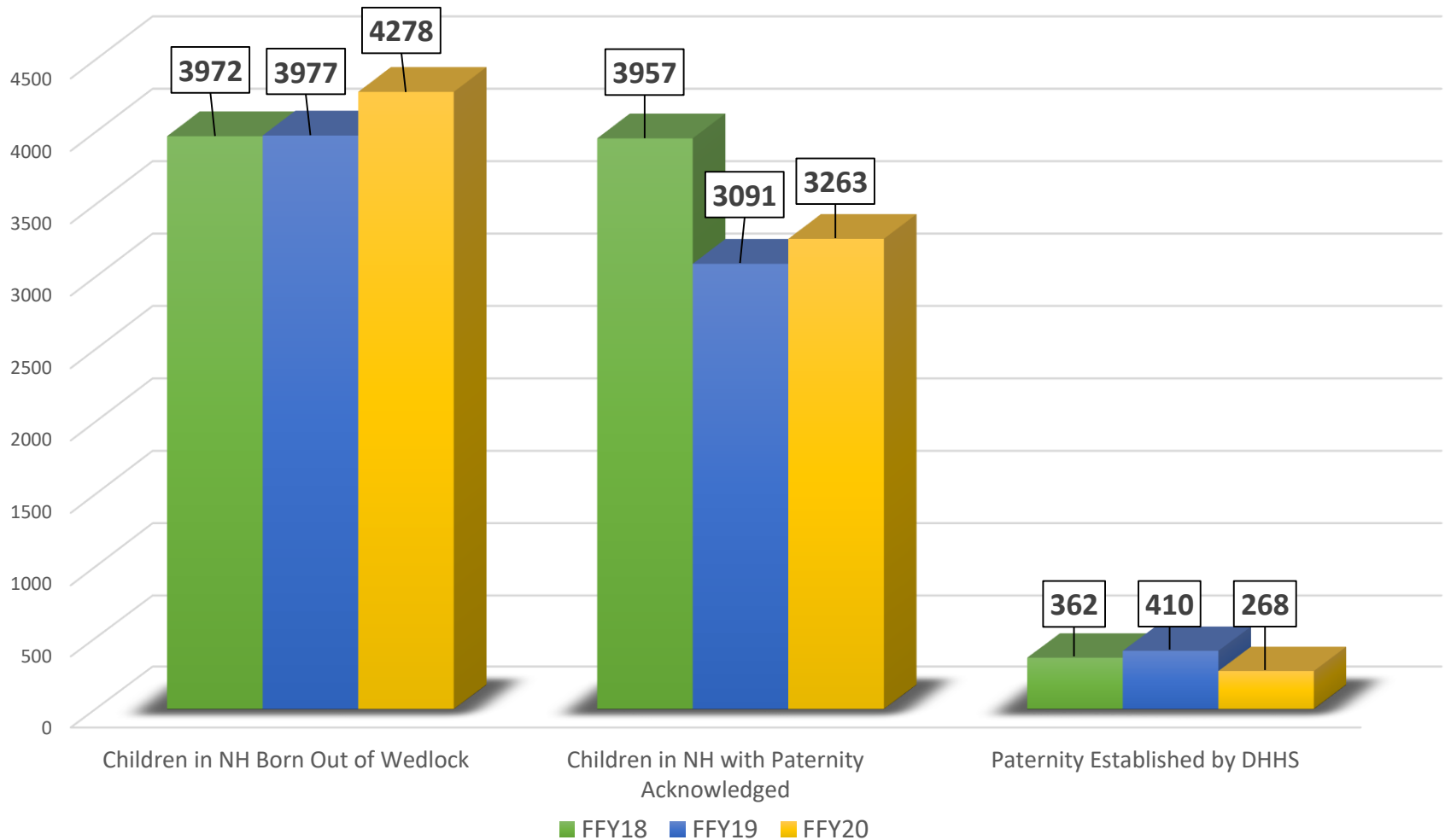
12

## Percentage of Orders Established in Total Caseload 2019 – 2021



# BUREAU OF CHILD SUPPORT SERVICES – PATERNITY

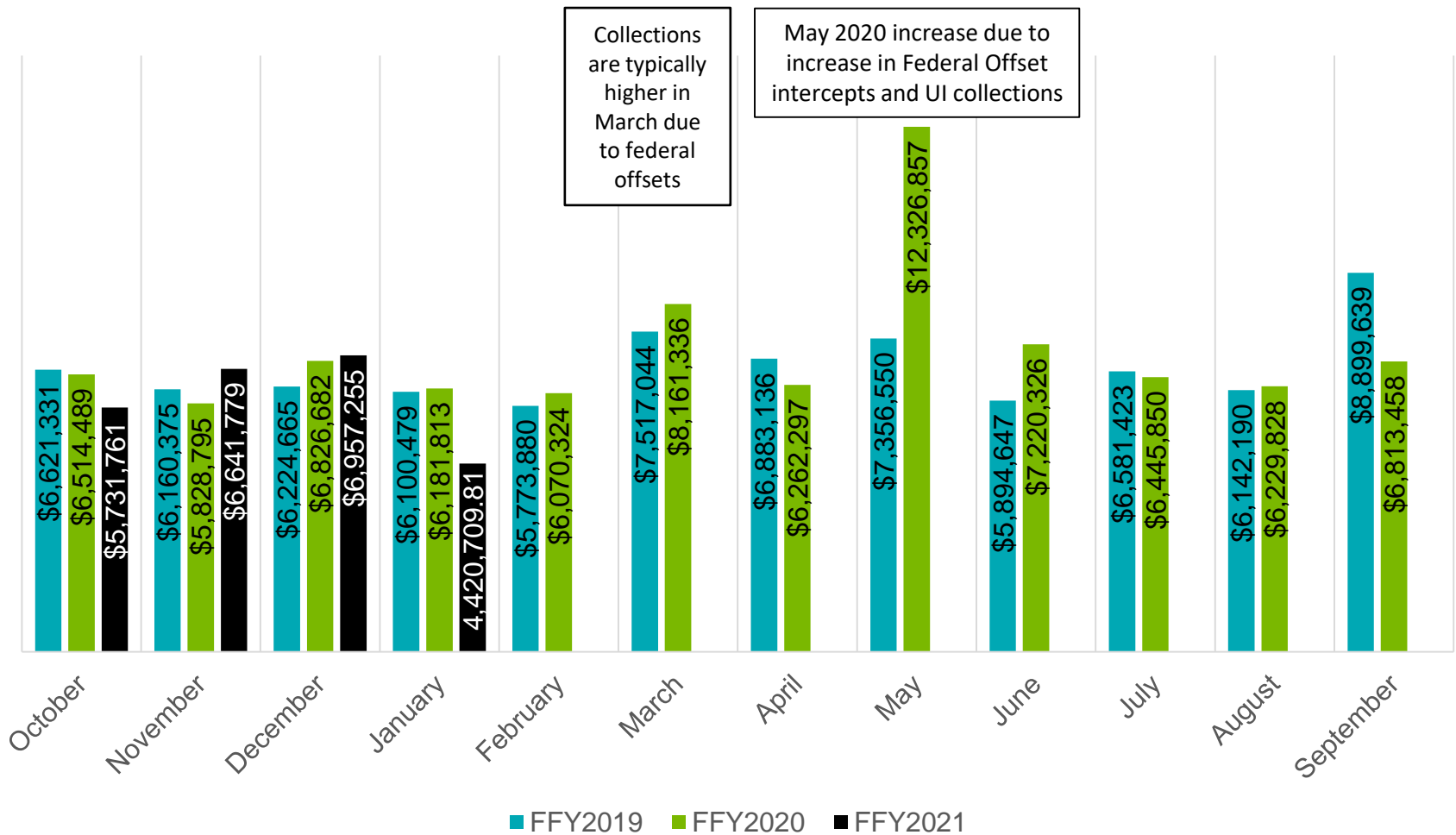
13



# BUREAU OF CHILD SUPPORT SERVICES – TOTAL COLLECTIONS

14

## Total Collections from All Sources by Month – Federal Fiscal Year 2019-2021





## Please contact:

- Marti Ilg, Deputy Director, DEHS  
[Marti.Ilg@dhhs.nh.gov](mailto:Marti.Ilg@dhhs.nh.gov)  
271- 9654
- Chris Santaniello, Director, DEHS  
[Christine.Santaniello@dhhs.nh.gov](mailto:Christine.Santaniello@dhhs.nh.gov)  
271-2023