

**State of New Hampshire
Department of Health and Human Services**

**Division of Economic & Housing Stability
COVID-19 Data**

June 22, 2020

Division of Economic & Housing Stability (DEHS)

Mission

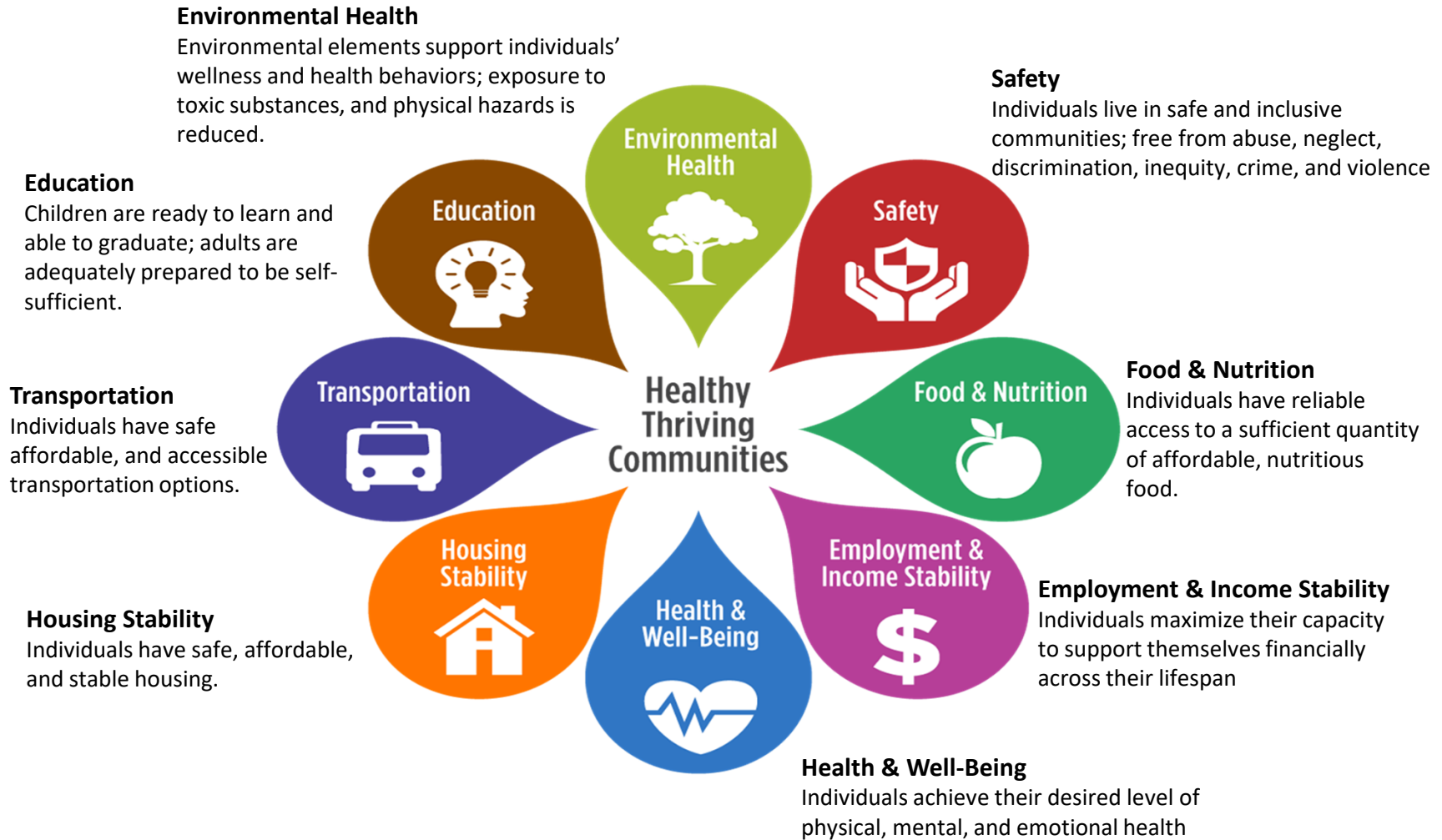
To advance the health, economic, and social well-being of individuals, families, and communities.

Vision

Individuals and families are strong, resilient, and thriving in their communities.



Social Determinants of Health



Division of Economic and Housing Stability (DEHS)

4

DEHS includes the following:

- Bureau of Child Development & Head Start Collaboration
- Bureau of Child Support Services
- Bureau of Employment Supports
- Bureau of Family Assistance
- Bureau of Housing Supports
- Comprehensive Family Support Services

Additional data will be added to this document as it becomes available.



Economic Assistance Caseload Numbers

Caseload	WeekEnding															
	31-Jan (Baseline)	28-Feb	20-Mar	27-Mar	3-Apr	10-Apr	17-Apr	24-Apr	4-May	8-May	15-May	22-May	29-May	5-Jun	12-Jun	19-Jun
OpenCases(Unduplicated)	119,424	119,306	119,635	118,656	119,501	120,654	121,544	122,739	123,783	124,138	124,624	125,023	125,256	125,495	125,628	125,840
Adult Cash	7,413	7,404	7,347	7,360	7,345	7,379	7,406	7,438	7,430	7,453	7,483	7,462	7,485	7,458	7,480	7,445
FANF Cash	3,673	3,627	3,602	3,621	3,626	3,680	3,720	3,783	3,803	3,821	3,854	3,792	3,808	3,768	3,793	3,729
Medicaid	107,359	107,240	107,240	107,174	107,198	108,386	109,367	110,728	111,737	112,174	112,648	113,084	113,363	113,706	113,861	114,060
SNAP	38,347	38,228	37,679	37,935	36,909	38,138	39,303	40,101	39,255	39,718	40,104	40,443	40,638	37,540	37,873	38,130
Child Care	3,236	3,227	3,231	3,215	3,215	3,213	3,225	3,225	3,225	3,230	3,232	3,238	3,235	3,229	3,238	3,246
QMB/SLMB/QDWI	22,920	22,897	22,824	22,845	22,587	22,695	22,779	22,869	23,171	23,216	23,293	23,329	23,342	23,309	23,346	23,392

****Case equals household, not individual people. For example, one case could be a parent and two children or a single person. Data from other sources may reference individuals, not households, which will cause numbers to be reported differently.***

FANF Cash – provides financial assistance to eligible families with dependent children

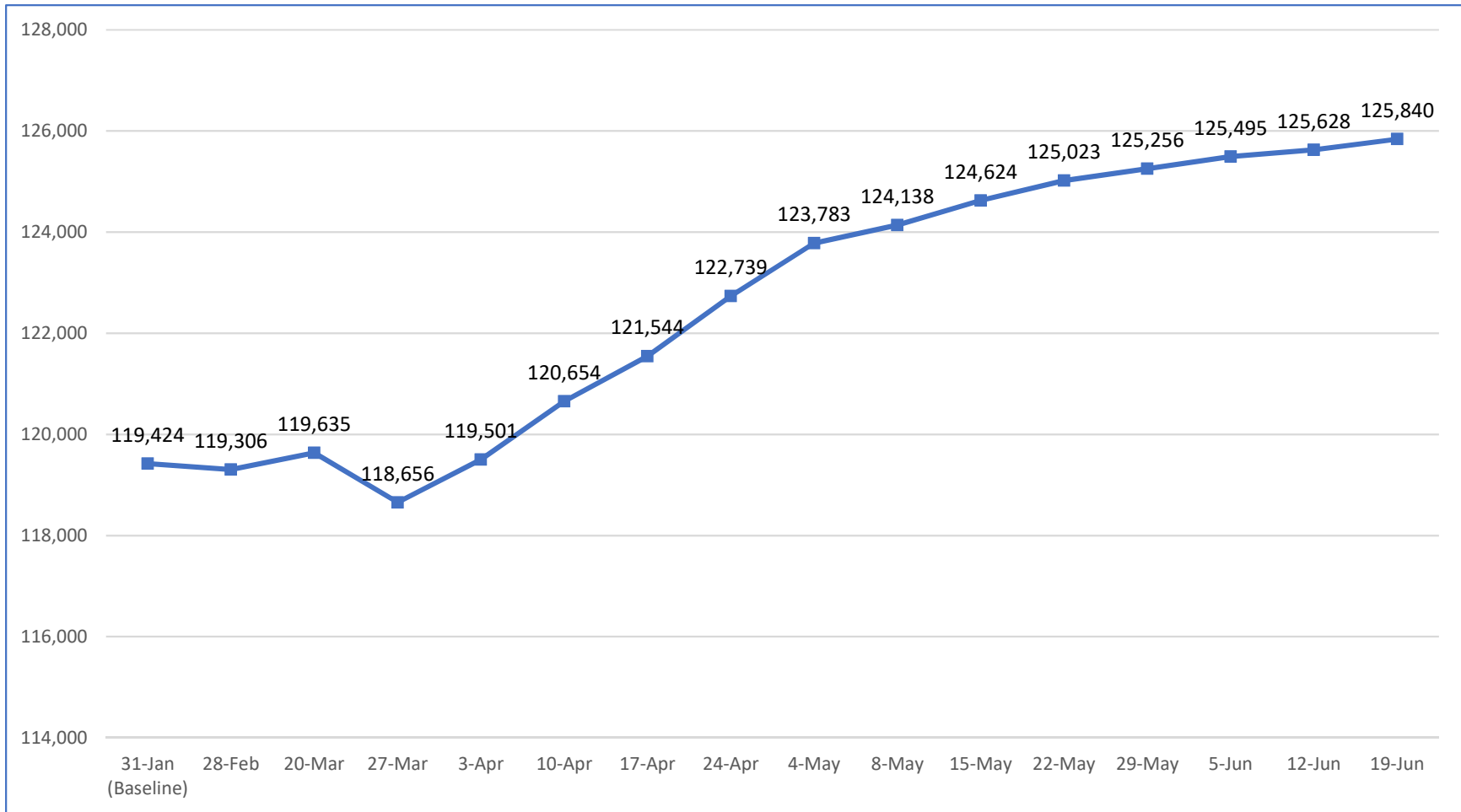
QMB – Qualified Medicare Beneficiary Assistance

SLMB – Specified Low-Income Medicare Beneficiary

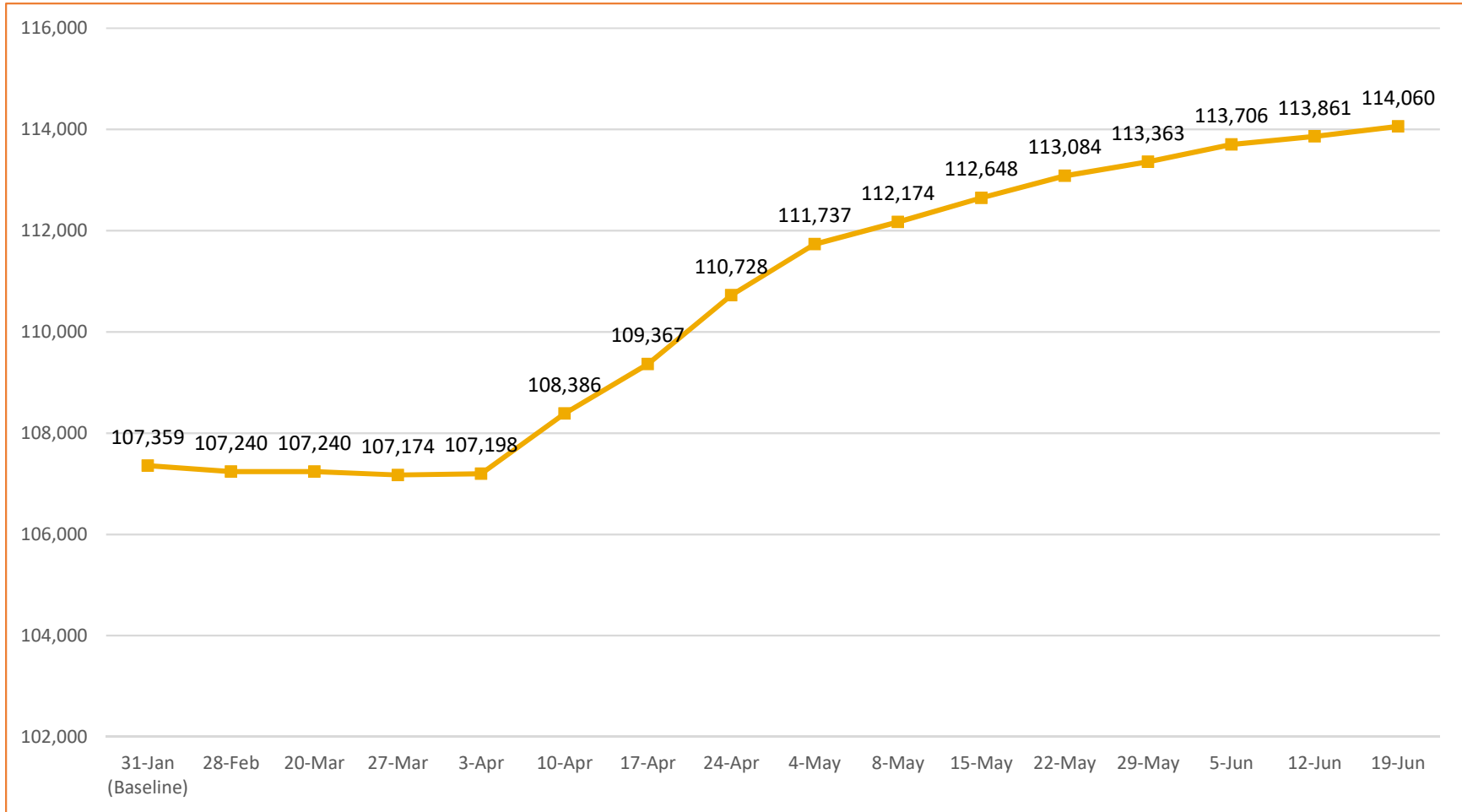
QDWI – Qualified Disabled & Working Individuals



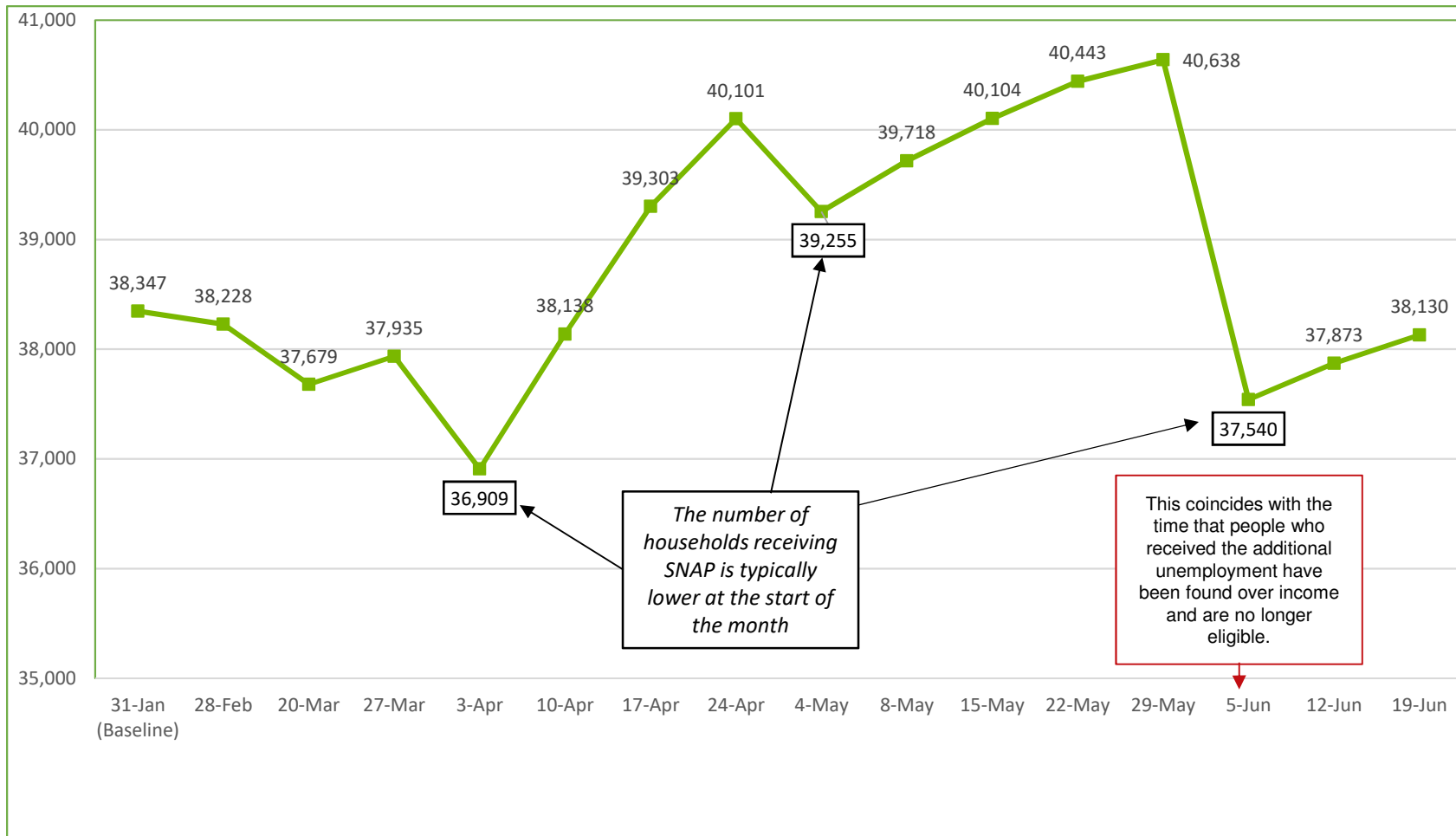
Unduplicated Open Cases - Economic Assistance



Medicaid Caseload Numbers

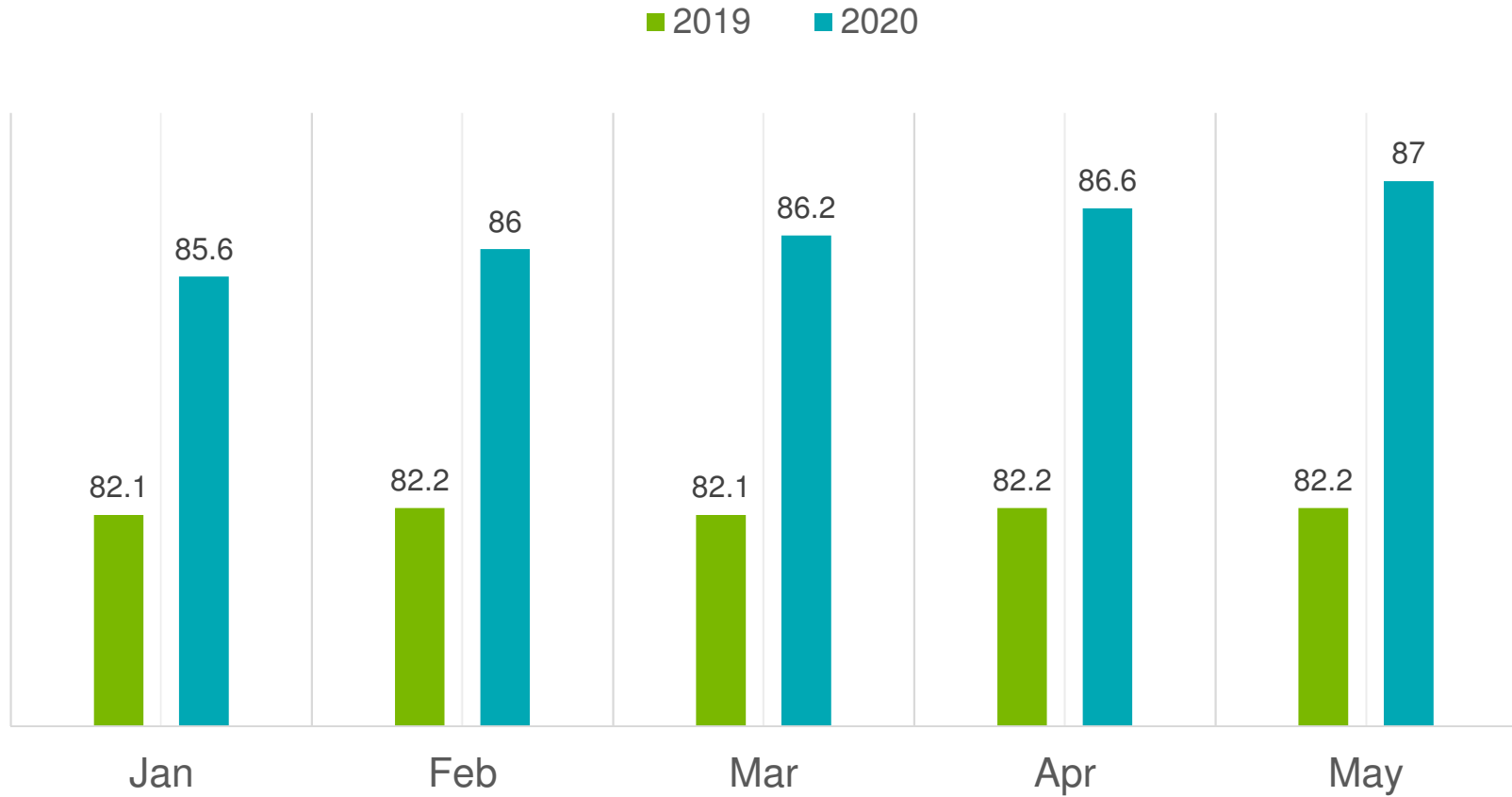


SNAP Caseload Numbers



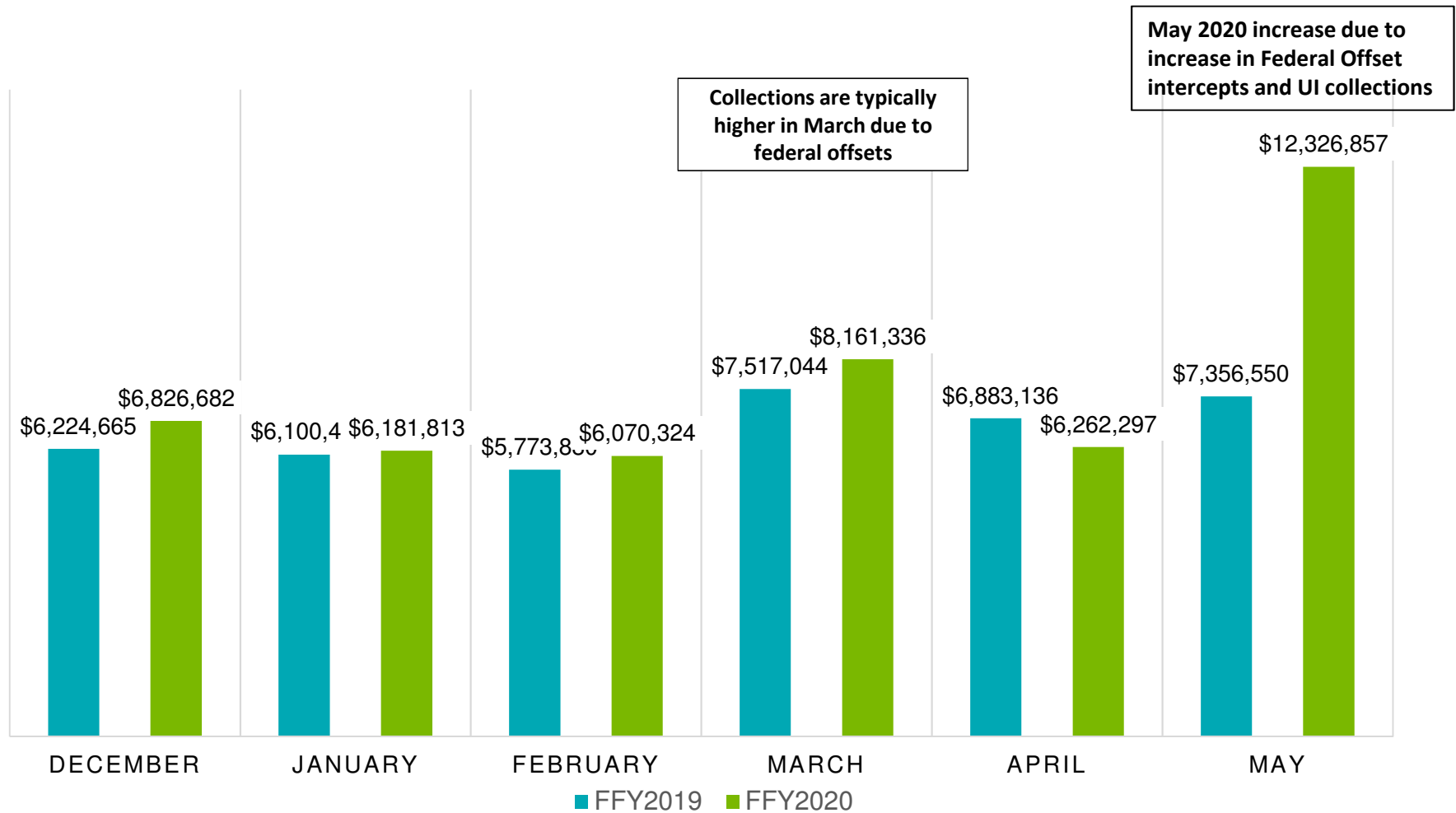
Bureau of Child Support Services – Support Orders

PERCENTAGE OF ORDERS ESTABLISHED IN TOTAL CASELOAD – Y2Y



Bureau of Child Support Services – Total Collections

Total Collections from All Sources by Month – Federal Fiscal Year 2019-2020





Please contact:

- Marti Ilg, Deputy Director, DEHS
Marti.Ilg@dhhs.nh.gov
271- 9654
- Chris Santaniello, Director, DEHS
Christine.Santaniello@dhhs.nh.gov
271-2023
- For data specific to child care, please visit
Child Care Aware of New Hampshire at:
<http://nh.childcareaware.org/>

