

**State of New Hampshire**  
**Department of Health and Human Services**

---

**Division of Economic & Housing Stability**  
**COVID-19 Data**

*January 25, 2021*

# HIGHLIGHTS – JANUARY 25, 2021

2

Helping individuals and families through the pandemic...

- Through the work of the Child Care Recovery and Stabilization Program, there are over 45,644 child care spaces with 769 programs statewide.
- The Emergency Allotment for ongoing SNAP Households provides an increased benefit, bringing families to the maximum benefit for their family size. Monthly, an average of approximately 23,839 households receive this benefit.
- To date, statewide, 4,611 individuals have been assisted with funding from the Housing Stability Program to maintain their housing.



# DIVISION OF ECONOMIC & HOUSING STABILITY (DEHS)

3

## **Mission**

To advance the health, economic, and social well-being of individuals, families, and communities.

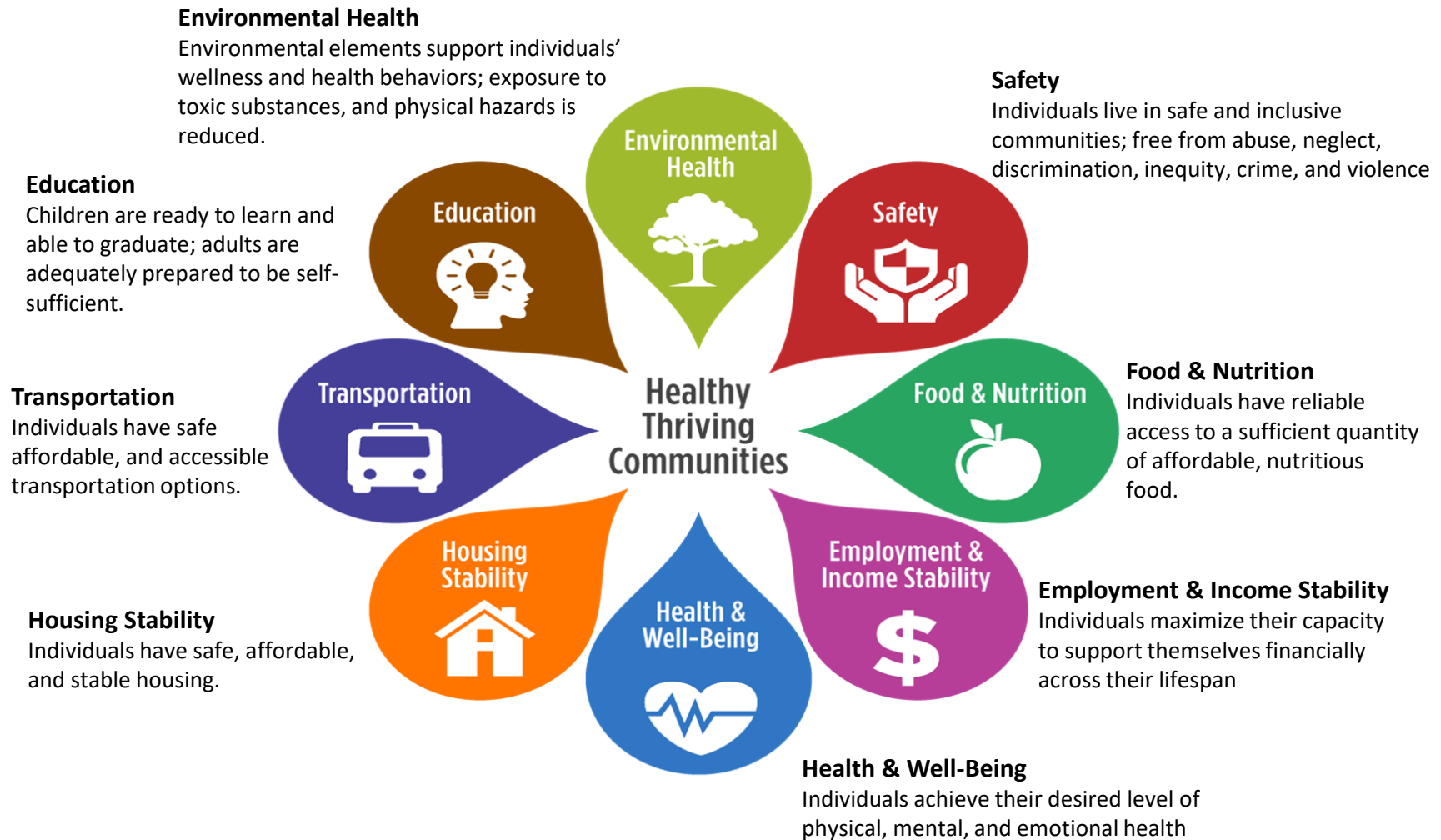
## **Vision**

Individuals and families are strong, resilient, and thriving in their communities.



# SOCIAL DETERMINANTS OF HEALTH

4



# DIVISION OF ECONOMIC & HOUSING STABILITY (DEHS)

5

DEHS includes the following:

- Bureau of Child Development & Head Start Collaboration
- Bureau of Child Support Services
- Bureau of Employment Supports
- Bureau of Family Assistance
- Bureau of Housing Supports
- Comprehensive Family Support Services

*Additional data will be added to this document as it becomes available.*



# UNDUPLICATED OPEN CASES – ECONOMIC ASSISTANCE

6

Caseload	Week Ending												
	31-Jan (Baseline)	28-Feb	27-Mar	24-Apr	29-May	26-Jun	31-Jul	28-Aug	25-Sep	30-Oct	27-Nov	25-Dec	22-Jan
Open Cases (Unduplicated)	119,424	119,306	118,656	122,739	125,256	126,203	127,731	128,902	130,414	132,115	134,413	137,113	138,035
Adult Cash	7,413	7,404	7,360	7,438	7,485	7,464	7,393	7,298	7,116	6,996	6,893	6,807	6,519
FANF Cash	3,673	3,627	3,621	3,783	3,808	3,746	3,798	3,611	3,542	3,412	3,335	3,275	3,131
Medicaid	107,359	107,240	107,174	110,728	113,363	114,406	116,098	117,240	118,768	120,508	122,800	125,583	126,561
SNAP	38,347	38,228	37,935	40,101	40,638	38,391	37,612	37,062	36,687	37,012	36,722	36,480	35,396
Child Care	3,236	3,227	3,215	3,225	3,235	3,259	3,300	3,299	3,147	3,001	2,826	2,766	2,466
QMB/SLMB/QDWI	22,920	22,897	22,845	22,869	23,342	23,426	23,484	23,533	23,599	23,740	23,738	23,782	24,024

**\*Case equals household, not individual people. For example, one case could be a parent and two children or a single person. Data from other sources may reference individuals, not households, which will cause numbers to be reported differently.**

**\*These numbers are a point in time on the day the report is run; to get a true reflection, one should look at month to month changes.**

**FANF Cash** – provides financial assistance to eligible families with dependent children

**QMB** – Qualified Medicare Beneficiary Assistance

**SLMB** – Specified Low-Income Medicare Beneficiary

**QDWI** – Qualified Disabled & Working Individuals



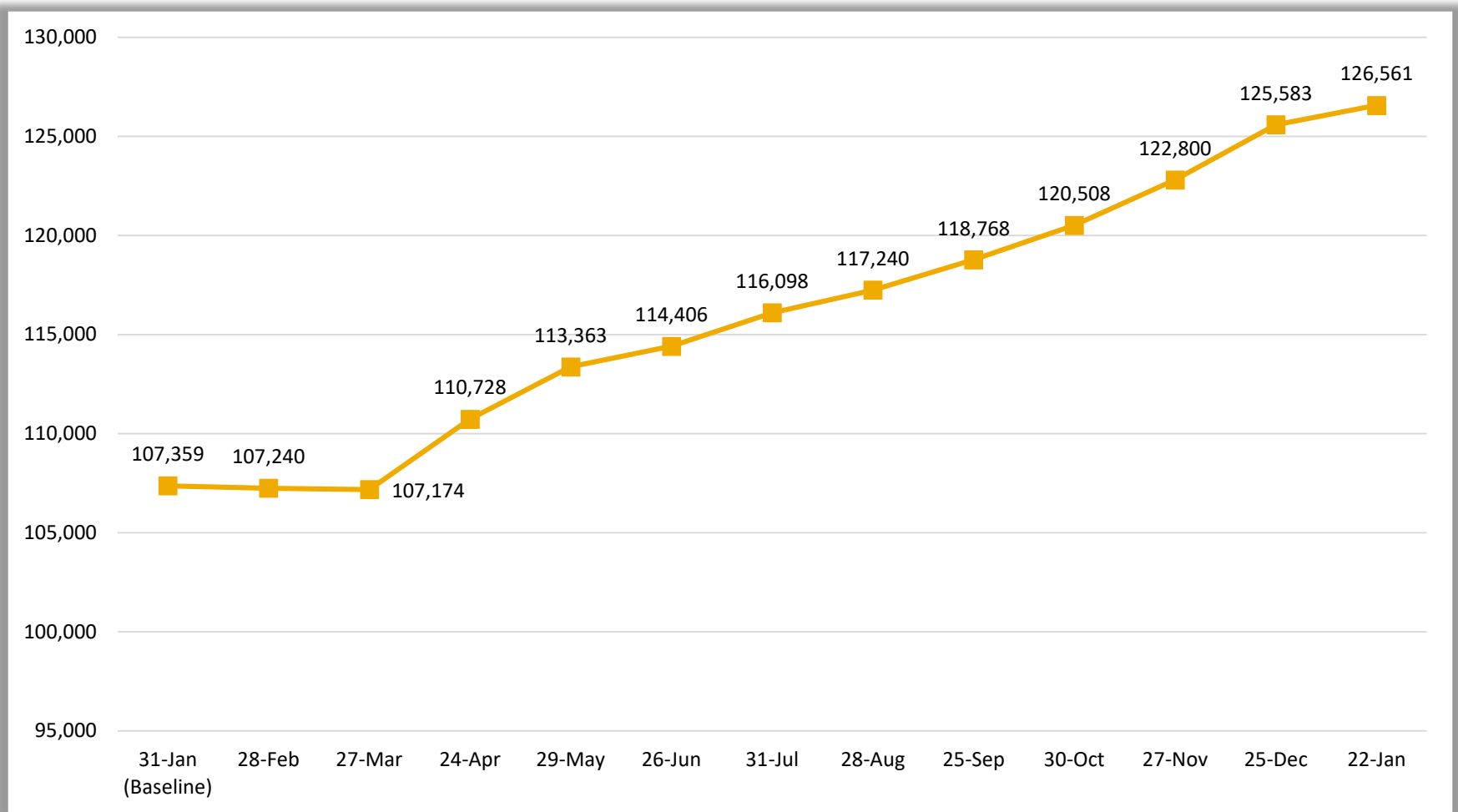
# UNDUPLICATED OPEN CASES – ECONOMIC ASSISTANCE

7



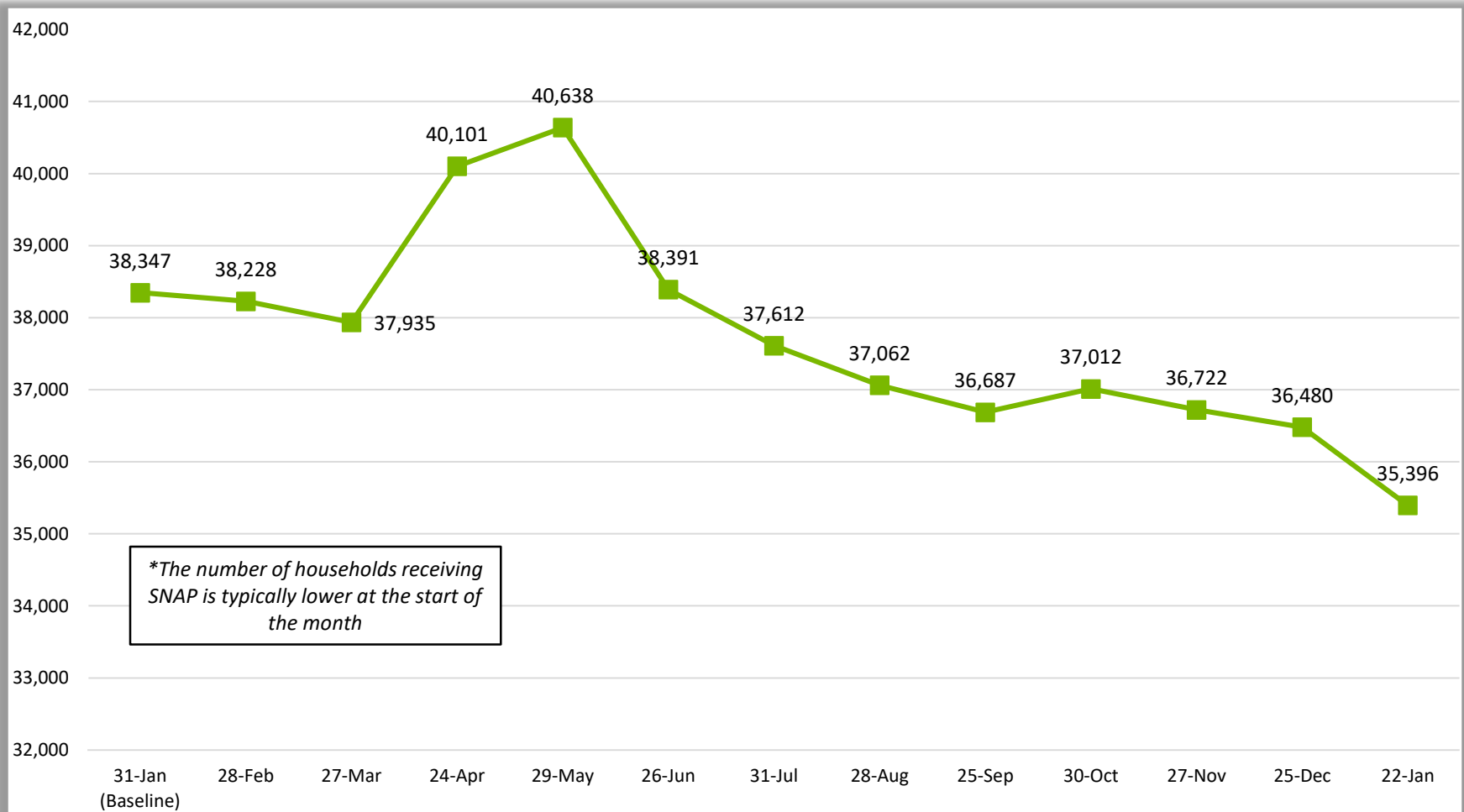
# MEDICAID CASELOAD NUMBERS

8





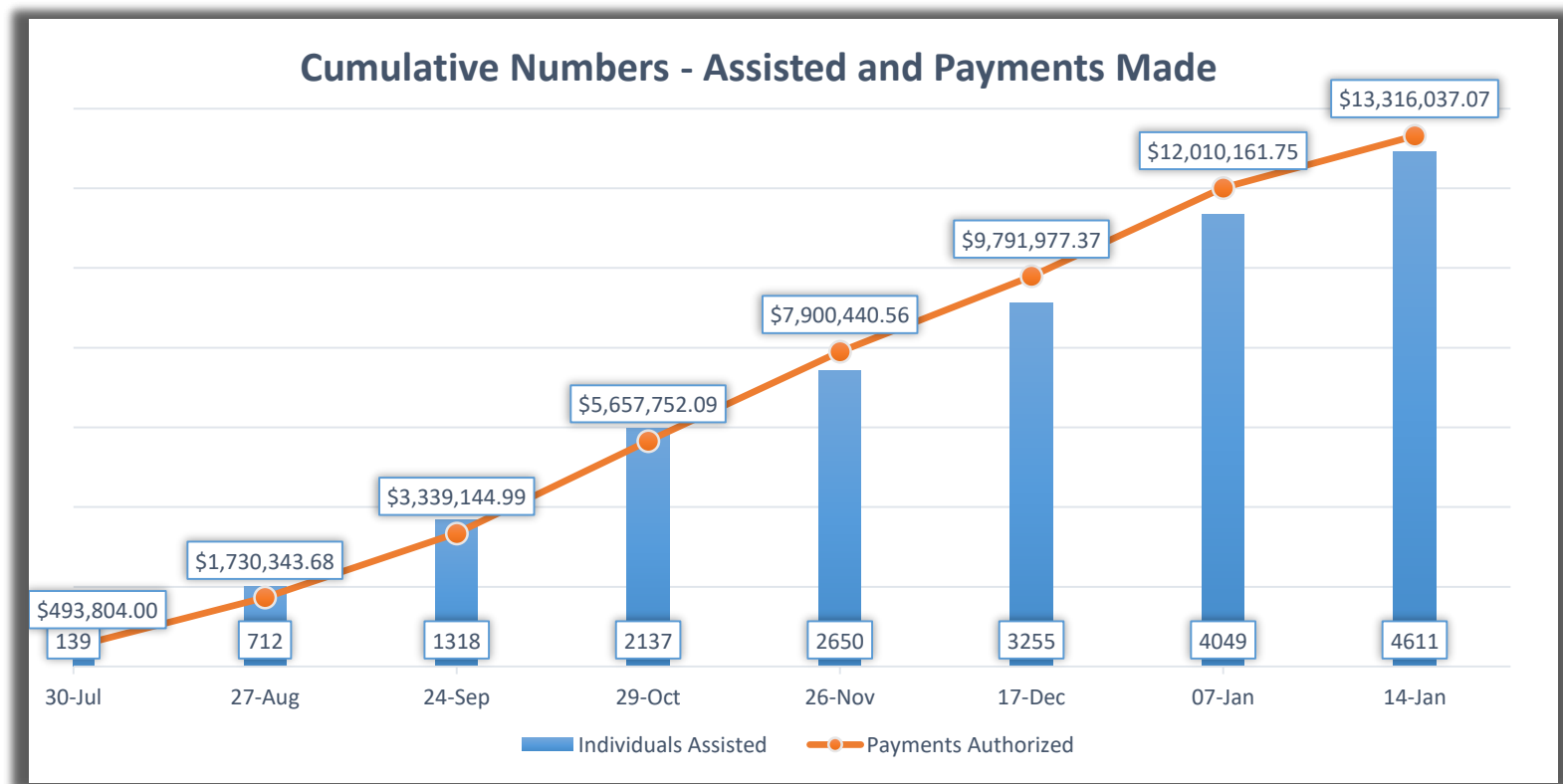
# SNAP CASELOAD NUMBERS



# NH Housing Relief Program

The NH Housing Relief Program was created to support families or individuals in need of housing assistance as a result of COVID-19.

Access to the program is through the five (5) Community Action Program agencies located throughout the state.



# INVESTMENT IN CHILD CARE DURING COVID-19

11

To date, over \$45.7M has been invested in the child care field. This enables 769 programs to offer 45,644 licensed or allowable capacity spaces across the state.

- Full Time School Age Children Cost Share and Infant/Toddler Disaster Days & Cost Share: \$9.6M
- Emergency Child Care Program: \$3M
- Child Care Recovery and Stabilization Program: \$19.6M
- Health and Safety Supplies: \$1M
- Infrastructure & Capacity Building: \$1.83M
- Child Care Recovery and Stabilizations Supplemental: \$10M



## **Additional investments this fall:**

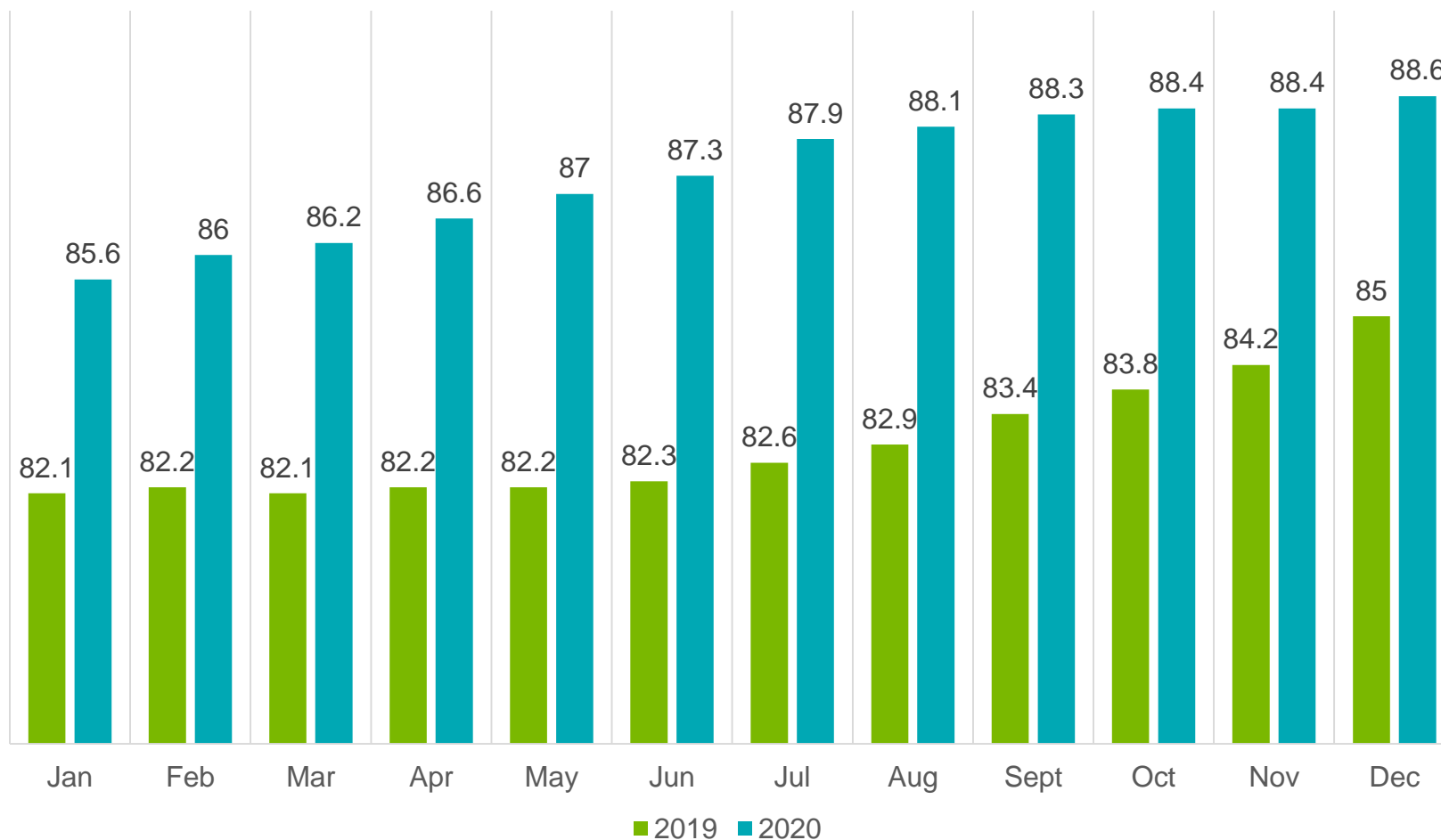
- Absentee billing related to COVID for all children with enrolled providers, August 3, 2020 – December 27, 2020: \$693,000
- Extension of full-time rate for school-age care for hours children would have been in school but for COVID-19 , September 7 – January 3, 2020: \$15,000



# BUREAU OF CHILD SUPPORT SERVICES – SUPPORT ORDERS

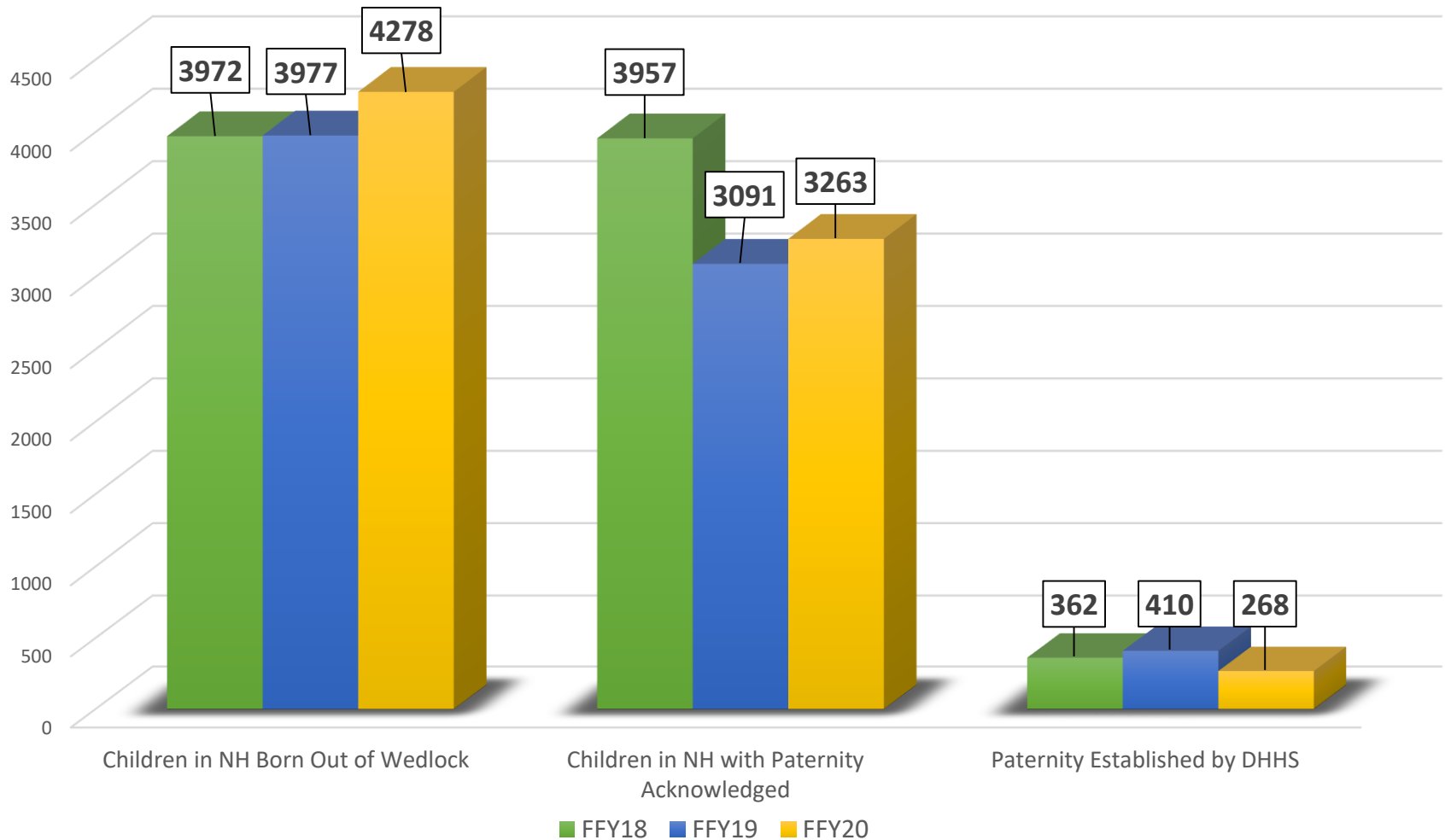
12

## Percentage of Orders Established in Total Caseload 2019 – 2020



# BUREAU OF CHILD SUPPORT SERVICES – PATERNITY

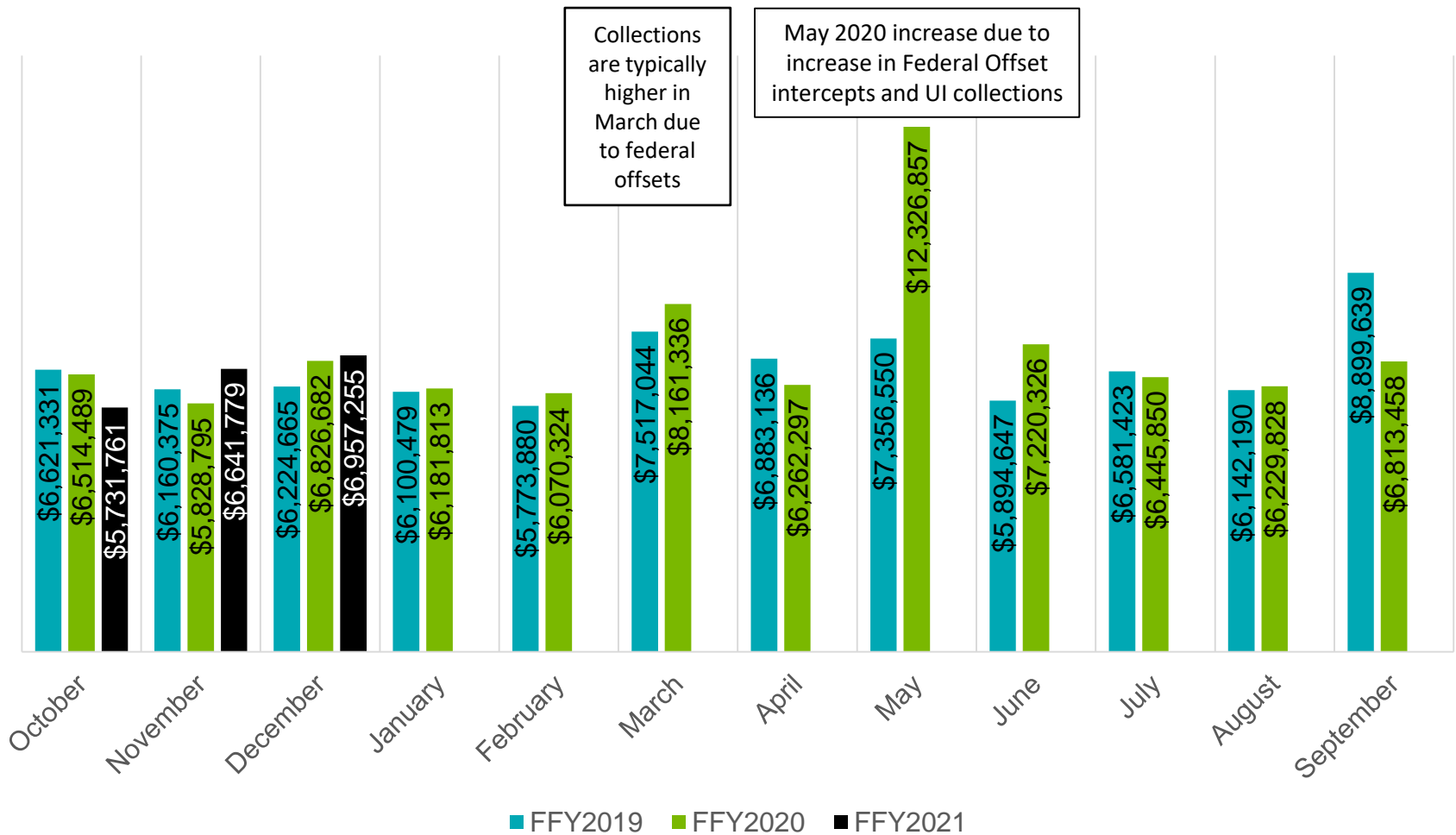
13



# BUREAU OF CHILD SUPPORT SERVICES – TOTAL COLLECTIONS

14

## Total Collections from All Sources by Month – Federal Fiscal Year 2019-2021





## Please contact:

- Marti Ilg, Deputy Director, DEHS  
[Marti.Ilg@dhhs.nh.gov](mailto:Marti.Ilg@dhhs.nh.gov)  
271- 9654
- Chris Santaniello, Director, DEHS  
[Christine.Santaniello@dhhs.nh.gov](mailto:Christine.Santaniello@dhhs.nh.gov)  
271-2023

