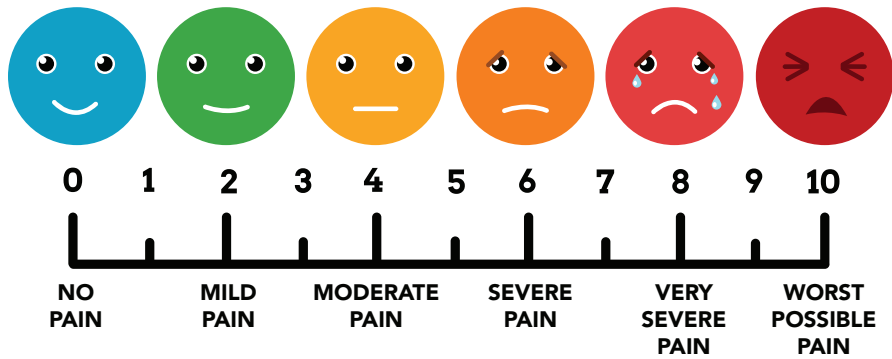


HOW DO YOU FEEL?



HOW LONG HAVE YOU HAD SYMPTOMS?

▶ MINUTES

▶ HOURS

▶ DAYS

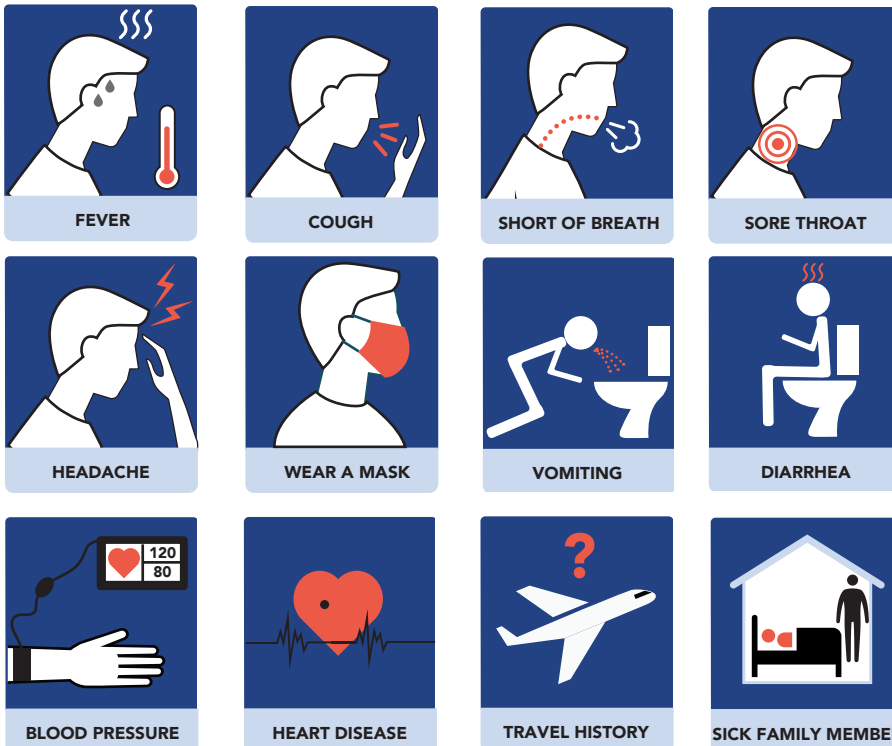
▶ WEEKS

▶ MONTHS

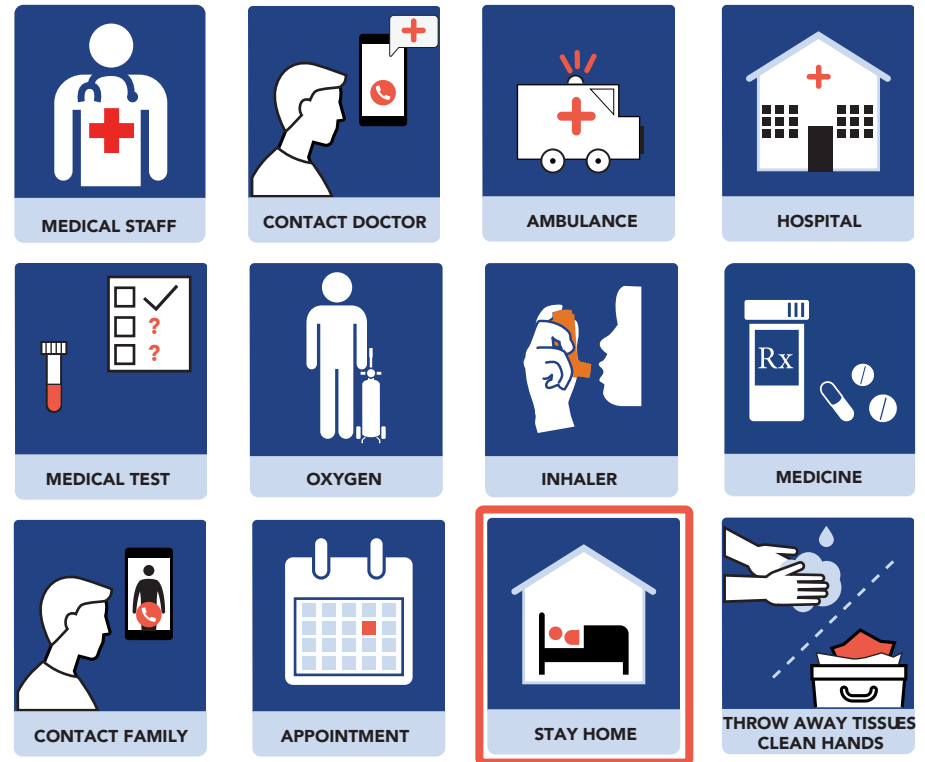
▶ YEARS



SITUATION, HISTORY & SYMPTOMS



TREATMENT & CARE



▶ DEVELOPED BY THE MASSACHUSETTS COMMISSION FOR THE DEAF AND HARD OF HEARING