

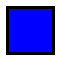


RABIES MONTHLY REPORT

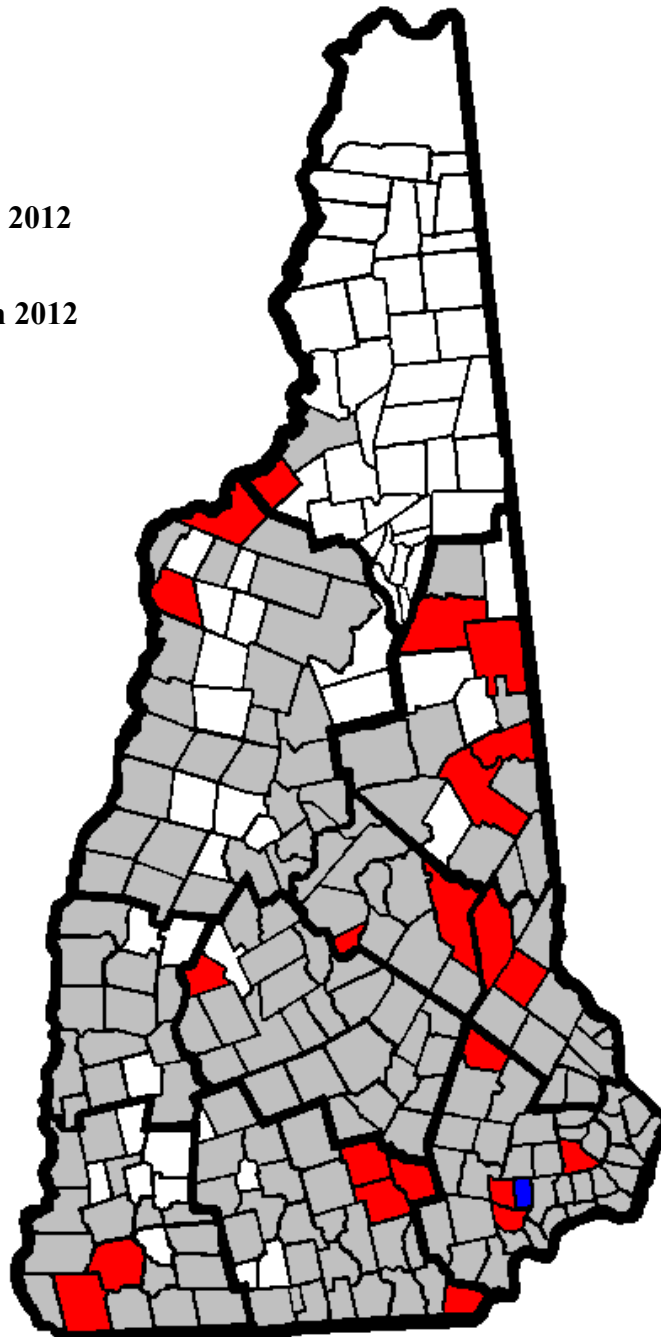


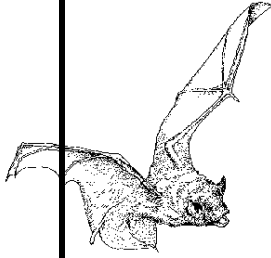
NH Division of Public Health Services
Public Health Laboratories
29 Hazen Drive Concord NH 03301

PROGRESSION OF RABIES EPIZOOTIC BY TOWN

December 31, 2012

-  First Reported in 2012
-  Previously and in 2012
-  1992 - 2011





RABIES MONTHLY REPORT

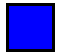


NH Division of Public Health Services

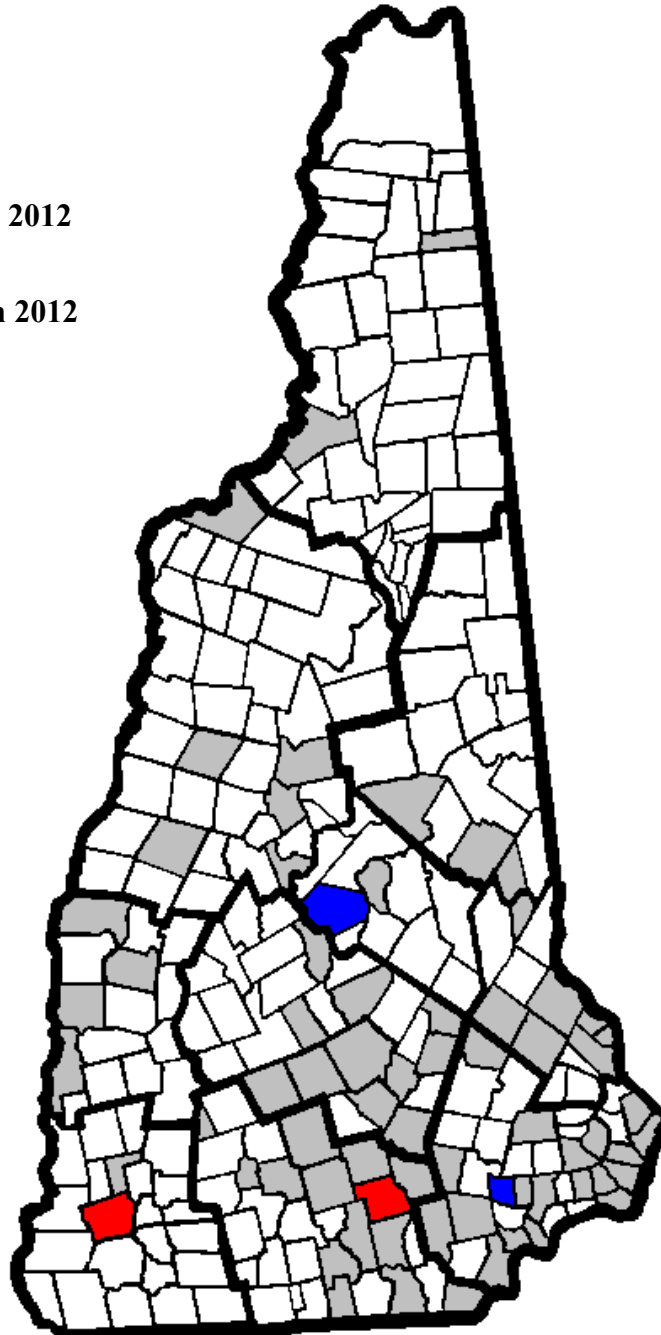
Public Health Laboratories

29 Hazen Drive Concord NH 03301

OCCURRENCE OF BAT RABIES BY TOWN

December 31, 2012

-  First Reported in 2012
-  Previously and in 2012
-  1992 - 2011



RABIES MONTHLY REPORT



NH Division of Public Health Services

Public Health Laboratories

29 Hazen Drive Concord NH 03301

POSITIVE ANIMAL RABIES IN NEW HAMPSHIRE - 2012

<u>DATE</u>	<u>ANIMAL</u>	<u>VARIANT</u>	<u>TOWN/CITY</u>	<u>COUNTY</u>
* 1/5/12	SKUNK	R	DANVILLE	ROCKINGHAM
1/6/12	SKUNK	R	EXETER	ROCKINGHAM
1/27/12	RACCOON	R	WINCHESTER	CHESHIRE
3/9/12	RACCOON	R	BEDFORD	HILLSBOROUGH
4/24/12	SKUNK	R	LITTLETON	GRAFTON
5/8/12	BAT (Big Brown)	--	BEDFORD	HILLSBOROUGH
5/14/12	COYOTE	R	MANCHESTER	HILLSBOROUGH
5/29/12	RACCOON	R	DALTON	COOS
6/12/12	BAT (Big Brown)	--	SANBORNTON	BELKNAP
6/19/12	RACCOON	R	PELHAM	HILLSBOROUGH
6/25/12	WOODCHUCK	R	SANDOWN	ROCKINGHAM
6/28/12	RACCOON	R	SANDOWN	ROCKINGHAM
7/31/12	FOX (Gray)	R	BARTLETT	CARROLL
8/1/12	RACCOON	R	OSSIPPEE	CARROLL
8/10/12	RACCOON	R	NORTHWOOD	ROCKINGHAM
8/10/12	FOX (Gray)	R	FREEDOM	CARROLL
8/21/12	CAT	R	FARMINGTON	STRAFFORD
8/27/12	RACCOON	R	HAMPSTEAD	ROCKINGHAM
9/14/12	SKUNK	R	NEW LONDON	MERRIMACK
9/18/12	RACCOON	R	TILTON	BELKNAP
9/25/12	BAT (Big Brown)	--	SANDOWN	ROCKINGHAM
10/3/12	BAT (Big Brown)	--	KEENE	CHESHIRE
10/11/12	RACCOON	R	ALTON	BELKNAP
10/17/12	RACCOON	R	GOFFSTOWN	HILLSBOROUGH
10/17/12	SKUNK	R	SWANZEY	CHESHIRE
11/6/12	SKUNK	R	BATH	GRAFTON
11/16/12	SKUNK	R	NEW DURHAM	STRAFFORD
12/20/12	RACCOON	R	CONWAY	CARROLL

* NEW TOWN : FIRST LABORATORY CONFIRMED POSITIVE EPIZOOTIC ANIMAL

TOTAL NUMBER OF SPECIMENS

	<u>2012</u>		<u>2011</u>	
	<u>December</u>	<u>YTD</u>	<u>December</u>	<u>YTD</u>
Received	27	465	22	436
Negative	26	431	19	405
Positive	1	28	3	25
Unsatisfactory	0	6	0	6

R = RACCOON VARIANT RABIES STRAIN