

# State of New Hampshire

DEPARTMENT OF HEALTH AND HUMAN SERVICES

129 PLEASANT STREET, CONCORD, NH 03301-3857  
603-271-9200 FAX: 603-271-4912 TDD ACCESS: RELAY NH 1-800-735-2964

JEFFREY A. MEYERS  
COMMISSIONER

September 25, 2017

The Honorable Neal M. Kurk, Chairman  
Fiscal Committee of the General Court  
State House  
Concord, NH 03301

## Re: **INFORMATIONAL ITEM: Health and Human Services Dashboard SFY18**

### Information

The Department of Health and Human Services (DHHS) hereby submits as an information item the Department's monthly dashboard in order to inform the legislature and the public on the current status of the utilization of the Department's programs and services and the related implications for the Department's budget. Please note that financial position and caseload information contained herein is current through August 31, 2017. (SFY 18).

### Explanation

#### Standard Medicaid Caseload Trends

	SFY 15	SFY 16	SFY 17				SFY 18	
	6/30/2015	6/30/2016	9/30	12/31	3/31/2017	6/31/2017	7/31/2017	8/31/2017
Medicaid Standard	138,252	137,372	136,022	134,636	133,829	133,054	132,291	132,680
<i>% inc/dec over prior 6.30</i>		<i>-0.64%</i>				<i>-3.14%</i>	<i>-0.57%</i>	<i>0.29%</i>
NHHPP	41,657	49,522	50,911	52,474	53,099	52,313	51,973	52,185
<i>% inc/dec over prior 6.30</i>		<i>18.88%</i>				<i>5.64%</i>	<i>0.65%</i>	<i>-0.41%</i>
Food Stamps (SNAP)	105,322	96,872	95,421	94,191	93,050	91,633	90,522	90,231
<i>% inc/dec over prior 6.30</i>		<i>-8.02%</i>				<i>-5.41%</i>	<i>1.21%</i>	<i>0.32%</i>
FANF Persons	6,138	5,107	4,965	4,999	5,011	4,972	4,983	5,439
<i>% inc/dec over prior 6.30</i>		<i>-16.80%</i>				<i>-2.64%</i>	<i>-0.22%</i>	<i>-9.15%</i>
APTD Persons	7,526	6,916	6,837	6,732	6,698	6,655	6,565	6,563
<i>% inc/dec over prior 6.30</i>		<i>-8.11%</i>				<i>-3.77%</i>	<i>1.35%</i>	<i>0.03%</i>
LTC - Persons	7,109	7,065	7,035	7,000	7,130	7,480	7,399	7,414
<i>% inc/dec over prior 6.30</i>		<i>-0.62%</i>				<i>5.87%</i>	<i>1.08%</i>	<i>-0.20%</i>

The SFY18 budget assumes that caseloads for the standard Medicaid program would drop by 2%. Thus far, as of August 31<sup>st</sup>, caseloads have not dropped but have increased slightly by .3%. Depending upon the caseload trend in coming months, there could be a funding shortfall by the end of the Fiscal year. We will continue to report Medicaid caseload trends and its impact on the SFY18 budget.

#### Developmental Disability (DD) Waitlist

At the start of SFY18, the Waiting List was at 227 people. As of July 31, 2017, this number decreased to 164 people waiting for services and as of August 31, 2017 this number decreased to 158 people waiting for services. A total of 26 people came off and 20 people were added in the month of August. Of those added to the Waiting List in August, none were students leaving the school system, 6 were people newly eligible for services, and 14 were those people

who are receiving services and are requesting additional services. Of the total 158 people waiting, 16 are students transitioning into the adult service system, 30 are people newly eligible for services, and 112 are receiving some level of services and have requested additional services. As expected, this number went down slightly in August.

The approved budget has significantly increased funding for DD services. The Area Agencies have submitted Wait List Proposals to serve 267 people during the SFY 2018. The intent will be, as of today to serve an additional 214 people in SFY 2019 for a total of 481 people in the Biennium. Based on the trend for services in the last fiscal year, especially for those persons who are already receiving services but require additional services, the demand for services for the Biennium could be as high as 715 persons. It is still very early in this Biennium to predict how many people may seek additional services. The Bureau of Developmental Services is meeting with each Area Agency during the month of September to review those individuals they feel they are unable to serve and this information will be included in the next report.

Included in this Dashboard are new tables representing Wait List activity for the Developmental Disabilities, Acquired Brain Disorder, and In Home Support clients (see attached Tables 10 and 11).

**Substance Misuse Disorder Reporting (SUD)**

Beginning this month, the Department is reporting to Fiscal on the expenditure and use of funding for Substance Misuse Disorder services. This information is contained in Table 15, which highlights the contracts issued in SFY17 and spend through 8/31/17. While most of these contracts had a 6/30/17 end date, providers are still filing final invoices to be charged for prior year services. While we do not anticipate the unspent contract amounts to change significantly, they may. Beginning in the October, the Department will report out the new SFY18 contracts and corresponding spend each month going forward. A high level summary of the SFY17 contracts is noted below:

	FINAL SFY17			SFY18		
	As of June 30, 2017			as of 8/31/17		
	Total Amount	Actual Provider Contract Spent	Provider Contract Funds Unspent	Carry Forward Amount	Actual Provider Contract Spent	Provider Contract Funds Unspent
<b><u>GOVERNOR'S COMMISSION</u></b>						
Amount Encumbered for SFY17 Contracts	5,433,124	(3,792,929)	1,640,195	\$ 1,640,195	\$ (363,409)	\$ 1,276,786
<b><u>CLINICAL / TREATMENT</u></b>						
Amount Encumbered for SFY17 Contracts	16,731,152	(10,973,458)	5,757,694	5,757,694	(2,056,409)	3,701,285
<b><u>PREVENTION</u></b>						
Amount Encumbered for SFY17 Contracts	3,613,180	(2,659,836)	953,344	953,344	(416,014)	537,330

**Implementation of Mental Health Measures under HB 400 and HB 517**

The Department is providing the following summary of the status of actions taken to implement the Mental Health measures in HB 400 and HB 517, as of August 10, 2017:

**Evaluation of Inpatient Bed Capacity:**

The Request for Proposals (RFP) was released by June 30<sup>th</sup> and 4 applications have been received. The review team is now actively reviewing the responses and a contract is being presented to the Governor and Council at its September 27<sup>th</sup> meeting.

Mobile Crisis Team/Apartments:

The RFP was released by June 30<sup>th</sup>. Although the deadline to respond was extended three times, no applications were received by the closing date. A new RFP has been issued that further adds flexibility to the mobile crisis model to be deployed s to respond to the very fluid dynamics of the current hospital emergency department waiting crisis.

Designated Receiving Facility Beds:

The Request for Applications (RFA) was released by June 30<sup>th</sup>. The date for responses was extended after amending the RFA to increase the time of the contracting period to 4 years in an effort to incentivize potential bidders. No applications have been receiving to date. The RFA remains open until the program needs are met.

Transitional Community Housing:

The RFA was released by June 30<sup>th</sup> and 3 applications were received. The proposals are under review and a contract will be brought to the Governor and Council for approval in October.

Data Management System:

The DHHS issued a Request for Information (RFI) and 4 responses were received. The RFP, developed by the DHHS and DOIT was issued with responses due by October 20<sup>th</sup>.

New 10 year Plan:

The Department is seeking assistance with the development of the plan from two sources. The DHHS is bringing forth a contract to the Governor and Council on September 27<sup>th</sup> with an entity with experience in the behavioral health field in New Hampshire to provide on-the-ground assistance. We also are working with NASHMPD (National Association of State Mental Health Directors) for technical/consulting assistance to complement the State-led work.

Due Process Rights for Patients:

The Department issued a report on August 31, 2017 identifying a potential plan for implementing court-conducted hearings on IEA admissions within 72 hours of presentment and assessment at a hospital emergency department. The Department has also issued a second report on the requirements of a recommended pilot program by four (4) hospitals.

Plan required for removal of certain persons from NHH: Use of Philbrook Center:

The Department is looking at several options as required by the legislation, including the retrofitting of the Philbrook Building. We are looking at other children's facilities for design and programming options, and we will be obtaining preliminary cost projections. A report will be submitted as required by statute by November 1, 2017.

Sununu Youth Services Center

The current average census at SYSC for the month of August was 50, of which 43 are committed youth. Traditionally, the census is lower during summer months leading into the start of the school year. The current trend appears to be influenced by the passage of changes to the state's commitment and detention laws in House Bill 517.

Although certain of those provisions do not take effect legally until 2018, it appears that judicial practice has already been influenced by this legislation. Over the past 24 months admissions for both detained and committed youth have averaged 28 monthly. For the past 2 months – since the passage of House Bill 517, monthly admissions were 20 in July and 17 for August, 2017.

Respectfully submitted,



Jeffrey A. Meyers  
Commissioner

Enclosures

cc:

His Excellency, Governor Christopher T. Sununu  
The Honorable Neal M. Kurk, Chairman, House Finance Committee  
The Honorable Chuck W. Morse, President, NH State Senate  
The Honorable Shawn Jasper, Speaker, NH House of Representatives  
Michael W. Kane, Legislative Budget Assistant

**Executive Council**

The Honorable Andru Volinsky  
The Honorable David Wheeler

The Honorable Russell Prescott  
The Honorable Joseph D. Kenney

The Honorable Christopher Pappas

**House Finance Committee**

The Honorable Lynne Ober  
The Honorable Tracy Emerick  
The Honorable Peter Leishman  
The Honorable Gerald Griffin  
The Honorable William Hatch  
The Honorable Mary Jane Wallner  
The Honorable Patricia Lovejoy  
The Honorable Peter Spanos

The Honorable Robert Walsh  
The Honorable Karen Umbergerdoir  
The Honorable Kenneth Weyler  
The Honorable Mary Allen  
The Honorable Thomas Buco  
The Honorable Daniel Eaton  
The Honorable Marjorie Smith  
The Honorable Cindy Rosenwald

The Honorable Frank Byron  
The Honorable Betsy McKinney  
The Honorable David Bates  
The Honorable David Danielson  
The Honorable Erin Hennessey  
The Honorable Sharon Nordgren  
The Honorable Katherine Rogers  
The Honorable Timothy Twombly

**Senate Finance Committee**

The Honorable Gary Daniels  
The Honorable John Reagan

The Honorable Lou D'Allesandro  
The Honorable Bob Giuda

The Honorable Dan Feltes

**DEPARTMENT OF HEALTH AND HUMAN SERVICES**



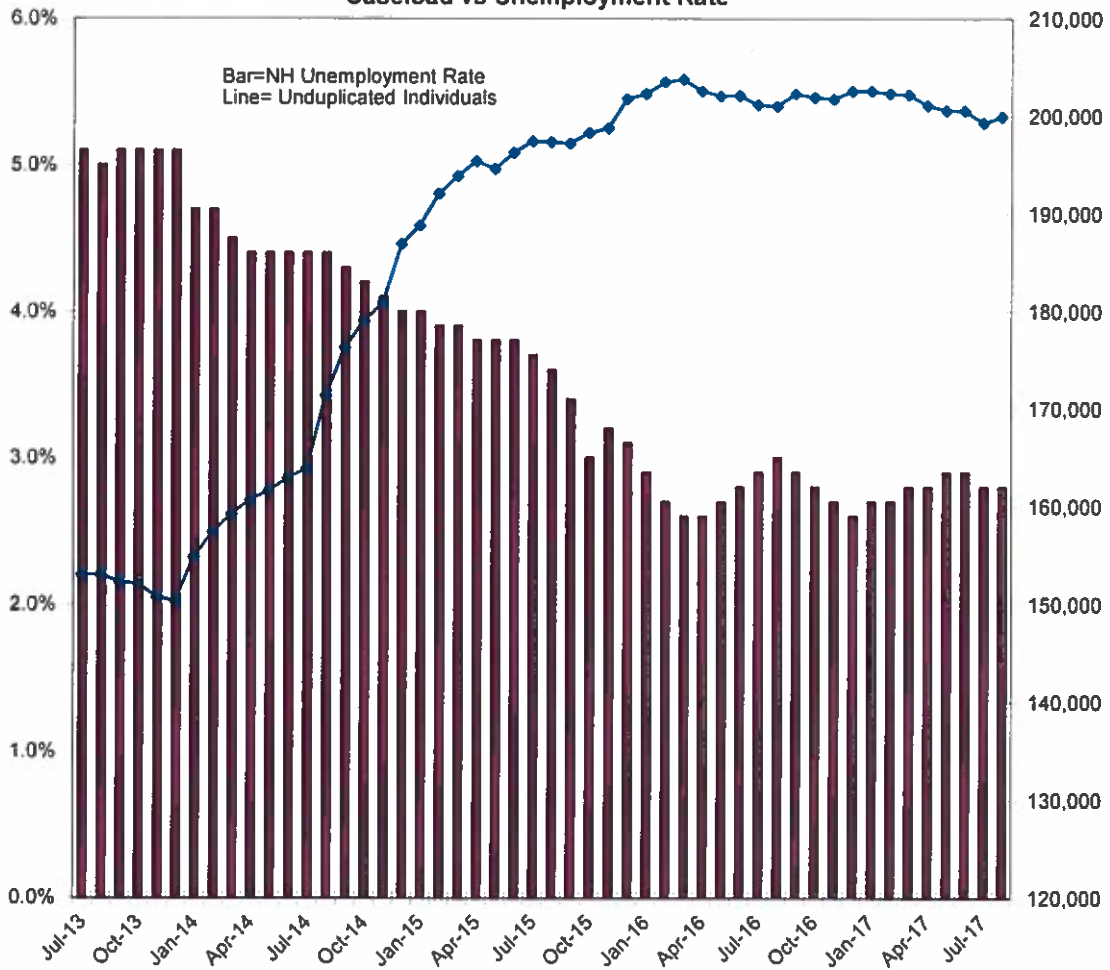
**OPERATING STATISTICS DASHBOARD**

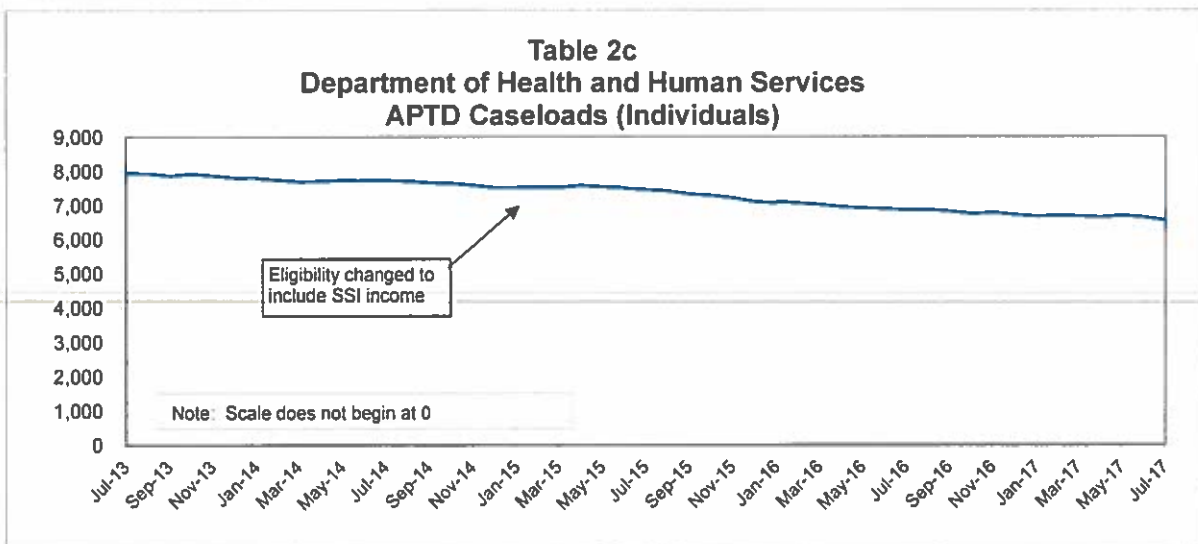
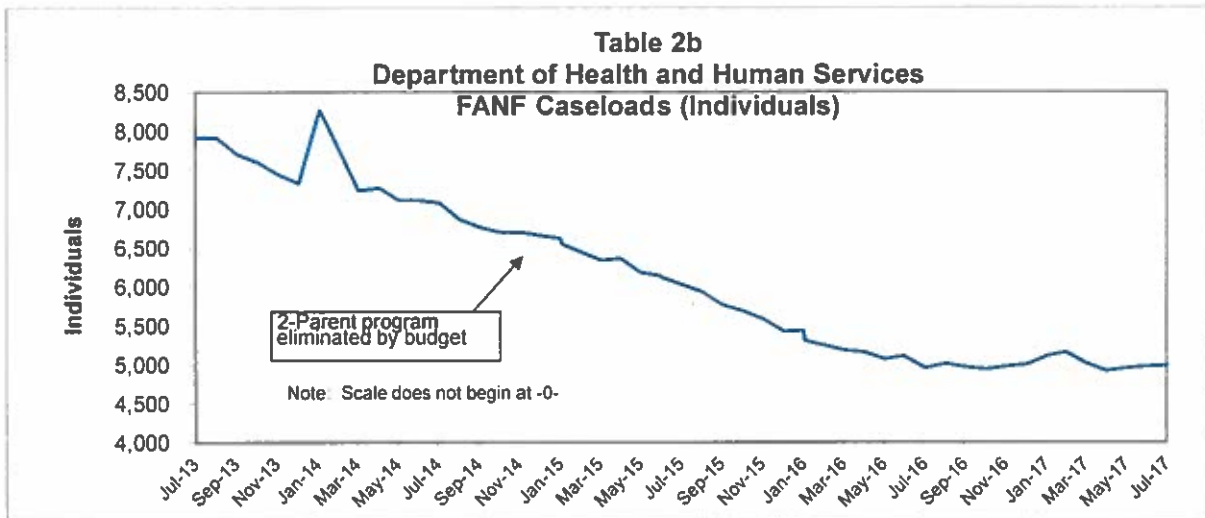
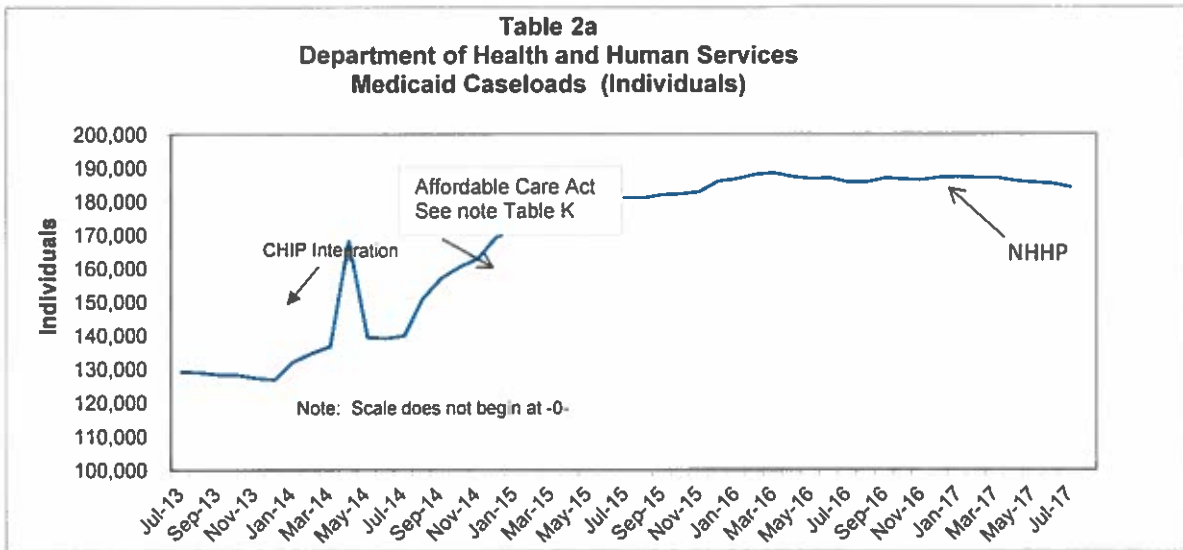
**Fiscal Meeting September 2017**

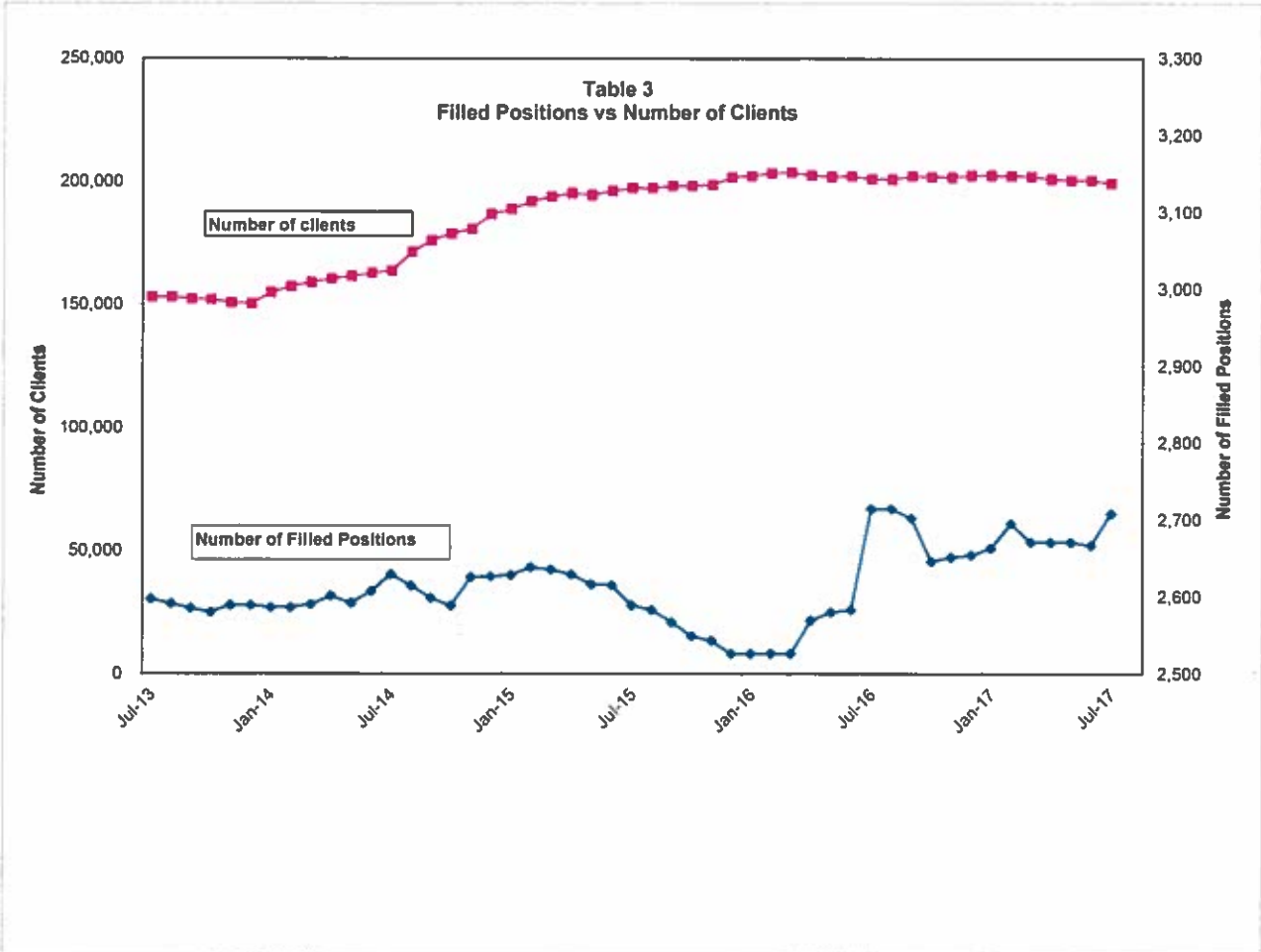
**SFY18**

Data/Caseloads as of 8/31/17  
Except for MH as of 6/30/17 and SUD

**TABLE 1**  
**Department of Health and Human Services**  
**Caseload vs Unemployment Rate**









	A	B	C	D	E	F	G	H
1	<b>Table 4</b>							
2	<b>Department of Health and Human Services</b>							
3	<b>Operating Statistics</b>							
4	<b>Children In Services</b>							
5								
6		<b>DCYF</b>	<b>DCYF</b>	<b>Family Foster</b>	<b>Residential</b>	<b>Child Care</b>	<b>Child Care</b>	<b>SYSC</b>
7		<b>Referrals</b>	<b>Assessments</b>	<b>Care</b>	<b>Placement</b>	<b>Emplmnt</b>	<b>Wait List</b>	<b>Secure</b>
8			<b>Closed</b>	<b>Placement</b>		<b>Related</b>		<b>Census</b>
9		<b>Actual</b>	<b>Actual</b>	<b>Actual</b>	<b>Actual</b>	<b>Actual</b>	<b>Actual</b>	<b>Actual</b>
82	Jul-15	1,120	908	564	322	5,651	0	48
83	Aug-15	1,074	743	571	319	5,588	0	51
84	Sep-15	1,298	895	570	304	5,528	0	49
85	Oct-15	1,336	863	591	308	5,192	0	54
86	Nov-15	1,182	680	605	303	5,219	0	59
87	Dec-15	1,280	825	647	316	5,267	0	65
88	Jan-16	1,178	736	658	335	5,370	0	72
89	Feb-16	1,143	2,569	666	336	5,201	0	73
90	Mar-16	1,458	1,165	691	341	5,269	0	74
91	Apr-16	1,231	731	701	342	5,245	0	71
92	May-16	1,376	612	705	349	5,230	0	73
93	Jun-16	1,139	889	720	346	9,137	0	72
94	Jul-16	978	762	729	327	5,326	0	66
95	Aug-16	1,243	918	736	323	5,279	0	57
96	Sep-16	1,364	868	763	308	5,185	0	59
97	Oct-16	1,313	687	786	325	5,013	0	61
98	Nov-16	1,210	633	799	324	4,978	0	60
99	Dec-16	1,154	493	824	333	4,969	0	62
100	Jan-17	1,326	780	838	348	4,962	0	66
101	Feb-17	1,307	751	864	352	4,921	0	62
102	Mar-17	1,486	853	902	361	4,998	0	59
103	Apr-17	1,269	663	917	372	5,007	0	56
104	May-17	1,745	1,212	975	374	5,102	0	67
105	Jun-17	1,466	1,159	1,025	362	5,104	0	61
106	Jul-17	1,242	961	1,023	352	5,096	0	51
107	Aug-17	1,380	1,130	1,034	355	5,059	0	49
108	Sep-17							
109	Oct-17							
110	Nov-17							
111	Dec-17							
112	Jan-18							
113	Feb-18							
114	Mar-18							
115	Apr-18							
116	May-18							
117	Jun-18							
118								
119	<b>ANNUAL AVERAGE</b>							
124	SFY15	1,261	764	537	310	5,479	0	45
125	SFY16	1,235	968	641	327	5,658	0	63
126	SFY17	1,322	815	847	342	5,070	0	61
127	SFY18-YTD	1,311	1,046	1,029	354	5,078	0	50
128								
129	<b>Source of Data</b>							
130	Column							
131	B	DCYF SFY Management Database Report: Bridges.						
132	C	DCYF Assessment Supervisory Report: Bridges.						
133	D	Bridges placement authorizations during the month, unduplicated.						
134	E	Bridges placement authorizations during the month, unduplicated.						
135	F	Bridges Expenditure Report, NHB-OAR8-128						
136	G	Child Care Wait List Screen: New Heights						
137	H	Bridges Service Day Query - Bed days divided by days in month						

Table 5  
Department of Health and Human Services  
Operating Statistics

DCYF- CHILD PROTECTION SOCIAL WORKERS - STAFFING UPDATE

	ASSESSMENT WORKERS				FAMILY SERVICE WORKERS				INTAKE WORKERS			
	Positions/ Authorized	Staff with Cases	New hires in trainin g/ on leave	Vacant	Positions/ Authorized	Staff with Cases	New hires in training / on leave	Vacant	Positions/ Authorized	Staff with Cases	New hires in training/ on leave	Vacant
<b>SFY 17</b>												
Jul-16	84	55	18	10	81	69	11	1	10	10	0	0
Aug-16	84	54	16	14	81	66	10	5	10	9	1	0
Sep-16	84	51	23	10	81	69	9	3	10	10	0	0
Oct-16	84	49	26	9	81	66	13	2	10	9	1	0
Nov-16	84	53	25	6	81	66	9	6	10	9	1	0
Dec-16	84	61	19	4	81	68	6	7	10	10	0	0
Jan-17	116	70	21	25	81	71	4	6	10	10	0	0
Feb-17	116	68	26	22	81	68	9	4	10	10	0	0
Mar-17	116	65	27	24	81	68	9	4	10	8	1	1
Apr-17	116	69	25	22	81	65	14	2	10	8	1	1
May-17	115	70	24	21	82	61	17	4	10	8	1	1
Jun-17	115	75	28	12	82	60	15	7	10	9	1	0
<b>SFY 18</b>												
Jul-17	125	76	24	25	91	61	14	3	11	10	0	1
Aug-17	125	68	31	23	91	60	14	3	11	10	0	1
Sep-17												
Oct-17												
Nov-17												
Dec-17												
Jan-18												
Feb-18												
Mar-18												
Apr-18												
May-18												
Jun-18												

Note: the newly authorized positions (20) budgeted in SFY18 are reflected in the counts above as authorized and vacant as they are currently being established & activated by DOP (July and August)

Note: Assessment workers include statewide assessment team workers, but does not include SIU; Family service workers are all workers that carry a caseload, it does not include Resource workers.

**TABLE 6**  
**Department of Health and Human Services**  
**Operating Statistics**

**DCYF- Sununu Youth Services Center Census**

<b>SFY 17</b>	<b>Average Daily Census</b>	<b>ADC Committed Youth</b>	<b>ADC Detained Youth</b>	<b>Admissions</b>
Jul-16	68	54	14	22
Aug-16	60	50	9	28
Sep-16	63	47	15	37
Oct-16	64	51	13	28
Nov-16	64	52	12	29
Dec-16	64	57	7	23
Jan-17	68	57	11	23
Feb-17	67	57	10	21
Mar-17	61	50	11	30
Apr-17	58	48	10	21
May-17	69	50	20	33
Jun-17	64	48	16	27
<b>SFY 18</b>	<b>Average Daily Census</b>	<b>ADC Committed Youth</b>	<b>ADC Detained Youth</b>	<b>Admissions</b>
Jul-17	53	43	10	20
Aug-17	50	43	8	17
Sep-17				
Oct-17				
Nov-17				
Dec-17				
Jan-18				
Feb-18				
Mar-18				
Apr-18				
May-18				
Jun-18				

"ADC" = Average Daily Census



	A	B	C	D	E
1	<b>Table 8</b>				
2	<b>Department of Health and Human Services</b>				
3	<b>Operating Statistics</b>				
4	<b>Clients Served by Community Mental Health Centers</b>				
5					
6	<b>Annual Totals</b>				
7		<b>Adults</b>	<b>Children</b>	<b>Total</b>	
8	<b>FY2012</b>	36,407	13,122	49,529	
9	<b>FY2013</b>	34,819	13,013	47,832	
10	<b>FY2014</b>	35,657	14,202	49,859	
11	<b>FY2015</b>	34,725	10,736	45,461	
12	<b>FY2016</b>	32,600	11,699	44,299	
13	<b>FY2017</b>	30,597	11,432	42,029	
14					
15		<b>Adults</b>	<b>Children</b>	<b>Total</b>	
28	Jul-15	15,467	5,741	21,208	
29	Aug-15	15,213	5,806	21,019	
30	Sep-15	15,232	5,769	21,001	
31	Oct-15	15,324	6,027	21,351	
32	Nov-15	14,438	5,957	20,395	
33	Dec-15	14,753	6,084	20,837	
34	Jan-16	15,150	5,637	20,787	
35	Feb-16	15,393	5,041	20,434	
36	Mar-16	15,474	5,903	21,377	
37	Apr-16	14,918	5,776	20,694	
38	May-16	14,691	6,225	20,916	
39	Jun-16	14,756	5,876	20,632	
40	Jul-16	14,225	5,538	19,763	
41	Aug-16	15,017	5,694	20,711	
42	Sep-16	14,456	5,633	20,089	
43	Oct-16	14,106	5,743	19,849	
44	Nov-16	14,327	6,151	20,478	
45	Dec-16	13,955	6,336	20,291	
46	Jan-17	14,994	5,890	20,884	
47	Feb-17	14,529	5,904	20,433	
48	Mar-17	14,995	6,130	21,125	
49	Apr-17	14,440	6,040	20,480	
50	May-17	15,211	6,362	21,573	
51	Jun-17	14,961	6,240	21,201	
52	Jul-17				
53	Aug-17				
54	Sep-17				
55	Oct-17				
56	Nov-17				
57	Dec-17				
58	Jan-18				
59	Feb-18				
60	Mar-18				
61	Apr-18				
62	May-18				
63	Jun-18				
64					
65	<b>Notes:</b>				
66	1. Monthly data is a duplicated count.				
67	2. Year-end data is unduplicated.				



	A	B	C	D	E	F	G	H	I	J	K	L	M	N	O
1	<b>Table 10</b>														
2	<b>Department of Health and Human Services</b>														
3	<b>Operating Statistics</b>														
4															
5	<b>Developmental Disability Waitlist</b>														
6															
7		<b>Students transitioning into the adult service system (A's)</b>					<b>New eligibles (B's)</b>					<b>Those requiring additional services (C's)</b>			
8		<b>Begin WL</b>	<b>OFF (-)</b>	<b>NEW (+)</b>	<b>Ending WL</b>		<b>Begin WL</b>	<b>OFF (-)</b>	<b>NEW (+)</b>	<b>Ending WL</b>		<b>Begin WL</b>	<b>OFF (-)</b>	<b>NEW (+)</b>	<b>Ending WL</b>
9	Jul-16				36					32					98
10	Aug-16	36	(3)	8	41		32	(3)	8	37		98	(2)	8	104
11	Sep-16	41	(6)	7	42		37	(1)	11	47		104	0	17	121
12	Oct-16	42	(7)	9	44		47	(3)	0	44		121	(21)	15	115
13	Nov-16	44	(14)	3	33		44	(7)	4	41		115	(36)	8	87
14	Dec-16	33	(1)	6	38		41	(1)	4	44		87	(4)	12	95
15	Jan-17	38	(2)	13	49		44	(1)	0	43		95	(6)	13	102
16	Feb-17	49	(1)	4	52		43	(3)	2	42		102	(7)	11	106
17	Mar-17	52	(6)	9	55		42	(6)	5	41		106	(10)	32	128
18	Apr-17	55	(2)	4	57		41	(13)	3	31		128	(10)	5	123
19	May-17	57	(3)	10	64		31	(1)	3	33		123	0	13	136
20	Jun-17	64	(1)	5	68		33	(4)	1	30		136	(16)	9	129
21	<b>TOTALS FOR SFY 17</b>	<b>36</b>	<b>(46)</b>	<b>78</b>	<b>68</b>		<b>32</b>	<b>(43)</b>	<b>41</b>	<b>30</b>		<b>98</b>	<b>(112)</b>	<b>143</b>	<b>129</b>
22															
23	<b>SFY 18</b>														
24	Jul-17	68	(46)	0	22		30	(17)	15	28		129	(44)	29	114
25	Aug-17	22	(6)	0	16		28	(6)	8	30		114	(14)	12	112
26	Sep-17														
27	Oct-17														
28	Nov-17														
29	Dec-17														
30	Jan-18														
31	Feb-18														
32	Mar-18														
33	Apr-18														
34	May-18														
35	Jun-18														
36	<b>TOTALS FOR SFY 18</b>	<b>68</b>	<b>(52)</b>	<b>0</b>	<b>16</b>		<b>30</b>	<b>(23)</b>	<b>23</b>	<b>30</b>		<b>129</b>	<b>(58)</b>	<b>41</b>	<b>112</b>
37															
38															
39															
40	Source: Registry														

**Table 11**  
**Department of Health and Human Services**  
**Operating Statistics**

**Acquired Brain Disorder (ABD) & In-Home Supports (IHS) Waitlist**

	ABD Waitlist (1)			Ending WL
	Begin WL	OFF (-)	NEW (+)	
Jul-16				11
Aug-16				13
Sep-16				14
Oct-16				15
Nov-16				20
Dec-16				18
Jan-17				20
Feb-17				19
Mar-17				15
Apr-17				15
May-17				18
Jun-17				12
<b>TOTALS FOR SFY17</b>				

	IHS Waitlist (1)			Ending WL
	Begin WL	OFF (-)	NEW (+)	
				78
				83
				85
				88
				86
				89
				94
				83
				80
				78
				76
				76
<b>TOTALS FOR SFY17</b>				

Jul-17	12	(1)	1	12
Aug-17	12	(5)	2	9
Sep-17				
Oct-17				
Nov-17				
Dec-17				
Jan-18				
Feb-18				
Mar-18				
Apr-18				
May-18				
Jun-18				
<b>TOTALS FOR SFY18</b>	12	(6)	3	9

	76	(23)	4	57
	57	(10)	15	62
<b>TOTALS FOR SFY18</b>	76	(33)	19	62

**Data Sources:** Registry

(1) For SFY17 BDS did not track the "off" and "new" for ABD & HIS WL.



	A	B	C	D	E	F	G	H	I	J
1	<b>Table 12</b>									
2	<b>Department of Health and Human Services</b>									
3	<b>Operating Statistics</b>									
4	<b>Shelters &amp; Institutions</b>									
5										
6		<b>NHH</b>					<b>BHHS</b>			<b>Glenclyff</b>
7		<b>APS &amp; APC Census</b>	<b>APS &amp; APC Admissions</b>	<b>APS Waiting List</b>	<b>APC Waiting List</b>	<b>THS Census</b>	<b>All Shelters</b>		<b>% of</b>	<b>GH Census</b>
8		<b>Actual</b>	<b>Actual</b>	<b>Actual</b>	<b>Actual</b>	<b>Actual</b>	<b>Capacity</b>	<b>Actual</b>	<b>Capacity</b>	<b>Actual</b>
9				<b>Adult</b>	<b>Adolescent</b>					
82	Jul-15	148	169	13	1	n/a	14,694	11,628	79%	112
83	Aug-15	150	152	20	1	n/a	14,694	12,229	83%	115
84	Sep-15	151	162	17	5	n/a	14,220	11,861	83%	116
85	Oct-15	146	154	19	6	n/a	14,694	12,452	85%	116
86	Nov-15	144	163	18	5	n/a	14,220	12,684	89%	113
87	Dec-15	152	165	24	7	n/a	14,694	12,758	87%	114
88	Jan-16	153	133	28	5	n/a	14,694	12,351	84%	112
89	Feb-16	153	137	31	7	n/a	13,746	12,160	88%	113
90	Mar-16	156	191	22	5	n/a	14,694	11,224	76%	113
91	Apr-16	156	168	31	6	n/a	14,220	12,805	90%	113
92	May-16	154	185	26	11	n/a	14,694	11,270	77%	114
93	Jun-16	153	151	34	5	n/a	14,220	12,622	89%	114
94	Jul-16	161	165	24	3	n/a	14,694	13,483	92%	114
95	Aug-16	163	161	35	2	n/a	14,694	13,497	92%	115
96	Sep-16	154	180	36	5	n/a	14,220	12,950	91%	113
97	Oct-16	158	168	32	5	n/a	14,694	14,068	96%	111
98	Nov-16	155	140	39	3	n/a	14,220	13,898	98%	111
99	Dec-16	155	121	43	5	n/a	14,415	15,576	108%	108
100	Jan-17	163	141	39	5	n/a	14,415	15,460	107%	104
101	Feb-17	162	131	45	5	n/a	13,485	14,378	107%	102
102	Mar-17	162	136	46	4	n/a	14,415	14,686	102%	103
103	Apr-17	163	154	25	5	n/a	13,950	14,973	107%	105
104	May-17	163	144	28	15	n/a	14,415	15,113	105%	107
105	Jun-17	161	133	30	6	n/a	15,510	14,108	91%	107
106	Jul-17	155	116	49	4	n/a	15,510	15,344	99%	107
107	Aug-17	156	103	65	4	n/a	15,510	14,431	93%	107
108	Sep-17									
109	Oct-17									
110	Nov-17									
111	Dec-17									
112	Jan-18									
113	Feb-18									
114	Mar-18									
115	Apr-18									
116	May-18									
117	Jun-18									
118	<b>YEAR-TO-DATE AVERAGE</b>									
123	SFY15	148	167	21	5	n/a	14,129	12,730	89.9%	116
124	SFY16	151	161	24	5	n/a	14,457	12,170	84.2%	114
125	SFY17	160	148	35	5	n/a	14,427	14,349	99.7%	108
126	SFY18	156	110	57	4	n/a	15,510	14,888	100.2%	107
127										
128	<b>Source of Data</b>									
129	<b>Column</b>									
130	<b>B</b>	Daily in-house midnight census averaged per month*								
131	<b>C</b>	Daily census report of admissions totalled per month								
132	<b>D</b>	Daily Average wait list for adults								
133	<b>E</b>	Daily average wait list for adolescents								
134	<b>F</b>	Daily Average census in Transitional Housing (privatized 12/2011)								
135	<b>G</b>	Total number of individual bednights available in emergency shelters								
136	<b>H</b>	Total number of individual bednights utilized in emergency shelters								
137	<b>I</b>	Percentage of individual bednights utilized during month								
138	<b>J</b>	Daily in-house midnight census averaged per month								
139										
140		* July 2014 average Census no longer reflects Pts on Leave								



	MH, DHHS	B	C	D	E	F	G	H	K	L	M	N	O	P	Q	R	S											
1	Table 14																											
2	Department of Health and Human Services																											
3	Caseloads Versus Prior Year & Prior Month																											
4																												
5	Unduplicated Persons				Medicaid Persons				Long Term Care-Seniors				FANF Persons				APTID Persons				SNAP Persons							
6	Actual	Vs PY	Vs Pmo	Actual	Vs PY	Vs Pmo	Actual	Vs PY	Vs Pmo	Actual	Vs PY	Vs Pmo	Actual	Vs PY	Vs Pmo	Actual	Vs PY	Vs Pmo	Actual	Vs PY	Vs Pmo	Actual	Vs PY	Vs Pmo	Actual	Vs PY	Vs Pmo	
92	Jul-15	197,379	20.4%	0.6%	181,192	29.5%	0.7%	7,045	-4.0%	-0.9%	6,120	-13.6%	-0.3%	7,513	-2.9%	-0.2%	104,705	-4.2%	-0.6%									
93	Aug-15	197,305	15.2%	0.0%	181,115	20.1%	0.0%	6,949	-2.0%	-1.4%	5,934	-13.6%	-3.0%	7,438	-3.7%	-1.0%	103,544	-4.8%	-1.1%									
94	Sep-15	198,157	12.5%	0.4%	182,017	16.0%	0.5%	7,042	-0.6%	1.3%	5,764	-14.8%	-2.9%	7,343	-4.4%	-1.3%	102,869	-5.1%	-0.7%									
95	Oct-15	198,265	10.8%	0.1%	182,225	13.7%	0.1%	7,056	-2.6%	0.2%	5,688	-15.2%	-1.3%	7,307	-4.6%	-0.5%	101,917	-5.9%	-0.9%									
96	Nov-15	198,716	9.9%	0.2%	182,889	12.3%	0.4%	7,047	-1.6%	-0.1%	5,583	-16.7%	-1.8%	7,227	-5.0%	-1.1%	100,525	-6.2%	-1.4%									
97	Dec-15	201,743	8.0%	1.5%	185,957	9.8%	1.7%	7,191	0.1%	2.0%	6,660	0.0%	19.3%	7,532	0.0%	4.2%	107,900	0.0%	7.3%									
98	Jan-16	202,248	7.2%	0.3%	186,599	8.7%	0.3%	7,114	1.7%	-1.1%	5,435	-17.9%	-18.4%	7,081	-6.0%	-6.0%	99,978	-7.4%	-7.3%									
99	Feb-16	203,485	6.0%	0.6%	187,954	7.2%	0.7%	7,225	2.8%	1.6%	5,307	-18.9%	-2.4%	7,117	-5.6%	0.5%	99,486	-7.2%	-0.5%									
100	Mar-16	203,739	5.1%	0.1%	188,445	6.5%	0.3%	7,231	1.7%	0.1%	5,183	-18.2%	-2.3%	7,033	-6.7%	-1.2%	99,543	-7.4%	0.1%									
101	Apr-16	202,526	3.7%	-0.6%	187,335	4.8%	-0.6%	7,229	0.0%	0.0%	5,159	-19.0%	-0.5%	6,972	-8.2%	-0.9%	98,453	-8.2%	-1.1%									
102	May-16	202,025	3.8%	-0.2%	186,738	4.8%	-0.3%	7,103	-0.9%	-1.7%	5,068	-18.0%	-1.8%	6,933	-8.3%	-0.6%	97,610	-8.0%	-0.9%									
103	Jun-16	202,097	3.0%	0.0%	186,895	3.9%	0.1%	7,105	-0.1%	0.0%	5,107	-16.8%	0.8%	6,916	-8.1%	-0.2%	96,872	-8.0%	-0.8%									
104	Jul-16	201,132	1.9%	-0.5%	185,718	2.5%	-0.6%	7,100	0.8%	-0.1%	4,954	-19.1%	-3.0%	6,875	-8.5%	-0.6%	95,956	-8.4%	-0.9%									
105	Aug-16	201,001	1.9%	-0.1%	185,744	2.6%	0.0%	7,166	3.1%	0.9%	5,012	-15.5%	1.2%	6,884	-7.4%	0.1%	95,575	-7.7%	-0.4%									
106	Sep-16	202,260	2.1%	0.6%	186,933	2.7%	0.6%	7,035	-0.1%	-1.8%	4,965	-13.9%	-0.9%	6,837	-6.9%	-0.7%	95,421	-7.2%	-0.2%									
107	Oct-16	201,922	1.8%	-0.2%	186,538	2.4%	-0.2%	6,969	-1.2%	-0.9%	4,938	-13.2%	-0.5%	6,767	-7.4%	-1.0%	94,873	-6.9%	-0.6%									
108	Nov-16	201,720	1.5%	-0.1%	186,383	1.9%	-0.1%	7,032	-0.2%	0.9%	4,972	-10.9%	0.7%	6,799	-5.9%	0.5%	94,563	-5.9%	-0.3%									
109	Dec-16	202,524	0.4%	0.4%	187,110	0.6%	0.4%	7,000	-2.7%	-0.5%	4,999	-24.9%	0.5%	6,732	-10.6%	-1.0%	94,191	-12.7%	-0.4%									
110	Jan-17	202,563	0.2%	0.0%	187,222	0.3%	0.1%	6,968	-2.1%	-0.5%	5,109	-6.0%	2.2%	6,690	-5.5%	-0.6%	93,856	-6.1%	-0.4%									
111	Feb-17	202,263	-0.6%	-0.1%	186,987	-0.5%	-0.1%	7,015	-2.9%	0.7%	5,159	-2.8%	1.0%	6,719	-5.6%	0.4%	93,303	-6.2%	-0.6%									
112	Mar-17	202,182	-0.8%	0.0%	186,928	-0.8%	0.0%	7,128	-1.4%	1.6%	5,011	-3.3%	-2.9%	6,698	-4.8%	-0.3%	93,050	-6.5%	-0.3%									
113	Apr-17	201,081	-0.7%	-0.5%	186,033	-0.7%	-0.5%	7,206	-0.3%	1.1%	4,917	-4.7%	-1.9%	6,661	-4.5%	-0.6%	92,386	-6.2%	-0.7%									
114	May-17	200,580	-0.7%	-0.2%	185,612	-0.6%	-0.2%	7,409	4.3%	2.8%	4,948	-2.4%	0.6%	6,706	-3.3%	0.7%	92,072	-5.7%	-0.3%									
115	Jun-17	200,542	-0.8%	0.0%	185,367	-0.8%	-0.1%	7,480	5.3%	1.0%	4,972	-2.6%	0.5%	6,655	-3.8%	-0.8%	91,633	-5.4%	-0.5%									
116	Jul-17	199,295	-0.9%	-0.6%	184,234	-0.8%	-0.6%	7,395	4.2%	-1.1%	4,983	0.6%	0.2%	6,565	-4.5%	-1.4%	90,522	-5.7%	-1.2%									
117	Aug-17	199,918	-0.5%	0.3%	184,865	-0.5%	0.3%	7,414	3.5%	0.3%	5,439	8.5%	9.2%	6,563	-4.7%	0.0%	90,231	-5.6%	-0.3%									
118	Sep-17																											
119	Oct-17																											
120	Nov-17																											
121	Dec-17																											
122	Jan-18																											
123	Feb-18																											
124	Mar-18																											
125	Apr-18																											
126	May-18																											
127	Jun-18																											
128																												
129																												
130	SFY14	155,707	0.0%		132,385	2.1%		7,228	0.4%		7,449	-12.3%		7,835	-3.7%		113,331	-3.9%										
135	SFY15	184,891	18.7%		166,736	25.9%		7,145	-1.2%		6,582	-11.6%		7,603	-3.0%		107,602	-5.1%										
136	SFY16	200,640	8.5%		184,947	10.9%		7,111	-0.5%		5,584	-15.2%		7,201	-5.3%		101,117	-6.0%										
137	SFY17	201,649	0.5%		186,381	0.8%		7,126	0.2%		4,996	-10.5%		6,752	-6.2%		93,907	-7.1%										
138	SFY18-YTD	199,607	-1.0%		184,550	-1.0%		7,405	3.9%		5,211	4.3%		6,564	-2.8%		90,377	-3.8%										

ANNUAL AVERAGES

**Table 15**  
**Department of Health and Human Services**  
**Operating Statistics**  
**SUD Financial Activity - SUMMARY**  
**SFY 17 Contracts Issued and Spent as of 8/31/17**

	FINAL SFY17			SFY18		
	As of June 30, 2017			as of 8/31/17		
	Total Amount	Actual Provider Contract Spent	Provider Contract Funds Unspent	Carry Forward Amount	Actual Provider Contract Spent	Provider Contract Funds Unspent
<b><u>GOVERNOR'S COMMISSION</u></b>						
Appropriation	5,906,526					
Balance Forward from 6/30/16 (available non-encumbrance)	1,996,346					
Balance Available from Prior Year Liquidations	773,920					
<b>TOTAL AVAILABLE</b>	<b>8,676,792</b>					
<b>Amount Encumbered for SFY17 Contracts</b>	<b>5,433,124</b>	<b>(3,792,929)</b>	<b>1,640,195</b>	<b>\$ 1,640,195</b>	<b>\$ (363,409)</b>	<b>\$ 1,276,786</b>
Pending Commitments & Contracts	1,119,581					
Pending Commitment for SYSC SUD 36 bed inpatient residential facility renovation per HB 2 (HB 517:174)	2,000,000					
<b>TOTAL COMMITTED AND EXPECTED to be Committed</b>	<b>8,552,705</b>					
<b>AMOUNT UNALLOCATED</b>	<b>124,087</b>					
<b><u>CLINICAL / TREATMENT</u></b>						
Appropriation for SFY17	11,507,350					
Balance Forward from 6/30/16 (available non-encumbrance)	2,673,853					
Balance Available from Prior Year Liquidations	2,915,072					
<b>TOTAL AVAILABLE</b>	<b>17,096,275</b>					
<b>Amount Encumbered for SFY17 Contracts</b>	<b>16,731,152</b>	<b>(10,973,458)</b>	<b>5,757,694</b>	<b>5,757,694</b>	<b>(2,056,409)</b>	<b>3,701,285</b>
<b>AMOUNT UNALLOCATED</b>	<b>365,123</b>					
<b><u>PREVENTION</u></b>						
Appropriation	3,069,350					
Balance Forward from 6/30/16 (available non-encumbrance)	444,577					
Balance Available from Prior Year Liquidations	565,706					
<b>TOTAL AVAILABLE</b>	<b>4,079,633</b>					
<b>Amount Encumbered for SFY17 Contracts</b>	<b>3,613,180</b>	<b>(2,659,836)</b>	<b>953,344</b>	<b>953,344</b>	<b>(416,014)</b>	<b>537,330</b>
<b>AMOUNT UNALLOCATED</b>	<b>386,334</b>					

NOTE (1) as of 8/31/17 June Dates of Service not yet completely billed or paid, therefore the "Provider Contract Funds Unspent" may still be reduced in subsequent months once all June bills are received and paid.

Table 15 - a

Department of Health and Human Services

Operating Statistics

SUD Financial Activity - DETAIL BY CONTRACT GOV. COMMISSION FUNDS

SFY 17 Contracts Issued and Spent as of 8/31/17

SFY17 Contracts

Approval	Name	Gov Comm Encumbered Funds in SFY17 Total	Gov Comm Expended to Date during SFY17 (as of 6/30/17)	Gov Comm Remaining Balance FINAL SFY 17 (as of 6/30/17)	Spent in SFY18 thru 8/31/17	Remaining Balance 8/31/17
G&C 12/16/15 #11	DOC	\$ 25,000	\$ 10,227	\$ 14,773	\$ -	\$ 14,773
G&C 6/24/15 #22	Geovision	\$ 13,550	\$ 8,375	\$ 5,175	\$ 1,541	\$ 3,633
G&C 6/24/15 #28	NH Interscholastic	\$ 250,000	\$ 148,335	\$ 101,665	\$ 101,665	\$ -
Dec 16, 2015 #28; Aug 24 #16B	JSI	\$ 561,747	\$ 469,624	\$ 92,123	\$ 31,893	\$ 60,229
Mar 9 #22	Southwestern	\$ 125,000	\$ 115,989	\$ 9,011	\$ -	\$ 9,011
Mar 23 #6; June 7 #19A	SUD Tx	\$ 1,802,640	\$ 1,627,867	\$ 174,773	\$ 112,537	\$ 62,236
Mar 23 #18	CADY	\$ 20,000	\$ 20,000	\$ -	\$ -	\$ -
Mar 23 #19	Juv Court Div	\$ 110,200	\$ 97,864	\$ 12,336	\$ 12,336	\$ -
Apr 6 #9	NCADD(Serenity)Gr Manch	\$ 130,000	\$ 130,000	\$ -	\$ -	\$ -
Apr 6 #9A	Governor's Advisor	\$ 123,136	\$ 122,083	\$ 1,053	\$ 1,053	\$ -
June 1 #12	Goodwin Community Health	\$ 61,677	\$ 16,396	\$ 45,281	\$ 12,174	\$ 33,107
June 1 #13; June 7 #20	Harbor Homes	\$ 815,403	\$ 698,403	\$ 116,000	\$ -	\$ 116,000
Sept 21 Late Item A	New Futures	\$ 103,500	\$ 82,664	\$ 20,836	\$ 10,716	\$ 10,120
Nov 18 #18	Juv Court Div (SB533)	\$ 258,424	\$ 222,060	\$ 36,364	\$ 36,364	\$ -
Dec 21 #24A	Bi-State -MAT	\$ 375,000	\$ 22,041	\$ 352,959	\$ 10,382	\$ 342,577
April 19 #14B	Harbor Homes BDAS \$500K	\$ 500,000	\$ -	\$ 500,000	\$ -	\$ 500,000
June 21 Late item B	Prevention Direct Svs	\$ 157,847	\$ -	\$ 157,847	\$ 32,748	\$ 125,099
<b>Total Activity to Date- Gov Comm</b>		<b>\$ 5,433,124</b>	<b>\$ 3,792,929</b>	<b>\$ 1,640,195</b>	<b>\$ 363,409</b>	<b>\$ 1,276,786</b>

Ties to Summary Table 15

**Table 15 - a**  
**Department of Health and Human Services**  
**Operating Statistics**  
**SUD Financial Activity - DETAIL BY CONTRACT - CLINICAL SERVICE FUNDS**  
**SFY 17 Contracts Issued and Spent as of 8/31/17**

		SFY17 Contracts						
Approval	Name	Treatment Contracted Funds in SFY17 Total	Treatment Encumbered Funds in SFY17 Total	Treatment Expended during SFY17 of 6/30/17	Treatment Remaining Balance of 6/30/17	Spent in SFY18 thru 8/31/17	Remaining Balance 8/31/17	
G&C 6/24/15 #58	SBIRT Contracts	\$ 110,724	\$ 82,515	\$ 13,521	\$ 68,994	\$ 14,502	\$ 54,481	
Dec 16, 2015 #28; June 29, 2016 #25A	JSI	\$ 95,500	\$ 95,500	\$ 65,362	\$ 30,138	\$ 5,072	\$ 25,066	
Numerous	RPHN	\$ 560,246	\$ 556,954	\$ 393,786	\$ 163,168	\$ 84,343	\$ 78,825	
Jan 27 #6	MOA- Dept of Safety	\$ 17,210	\$ 17,210	\$ 765	\$ -	\$ -	\$ -	
Mar 9 #22	Southwestern	\$ 24,300	\$ 24,300	\$ -	\$ 23,535	\$ -	\$ 23,535	
Mar 23 #6; June 7, 2017 #19A	SUD Tx	\$ 7,812,369	\$ 6,787,369	\$ 5,303,822	\$ 1,483,547	\$ 990,730	\$ 492,817	
Mar 23 #2B	Narcan	\$ 420,300	\$ 420,300	\$ 420,300	\$ -	\$ -	\$ -	
Apr 6 #9	NCADD(Serenity)Gr Manch	\$ 28,350	\$ 28,350	\$ 28,260	\$ 90	\$ -	\$ 90	
June 1 #12	Goodwin Community Health	\$ 329,923	\$ 279,923	\$ -	\$ 279,923	\$ -	\$ 279,923	
June 1 #13	Harbor Homes	\$ 799,327	\$ 799,327	\$ 428,364	\$ 370,962	\$ 178,945	\$ 192,018	
June 15 #11D	BiSlate WFD	\$ 134,948	\$ 134,948	\$ 55,356	\$ 79,592	\$ 12,891	\$ 66,701	
June 29 #22	SUD Tx Infrastructure	\$ 4,180,800	\$ 3,030,800	\$ 1,667,569	\$ 1,363,231	\$ 444,211	\$ 919,020	
July 13 #6B	Foundation for Healthy Comm	\$ 1,500,000	\$ 1,500,000	\$ 711,875	\$ 788,125	\$ 10,943	\$ 777,181	
July 13 #6C	Granite Pathways	\$ 1,200,000	\$ 1,200,000	\$ 754,559	\$ 445,441	\$ 107,490	\$ 337,950	
Aug 24 #10A	MLADC-E Davis	\$ 87,750	\$ 87,750	\$ 56,790	\$ 30,960	\$ 2,115	\$ 28,845	
Sept 21 #21A	Helping Hands	\$ 138,542	\$ 138,542	\$ 124,964	\$ 13,578	\$ 805	\$ 12,773	
Oct 5 #11	MLADC-S DeGenaro	\$ 87,750	\$ 87,750	\$ 59,085	\$ 28,665	\$ 1,800	\$ 26,865	
Oct 5 #12	MLADC-T Pillsbury	\$ 87,750	\$ 87,750	\$ 57,375	\$ 30,375	\$ 2,475	\$ 27,900	
Oct 26 #24	Hope for NH(Berlin/Franklin) (GF)	\$ 100,000	\$ 100,000	\$ 100,000	\$ -	\$ -	\$ -	
Oct 26 #26	FEL	\$ 690,225	\$ 690,225	\$ 221,332	\$ 468,893	\$ 118,993	\$ 349,900	
Oct 26 Late Item A	PRSS (SB433) (GF)	\$ 500,000	\$ 500,000	\$ 430,404	\$ 69,596	\$ 63,693	\$ 5,904	
Nov 18 #13	MLADC-R Sayres	\$ 87,750	\$ 21,690	\$ 21,690	\$ -	\$ -	\$ -	
Mar 8 #18A	Governor's Advisor (GF)	\$ 56,700	\$ 56,700	\$ 41,069	\$ 15,631	\$ 15,631	\$ -	
	Copier Contract	\$ -	\$ 3,250	\$ -	\$ 3,250	\$ 1,769	\$ 1,481	
	<b>Total SFY17 Activity to Date</b>	<b>\$ 19,050,463</b>	<b>\$ 16,731,152</b>	<b>\$ 10,973,458</b>	<b>\$ 5,757,694</b>	<b>\$ 2,056,409</b>	<b>\$ 3,701,285</b>	

Ties to Summary Table 15

**Table 15 - a**  
**Department of Health and Human Services**  
**Operating Statistics**  
**SUD Financial Activity - DETAIL BY CONTRACT - PREVENTION SERVICE FUNDS**  
**SFY 17 Contracts Issued and Spent as of 8/31/17**

Approval	Name	SFY17 Contracts				Spent in SFY18 thru 8/31/17	Remaining Balance 8/31/17
		Prevention Encumbered Funds in SFY17 Total	Prevention Expended to Date during SFY17 (as of 6/30/17)	Remaining Balance FINAL SFY 17 (as of 6/30/17)	Spent in SFY18 thru 8/31/17		
June 24, 2015 #22	Geovision	\$ 13,550	\$ 8,375	\$ 5,175	\$ 1,541	\$ 3,633	
Mar 23, 2016 #17	Liq Comm	\$ 50,000	\$ 2,507	\$ 47,493		\$ 47,493	
Oct 7, 2015 #20; Sept 21, 2016 #21; Nov 18, 2016 #20	SAP	\$ 686,754	\$ 507,811	\$ 178,943	\$ 83,105	\$ 95,838	
Oct 7, 2015 #20A	NH Cert Board	\$ 32,000	\$ 24,081	\$ 7,919		\$ 7,919	
June 24, 2015 #19	Seacoast MH -REAP	\$ 63,000	\$ 63,000	\$ -		\$ -	
Dec 16, 2015 #28; June 29, 2016 #25A	JSI	\$ 988,500	\$ 810,315	\$ 178,185	\$ 58,964	\$ 119,221	
Numerous	RPHN	\$ 1,779,376	\$ 1,243,747	\$ 535,629	\$ 272,403	\$ 263,226	
<b>Total Activity to Date- Prevention</b>		<b>\$ 3,613,180</b>	<b>\$ 2,659,836</b>	<b>\$ 953,344</b>	<b>\$ 416,014</b>	<b>\$ 537,330</b>	

Ties to Summary Table 15

**Table 16  
Department of Health and Human Services  
Operating Statistics  
SUD Caseloads**

**Unique Clients Receiving Any SUD Services by Service Month**

<b>Paid Year Month</b>	<b>Unique Clients With Paid Claims</b>	
	<b>MEDICAID</b>	<b>Non- Medicaid SUD FUNDED</b>
7/1/2016	3,361	unavailable
8/1/2016	3,305	unavailable
9/1/2016	3,405	unavailable
10/1/2016	3,651	unavailable
11/1/2016	3,777	unavailable
12/1/2016	3,891	unavailable
1/1/2017	3,908	unavailable
2/1/2017	4,047	unavailable
3/1/2017	4,048	unavailable
4/1/2017	4,090	unavailable
5/1/2017	4,245	unavailable
6/1/2017	4,080	unavailable
<b>SFY 17 YTD COUNTS UNDUPLICATED</b>	<b>8,934</b>	<b>3,062</b>

<b>Paid Year Month</b>	<b>Unique Clients With Paid Claims</b>	
	<b>MEDICAID</b>	<b>Non- Medicaid SUD FUNDED</b>
7/1/2017	4,215	NA
8/1/2017	na	NA
9/1/2017		
10/1/2017		
11/1/2017		
12/1/2017		
1/1/2018		
2/1/2018		
3/1/2018		
5/1/2018		
6/1/2018		
<b>SFY 18 YTD COUNTS UNDUPLICATED</b>		

**MEDICAID SOURCE**

*Source: NH MMIS Ad Hoc paid fee for service claims and paid managed care ei*

*Note: SUD Services include opioid treatment program, medication assisted treatment, pharmacy paid naloxone, evaluation and management physician/clinic services, inpatient hospitalization, screening, assessment & intervention, outpatient counseling, intensive outpatient & partial hospitalization, residential treatment services, withdrawal management, and recovery support*

*Prepared by DHHS - OQAI - DA Andrew*

**Non -medicaid SUD**

*WITS: BDAS NH Web Information Technology System (WITS) SFY 2017*

*Prepared by Mike Rogers, BDAS*



This page intentionally left blank

---