

DHHS Division for Behavioral Health

House Finance Division III

March 2019

Katja Fox, Director



Agenda

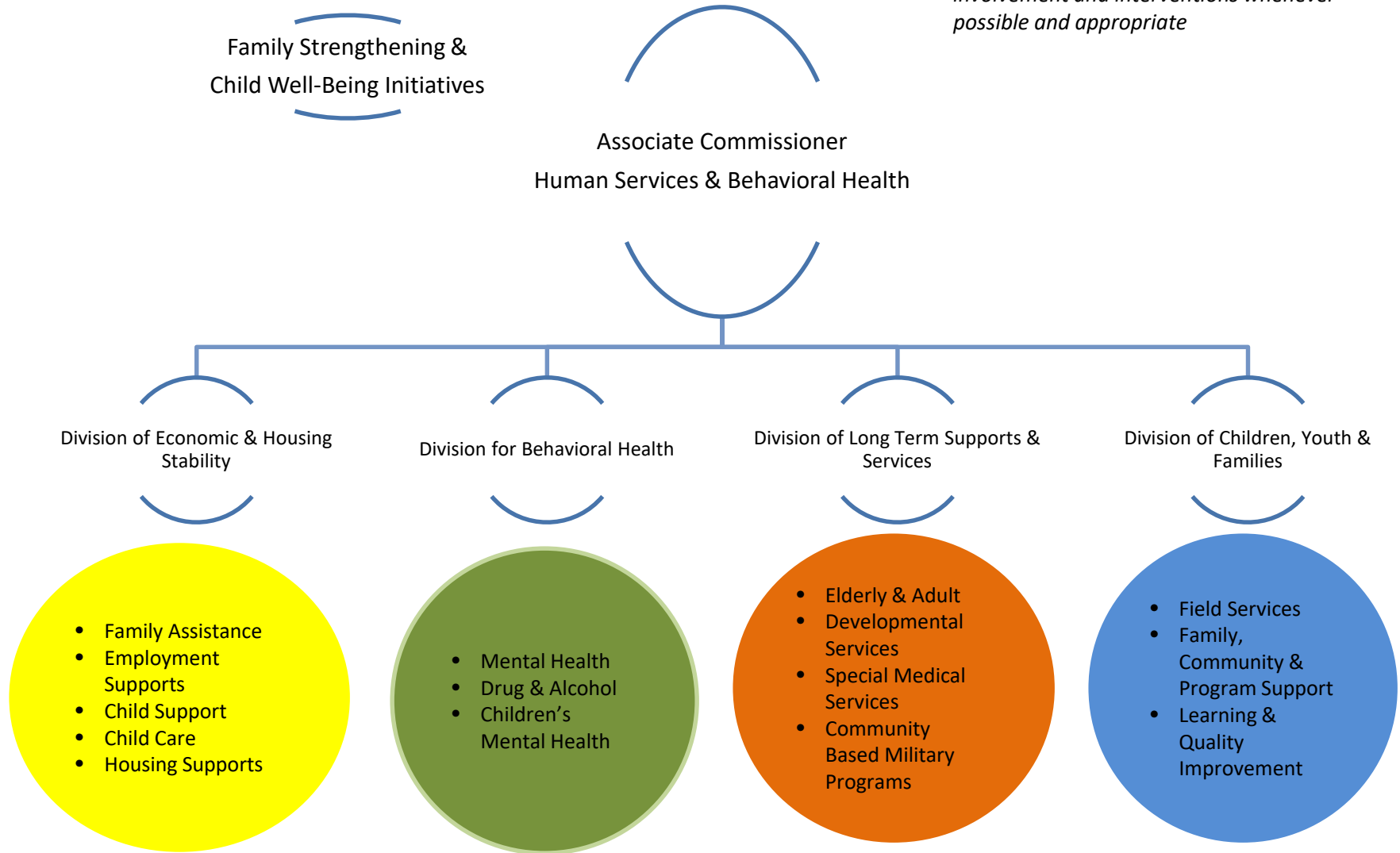
2

- ▶ **Division Overview**
- ▶ **Bureau of Drug & Alcohol Services**
- ▶ **Bureau of Mental Health Services**
- ▶ **Bureau of Children's Behavioral Health**
- ▶ **Accomplishments**
- ▶ **Key Challenges**



Operational Area: HS & BH

**From left to right - Emphasis on rapid and holistic engagement with integrated, targeted supports and services to prevent deeper involvement and interventions whenever possible and appropriate*



Overview - Division for Behavioral Health

4

- ▶ The Division was created in March 2016 to unify and integrate behavioral health services within the Department
- ▶ The Division includes:
 - ▶ Bureau of Drug and Alcohol Services
 - ▶ Bureau of Mental Health Services
 - ▶ Bureau for Children's Behavioral Health
 - ▶ Policy Section



Bureau of Drug and Alcohol Services

Division for Behavioral Health



Overview – Bureau of Drug and Alcohol Services

6

Initiatives and services include:

- Population Level Strategies
 - Prevention Direct Services
 - Clinical Services
 - Recovery Services
-
- **Client Eligibility:** Individuals with a substance use disorder between 138%-400% of Federal Poverty Level (sliding fee) who are uninsured or under insured.
 - The Bureau serves as a subject matter resource for internal and external stakeholders.
 - Governor's Commission on Alcohol and Other Drugs (RSA 12-J)
 - Executive Director-manages and oversees Commission's finances/contracts



BDAS-Services Provided

Prevention

- Regional Public Health Network-DPH
- Public Awareness & Information (Lock It Up/Anyone Anytime Campaign)
 - Juvenile Diversion/MLADCs at DCYF
 - Student Assistance Programs (Education)
 - Early childhood prevention programming (DCYF)

Treatment

- Impaired Driver Programming (regulatory)
- Crisis Intervention Services
- Residential, Outpatient, Intensive Outpatient, Specialty Services (Pregnant Women, Veterans)
- Withdrawal Management-Medication Assisted Treatment/Suboxone/Vivitrol (Corrections) (Pregnant Women)
- Opioid Treatment Programs (OTP) – regulatory

Recovery

- 12 Recovery Centers, Family Support Groups, Recovery Supports for Pregnant Women
- Naloxone distribution-Statewide and Corrections



BDAS-Delivery System

8

- 13 Regional Public Health Networks
- Public Awareness & Information-Anyone, Anytime
- School and Community Based Substance Misuse Prevention Services
- Crisis Intervention Services: Doorway-NH, hospital emergency rooms, naloxone distribution
- Specialty Substance Use Disorders (SUD) Treatment Service Providers
 - Parenting and pregnant women, veterans, adolescents
- Opioid Treatment Programs (Methadone Clinics) – Regulatory Oversight
- Peer Recovery Support Services
- Training & Technical Assistance-Contractors



BDAS-Caseloads

| Year | Prevention Services | Gov. Commission | Clinical | Total |
|--------------|---------------------|-----------------|----------|--------|
| 2012 | 1,717 | 2,190 | 1,671 | 5,578 |
| 2013 | 1,748 | 1,788 | 9,500 | 13,036 |
| 2014 | 8,926 | 2,552 | 9,872 | 21,350 |
| 2015 | 14,914 | 4,305 | 9,238 | 28,457 |
| 2016 | 11,360 | 15,478 | 10,413 | 37,251 |
| 2017 | 17,515 | 15,478 | 10,413 | 43,406 |
| 2018* | 23,964 | *39,883 | 13,951 | 77,798 |
| *Preliminary | | | | |

* NH Governors Commission report is due March 2019. Numbers will be updated end of March 2019.



Bureau of Mental Health Services

Division for Behavioral Health

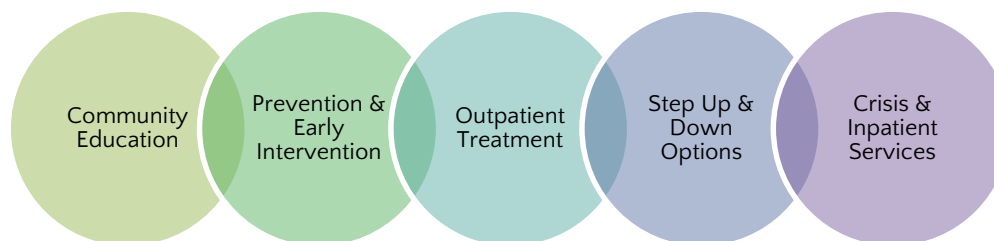


Overview— Bureau of Mental Health Services (BMHS)

11

The BMHS is New Hampshire's single state mental health authority that seeks to promote respect, recovery, and full community inclusion for adults who experience a mental illness.

- ▶ The BMHS oversees grants and manages 40+ contracts with:
 - ▶ Mental health family and peer support agencies
 - ▶ 10 community mental health programs
 - ▶ 2 mental health providers
 - ▶ 4 Designated Receiving Facilities
- ▶ The BMHS provides overall guidance, technical assistance, training and monitoring for mental health services statewide to ensure that quality services are comprehensive and evidenced-based.



Bureau of Mental Health Services – Services Provided

12

Establish and support a comprehensive mental health system comprised of evidence-based services that facilitates hope, recovery, and full community inclusion.

Treatment and Support Services

Services include:

- Community Mental Health Centers Services (comprehensive outpatient services)
- Emergency Services, including Mobile Crisis Response Teams and Apartments
- First Episode Psychosis
- ProHealth Integrated Healthcare for Youth, Ages 16-35
- Transitional and Supported Housing Services
- Housing Bridge Subsidy and Project Rental Assistance 811
- Individual and Family Peer Support
- Designated Receiving Facilities Services
- Guardianship

State Mandates

- Community Mental Health Services- RSA 135-C
- Community Mental Health Settlement Agreement



Numbers Served – Bureau of Mental Health Services

13

- ▶ Community Mental Health Centers:
 - ▶ Severe Mental Illness SFY 2018 **6,661**
 - ▶ Severe and Persistent Mental Illness SFY 2018 **8,189**
 - ▶ Low Utilizer SFY 2018 **954**
- ▶ Peer Support Services:
 - ▶ SFY 2018 **2,838**
- ▶ Guardianship Services:
 - ▶ SFY 2018 **1,015**



Bureau for Children's Behavioral Health

Division for Behavioral Health



BCBH-Population Served/Services Provided

15

Community Mental Health

Services include: Assessment and diagnostic evaluations, individual, group and family therapies, psychiatric services, medication management, case management, home and community support services.

Client Eligibility: Children with Severe Emotional Disturbance.

Care Management Entity: FAST Forward

Services include: Enhanced Care Coordination, intensive in-home services, Peer Support, Respite, Customizable Goods and Services.

Client Eligibility: Children with Severe Emotional Disturbance and who are at risk for hospital/out of home placement.

Residential Treatment

Services include: Residential Treatment for children and youth with Mental Health and/or Substance Use Disorder.

Client Eligibility: children and youth who require treatment and stabilization in a residential setting.



Delivery System

16

| Providers | Type of Provider | Delivery System |
|-------------------------------------|---------------------------------|-------------------|
| All Regions | Community Mental Health Centers | Medicaid Provider |
| NFI-North | Care Management Entity | Medicaid Provider |
| NAMI-NH | Family Peer Support | Contract |
| NH YouthMOVE | Peer Support Agency | Contract with CME |
| 12 Residential Treatment- MH | Residential treatment | Medicaid Provider |
| 1 Residential Treatment- SUD | Residential Treatment | Medicaid Provider |



Children's Behavioral Health: Key Programs/Services

17

System of Care development in NH: RSA 135- F

Expansion of the System of Care and all the components of RSA 135-F System of Care for Children's Mental Health to:

- Fill gaps in service array and delivery system- created intensive programming and a Care Management Entity
- Fill gaps in populations (early childhood) – DHHS Developed an Infant and Early Childhood MH plan
- Fill gaps in funding and funding mechanisms for effective services- 10 Year Mental Health Plan identifies gaps and strategies.
- Address workforce issues- 10 year MH plan and other IDN connected work addressing workforce capacity
- Align practices with System of Care values and principles- Infusing the values and principles in contracts and rules.
- Expand effective services and service delivery: expanding the CME and NH Wraparound and Evidenced Based Practices/treatments

FAST Forward Program

- An intensive in-home and community based program for children and youth with Severe Emotional Disturbances
- Enhanced care coordination
- Adherence to values and principles of System of Care
- Provides supportive services to child and family in addition to the MH Treatment services
- Expanding to serve children and youth involved in DCYF
- 13 Wraparound coordinators trained
- 105 families currently enrolled
- 229 children served since implementation
- Has reduced the number of hospitalizations these kids have had
- Reduced the overall Medicaid expenditures



Medicaid Benefit for Children's Mental Health

18

Medicaid benefit that allows Medicaid reimbursement for services and supports associated with FAST Forward for Children and Youth Severe Emotional Disturbances who need intensive home and community support. Benefit includes:

- Wrap around facilitation/ enhanced care coordination
- Family Peer Support
- Youth Peer Support
- In Home Respite care
- Out of home respite care
- Customizable Goods and Services



BCBH-Caseloads

| Year | Community Mental Health Centers | Care Management Entity |
|------|---------------------------------|------------------------|
| 2014 | 9,399 | N/A |
| 2015 | 10,346 | 25 |
| 2016 | 11,017 | 18 |
| 2017 | 10,882 | 41 |
| 2018 | 11,722 | 54 |



Key Accomplishments

10-Year Plan for Mental Health

Community Mental Health Agreement

Medicaid Transformation Waiver (DSRIP)

Opioid Crisis Response

Medicaid Waiver for Children's Wraparound Services



Major Challenges

Division for Behavioral Health Capacity

Systems Capacity

Provider Workforce Shortages

Restricted Funding Sources

Sustainable Funding/Providers' Stability



Division for Behavioral Health Staffing

22

| Authorized Positions SFY20 | % | Organization |
|----------------------------|-----|---|
| 4 | 11% | Division for Behavioral Health Operations |
| 18 | 47% | Bureau of Drug & Alcohol Services |
| 3 | 8% | Bureau for Children's Behavioral Health |
| 13 | 34% | Bureau of Mental Health Services |
| 38 | | Total |

1 Position unfunded in BMHS

Total does not include temporary full time grant funded positions:

BDAS – 7 positions

BCBH – 1 position

BMHS – 1 position



Accounting Units by Bureau

| Activity-Accounting Unit | Accounting Unit Title | Division | Bureau | Budget Book Page # | Budget Briefing Book Page # |
|--------------------------|----------------------------|----------|--------|--------------------|-----------------------------|
| 9200-7877 | Office of Director | DBH | | 1017 | |
| 9200-7155 | Medicaid Payments NHH & GH | DBH | | 1019 | 164 |
| 9200-8133 | Workers Compensation | DBH | | 1020 | |
| 9200-8581 | Unemployment Compensation | DBH | | 1021 | |
| 9205-2070 | Program Operations | DBH | BDAS | 1022 | 165 |
| 9205-2559 | Opioid STR Grant | DBH | BDAS | 1023 | 167 |



Accounting Units by Bureau

| Activity-Accounting Unit | Accounting Unit Title | Division | Bureau | Budget Book Page # | Budget Briefing Book Page # |
|--------------------------|------------------------------|----------|--------|--------------------|-----------------------------|
| 9205-3380 | Prevention Services | DBH | BDAS | 1023 | 170 |
| 9205-3382 | Governor Commission Funds | DBH | BDAS | 1024 | 173 |
| 9205-3384 | Clinical Services | DBH | BDAS | 1025 | 177 |
| 9205-3385 | Drug Forfeiture Fund | DBH | BDAS | 1026 | |
| 9205-3393 | Treatment Drug Court Grant | DBH | BDAS | 1027 | |
| 9205-3395 | PFS2 Grant | DBH | BDAS | 1028 | 180 |
| 9205-6935 | MAT Grant | DBH | BDAS | 1028 | 182 |
| 9205-7040 | State Opioid Response Grant | DBH | BDAS | 1029 | 184 |
| 9210-2052 | Children's Behavioral Health | DBH | BCBH | 1031 | |
| 9210-2053 | System of Care | DBH | BCBH | 1031 | 188 |



Accounting Units by Bureau

| Activity-Accounting Unit | Accounting Unit Title | Division | Bureau | Budget Book Page # | Budget Briefing Book Page # |
|--------------------------|--------------------------------|----------|--------|--------------------|-----------------------------|
| 9210-2059 | State Youth Treatment Planning | DBH | BCBH | 1032 | |
| 9220-2340 | ProHealth NH Grant | DBH | BMHS | 1033 | 190 |
| 9220-4113 | Consumer & Family Affairs | DBH | BMHS | 1034 | |
| 9220-4114 | Guardianship Svcs | DBH | BMHS | 1035 | 192 |
| 9220-4115 | Commitment Costs | DBH | BMHS | 1036 | |
| 9220-4116 | Interim Care Funds | DBH | BMHS | 1037 | |
| 9220-4117 | CMH Program Support | DBH | BMHS | 1037 | 193 |
| 9220-4118 | Peer Support Services | DBH | BMHS | 1038 | 197 |
| 9220-4119 | Family Mutual Support Services | DBH | BMHS | 1039 | |
| 9220-4120 | Mental Health Block Grant | DBH | BMHS | 1039 | 199 |



Accounting Units by Bureau

| Activity-Accounting Unit | Accounting Unit Title | Division | Bureau | Budget Book Page # | Budget Briefing Book Page # |
|--------------------------|-------------------------------|----------|--------|--------------------|-----------------------------|
| 9220-4121 | Mental Health Data Collection | DBH | BMHS | 1041 | |

