

# ***Bureau for Children's Behavioral Health***

**Presented to House Finance Division III  
LOB Room 210 February 24, 2017  
Katja Fox, Behavioral Health Director**



# Agenda

---

2

- ▶ **Overview Bureau for Children's Behavioral Health**
  - ▶ **Key Programs / Services**
  - ▶ **Population Served**
  - ▶ **Delivery System**
  - ▶ **Financial Summary**
  - ▶ **Accomplishments**
  - ▶ **Key Challenges**
- 



## Overview – Bureau for Children’s Behavioral Health

---

3

- ▶ Bureau was established in May, 2016
- ▶ Created to address the unique needs of children, youth and young adults who are at risk for or have mental health and/or substance misuse issues.
- ▶ Works with the Bureaus of Mental Health Services (BMHS), Drug and Alcohol Services (BDAS) and New Hampshire Hospital (NHH) to enhance the service delivery system with child, youth and young adult approaches to treatment.
- ▶ Oversees current programming that serves children and youth with behavioral health needs.
- ▶ Develops, creates and enhances programming for children and youth.



# Key Programs/Services

4

## Community Mental Health

**Services include:** Clinical assessment and diagnostic evaluations, Individual, family and group therapies, functional support services, case management and psychiatric services including medication management.  
**Client Eligibility:** Children and youth determined to have a Serious Emotional Disturbance (SED).

## FAST Forward

**Families and Systems Together (FAST) Services include:** High fidelity wraparound and care coordination, intensive in home and community based services, respite, crisis support and stabilization, family peer support, youth peer support.  
**Client Eligibility:** Children and youth who have SED, have been hospitalized and who are at risk for an out of home placement.

## Substance Abuse Treatment

**Substance abuse and Mental Health Services Administration (SAMHSA) State Youth Treatment Planning (SYTP) Planning Grant:** To create a plan to enhance the substance use/disorder treatment system with youth based approaches. Plan in development.  
**Implementation Grant:** Application pending.  
**Client Eligibility:** Children and youth who have a substance use disorder and require treatment.



# Population

	Children and youth who have Severe Emotional Disorder, served by Community Mental Health Centers	Children who have severe emotional disorder served in FAST Forward program
SFY 2016	8,191	21
SFY 2017 (projection)	8,154	46



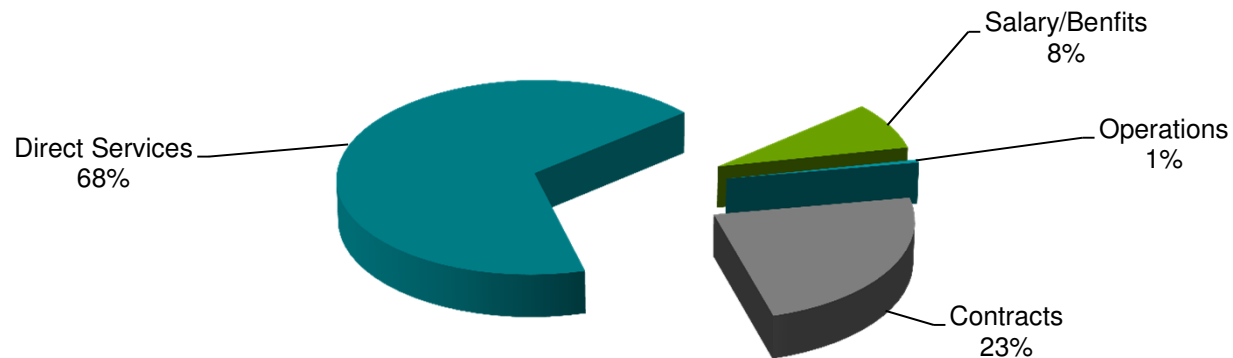
# Delivery System

Providers	Type of Provider	Delivery System
1. 10 CMHCs	Community Mental Health Centers	Medicaid Provider  * Note: funding is represented in the Medicaid budget not in Children's budget
2. NFI North (North American Family Institute)	FAST Forward Agency, non profit service provider.	Braided funding: Medicaid, grant funds and general funds
3. NH Youth Move	Youth Peer Support and Leadership	Grant funded
4. NAMI NH (National Alliance on Mental Illness)	Family Peer Support Agency	Contract with DHHS



# Major Spend – Bureau of Children’s Behavioral Health

7



Total	SFY 16 Actual	SFY 17 Adjusted Authorized	SFY 18 Governor's Budget	SFY 19 Governor's Budget
BCBH Total Funds	\$0	\$0.2	\$5.2	\$5.4
BCBH General Funds	\$0	\$0	\$2.5	\$2.5
<i>Amounts in Millions</i>				



# Major Accounting Units – General Funds

8

Major Accounting Unit	SFY16 Actual	SFY 17 Adjusted Authorized	SFY18 Governor's Request	SFY19 Governor's Request
9210-2053 System of Care	\$0	\$0	\$2.3	\$2.3

*Amounts are General Funds only and in Millions*





## Staffing – Bureau of Children’s Behavioral Health

9

Authorized Positions SFY18	Accounting Unit	Vacant
3	Children’s Behavioral Health	0
3	Total Classified	0
1	State Youth Treatment Planning (Temporary Full Time)	0



# Key Accomplishments

---

10

Internal Organization/Management

FAST Forward program  
implementation and sustainability

State Youth Treatment Planning  
initiated for youth substance abuse

Initiated requirements under new  
System of Care (RSA 135-F)



# Major Challenges

11

Provider workforce capacity

Sustainable funding for effective services

Early identification and lack of focus on prevention for children's behavioral health

Addressing the complex needs of children who have co-occurring Mental Health and Substance Abuse Disorders

