

Bureau of Developmental Services

**Presented to House Finance Division III
LOB Room 210 February 27, 2017
Chris Santaniello**



- ▶ **Overview of the Bureau of Developmental Services**
- ▶ **Key Programs / Services**
- ▶ **Population Served**
- ▶ **Delivery System**
- ▶ **Financial Summary**
- ▶ **Accomplishments**
- ▶ **Key Challenges**



Bureau of Developmental Services - Overview

3

Community Based Services Program Support:

- Primary contact for all issues and stakeholders [including individuals, families, area and subcontract agencies, cooperating agencies, local officials].
- Facilitate all regional activities, including development of services, budgets, and regional system evaluation (Redesignation).
- Monitor all regional activities, including service quality, complaint investigations, budget development, Medicaid billing, and contracts.

Clinical Services:

- Residential forensic treatment program providing supervision and services to individuals with DD/ID who are charged with felonies and found incompetent to stand trial. Individuals are remanded to BDS for care, treatment, and public safety.
- Nursing and Medication Administration under He-M1201.
- Clinical consultation and training to Area Agencies and Provider Agencies.

Finance & Medicaid Compliance:

- Annual determination of eligibility for waiver services
- Confirm approved funding and issue approximately 8,000 prior authorizations for services each year.



Bureau of Developmental Services - Overview

4

Special Medical Services:

- Title V Program for Children with Special Health Care Needs (CSHCN) who have, or are at risk for, a chronic medical condition, disability, or severe health care need.
- Provide specialty clinic services, consultation, care coordination, and financial assistance for CSHCN.

Family Support:

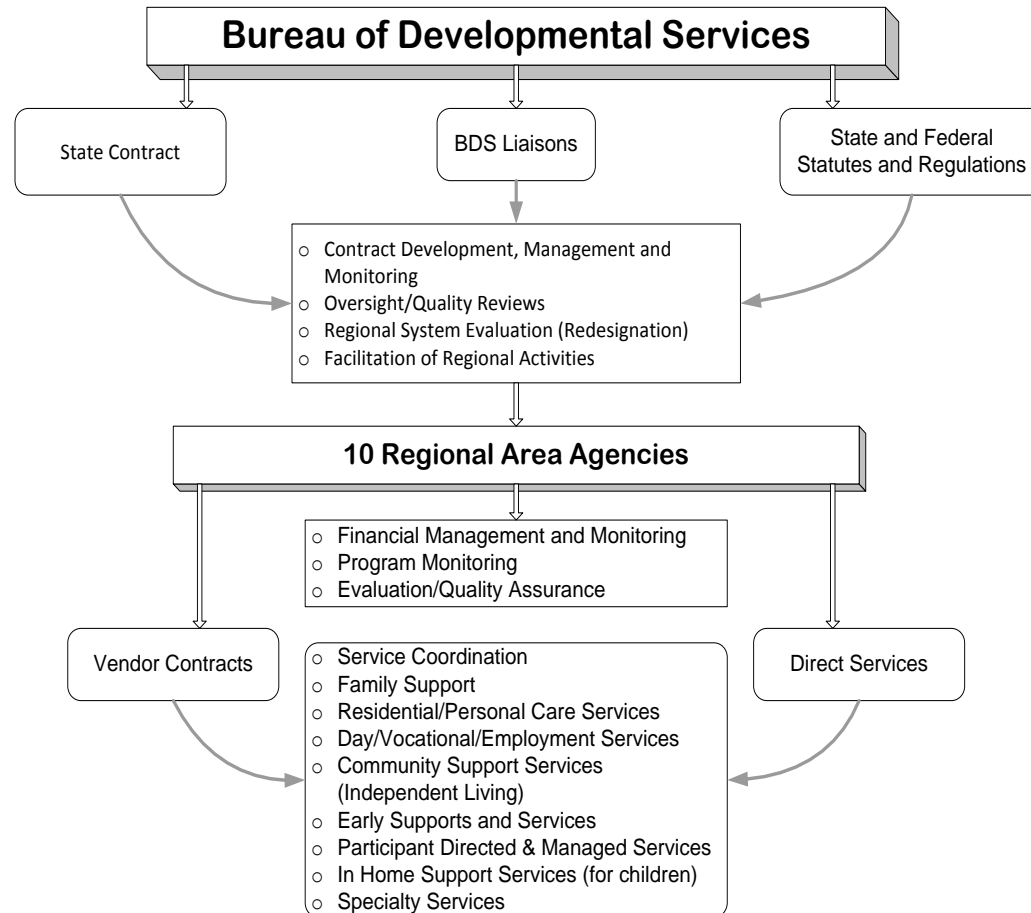
- Provide oversight & federally mandated monitoring for 3,700+ Early Supports and Services eligible children birth through age 2, under Part C of IDEA.
- Facilitate activities of the Statewide Family Support Council and monitor regional Family Support Activities.

Medicaid to Schools:

- NH school districts receive more than \$35M in federal funds to provide Medicaid covered health related services to more than 10,000 children eligible for special education who have Individual Education Plans (IEPs).



Bureau of Developmental Services



Individuals Served - Bureau of Developmental Services (BDS)

6

New Hampshire provides the majority of services with three Home and Community Based Services (HCBS) 1915 (c) waivers through the Center for Medicaid and Medicare Services (CMS).

Developmental Disabilities

Services include: Client Eligibility

- Typically require life long supports and services, can range from support during the day and/or at work up to 24/7 residential.
- He-M 503 defines eligibility- e.g., developmental disability, intellectual disability, autism, cerebral palsy.

Acquired Brain Disorder

Services include: Client Eligibility

- Typically require extensive life long supports and services, can range from support during the day and/or for work up to 24/7 residential.
- He-M 522 defines eligibility, e.g. traumatic brain injury, Huntington's disease. Require skilled nursing level of care or specialized residential services

In Home Support Services (IHS)

Services include: Client Eligibility

- Personal care services for children living at home with their families.
- Children up through the age 21, eligibility defined in He-M 524.



Individuals Served -Bureau of Developmental Services

7

BDS also provides the following services not operated through the HCBS Waivers.

Early Supports and Services (Part C of IDEA)

Services include: Client Eligibility

- Home-based model, PT, OT, Speech and Educator services.
- He-M 510 defines eligibility, for children birth through age 2, with an established condition or at risk of a developmental delay

Medicaid to Schools

Services include: Client Eligibility

- Medically related services outlined in a student's Individual Education Plan (IEP).
- Defined in He-M 1301, children who qualify for special education and have an IEP.

Family Support to Children with Chronic Health Conditions

Services include: Client Eligibility

- Family support services to aid families in the care of their children who have chronic health conditions.
- Defined in He-M 523, children who have severe and chronic health conditions e.g. asthma, diabetes, heart conditions, etc.



Individuals Served- Bureau of Developmental Services

8

Forensic Services

Services include: Client Eligibility

- 24/7 services in a secure setting, with an ultimate goal to a less-restrictive setting.
- Eligibility defined in He-M 171-B. Individuals who have DD/ID, are charged with felonies, and found incompetent to stand trial; and/or Individuals who, through clinical risk assessment, are found to be at risk to self and/or the community



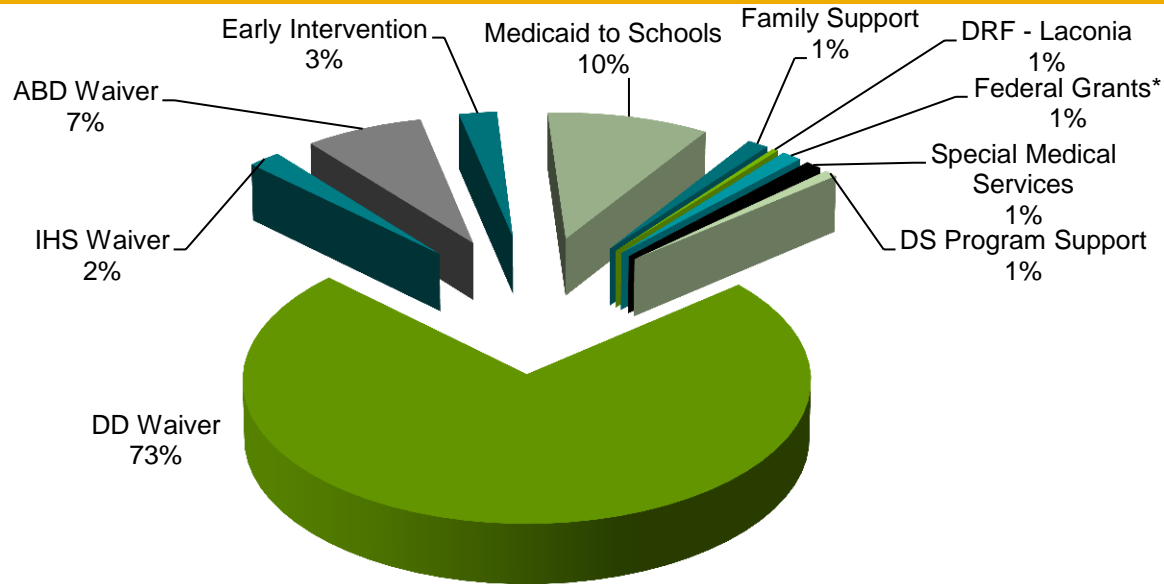
Delivery System

Providers	Type of Provider	Delivery System
<ul style="list-style-type: none"> • Are organized through a regional system of 10 non-profit 501 (c) (3) organizations called Area Agencies (AA). • Area Agencies act as lead agencies to plan, provide, and oversee services and serve as the Organized Health Care Delivery System. 	<ul style="list-style-type: none"> • Area Agencies • Exercise local control; governed by a local Board of Directors • One-third of board membership must be consumers of BDS services. 	<ul style="list-style-type: none"> • BDS has a public/private partnership with local, non-profit agencies • AAs provide services directly and/or through a subcontract service provision • All services are community based • In 1991, NH was the first state in the nation to close it's institution for people with developmental disabilities. • Only 13 other states and the District of Columbia do not have an institution for individuals with developmental disabilities.



Major Spend – Division of Developmental Services

10



Total	SFY 16 Actual	SFY 17 Adjusted Authorized	SFY 18 Agency Request	SFY 18 Governor's Request	SFY 19 Agency Request	SFY 19 Governor's Request
Total Funds	\$298.5	\$324.6	\$365.5	\$343.5	\$377.2	\$355.2
General Funds	\$138.3	\$147.8	\$169.2	\$157.9	\$175.1	\$163.8
<i>Amounts in Millions</i>						

*Includes Social Services Block Grant, Part-C Grant, MFP Grant and TBI Grant



Major Accounting Units

Major Accounting Unit	SFY16 Actual	SFY 17 Adjusted Authorized	SFY18 Agency Request	SFY18 Governor's Request	SFY19 Agency Request	SFY19 Governor's Request
9300-7100 Dev. Services	\$109.7	\$115.9	\$125.4	\$125.4	\$140.8	\$130.8
9300-7110 Children - IHS	\$2.6	\$3.2	\$3.5	\$3.5	\$3.5	\$3.5
9300-7013 Family Support	\$3.9	\$4.9	\$4.6	\$4.6	\$4.6	\$4.6
9300-7014 Early Interven.	\$5.0	\$5.4	\$6.8	\$5.4	\$6.8	\$5.4
9300-7016 ABD Services	\$11.4	\$12.5	\$12.8	\$12.8	\$13.1	\$13.1
9300-7164 NH DRF Laconia	\$1.2	\$1.3	\$1.3	\$1.3	\$1.3	\$1.3
9300-5191 Special Med Svc	\$2.2	\$2.6	\$2.6	\$2.6	\$2.6	\$2.6
9300-5947 Program Support	\$1.7	\$1.7	\$1.7	\$1.8	\$1.7	\$1.8

Amounts are General Funds only and in Millions



Staffing – Bureau of Developmental Services

12

Authorized Positions SFY18	Accounting Unit	Vacant
18	Program Support	2
17	NH Designated Receiving Facility	1
2	Infant – Toddler Program PT-C	0
2	Social Services Block Grant	0
6	Medicaid Compliance	2
12	Special Medical Services	1
57	Total	6



Key Accomplishments

High Quality Services - NH Ranked #3 nationally in 2016.

Low-cost - 2016 average cost of \$45,553 on the DD waiver, lowest among the NE states.

Focusing on improvements recommended in the LBA Audit.

Strong support network for families.

Focusing effort to improve clinical resources.



Major Challenges

The Developmental Services Waiting List- serving all of those identified as needing services.

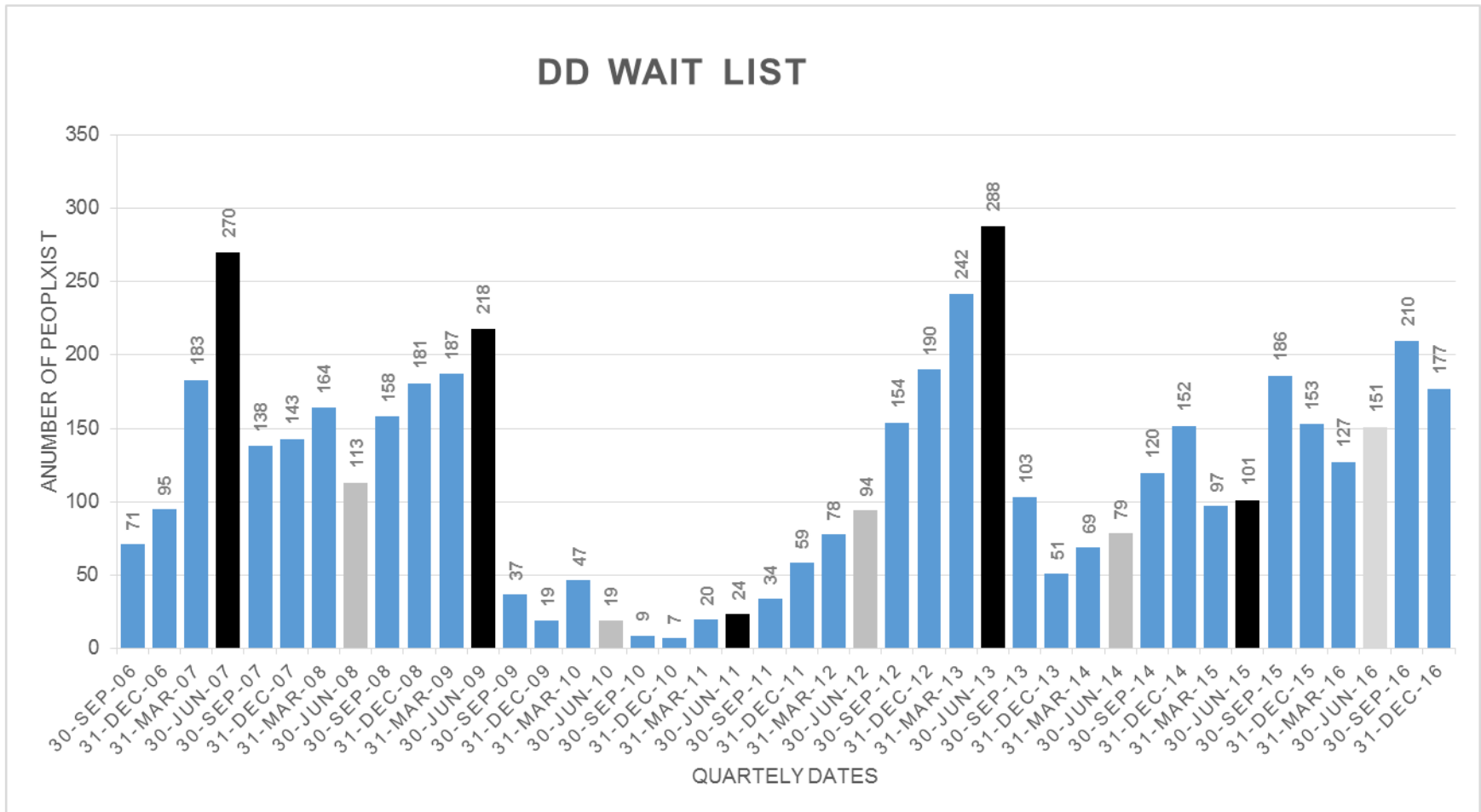
Increase of number of eligible individuals for the foreseeable future, resulting in part from: increase in ASD, aging caregivers, and medical advancements.

A continuum of support for those who require Intensive Treatment Services.

Workforce and capacity challenges for the area agencies and subcontract agencies.



Developmental Disability Waiting List



Developmental Disability Waiting List

- As of January 31, 2017 there were 194 people waiting for services.
- There are three categories of those waiting
 - A- Transitioning from the school system
 - B- Newly eligible
 - C- Already receiving services who require additional services
- Of these 194 people currently waiting:
 - ~49 have recently left the school system (A's);
 - ~43 have recently been found eligible for services (B's); and
 - ~102 receive some level of service and require additional services due to increasing needs or circumstances. (C's)

