

Division of Public Health Services

Presented to Senate Finance

April 28, 2017

Lisa Morris, Director

Dolores Cooper, Finance Manager

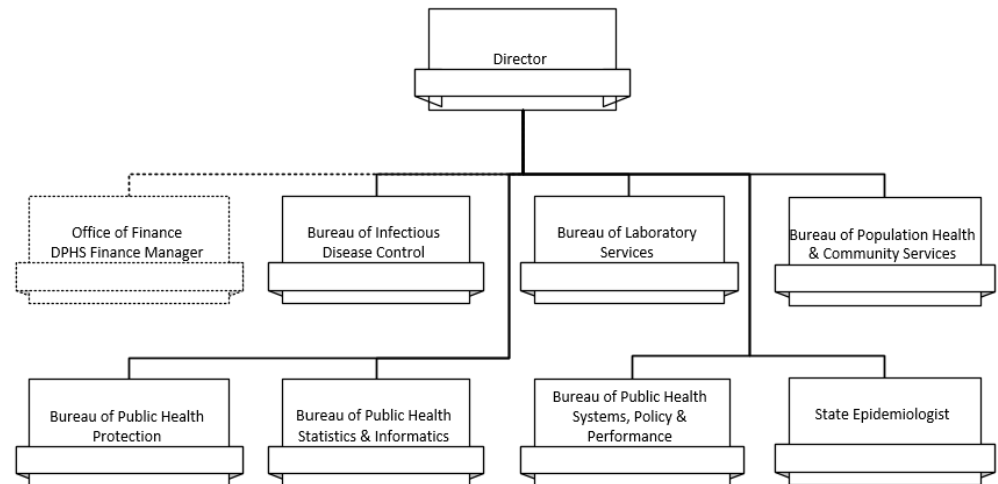


Division of Public Health Services (DPHS)

2

Public Health – To Prevent Disease, Prolong Life and Promote Health

- ▶ Protect the health of all people and communities.
- ▶ Target evidence based strategies that we know will improve health.
- ▶ Ensure access to high value, preventative focused healthcare.
- ▶ Collect and analyze data that inform us.
- ▶ Improve health outcomes.



Key Programs / Services

3

Bureau of Population Health and Community Services (BPHCS)

Promotes Health, Improves Chronic Conditions and Reduces Health Inequities

- Maternal and Child Health (Nutrition, Infant Screenings, Home Visiting - 2016/4,639 Home Visits)
- Family Planning (2016/16,500 families served)
- Chronic Disease Prevention and Screening (Cancer, Obesity Prevention, Oral Health, Tobacco Prevention and Cessation)

Bureau of Infectious Disease Control (BIDC)

Identifies, Investigates, Monitors and Prevents Infectious Disease

- Disease Surveillance and Investigation (2016/6,148 infectious disease cases identified and investigated)
- Vaccine Distribution and Management (2016/376,871 doses of vaccine for children), Quality Assurance and Improvement
- Public Health Emergency Preparedness and Response
- Provider Training and Education

Bureau of Public Health Laboratories (BPHL)

Clinical and Environmental Laboratory Testing

- Environmental Health/Biomonitoring
- Food Emergency Response Network
- Drinking Water Laboratory
- Microbiology and Virology



Key Programs / Services

4

Bureau of Public Health Protection (BPHP)

Assures Public Safety from Environmental Public Health Risks

- Food Emergency Response
- Asthma Education and Data Collection/Analysis
- Health Officer Liaison (with municipalities)
- Radiological Health (4,000 inspections/year)
- Food Protection (4,500 inspections/year)
- Lead Poisoning Prevention

Bureau of Public Health Statistics & Informatics (BPHSI)

Creation and Distribution of NH Health Statistics

- WISDOM web based portal: identify hotspots to target programs
- Surveys: Behavioral Risk Factor Surveillance Survey, Youth Risk Behavior Survey
- Environmental Public Health Tracking

Bureau of Public Health Systems, Policy & Performance (BPHSPP)

Policy and Performance-Public Health Systems, Quality Improvement and Performance Management

- State Health Improvement Plan (SHIP)
- 13 Public Health Regional Networks
- Quality Improvement



General Fund “programs” not Maintenance of Effort (MOE)/MATCH

5

Activity/AU	Program	2018 GF	2018 Non GF	2018 Total Funds	2019 GF	2019 Non GF	2019 Total
903010-7966	PH Lab	\$3,644	\$5,847	\$9,491	\$3,802	\$5,626	\$9,428
901510-5390	Food Protection	\$1,065	\$429	\$1,494	\$1,097	\$429	\$1,529
902510-5178	Immunization	\$317	\$1,950	\$2,267	\$317	\$2,003	\$2,320
901010-7965(073)	Loan Repayment	\$200	\$410	\$610	\$200	\$410	\$610
901510-5391	Radiological Health	\$5	\$1,291	\$1,296	\$5	\$1,309	\$1,314
	Programs Total	\$5,231	\$9,977	\$15,208	\$5,421	\$9,827	\$15,248
	Amounts are General Funds, rounded to \$000						



General Fund Programs/Impact Statement

6

- **Public Health Laboratory**: Testing for Rabies, Tuberculosis, Hepatitis, HIV and STD, Mosquito, Dairy, Shellfish, Water

Impact if funding reduced or eliminated: Discontinued surveillance, identification of contaminants in drinking water systems and potential spread of infectious disease.

- **Food Protection**: Licensing and inspections of food establishments including dairy, shellfish and response to food related disease outbreaks.

Impact if funding reduced or eliminated: Reduced capacity for inspections, licensing approvals delayed, reduced capacity to respond to complaints.

- **Immunization**: Immunization Information System (to order childhood vaccines for 300 providers, registry to record vaccine administered in NH), purchase vaccines for children and capacity to rapidly purchase needed vaccine in the event of a public health emergency.

Impact if funding reduced or eliminated: Reduced savings/efficiencies as activities would need to be performed manually, increased errors in vaccine administration, reduction in ability to respond to a public health emergency.

General Fund Programs/Impact Statement

- **Loan Repayment**: Provides funds for educational loan repayment to health care professionals working in areas of NH designated as being medically underserved (includes mental health and substance use disorders practitioners).

Impact if funding reduced or eliminated: Reduced health care provider coverage in medically underserved areas of the state.

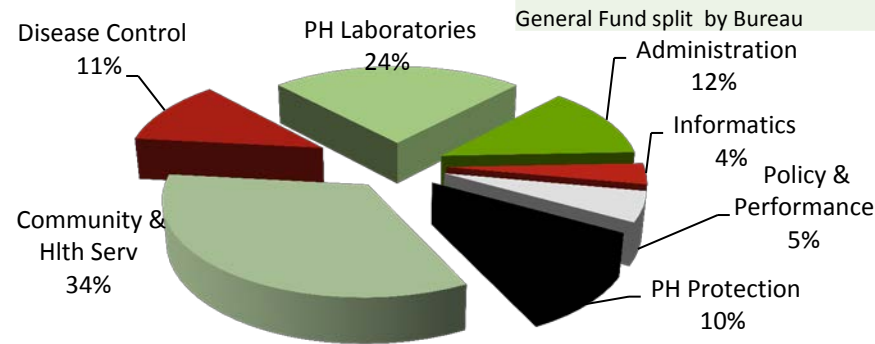
- **Radiological Health**

Funding for Vermont Yankee Nuclear Power Plant was eliminated (currently not operating). General funds replace needed funding to sustain staffing. Staff coordinate radiological emergency preparedness and response activities.

Impact if funding reduced or eliminated: Reduce staffing would impact emergency response capabilities.

Financial Summary – Source of Funds total budget

8



Total	SFY 16 Actual	SFY 17 Adjusted Authorized	SFY 18 Governor's Budget	SFY 19 Governor's Budget
Total	\$79	\$98	\$102	\$101
General	\$14	\$15	\$15	\$16
Federal	\$39	\$51	\$55	\$55
Other	\$26	\$32	\$32	\$31
GF%	17%	16%	15%	16%
Non GF	83%	84%	85%	84%
Amounts in millions				

Of the \$15/\$16m GF - 44% and 43% is for MOE/MATCH

56% and 57% is for operational/GF Programs

Major Federal Programs – Federal Funds >1ml

Activity/AU	Program	2018 Total Funds	2018 Federal Funds	2019 Total Funds	2019 Federal Funds
9020-5260	Women Infant & Children (WIC)	\$14,142	\$14,142	\$14,150	\$14,150
9025-7545	PH Emergency Preparedness	\$5,489	\$4,859	\$5,505	\$4,877
9020-5896	Home Visiting Formula Grant	\$2,142	\$2,142	\$2,144	\$2,144
9025-5178	Immunization	\$2,267	\$1,950	\$2,320	\$2,004
9030-1835	NH Epidemiology & Laboratory Capacity (ELC)	\$1,888	\$1,888	\$1,832	\$1,832
9020-5659	Comprehensive Cancer	\$2,062	\$1,844	\$2,077	\$1,858
9025-2239	Hospital Preparedness	\$1,486	\$1,486	\$1,439	\$1,439
9020-5190	Maternal Child Health Block Grant (MCH BG)	\$4,362	\$1,462	\$4,356	\$1,456
9025-2222	Ryan White Care Grant (Part B)	\$1,305	\$1,305	\$1,308	\$1,308
9020-0831	Home Visiting D89 Competitive	\$1,263	\$1,263	\$1,264	\$1,264
9020-1299	Project Launch	\$1,232	\$1,232	\$958	\$958
9020-5530	Family Planning	\$1,758	\$1,162	\$1,760	\$1,164
9020-1227	CDC Combined Chronic Disease	\$1,124	\$1,124	\$1,135	\$1,135
9020-5608	Tobacco Prevention	\$1,058	\$918	\$1,072	\$932
Amounts are rounded to \$000					

Financial Summary – Public Health Staffing by Bureau

10

Authorized Positions SFY 2017	%	Vacancy Rate (March '17)	Public Health Bureau
10	3.9	20%	Administration
14	5.5	7%	Bureau of Statistics & Informatics
17	6.7	24%	Bureau of PH Systems, Policy & Performance Management
36	14.1	11%	Bureau of Public Health Protection
51	20.0	12%	Bureau of Population Health & Community Services
57	22.4	18%	Bureau of Infectious Disease Control
70	27.5	7%	Public Health Laboratories