

Nashua Opioid Crisis Summary

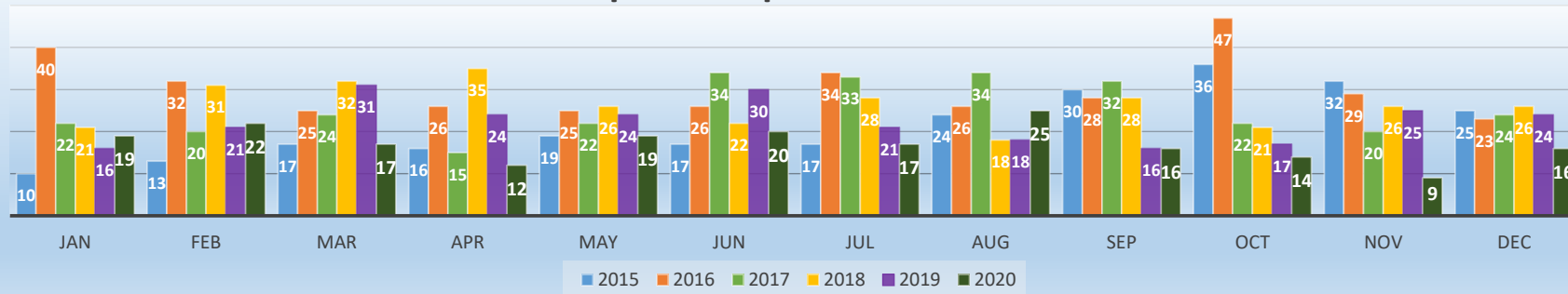
Change in Past 365 Days Compared to Previous 365 Days

-23% Decrease in Total Overdoses

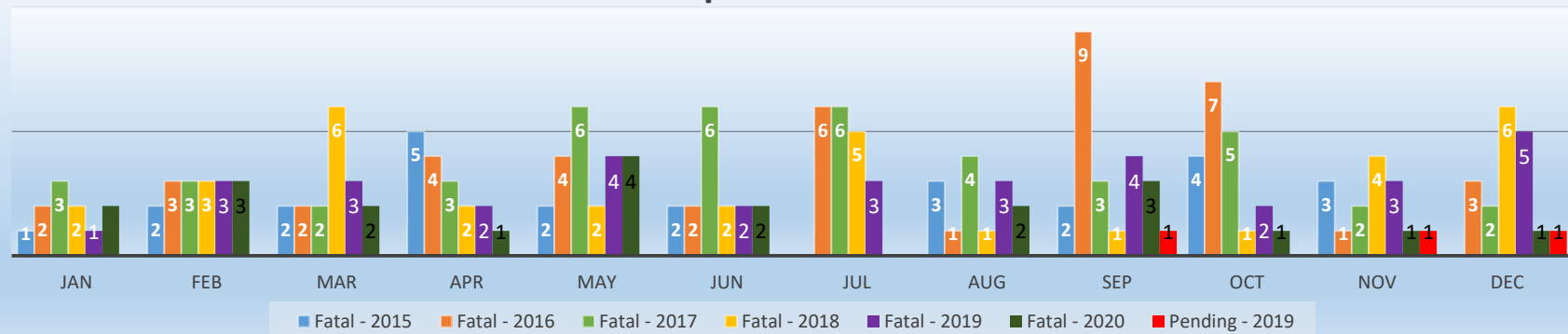
-41% Decrease in Fatal Overdoses (Includes Pending)

2015		2016		2017		2018		2019		2020		All Years	
Total ODs	256	Total ODs	361	Total ODs	302	Total ODs	314	Total ODs	266	Total ODs	206	Total ODs	1702
Fatalities	26	Fatalities	44	Fatalities	45	Fatalities	35	Fatalities	35	Fatalities	22	Fatalities	207
Pending	0	Pending	0	Pending	0	Pending	0	Pending	3	Pending	0	Pending	3
Fatality %	10%	Fatality %	12%	Fatality %	15%	Fatality %	11%	Fatality %	14%	Fatality %	11%	Fatality %	12%
Narcan (mg)	720	Narcan (mg)	997	Narcan (mg)	766	Narcan (mg)	841	Narcan (mg)	868	Narcan (mg)	659	Narcan (mg)	4191

Suspected Opioid Overdoses

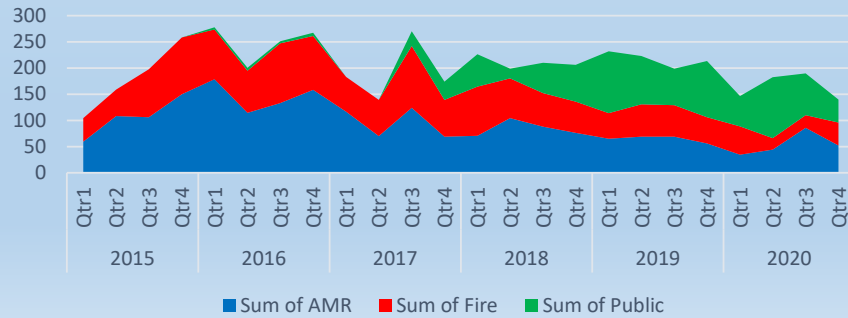


Fatal Opioid Overdoses*

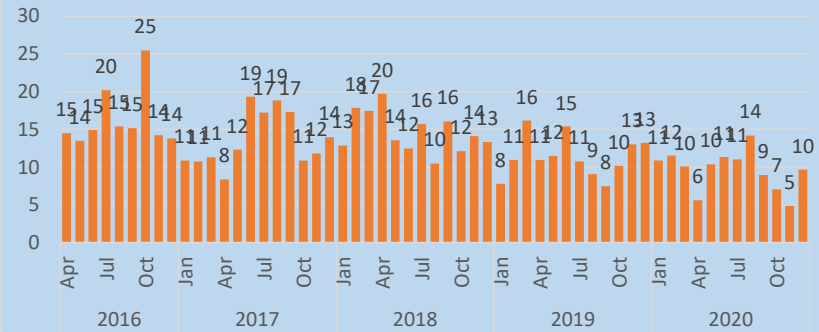


*All fatality data is subject to NH Medical Examiner confirmation and as such, may change.

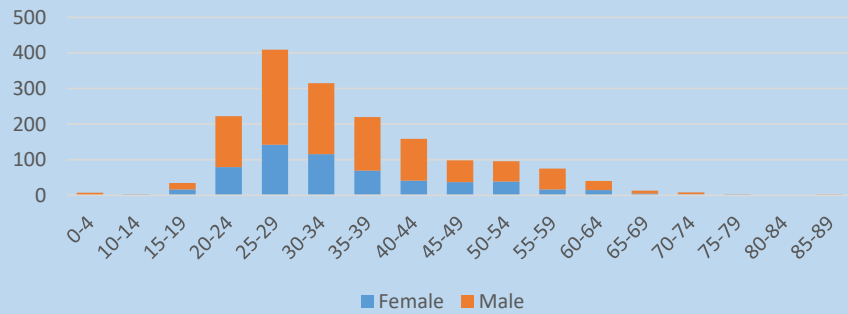
Milligrams of Narcan by Source



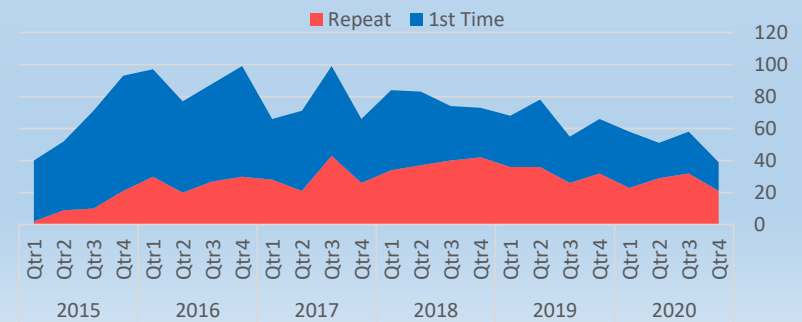
Committed Ambulance Unit Hours



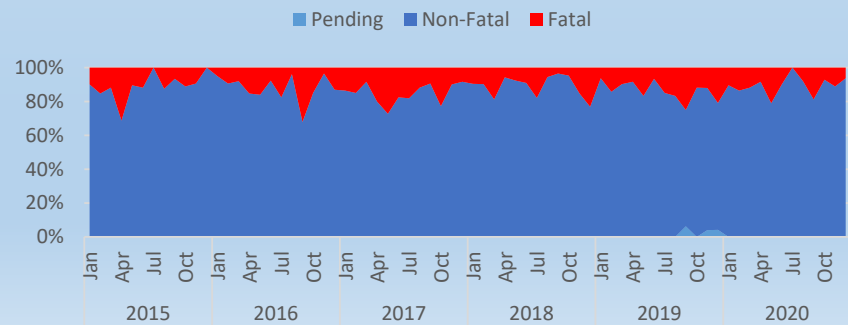
OD - Age / Gender



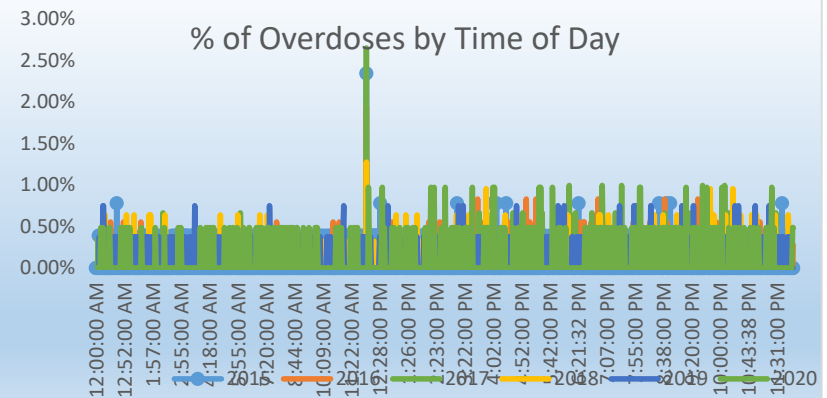
OD - 1st Time Patient vs Repeat



Percentage of Fatal Overdoses



% of Overdoses by Time of Day



*All fatality data is subject to NH Medical Examiner confirmation and as such, may change.

Data as of 1/6/2021

Nashua Opioid Crisis Summary

Line	Gateway to Recovery Statistics	2016	2017	2018	2019	Q1 2020	Q2 2020	Q3 2020	Q4 2020	Q1 2021	Overall
1	Number of Walk-In Requests for Safe Station:	51	1301	1209	788	192	179	0	#REF!	#REF!	#REF!
2	Average SafeStation Contacts Per Day	1.21	3.56	3.31	2.16	2.11	1.97	0.00			#REF!
3	Number of Participants Taken to Substance Misuse Treatment Facility:	45	1153	1065	608	0	0	0	#REF!	#REF!	#REF!
4	Number of Participants Taken to a Hospital Emergency Department:	5	130	138	175	37	19	0	#REF!	#REF!	#REF!
5	SIH	0	65	60	93	16	6	0	#REF!	#REF!	#REF!
6	SNHMC	5	65	78	82	21	13	0	#REF!	#REF!	#REF!
7	Percent of Participant Requiring Transport to Hospital ED:	10%	10%	11%	22%	19%	11%	0%	#REF!	#REF!	#REF!
8	Average Number of Minutes AMR / Fire Companies "Not Available":	14.3	11.1	9.1	9.7	9.3	8.1	0.0	#REF!	#REF!	9.8
9	Number of UNIQUE Participants to Nashua SafeStation:	45	814	754	532	146	124	1996	-1	-1	1996
10	Number of Repeat Participant visits to SafeStation:	15	673	709	178	122	131	0	#REF!	#REF!	#REF!
11	Gender Breakdown										
12	Male	31	905	868	219	153	149	0	#REF!	#REF!	#REF!
12	Female	20	396	340	73	39	30	0	#REF!	#REF!	#REF!
13	Number of Unique Participants Seen in both City's SafeStation Program:										566
14	Number of Unique Nashua Participants Who Overdosed Prior to Entry into SafeStation:										453
15	Number of Unique Nashua Participants Who Overdosed After Entry SafeStation:										184
16	Total Number of Nashua Participant Overdoses Prior to Entry into SafeStation:										818
17	Total Number of Nashua Participant Overdoses After Entry SafeStation:										447
18	Number of Fatal Overdoses after Patient Entered Nashua SafeStation:										21
Station Summary											
19	Fire Alarm	3	62	43	30	6	10	0	#REF!	#REF!	#REF!
20	Station 1	21	457	470	319	100	93	0	#REF!	#REF!	#REF!
21	Station 2	2	236	193	103	20	14	0	#REF!	#REF!	#REF!
22	Station 3	0	32	28	16	0	8	0	#REF!	#REF!	#REF!
23	Station 4	24	470	443	305	64	53	0	#REF!	#REF!	#REF!
24	Station 5	1	27	16	12	1	1	0	#REF!	#REF!	#REF!
25	Station 6	0	17	16	3	1	0	0	#REF!	#REF!	#REF!
26					#REF!						
27					#REF!						
28					#REF!						

*All fatality data is subject to NH Medical Examiner confirmation and as such, may change.

Nashua Opioid Crisis Summary

Communities Served By The Nashua SafeStation Program

Community	Count	Community	Count	Community	Count	Community	Count
Nashua, NH	1570	KEENE, NH	9	FARMINGTON, NH	4	Billerica, MA	2
Homeless	661	WINDHAM, NH	9	Greenville, NH	4	BRISTOL, NH	2
MANCHESTER, NH	314	JAFFREY, NH	9	BOSTON, MA	4	FITCHBURG, MA	2
HUDSON, NH	164	DEERFIELD, NH	8	EPPING, NH	4	BRONX, NY	2
MILFORD, NH	89	NORTHFIELD, NH	8	LANCASTER, NH	4	Melrose, MA	2
MERRIMACK, NH	54	ALLENSTOWN, NH	7	LAWRENCE, MA	4	NEW IPSWICH, MA	2
DERRY, NH	48	PLAISTOW, NH	7	Gilmanton, NH	4	MEREDITH, NH	2
ROCHESTER, NH	47	BEDFORD, NH	7	Winthrop, MA	3	TEWKSBURY, MA	2
CONCORD, NH	33	GOFFSTOWN, NH	7	WOLFEBORO, NH	3	DALTON, NH	2
LACONIA, NH	32	SOMERSWORTH, NH	7	KINGSTON, NH	3	BARRINGTON, NH	2
LITCHFIELD, NH	29	LITTLETON, NH	7	HANCOCK, NH	3	EXETER, NH	2
LONDONDERRY, NH	25	PLYMOUTH, NH	7	Westford, MA	3	AUBURN, NH	2
SALEM, NH	22	SANBORNTON, NH	6	LINCOLN, NH	3	WHITEFIELD, NH	2
PELHAM, NH	20	BOSCAWEN, NH	6	CAMPTON, NH	3	East Hampstead, NH	2
FRANKLIN, NH	17	PORTSMOUTH, NH	6	NEW BOSTON, NH	3	CANTERBURY, NH	2
DOVER, NH	17	ALTON, NH	6	EPSOM, NH	3	East Hampsted, NH	2
WILTON, NH	15	Chester, NH	5	DRACUT, MA	3	WINCHESTER, NH	2
HOLLIS, NH	15	Pepperell, MA	5	New Market, NH	3	Penacook, NH	2
BERLIN, NH	15	HAVERHILL, MA	5	NEWTON, NH	3	BRENTWOOD, NH	2
BROOKLINE, NH	14	CONWAY, NH	5	PEMBROOK, NH	3	TROY, NH	2
AMHERST, NH	14	DUNBARTON, NH	5	NORTH HAVERHILL, NH	3	Machester, NH	1
TILTON, NH	12	SANDOWN, NH	5	Rindge, NH	3	Gloucester, MA	1
NEW IPSWICH, NH	12	HAMPTON, NH	5	RAYMOND, NH	3	Winchendon, MA	1
Unknown	11	BELMONT, NH	5	WORCESTER, MA	2	QUINCY, MA	1
DURHAM, NH	11	CLAREMONT, NH	5	LUNENBURG, MA	2	CHARLESTOWN, NH	1
LOWELL, MA	11	PEMBROKE, NH	5	FREMONT, NH	2	BENNINGTON, NH	1
GREENFIELD, NH	10	TEMPLE, NH	5	ATKINSON, NH	2	Winchester, MA	1
GILFORD, NH	10	HAMPSTEAD, NH	4	Woburn, MA	2	MILTON, NH	1
HOOKSETT, NH	10	PETERBOROUGH, NH	4	PITTSFIELD, NH	2	Unknown, MT	1
OSSIPEE, NH	10	Tyngsboro, MA	4	LEBANON, ME	2	Berkley, MA	1

*All fatality data is subject to NH Medical Examiner confirmation and as such, may change.

Data as of 1/6/2021