

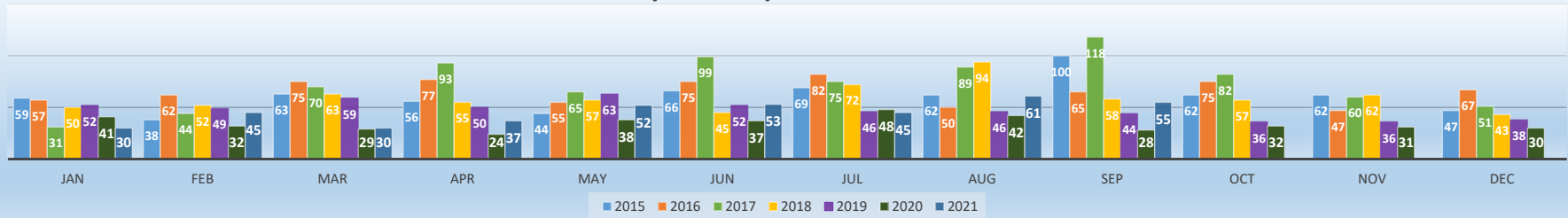
Manchester Opioid Crisis Summary

Change in Past 365 Days Compared to Previous 365 Days

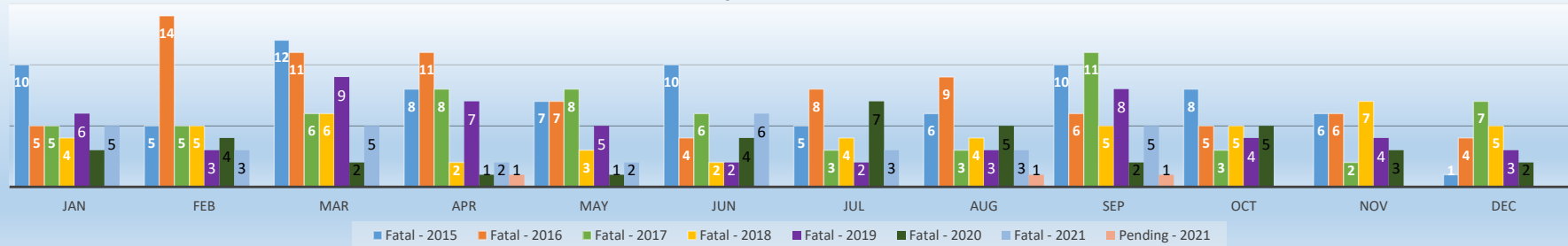
17% Increase in Total Overdoses
18% Increase in Fatal Overdoses (Includes Pending)

2015		2016		2017		2018		2019		2020		2021		All Years	
Total ODs	728	Total ODs	787	Total ODs	877	Total ODs	706	Total ODs	568	Total ODs	411	Total ODs	408	Total ODs	4482
Fatalities	88	Fatalities	90	Fatalities	67	Fatalities	52	Fatalities	56	Fatalities	39	Fatalities	34	Fatalities	426
Pending	0	Pending	0	Pending	0	Pending	0	Pending	0	Pending	0	Pending	3	Pending	3
Fatality %	12%	Fatality %	11%	Fatality %	8%	Fatality %	7%	Fatality %	10%	Fatality %	9%	Fatality %	9%	Fatality %	10%
Narcan (mg)	355	Narcan (mg)	351	Narcan (mg)	796	Narcan (mg)	549	Narcan (mg)	637	Narcan (mg)	800	Narcan (mg)	0	Narcan (mg)	2688

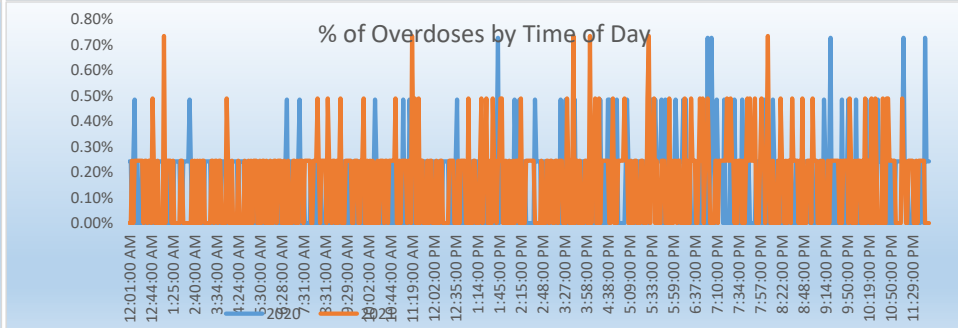
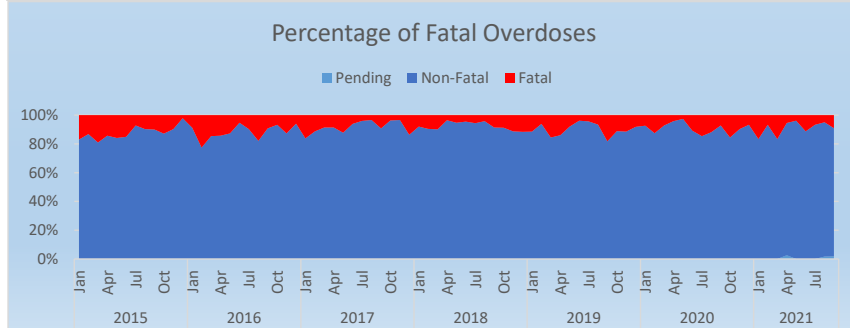
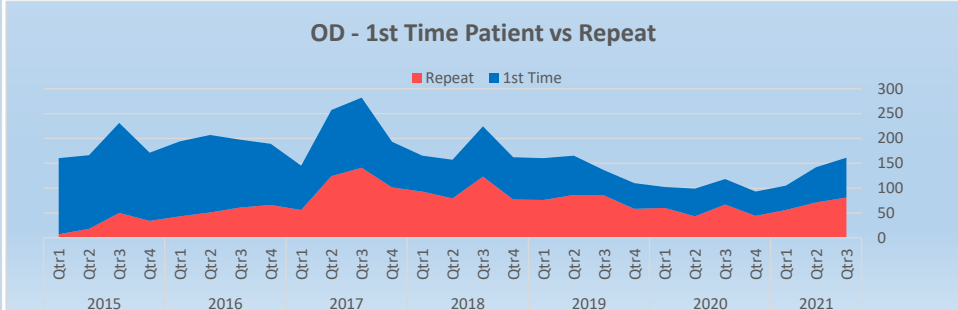
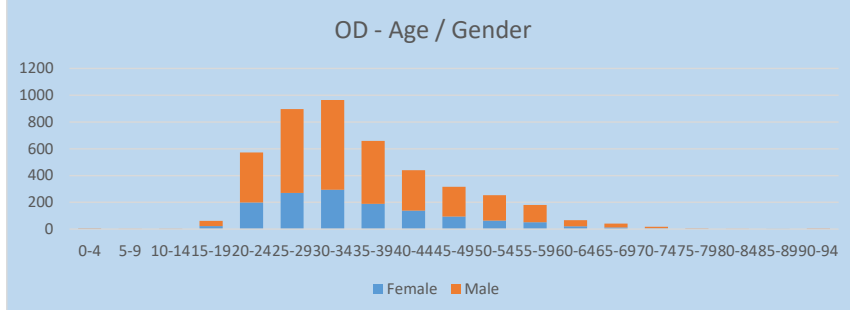
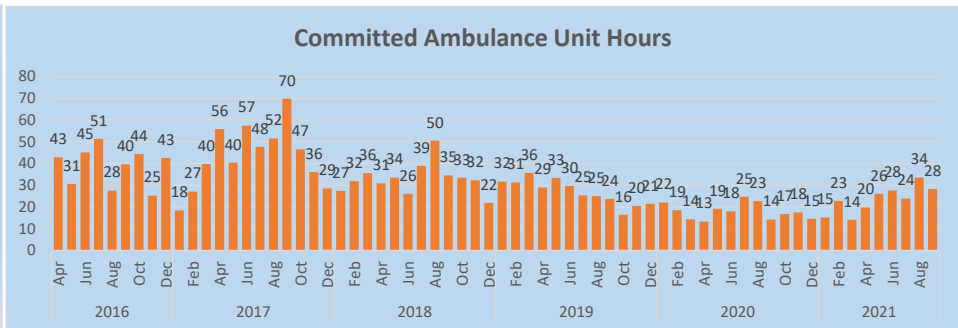
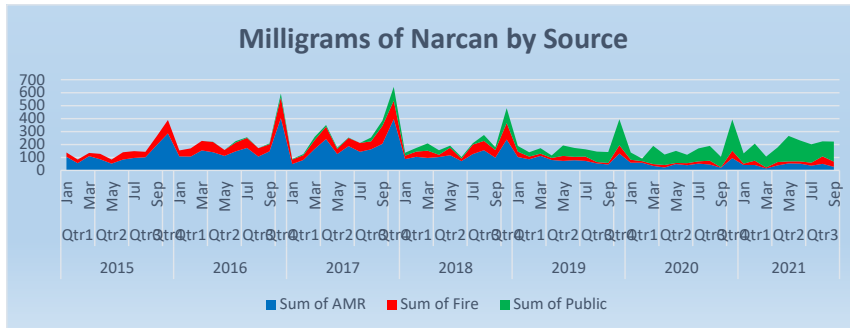
Suspected Opioid Overdoses



Fatal Opioid Overdoses*



*All fatality data is subject to NH Medical Examiner confirmation and as such, may change.



*All fatality data is subject to NH Medical Examiner confirmation and as such, may change.

Manchester Opioid Crisis Summary

Line	SafeStation Statistics as of 09/23/2021	2016	2017	2018	2019	Q1 2020	Q2 2020	Q3 2020	Q4 2020	Q1 2021	Q2 2021	Q3 2021	Overall	
1	Number of Walk-In Requests for Safe Station:	976	1945	1919	1805	294	201	207	189	91	256	269	8,152	
2	Average SafeStation Contacts Per Day	4.07	5.33	5.26	4.95	3.23	2.21	2.25	2.05	1.01	2.81	2.92	4.13	
3	Number of Participants Taken to Substance Misuse Treatment Facility:	895	1394	1419	1442	238	238	149	112	57	159	177	6,280	
4	Number of Participants Taken to a Hospital Emergency Department:	80	544	496	350	55	42	39	30	22	5	#REF!	1,663	
5		CMC	69	265	215	150	27	18	21	18	14	1	#REF!	798
6		ELLIOT	11	279	281	200	28	24	18	12	8	4	#REF!	865
7	Percent of Participant Requiring Transport to Hospital ED:	8%	28%	26%	19%	19%	21%	19%	16%	24%	2%	#REF!	20%	
8	Average Number of Minutes AMR / Fire Companies "Not Available":	18.4	15.6	12.8	10.4	10.7	11.0	11.0	11.0	10.8	10.2	10.0	13.4	
9	Number of UNIQUE Participants to Manchester SafeStation:	725	1316	1339	1240	233	147	178	156	78	194	202	4423	
10	Number of Repeat Participant visits to SafeStation:	252	872	962	297	176	142	128	116	46	119	114	3,224	
11	Gender Breakdown	Male	664	1413	1373	393	200	156	160	141	69	208	4,997	
12		Female	312	532	546	148	94	45	47	22	46	49	1,889	
13	Number of Unique Participants Seen in both City's SafeStation Program:												572	
14	Number of Unique Manchester Participants Who Overdosed Prior to Entry into SafeStation:												841	
15	Number of Unique Manchester Participants Who Overdosed After Entry SafeStation:												412	
16	Total Number of Manchester Participant Overdoses Prior to Entry into SafeStation:												1,464	
17	Total Number of Manchester Participant Overdoses After Entry SafeStation:												877	
18	Number of Fatal Overdoses after Patient Entered Manchester SafeStation:												48	
Station Summary														
19	Central Station	806	1628	1478	1352	228	169	139	149	56	98	204	6,103	
20	Station 2	23	47	83	59	10	8	10	7	3	7	8	257	
21	Station 3	22	34	58	44	5	4	2	2	3	6	3	180	
22	Station 4	8	4	10	13	0	1	2	0	0	0	2	38	
23	Station 5	24	55	65	59	8	0	4	2	0	3	1	220	
24	Station 6	33	66	83	105	16	6	24	18	5	0	22	356	
25	Station 7	16	31	56	82	17	8	11	6	3	0	19	230	
26	Station 8	7	13	11	11	2	0	1	0	1	3	4	49	
27	Station 9	8	10	15	13	5	2	4	3	0	1	5	61	
28	Station 10	29	57	60	67	3	3	10	2	3	1	1	235	

1
2

*All fatality data is subject to NH Medical Examiner confirmation and as such, may change.

Manchester Opioid Crisis Summary

Communities Served By The Manchester SafeStation Program

Community	Count	Community	Count	Community	Count	Community	Count
MANCHESTER, NH	3472	ALLENSTOWN, NH	32	MILTON, NH	15	HAMPSTEAD, NH	9
Nashua, NH	463	TILTON, NH	31	CANDIA, NH	15	SANDOWN, NH	9
ROCHESTER, NH	237	PLYMOUTH, NH	30	LEBANON, NH	15	WINDHAM, NH	9
CONCORD, NH	230	NORTHFIELD, NH	28	LOUDON, NH	15	Manchester nh	8
LACONIA, NH	206	AUBURN, NH	27	CONWAY, NH	14	Derry	8
DERRY, NH	170	PEMBROKE, NH	27	Concord	13	SANFORD, ME	8
Manchester	150	EXETER, NH	27	WAKEFIELD, NH	13	NEWMARKET, NH	8
FRANKLIN, NH	127	LAWRENCE, MA	27	STRAFFORD, NH	13	ASHLAND, NH	8
DOVER, NH	118	CLAREMONT, NH	26	FREMONT, NH	13	ANTRIM, NH	8
SALEM, NH	83	Nashua	24	HENNIKER, NH	13	NEW HAMPTON, NH	8
GOFFSTOWN, NH	77	HAMPTON, NH	22	Rochester	12	NEW IPSWICH, NH	8
LONDONDERRY, NH	70	EPPING, NH	21	BARRINGTON, NH	12	Chester, NH	8
RAYMOND, NH	66	PLAISTOW, NH	21	SALISBURY, MA	12	GROVETON, NH	7
HUDSON, NH	64	Homeless	21	DUNBARTON, NH	12	HOLLIS, NH	7
MILFORD, NH	59	LITCHFIELD, NH	20	HARTFORD, CT	12	STODDARD, NH	7
BEDFORD, NH	57	NEW BOSTON, NH	19	Gilmanton, NH	12	PORTLAND, ME	7
SEABROOK, NH	50	ALTON, NH	19	EPSOM, NH	12	Newport, NH	7
MERRIMACK, NH	46	DEERFIELD, NH	19	BOSCAWEN, NH	12	EAST KINGSTON, NH	7
HOOKSETT, NH	45	WOLFEBORO, NH	19	KINGSTON, NH	12	AMHERST, NH	7
KEENE, NH	44	HILLSBORO, NH	18	Laconia	11	OSSIPPEE, NH	6
SOMERSWORTH, NH	42	MEREDITH, NH	18	Greenville, NH	11	WEBSTER, NH	6
OSSIPEE, NH	41	BRISTOL, NH	17	BOW, NH	11	Franklin	6
PORTSMOUTH, NH	40	GILFORD, NH	17	COLEBROOK, NH	11	Keene	6
WEARE, NH	39	HAVERHILL, MA	17	ATKINSON, NH	11	EVERETT, MA	6
BOSTON, MA	39	NORTH CONWAY, NH	17	PITTSFIELD, NH	10	EFFINGHAM, NH	6
FARMINGTON, NH	37	ALEXANDRIA, NH	17	CANTERBURY, NH	10	THORNTON, NH	6
BERLIN, NH	37	BARNSTEAD, NH	17	LANCASTER, NH	10	WILTON, NH	6
LOWELL, MA	35	LYNN, MA	16	NEW DURHAM, NH	10	GREENFIELD, NH	6
LITTLETON, NH	35	NORTHWOOD, NH	16	PELHAM, NH	9	RUMNEY, NH	6
BELMONT, NH	33	PETERBOROUGH, NH	15	MYRTLE BEACH, SC	9	GONIC, NH	6

*All fatality data is subject to NH Medical Examiner confirmation and as such, may change.

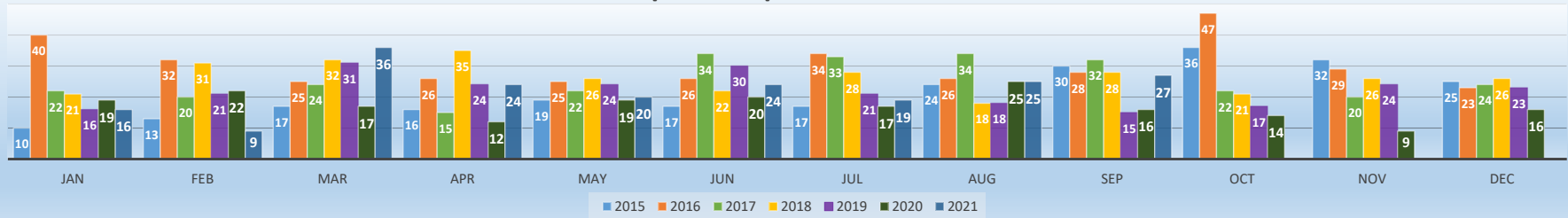
Nashua Opioid Crisis Summary

Change in Past 365 Days Compared to Previous 365 Days

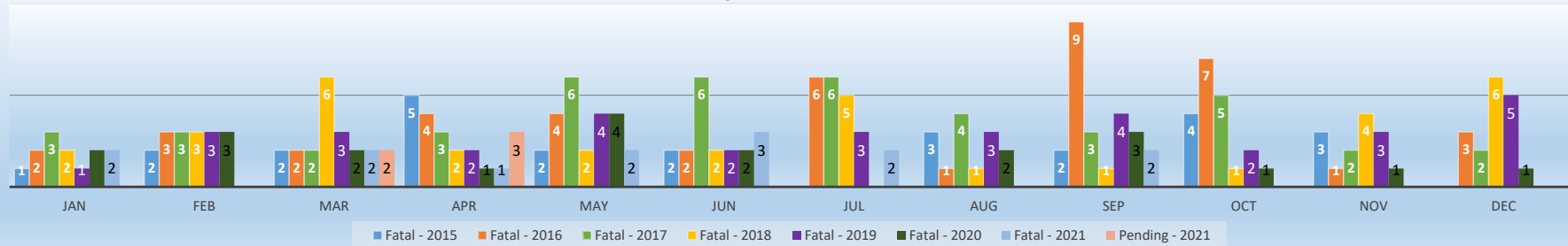
3% Increase in Total Overdoses
-24% Decrease in Fatal Overdoses (Includes Pending)

2015		2016		2017		2018		2019		2020		2021		All Years	
Total ODs	256	Total ODs	361	Total ODs	302	Total ODs	314	Total ODs	263	Total ODs	206	Total ODs	200	Total ODs	1897
Fatalities	26	Fatalities	44	Fatalities	45	Fatalities	35	Fatalities	35	Fatalities	22	Fatalities	14	Fatalities	221
Pending	0	Pending	0	Pending	0	Pending	0	Pending	0	Pending	0	Pending	5	Pending	5
Fatality %	10%	Fatality %	12%	Fatality %	15%	Fatality %	11%	Fatality %	13%	Fatality %	11%	Fatality %	10%	Fatality %	12%
Narcan (mg)	105	Narcan (mg)	159	Narcan (mg)	412	Narcan (mg)	278	Narcan (mg)	227	Narcan (mg)	331	Narcan (mg)	0	Narcan (mg)	1180

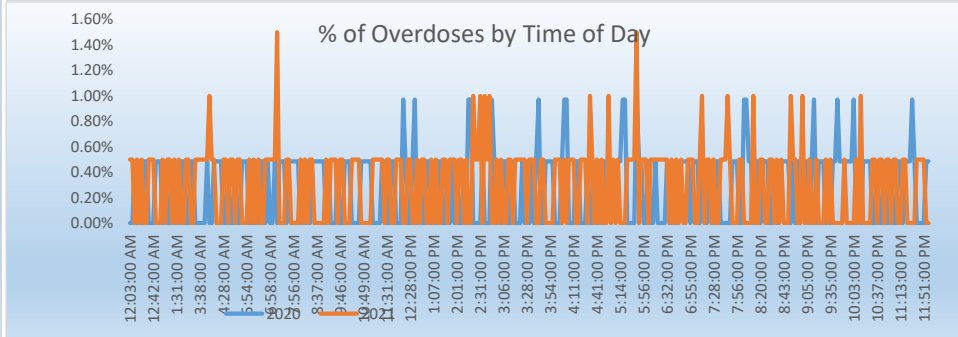
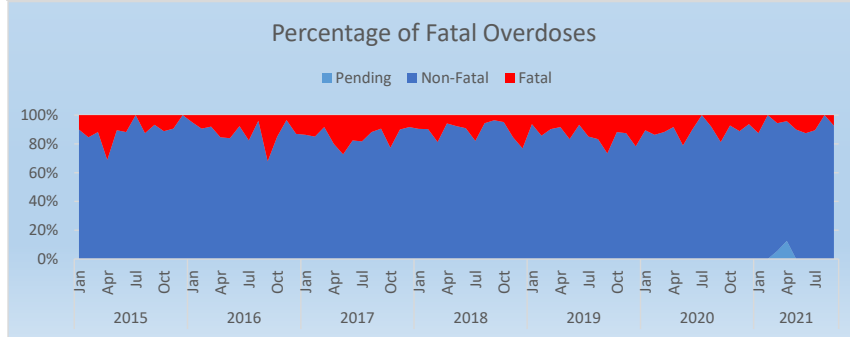
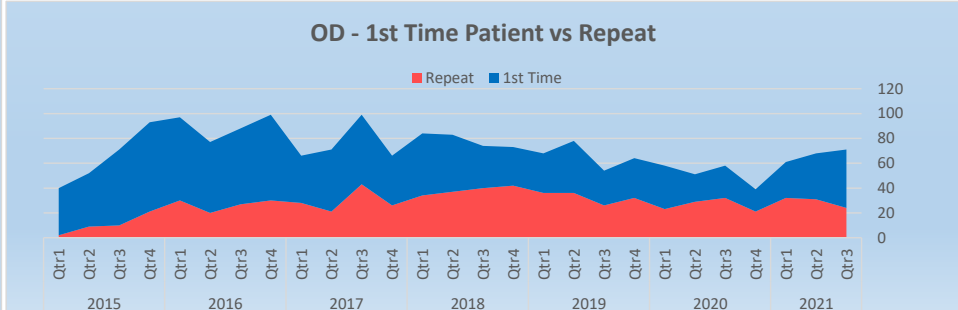
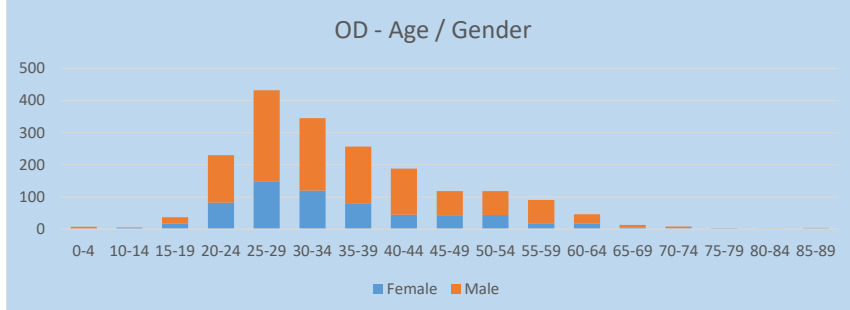
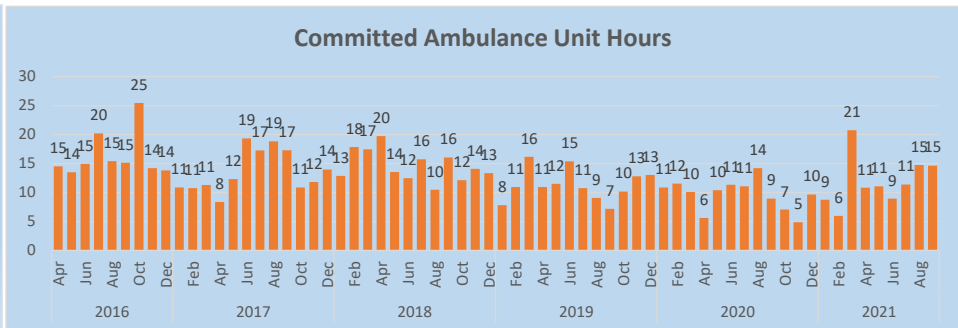
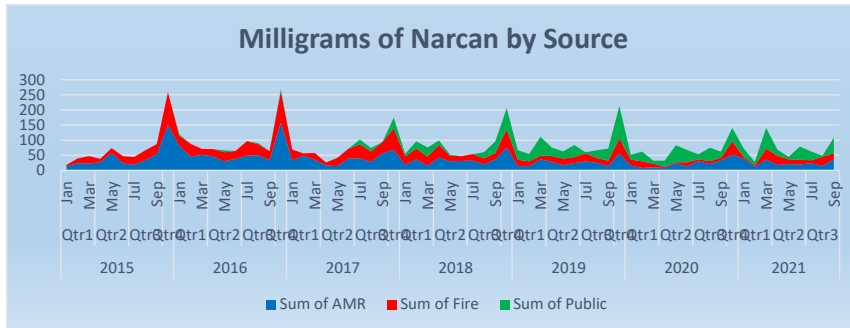
Suspected Opioid Overdoses



Fatal Opioid Overdoses*



*All fatality data is subject to NH Medical Examiner confirmation and as such, may change.



*All fatality data is subject to NH Medical Examiner confirmation and as such, may change.

Nashua Opioid Crisis Summary

Line	Gateway to Recovery Statistics	2016	2017	2018	2019	Q1 2020	Q2 2020	Q3 2020	Q4 2020	Q1 2021	Q2 2021	Q3 2021	Overall
1	Number of Walk-In Requests for Safe Station:	51	1301	1209	788	192	179	#REF!	0	#REF!	#REF!	#REF!	#REF!
2	Average SafeStation Contacts Per Day	1.21	3.56	3.31	2.16	2.11	1.97		0.00			#REF!	#REF!
3	Number of Participants Taken to Substance Misuse Treatment Facility:	45	1153	1065	608	0	0	0	0	#REF!	#REF!	#REF!	#REF!
4	Number of Participants Taken to a Hospital Emergency Department:	5	130	138	175	37	19	#REF!	0	#REF!	#REF!	#REF!	#REF!
5													
6													
6		SJH	0	65	60	93	16	6	#REF!	0	#REF!	#REF!	#REF!
6		SNHMC	5	65	78	82	21	13	#REF!	0	#REF!	#REF!	#REF!
7	Percent of Participant Requiring Transport to Hospital ED:	10%	10%	11%	22%	19%	11%	#REF!	0%	#REF!	#REF!	#REF!	#REF!
8	Average Number of Minutes AMR / Fire Companies "Not Available":	14.3	11.1	9.1	9.7	9.3	8.1	#REF!	0.0	#REF!	#REF!	#REF!	9.8
9	Number of UNIQUE Participants to Nashua SafeStation:	45	814	754	532	146	124	1996	-1	-1	-1	-1	1996
10	Number of Repeat Participant visits to SafeStation:	15	673	709	178	122	131	#REF!	0	#REF!	#REF!	#REF!	#REF!
11	Gender Breakdown												
12		Male	31	905	868	219	153	149	#REF!	0	#REF!	#REF!	#REF!
12		Female	20	396	340	73	39	30	#REF!	0	#REF!	#REF!	#REF!
13	Number of Unique Participants Seen in both City's SafeStation Program:												572
14	Number of Unique Nashua Participants Who Overdosed Prior to Entry into SafeStation:												453
15	Number of Unique Nashua Participants Who Overdosed After Entry SafeStation:												215
16	Total Number of Nashua Participant Overdoses Prior to Entry into SafeStation:												818
17	Total Number of Nashua Participant Overdoses After Entry SafeStation:												537
18	Number of Fatal Overdoses after Patient Entered Nashua SafeStation:												23
	Station Summary												
19	Fire Alarm	3	62	43	30	6	10	0	#REF!	#REF!	#REF!	#REF!	#REF!
20	Station 1	21	457	470	319	100	93	0	#REF!	#REF!	#REF!	#REF!	#REF!
21	Station 2	2	236	193	103	20	14	0	#REF!	#REF!	#REF!	#REF!	#REF!
22	Station 3	0	32	28	16	0	8	0	#REF!	#REF!	#REF!	#REF!	#REF!
23	Station 4	24	470	443	305	64	53	0	#REF!	#REF!	#REF!	#REF!	#REF!
24	Station 5	1	27	16	12	1	1	0	#REF!	#REF!	#REF!	#REF!	#REF!
25	Station 6	0	17	16	3	1	0	0	#REF!	#REF!	#REF!	#REF!	#REF!
26					#REF!			0	#REF!	#REF!		#REF!	
27					#REF!			0	#REF!	#REF!		#REF!	
28					#REF!			0	#REF!	#REF!		#REF!	

1
2

*All fatality data is subject to NH Medical Examiner confirmation and as such, may change.

Nashua Opioid Crisis Summary

Communities Served By The Nashua SafeStation Program

Community	Count	Community	Count	Community	Count	Community	Count
Nashua, NH	1570	KEENE, NH	9	FARMINGTON, NH	4	Billerica, MA	2
Homeless	661	WINDHAM, NH	9	Greenville, NH	4	BRISTOL, NH	2
MANCHESTER, NH	314	JAFFREY, NH	9	BOSTON, MA	4	FITCHBURG, MA	2
HUDSON, NH	164	DEERFIELD, NH	8	EPPING, NH	4	BRONX, NY	2
MILFORD, NH	89	NORTHFIELD, NH	8	LANCASTER, NH	4	Melrose, MA	2
MERRIMACK, NH	54	ALLENSTOWN, NH	7	LAWRENCE, MA	4	NEW IPSWICH, MA	2
DERRY, NH	48	PLAISTOW, NH	7	Gilmanton, NH	4	MEREDITH, NH	2
ROCHESTER, NH	47	BEDFORD, NH	7	Winthrop, MA	3	TEWKSBURY, MA	2
CONCORD, NH	33	GOFFSTOWN, NH	7	WOLFEBORO, NH	3	DALTON, NH	2
LACONIA, NH	32	SOMERSWORTH, NH	7	KINGSTON, NH	3	BARRINGTON, NH	2
LITCHFIELD, NH	29	LITTLETON, NH	7	HANCOCK, NH	3	EXETER, NH	2
LONDONDERRY, NH	25	PLYMOUTH, NH	7	Westford, MA	3	AUBURN, NH	2
SALEM, NH	22	SANBORNTON, NH	6	LINCOLN, NH	3	WHITEFIELD, NH	2
PELHAM, NH	20	BOSCAWEN, NH	6	CAMPTON, NH	3	East Hampstead, NH	2
FRANKLIN, NH	17	PORTSMOUTH, NH	6	NEW BOSTON, NH	3	CANTERBURY, NH	2
DOVER, NH	17	ALTON, NH	6	EPSOM, NH	3	East Hampsted, NH	2
WILTON, NH	15	Chester, NH	5	DRACUT, MA	3	WINCHESTER, NH	2
HOLLIS, NH	15	Pepperell, MA	5	New Market, NH	3	Penacook, NH	2
BERLIN, NH	15	HAVERHILL, MA	5	NEWTON, NH	3	BRENTWOOD, NH	2
BROOKLINE, NH	14	CONWAY, NH	5	PEMBROOK, NH	3	TROY, NH	2
AMHERST, NH	14	DUNBARTON, NH	5	NORTH HAVERHILL, NH	3	Machester, NH	1
TILTON, NH	12	SANDOWN, NH	5	Rindge, NH	3	Gloucester, MA	1
NEW IPSWICH, NH	12	HAMPTON, NH	5	RAYMOND, NH	3	Winchendon, MA	1
Unknown	11	BELMONT, NH	5	WORCESTER, MA	2	QUINCY, MA	1
DURHAM, NH	11	CLAREMONT, NH	5	LUNENBURG, MA	2	CHARLESTOWN, NH	1
LOWELL, MA	11	PEMBROKE, NH	5	FREMONT, NH	2	BENNINGTON, NH	1
GREENFIELD, NH	10	TEMPLE, NH	5	ATKINSON, NH	2	Winchester, MA	1
GILFORD, NH	10	HAMPSTEAD, NH	4	Woburn, MA	2	MILTON, NH	1
HOOKSETT, NH	10	PETERBOROUGH, NH	4	PITTSFIELD, NH	2	Unknown, MT	1
OSSIPEE, NH	10	Tyngsboro, MA	4	LEBANON, ME	2	Berkley, MA	1

*All fatality data is subject to NH Medical Examiner confirmation and as such, may change.