



Monthly Data Dashboard

January 2024

About this Data:

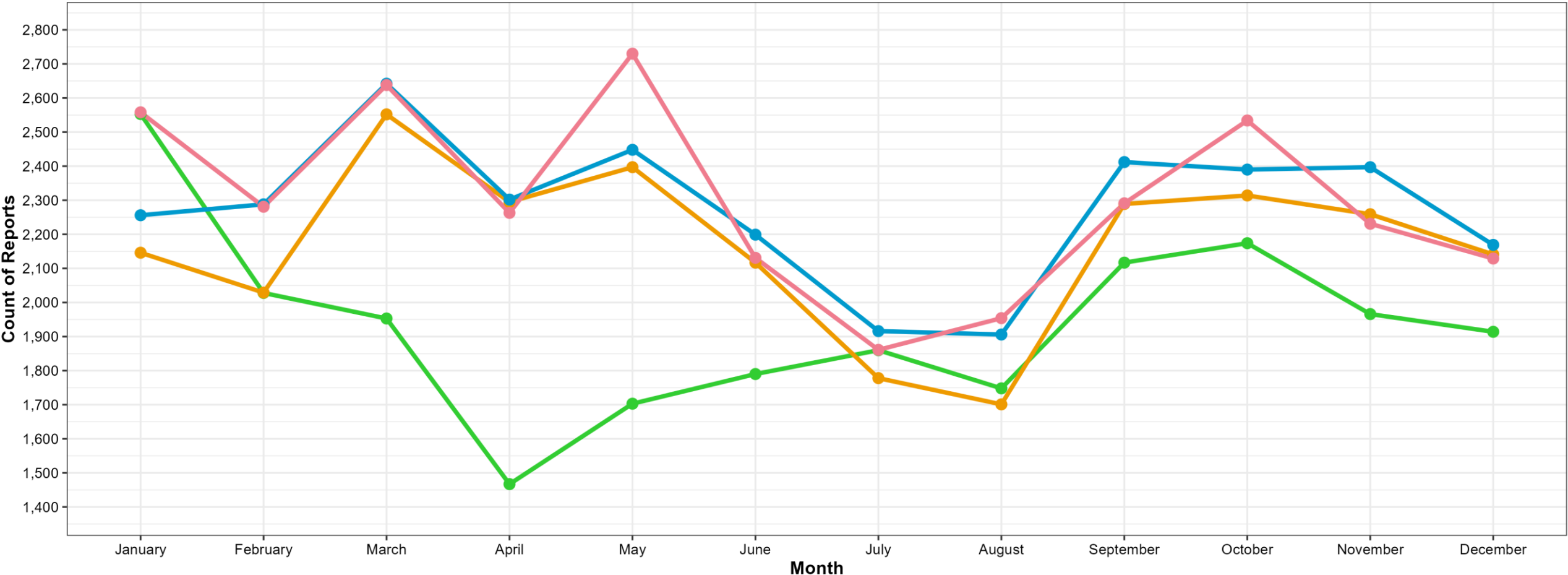
- Data reported throughout this book has been extracted from the New Hampshire statewide automated child welfare information system (SACWIS) known as Bridges.
- The data cannot be generalized given the multiple processes used to query the data and the complexity of the measures.
- Some of the underlying data is based on service authorizations which may take additional time to process. Accordingly, some data is withheld for an additional month to improve accuracy.
- All data in these monthly reports should be understood as preliminary as it is being extracted from a live case management system and will improve in accuracy over time as information is documented in individual cases. For this reason, please consider the annualized data reported in the annual DCYF Data Book as the most accurate source for identifying and following longer term trends.

• <https://www.dhhs.nh.gov/sites/g/files/ehbemt476/files/documents2/dcyf-data-book-2022.pdf>



Child Protection: Reports To Central Intake

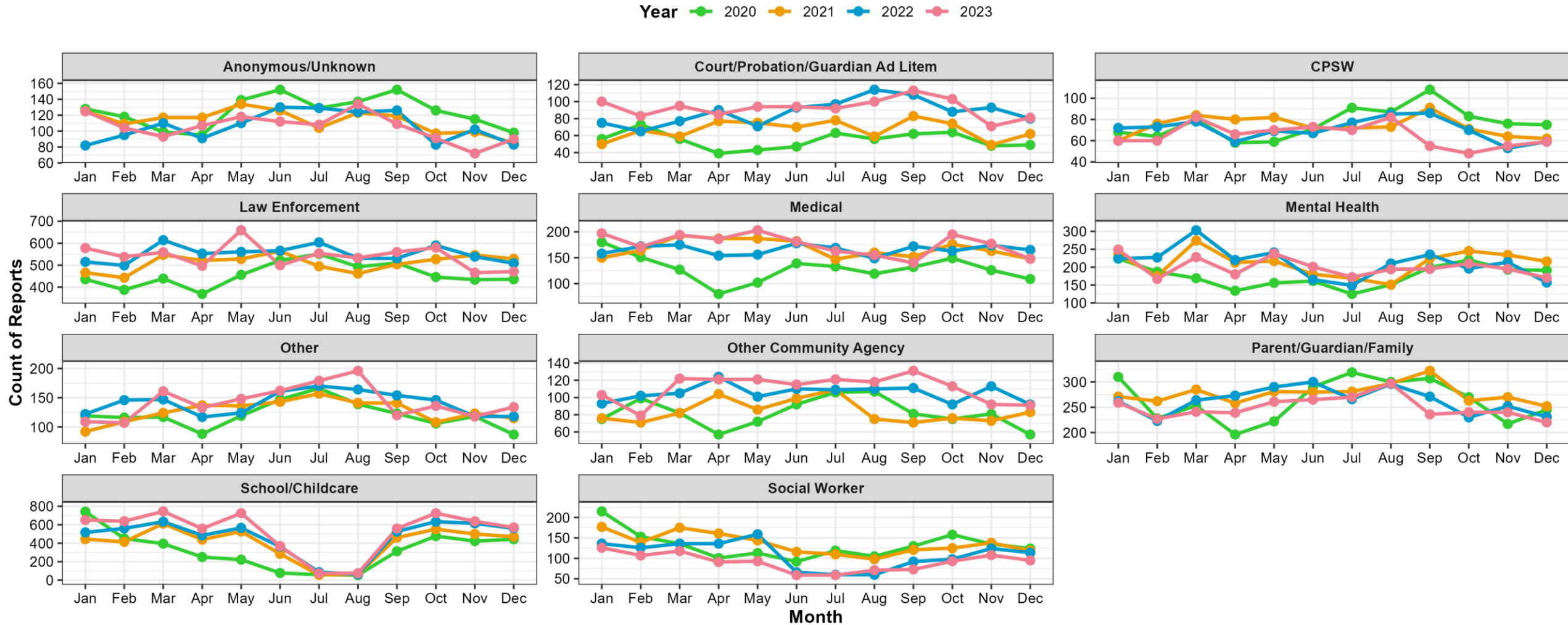
Year 2020 2021 2022 2023



Extracted from Bridges (NH SACWIS) on 01/08/2024



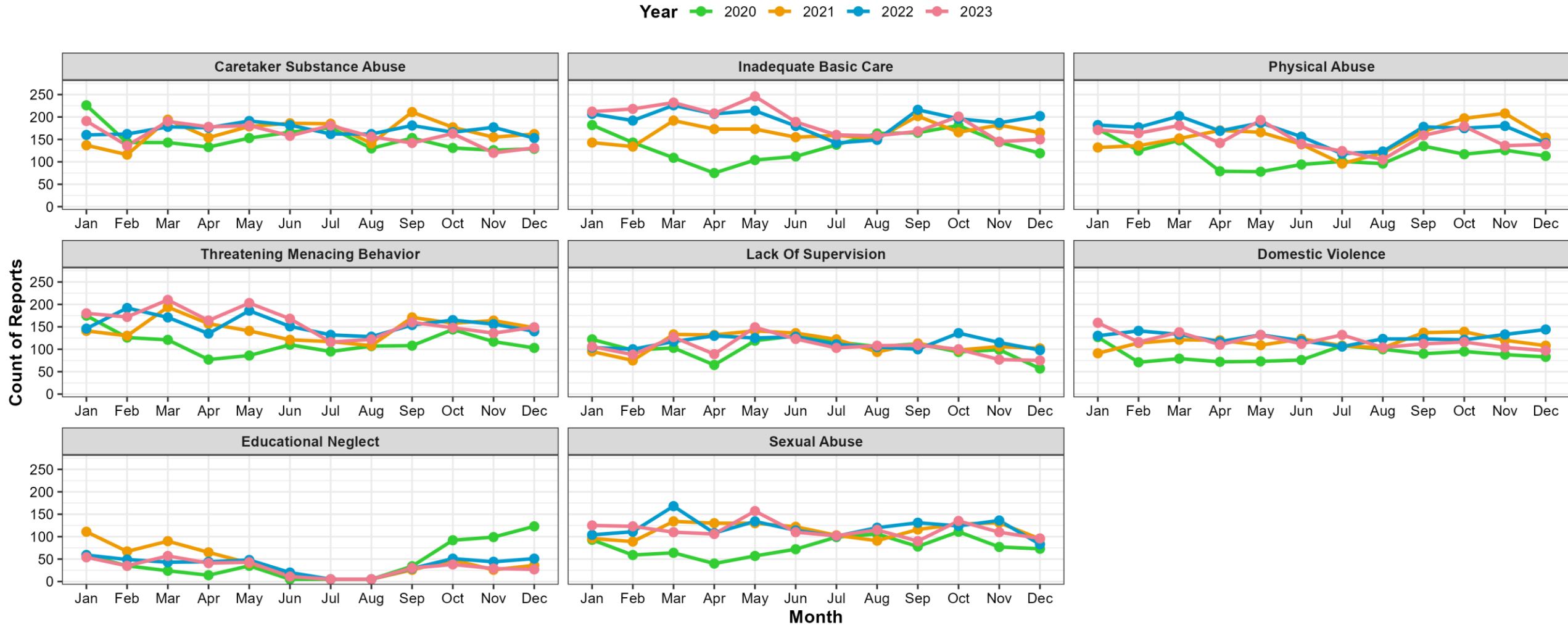
Child Protection: Referrals by Reporter Type



Extracted from Bridges (NH SACWIS) on 01/08/2024



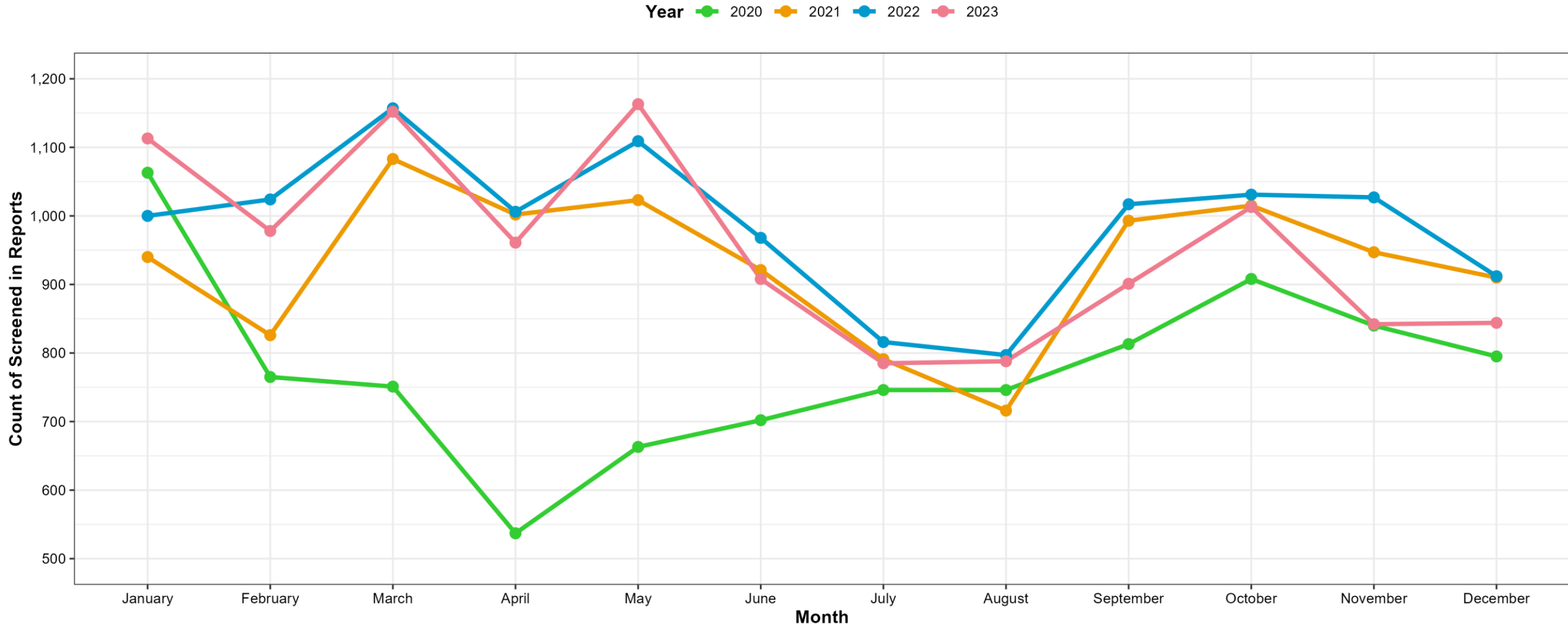
Child Protection: Allegation Types



Extracted from Bridges (NH SACWIS) on 01/08/2024



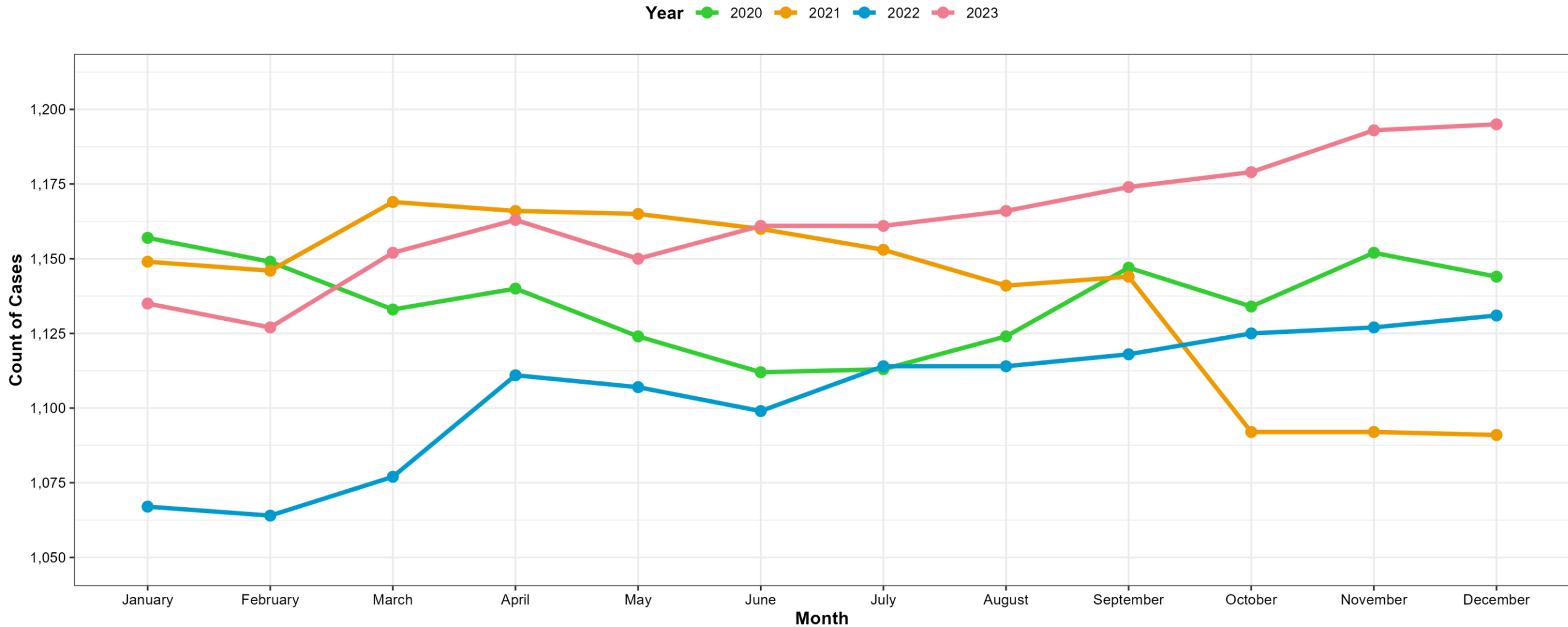
Child Protection: Screened In Referrals



Extracted from Bridges (NH SACWIS) on 01/08/2024



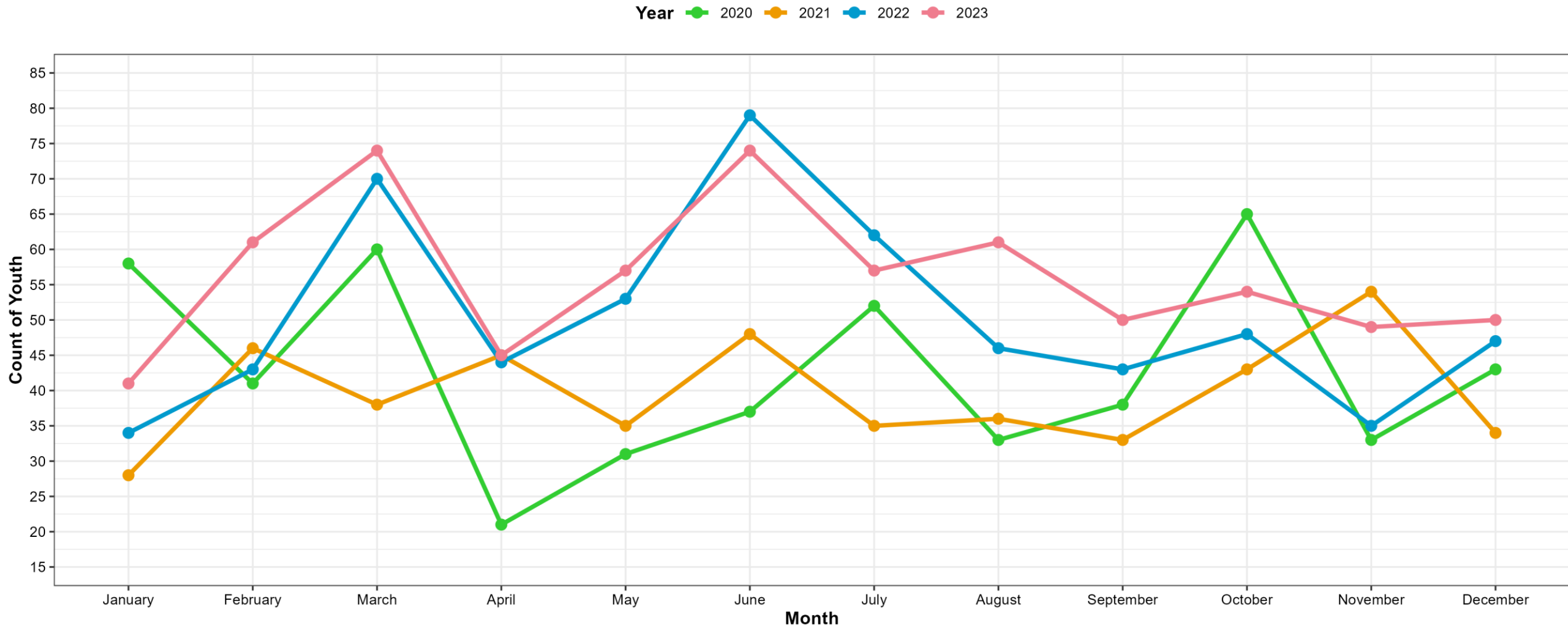
Child Protection: Open Family Service Cases



Extracted from Bridges (NH SACWIS) on 01/08/2024



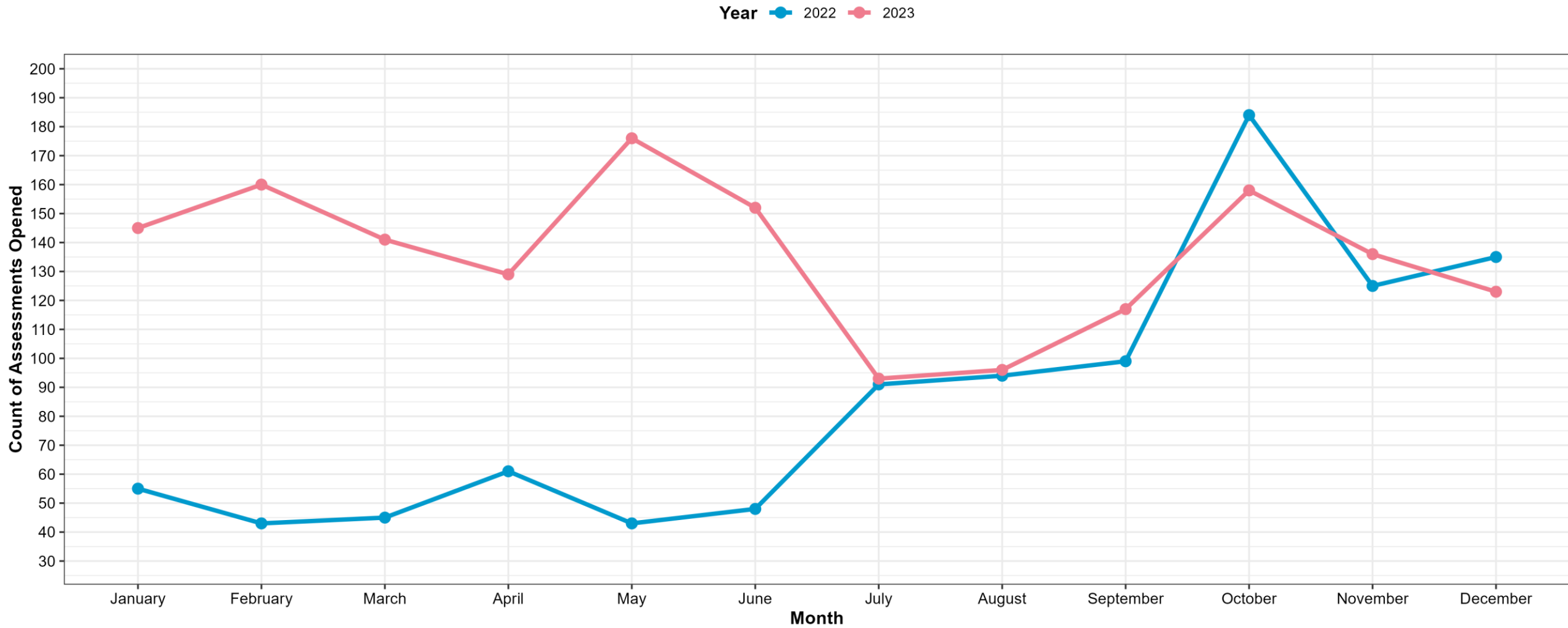
Child Protection: Youth Entering Out of Home Care



Extracted from Bridges (NH SACWIS) on 01/08/2024



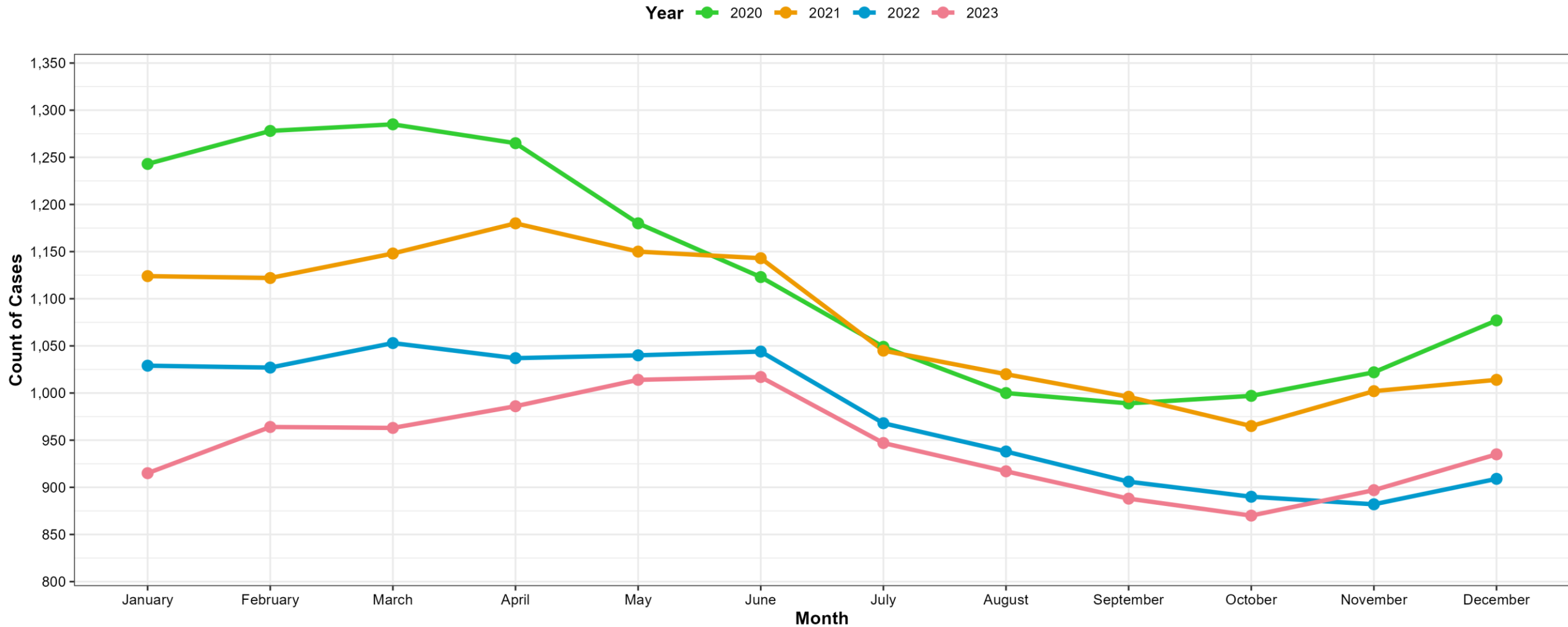
Juvenile Justice: Assessments Opened



Extracted from Bridges (NH SACWIS) on 01/08/2024



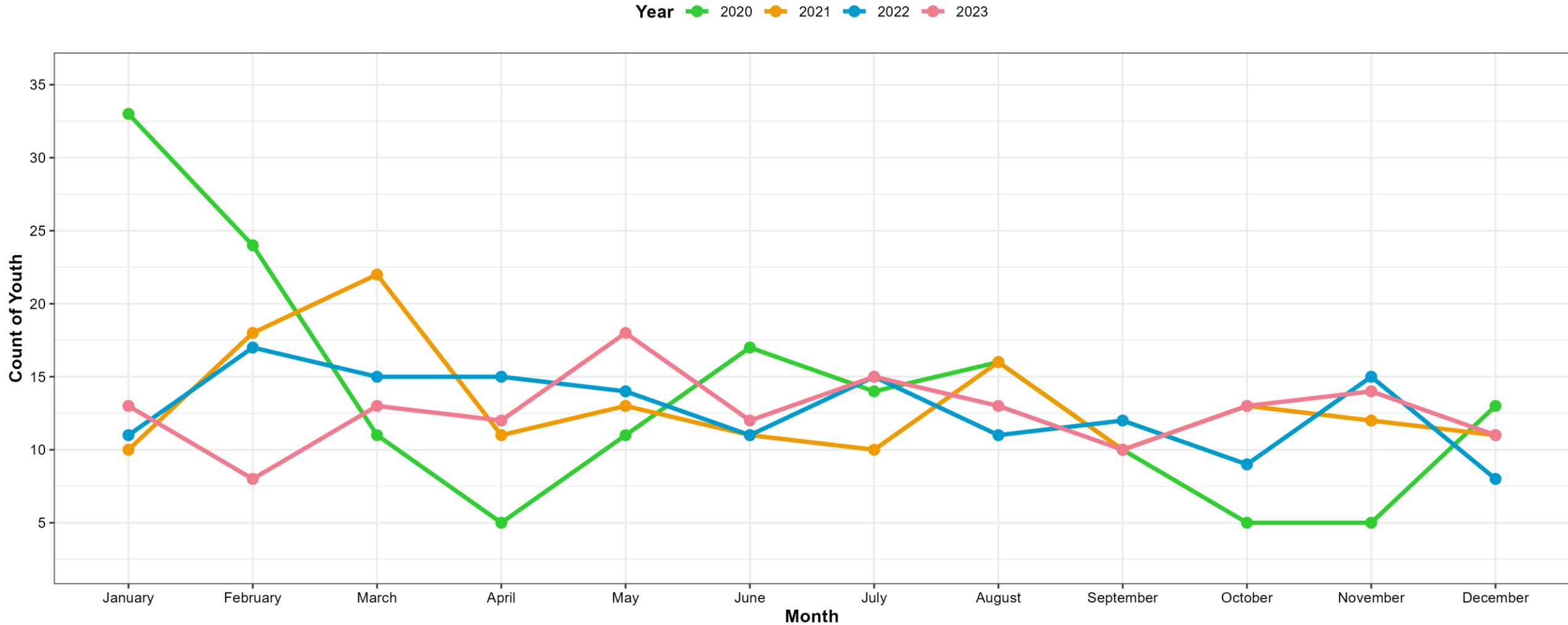
Juvenile Justice: Open Cases



Extracted from Bridges (NH SACWIS) on 01/08/2024



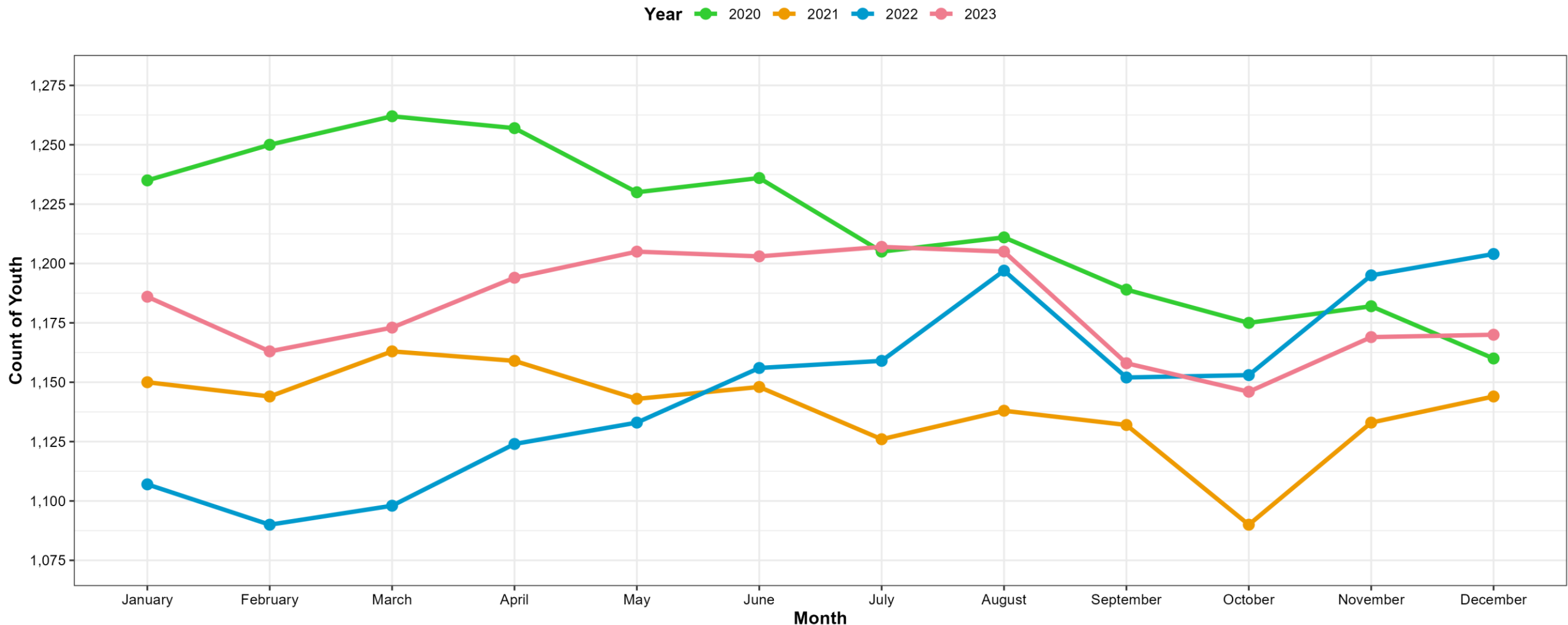
Juvenile Justice: Youth Entering Out of Home Care



Extracted from Bridges (NH SACWIS) on 01/08/2024



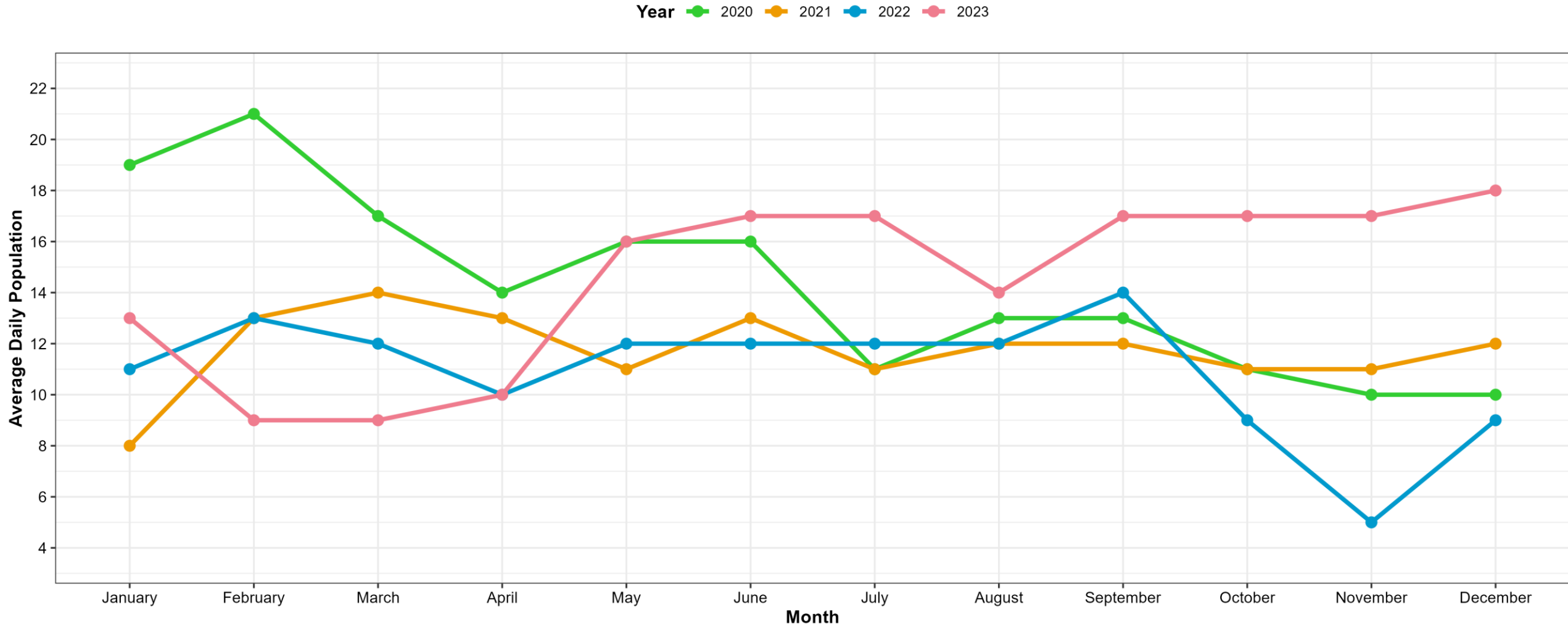
Child Protection & Juvenile Justice: Youth in Out of Home Care



Extracted from Bridges (NH SACWIS) on 01/08/2024



SYSC Population Census



Extracted from Bridges (NH SACWIS) on 01/08/2024

