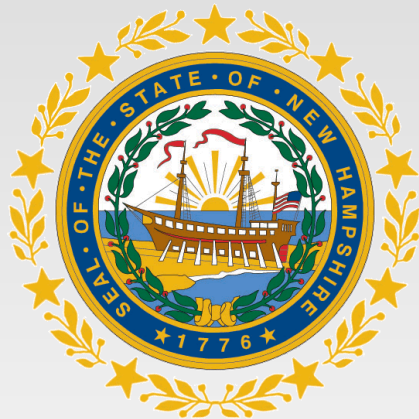


**State of New Hampshire
Department of Health and Human Services**

Monthly Data Dashboard

February 2023

Division for Children, Youth and Families



About this Data:

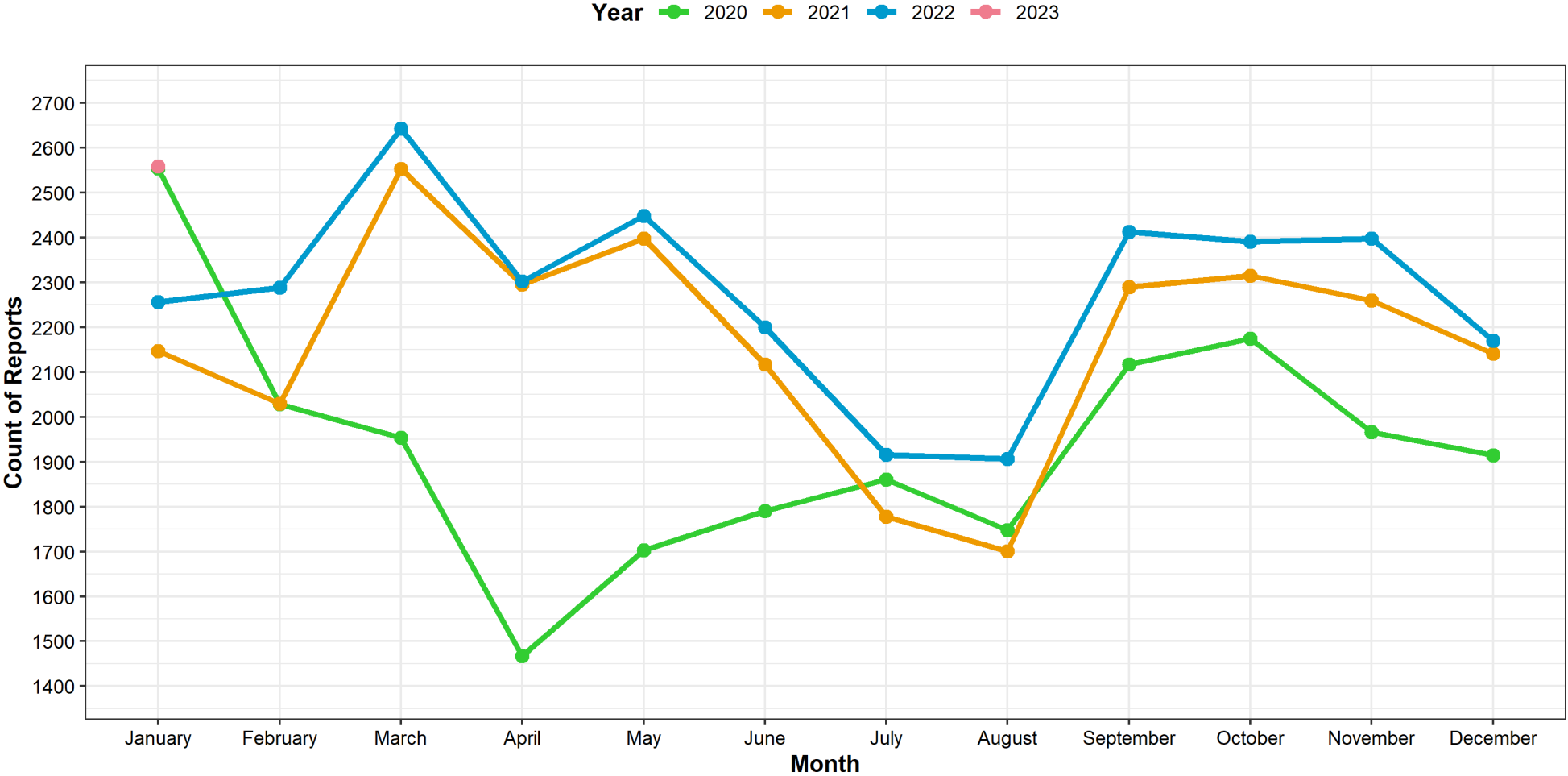
- Data reported throughout this book has been extracted from the New Hampshire statewide automated child welfare information system (SACWIS) known as Bridges.
- The data cannot be generalized given the multiple processes used to query the data and the complexity of the measures.
- Some of the underlying data is based on service authorizations which may take additional time to process. Accordingly, some data is withheld for an additional month to improve accuracy.
- All data in these monthly reports should be understood as preliminary as it is being extracted from a live case management system and will improve in accuracy over time as information is documented in individual cases. For this reason, please consider the annualized data reported in the annual DCYF Data Book as the most accurate source for identifying and following longer term trends.

<https://www.dhhs.nh.gov/dcyf/documents/dcyf-data-book-2020.pdf>



Child Protection Intake- Reports to Central Intake

Child Protection: Reports To Central Intake
Comparing 2020 - 2023

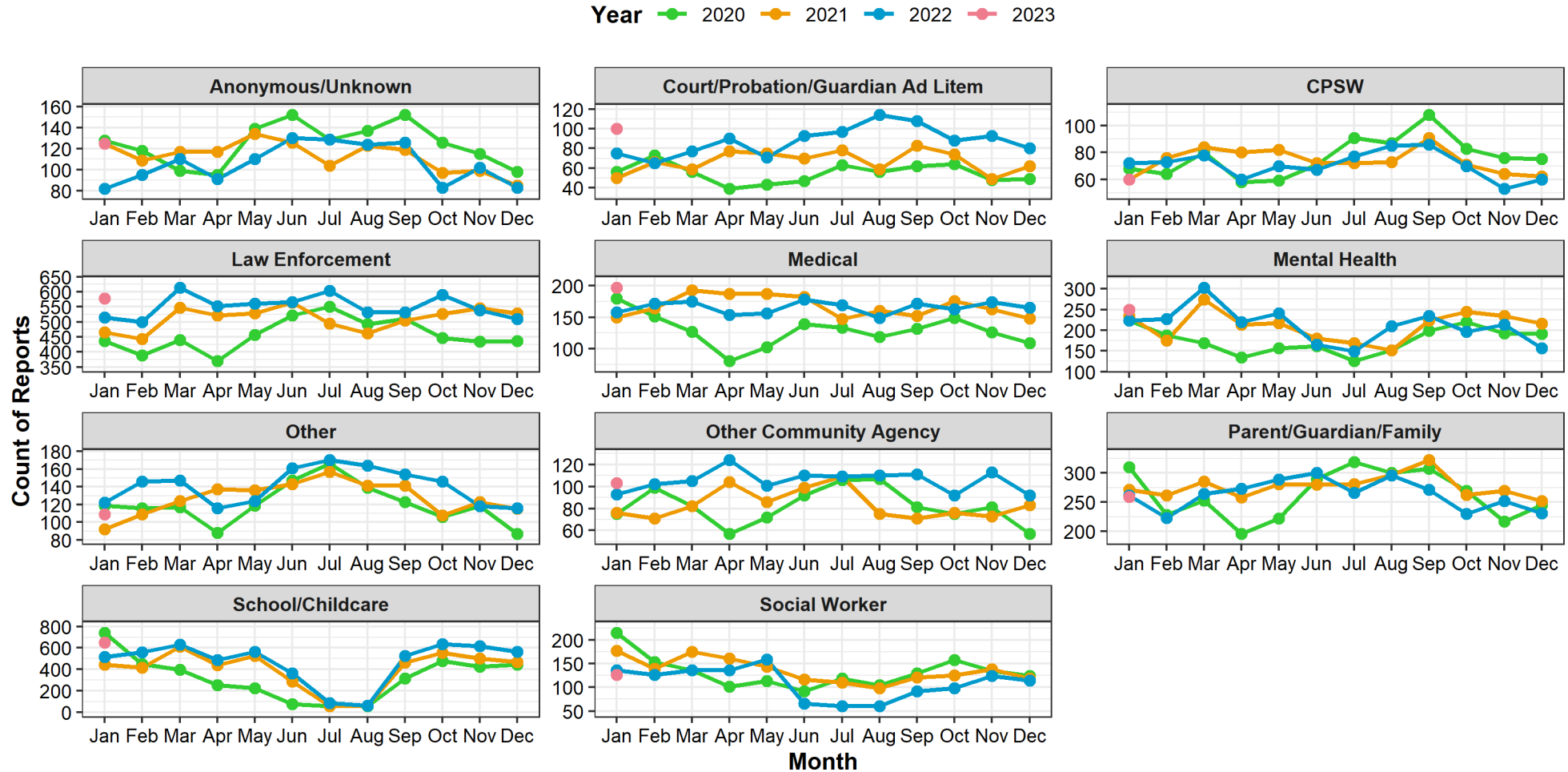


Extracted from Bridges (NH SACWIS) on 02/07/2023



Child Protection Intake-Referrals by Common Reporter Types

Child Protection: Trends in Referrals by Reporter Type
Comparing 2020 - 2023

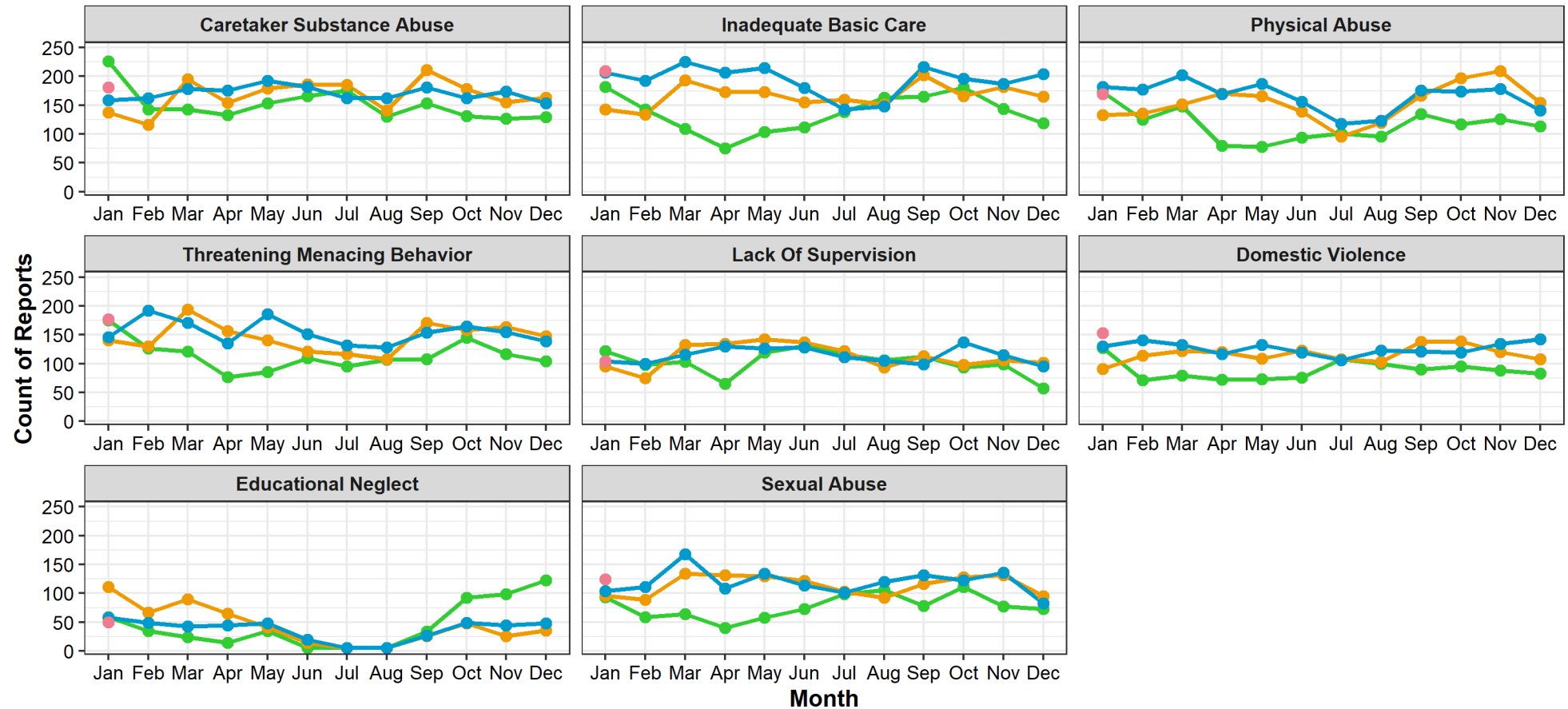


Child Protection Intake- Allegation Types in Referrals

Child Protection: Trends in Allegations

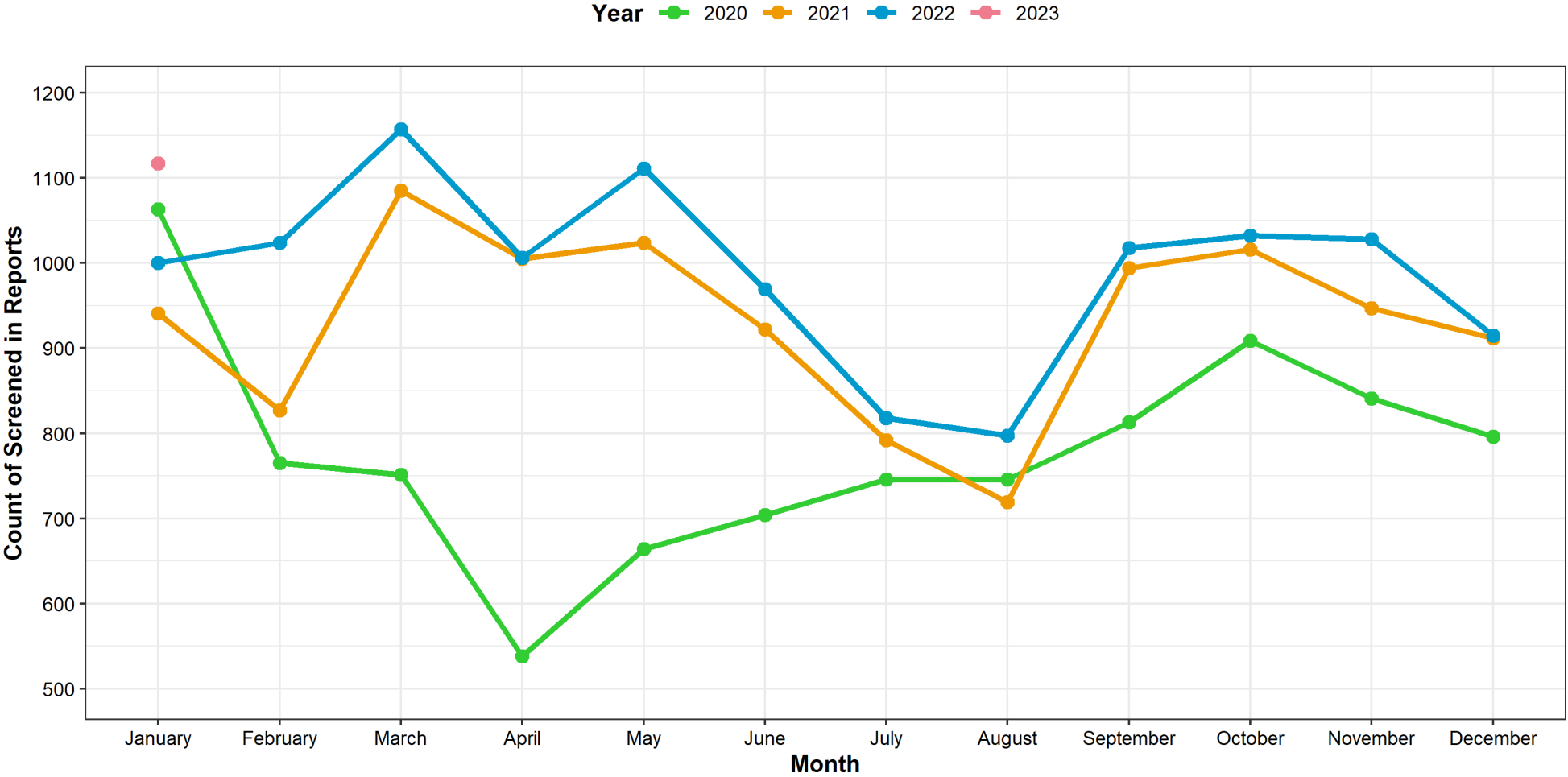
Comparing 2020 - 2023 | Count of Screen Ins With at Least One Occurrence of Allegation

Year ● 2020 ● 2021 ● 2022 ● 2023



Child Protection Intake- Screened-in Referrals

Child Protection: Screened In Referrals (accepted for further assessment)
Comparing 2020 - 2023



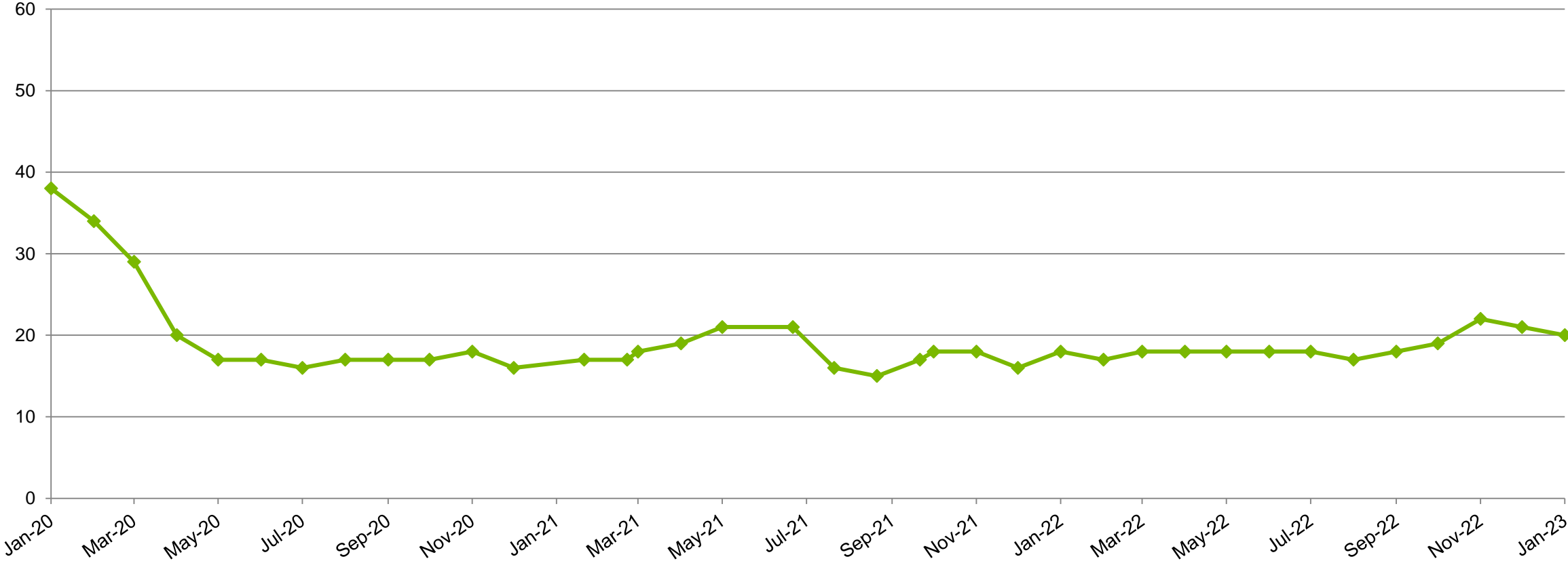
Extracted from Bridges (NH SACWIS) on 02/07/2023



Child Protection Workforce Capacity- Assessment

Average Assessments Assigned Per CPSW 2020-2023 (Last day of Month)

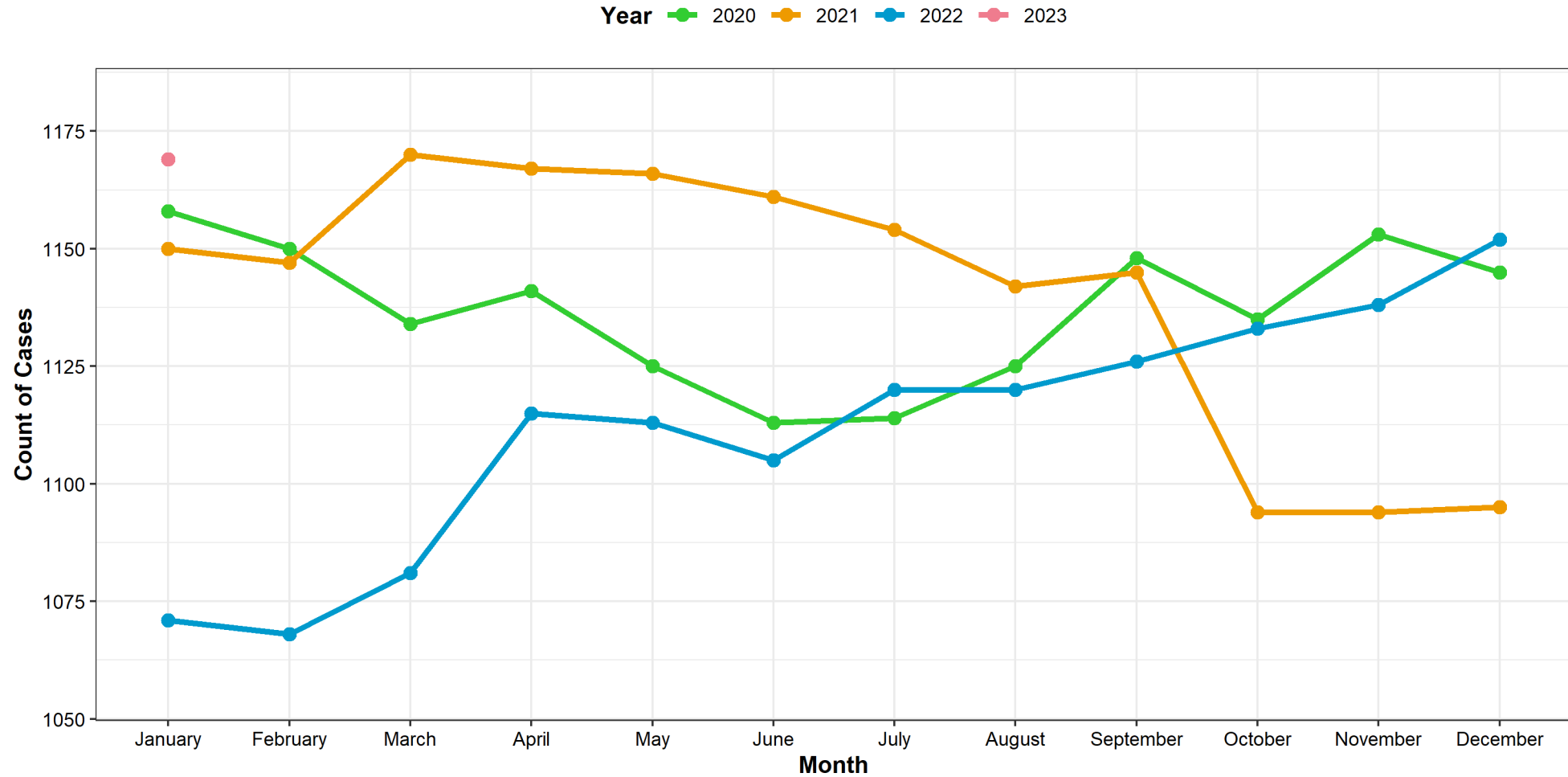
Assessment



Child Protection – Open Family Service Cases

Child Protection: Case Counts

Comparing Active Cases on the First of the Month: 2020 - 2023

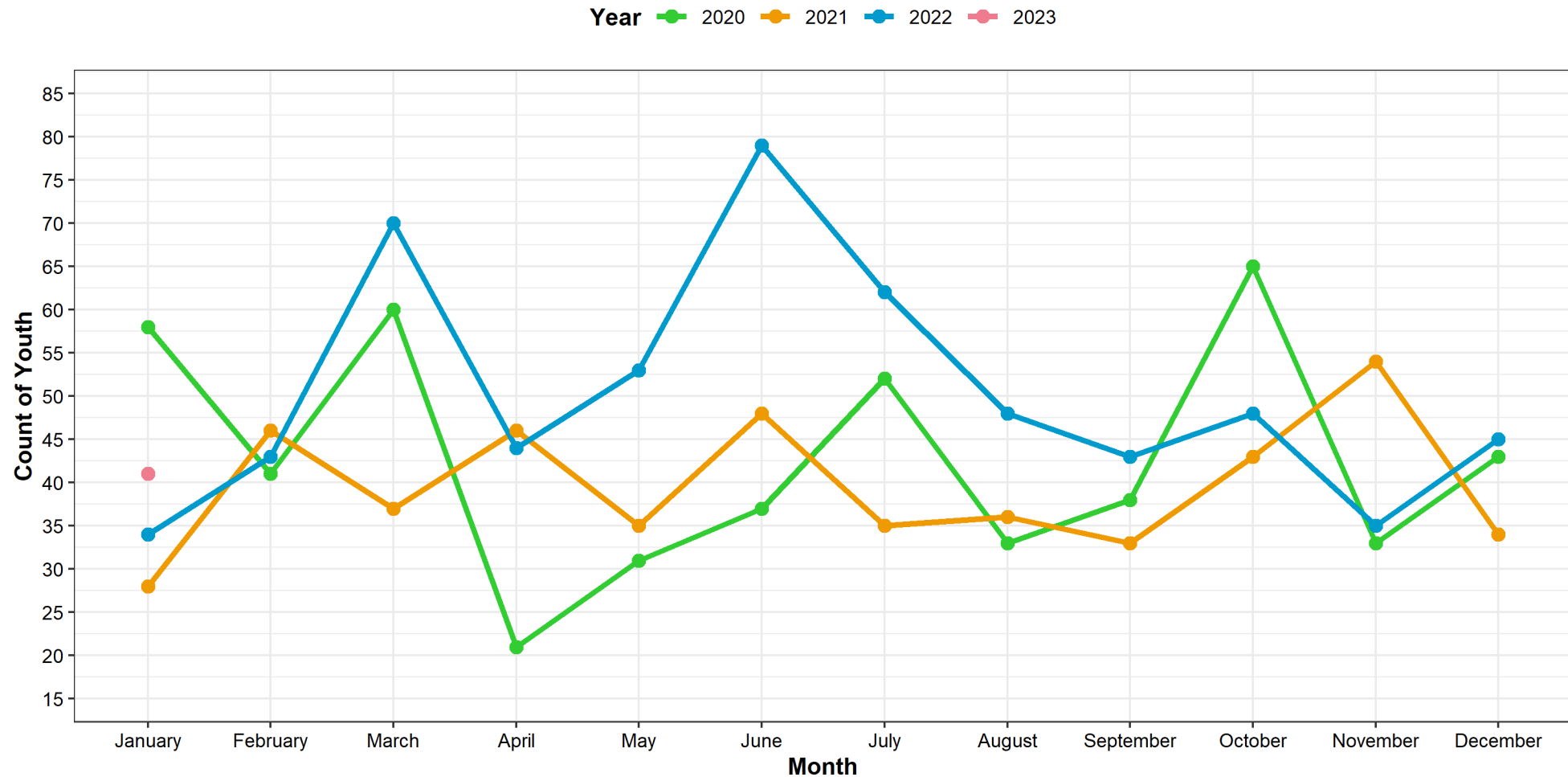


Extracted from Bridges (NH SACWIS) on 02/07/2023



Child Protection – Children & Youth Entering Out of Home Care

Child Protection: Trends In Removals
Comparing 2020 - 2023

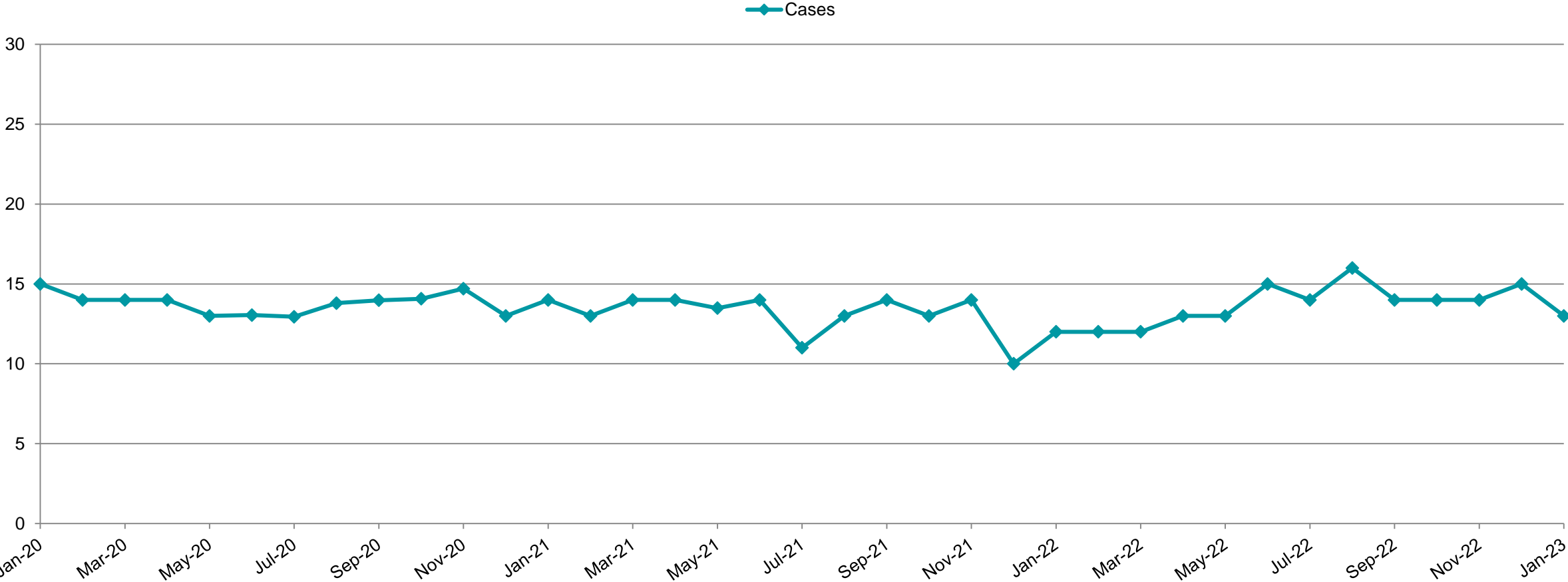


Extracted from Bridges (NH SACWIS) on 02/07/2023



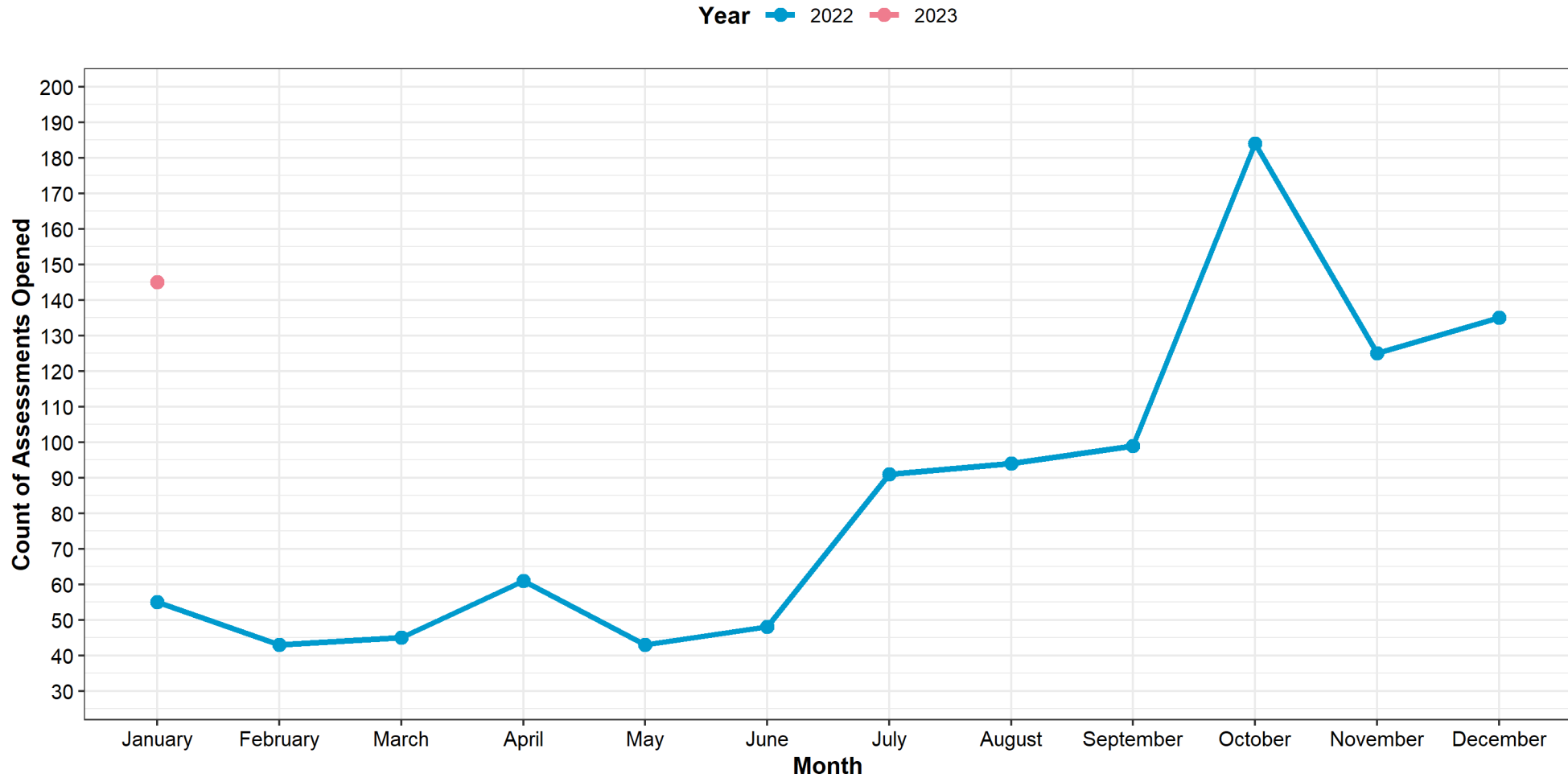
Child Protection Workforce Capacity- Family Service

Average Number of Cases Assigned per CPSW (Last day of the Month, 2020-2023)



Juvenile Justice – Assessments Opened

Juvenile Justices: Trends In JJ Assessments
Comparing 2022 - 2023



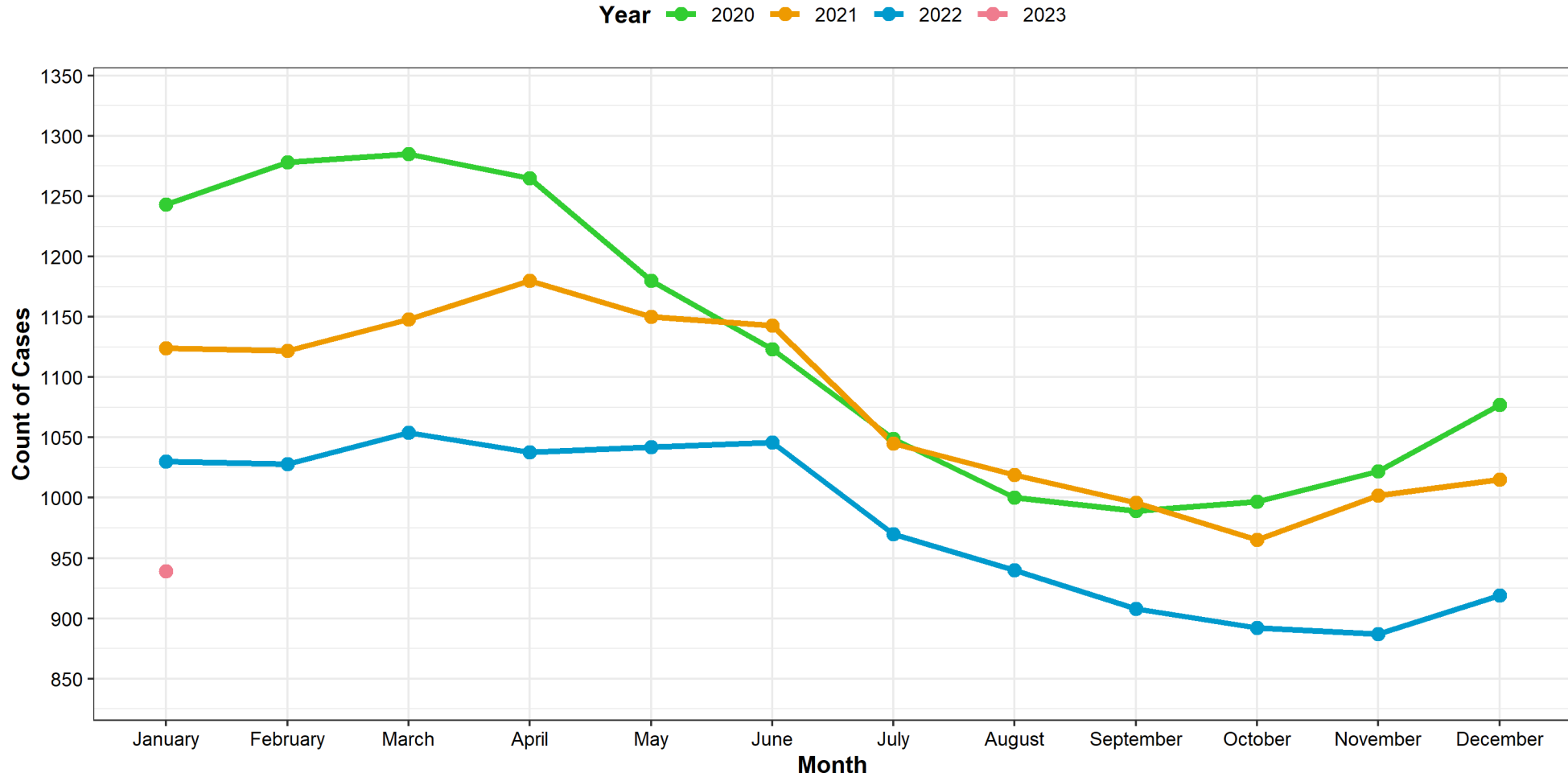
Extracted from Bridges (NH SACWIS) on 02/07/2023



Juvenile Justice – Open Cases

Juvenile Justice: Case Counts

Comparing Active Cases on the First of the Month: 2020 - 2023

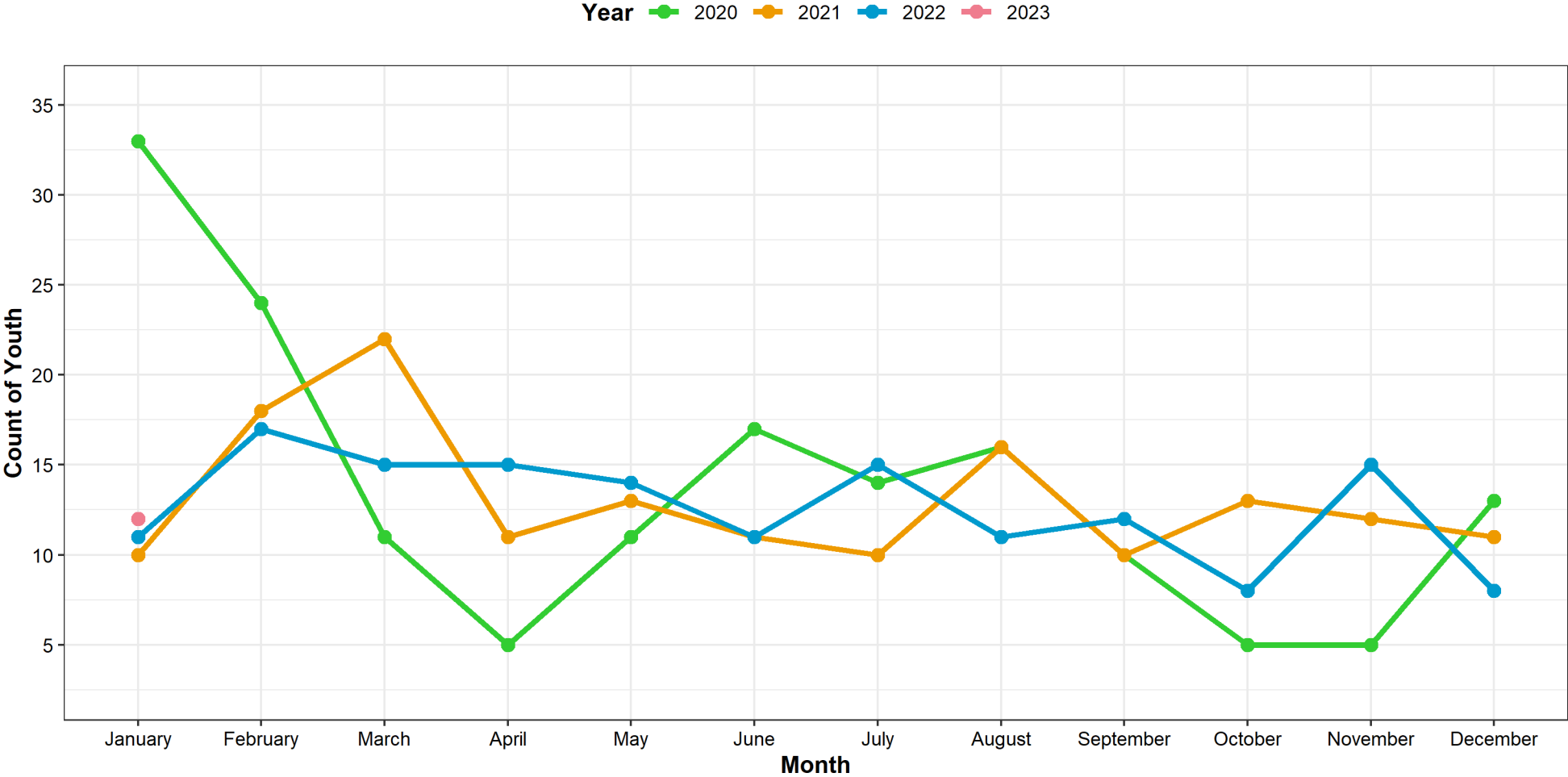


Extracted from Bridges (NH SACWIS) on 02/07/2023



Juvenile Justice – Youth Entering Out of Home Care

Juvenile Justice: Trends In Removals
Comparing 2020 - 2023

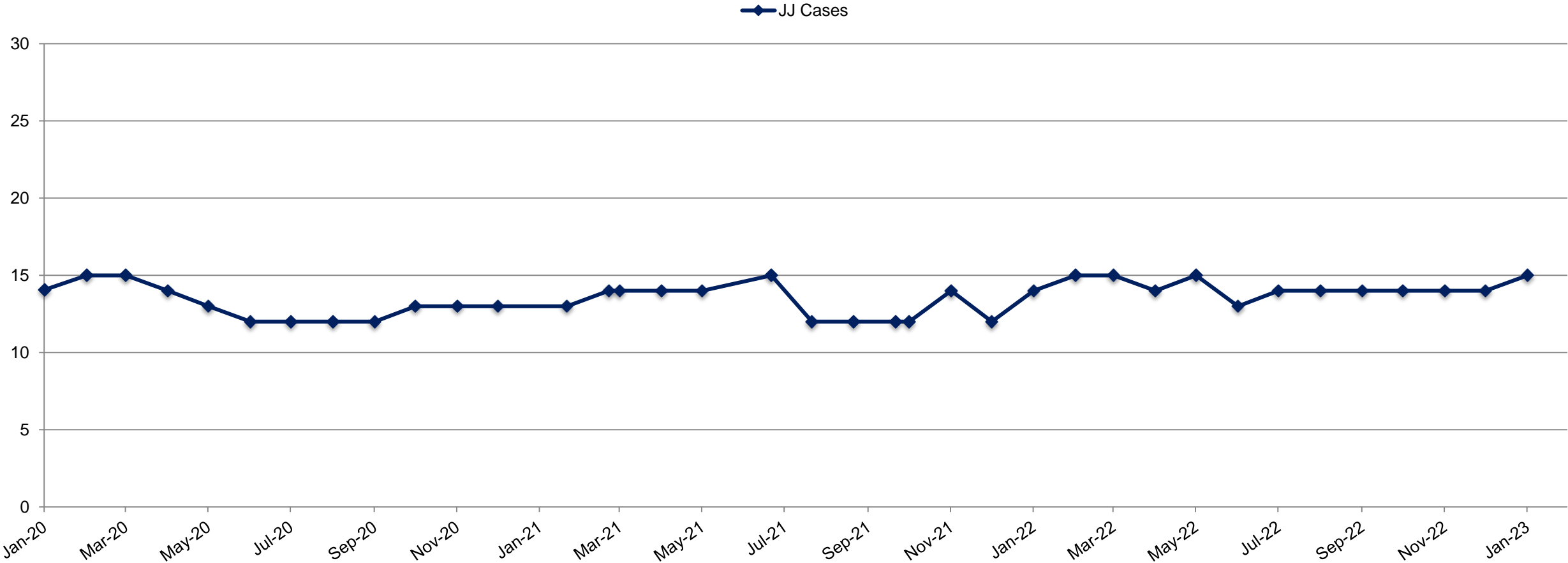


Extracted from Bridges (NH SACWIS) on 02/07/2023



Workforce Capacity - Juvenile Justice

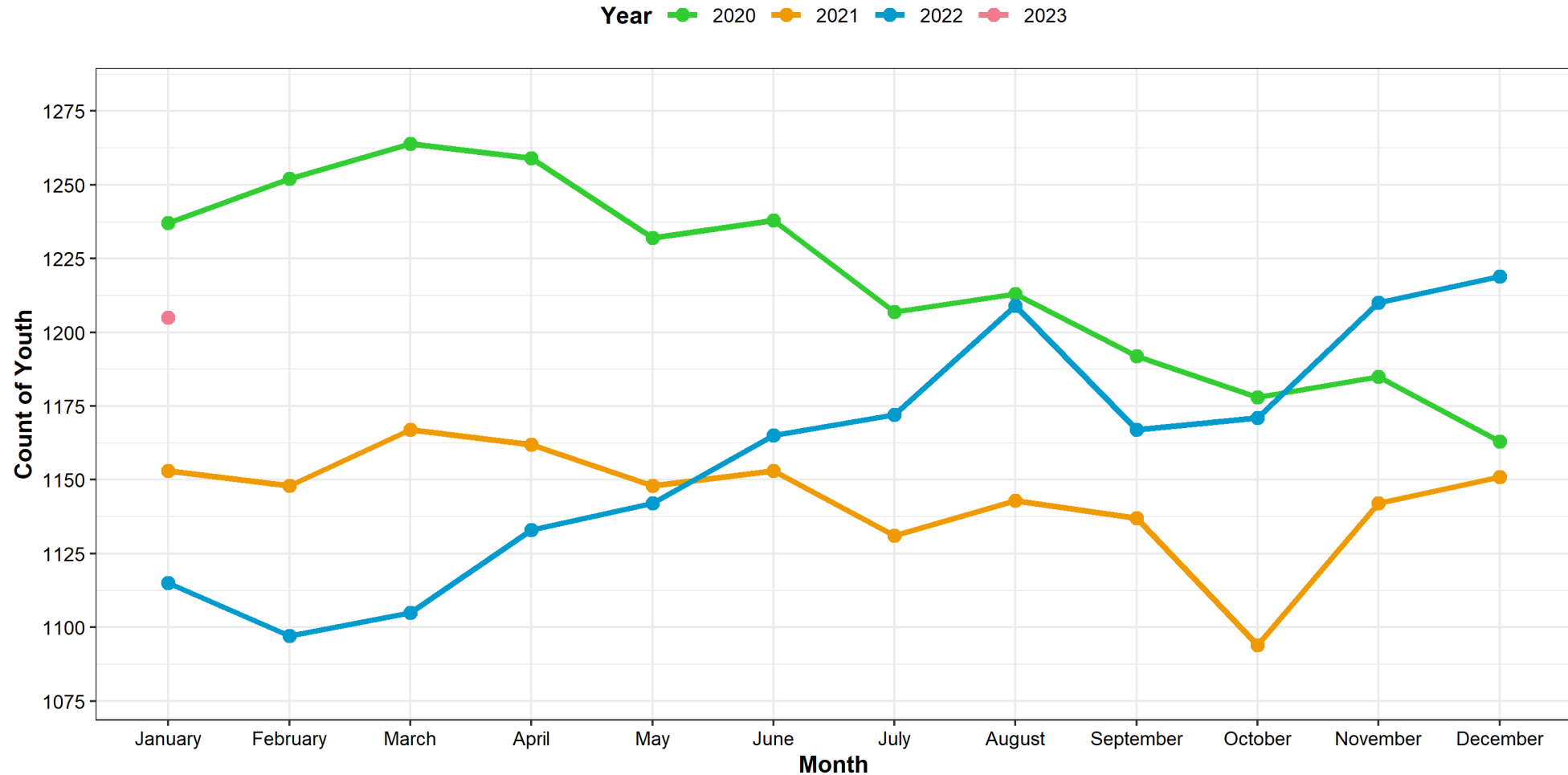
Adjusted Average # of Cases per JPPO (Last Day of Month, 2020-2023)



Child Protection & Juvenile Justice - Children & Youth in Out of Home Care

DCYF Placement Counts

CPS and JJS Combined: Count of Youth in Placement on the First of the Month: 2020 - 2023



Extracted from Bridges (NH SACWIS) on 02/07/2023



SYSC Total Population

