



# Monthly Data Dashboard

---

February 2023

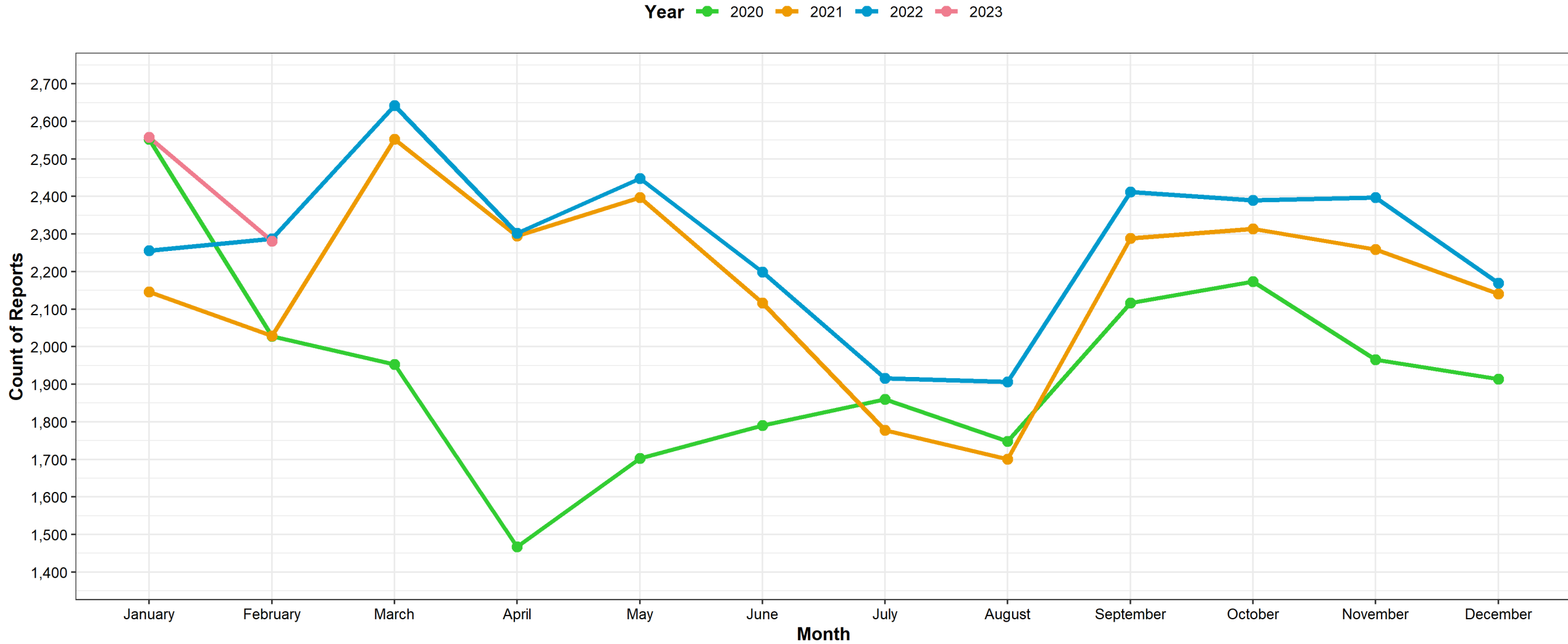
# About this Data:

- Data reported throughout this book has been extracted from the New Hampshire statewide automated child welfare information system (SACWIS) known as Bridges.
- The data cannot be generalized given the multiple processes used to query the data and the complexity of the measures.
- Some of the underlying data is based on service authorizations which may take additional time to process. Accordingly, some data is withheld for an additional month to improve accuracy.
- All data in these monthly reports should be understood as preliminary as it is being extracted from a live case management system and will improve in accuracy over time as information is documented in individual cases. For this reason, please consider the annualized data reported in the annual DCYF Data Book as the most accurate source for identifying and following longer term trends.

• <https://www.dhhs.nh.gov/dcyf/documents/dcyf-data-book-2020.pdf>



# Child Protection: Reports To Central Intake

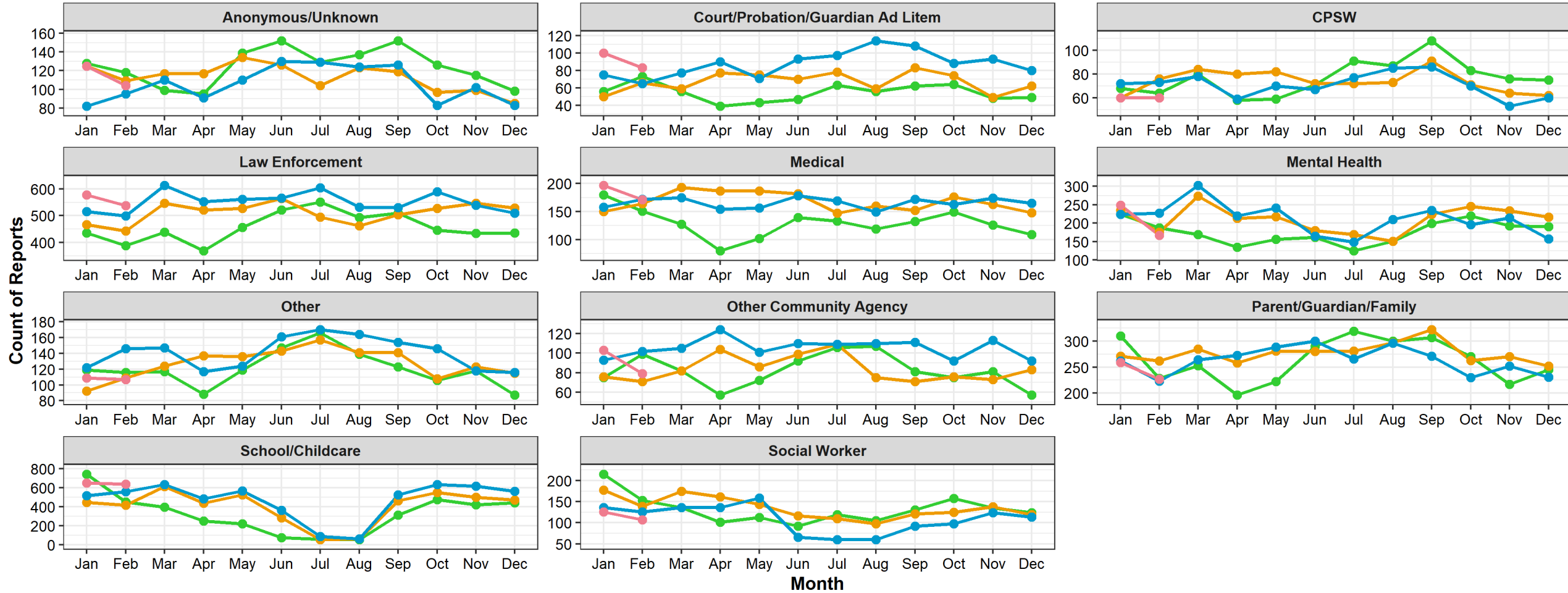


Extracted from Bridges (NH SACWIS) on 03/16/2023



# Child Protection: Referrals by Reporter Type

Year ● 2020 ● 2021 ● 2022 ● 2023

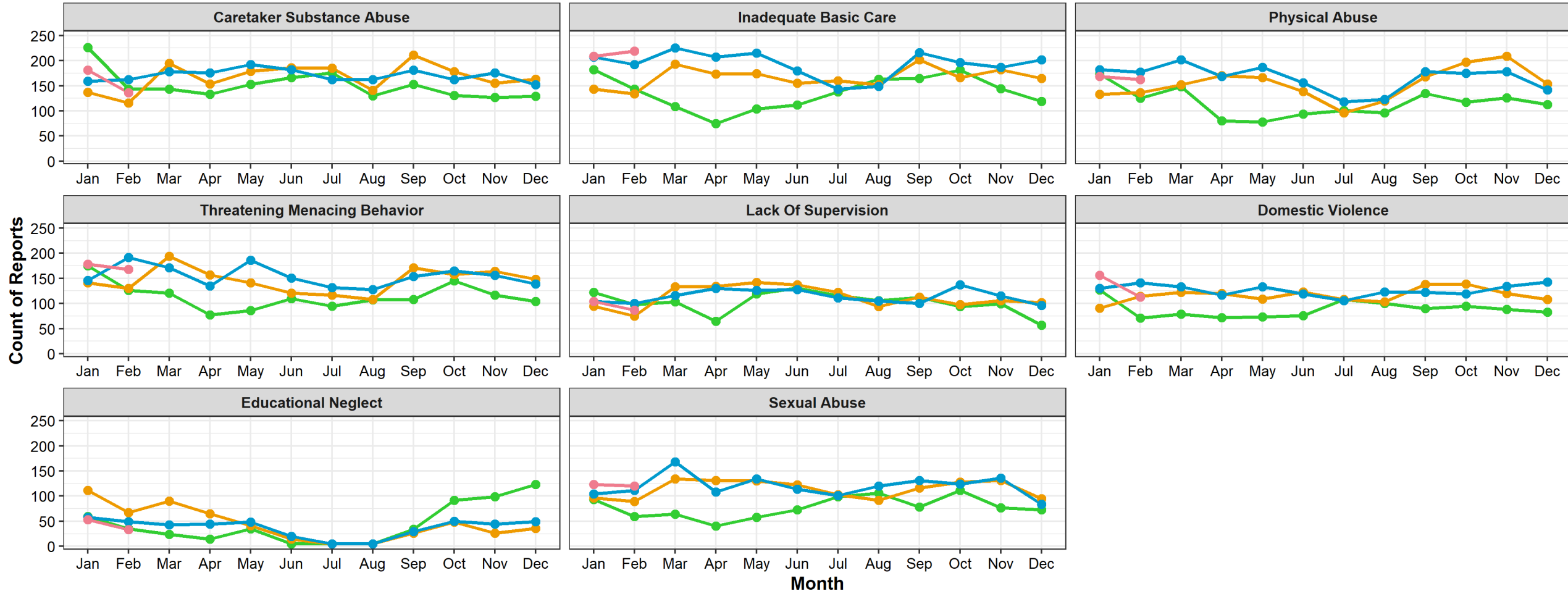


Extracted from Bridges (NH SACWIS) on 03/16/2023



# Child Protection: Allegation Types

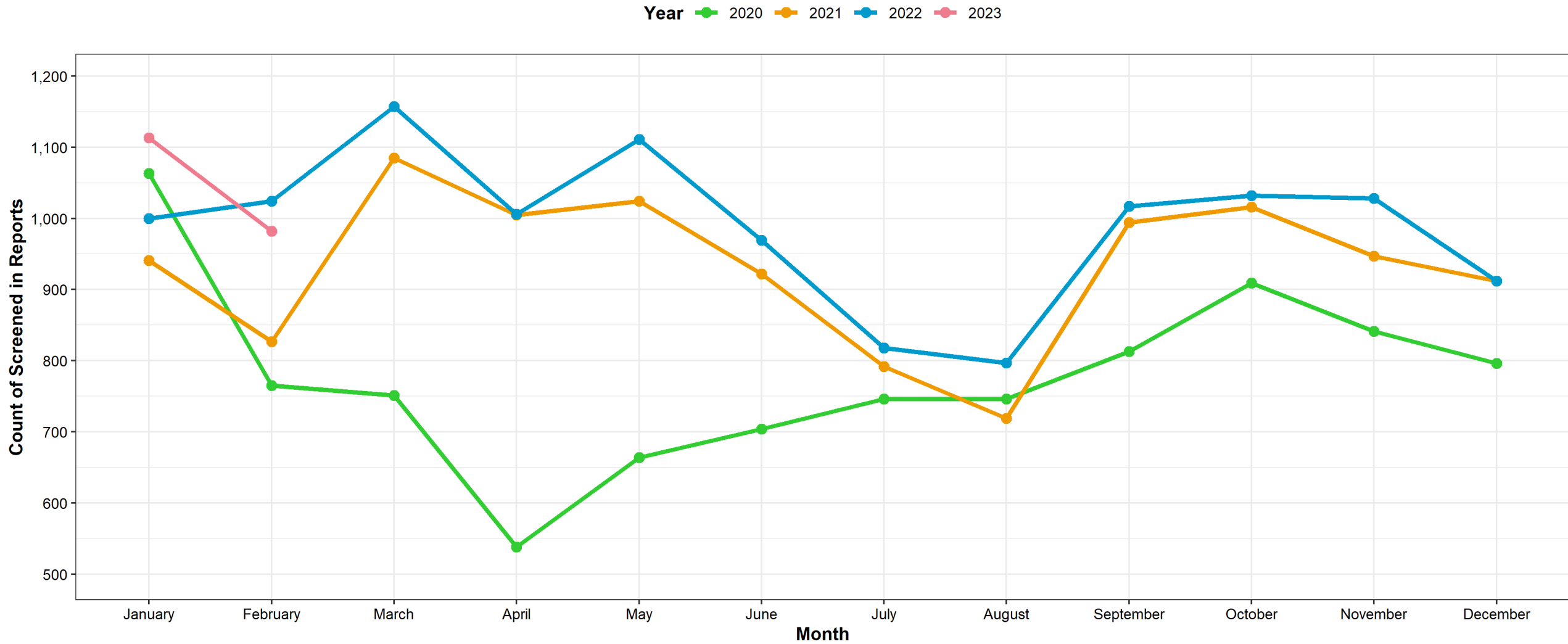
Year ● 2020 ● 2021 ● 2022 ● 2023



Extracted from Bridges (NH SACWIS) on 03/16/2023



# Child Protection: Screened In Referrals



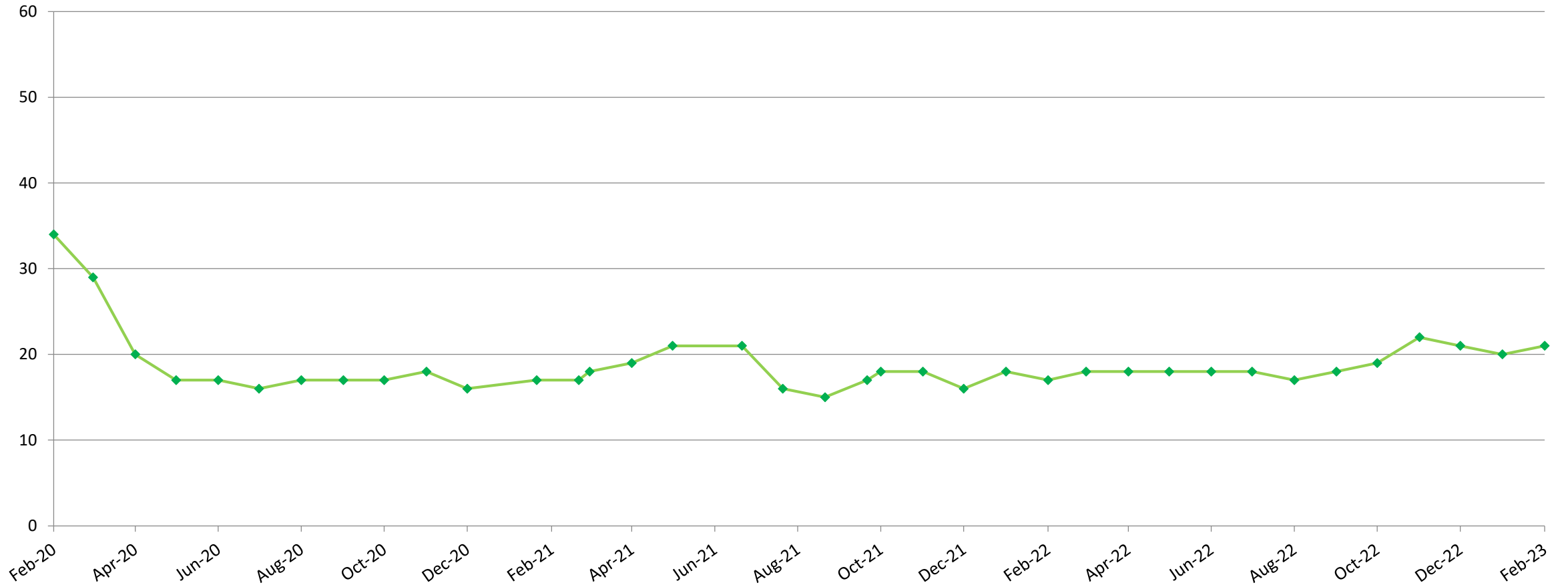
Extracted from Bridges (NH SACWIS) on 03/16/2023



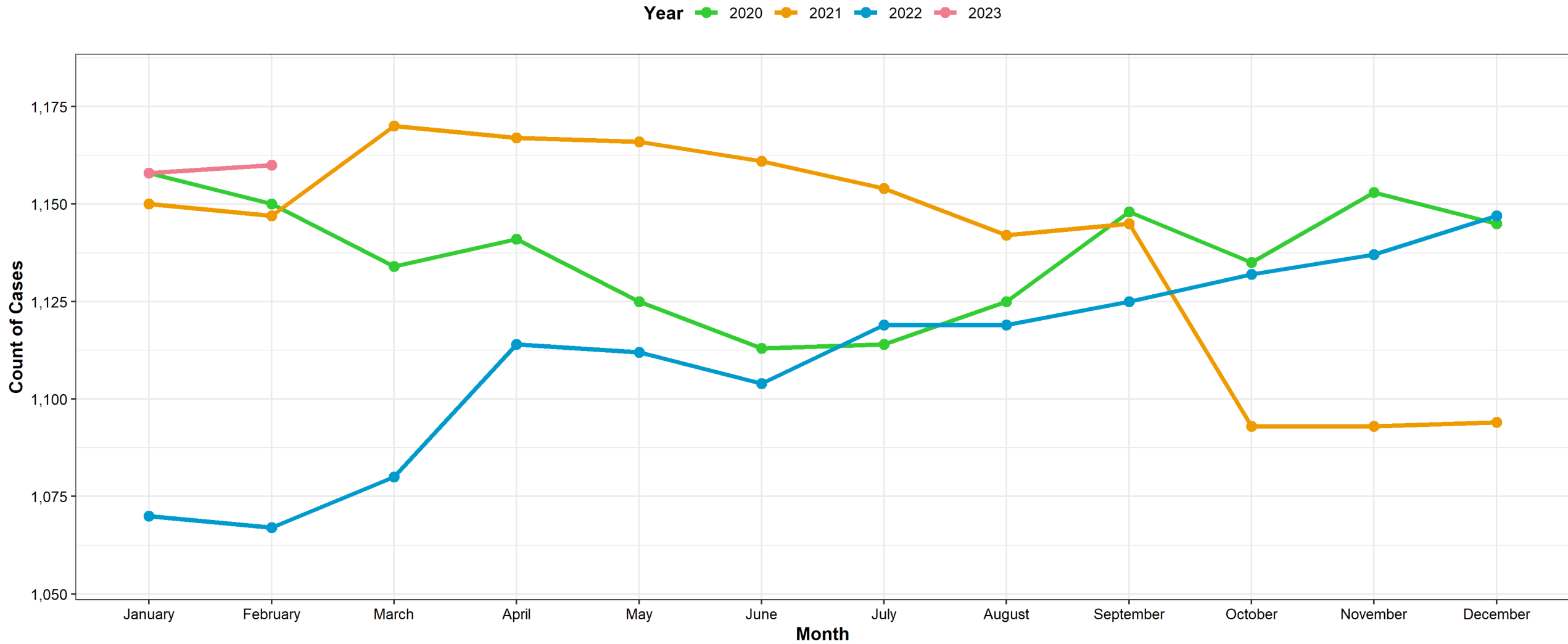
# Child Protection: Assessment Workforce Capacity

## Average Assessments Assigned Per CPSW 2020-2023 (Last day of Month)

Assessment



# Child Protection: Open Family Service Cases

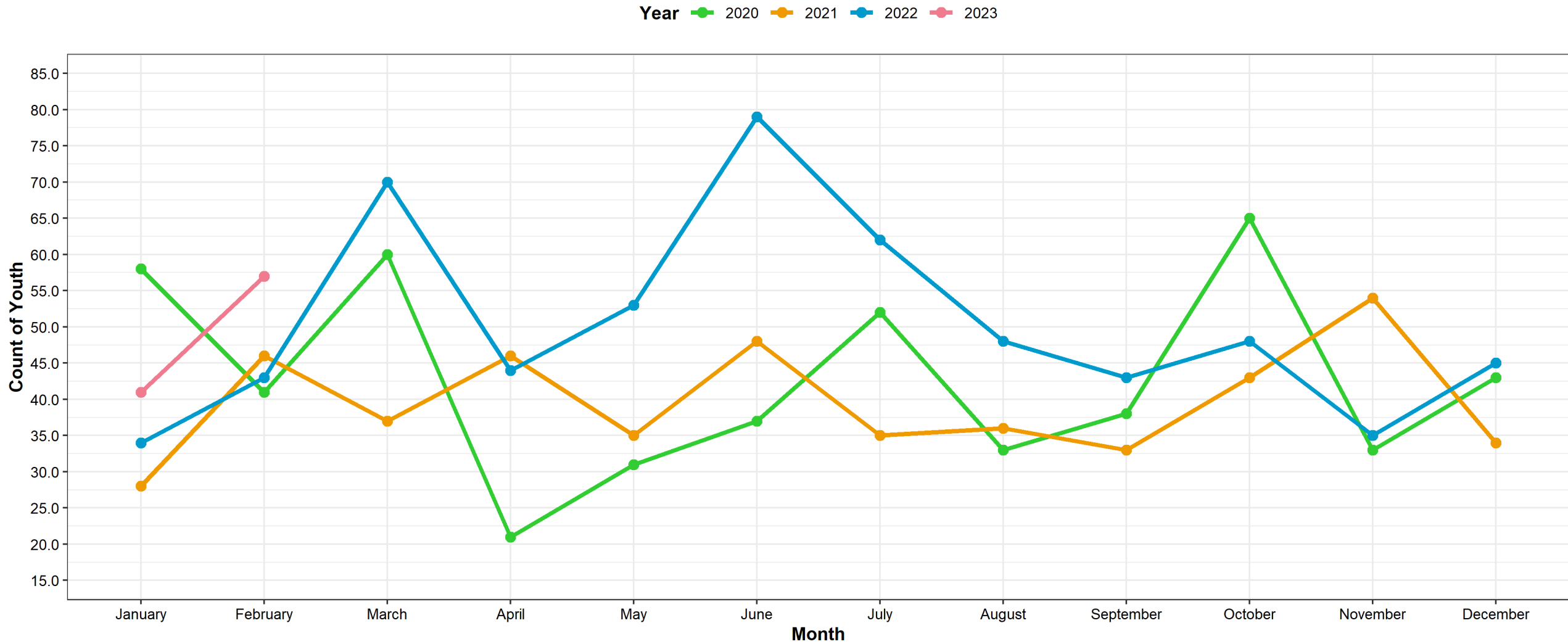


Extracted from Bridges (NH SACWIS) on 03/16/2023





# Child Protection: Youth Entering Out of Home Care

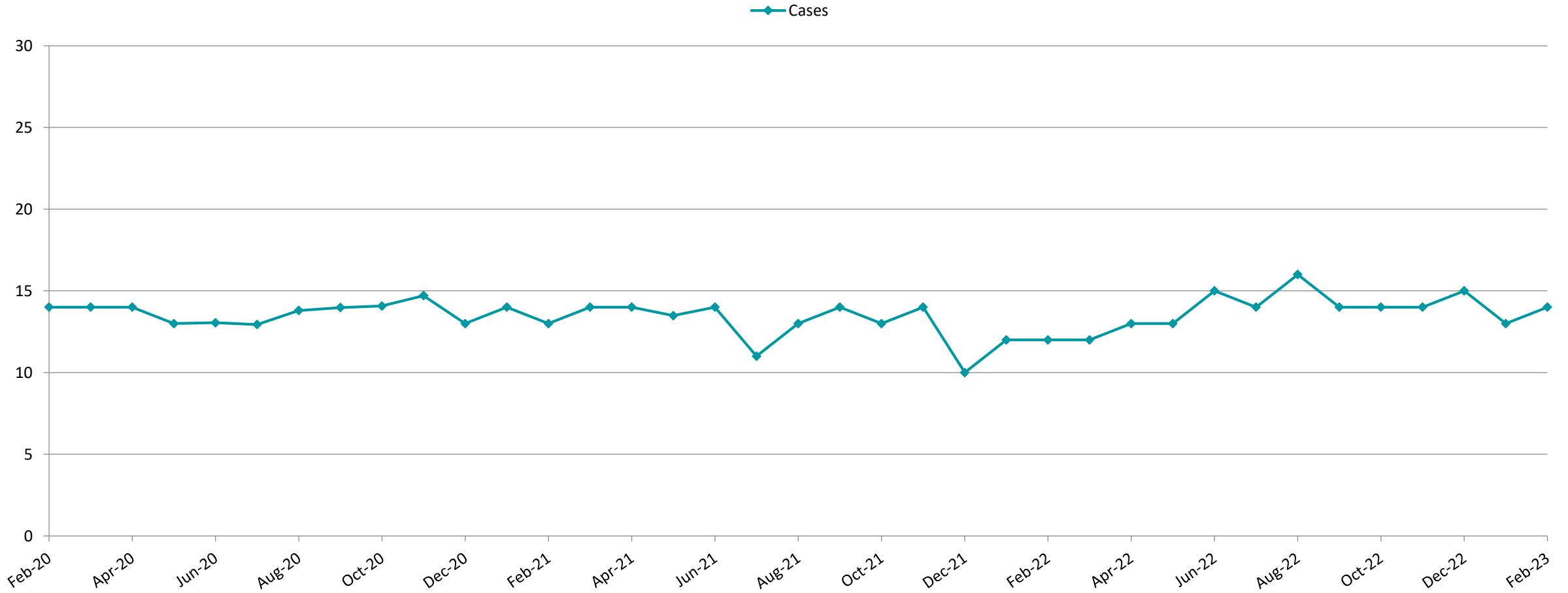


Extracted from Bridges (NH SACWIS) on 03/16/2023



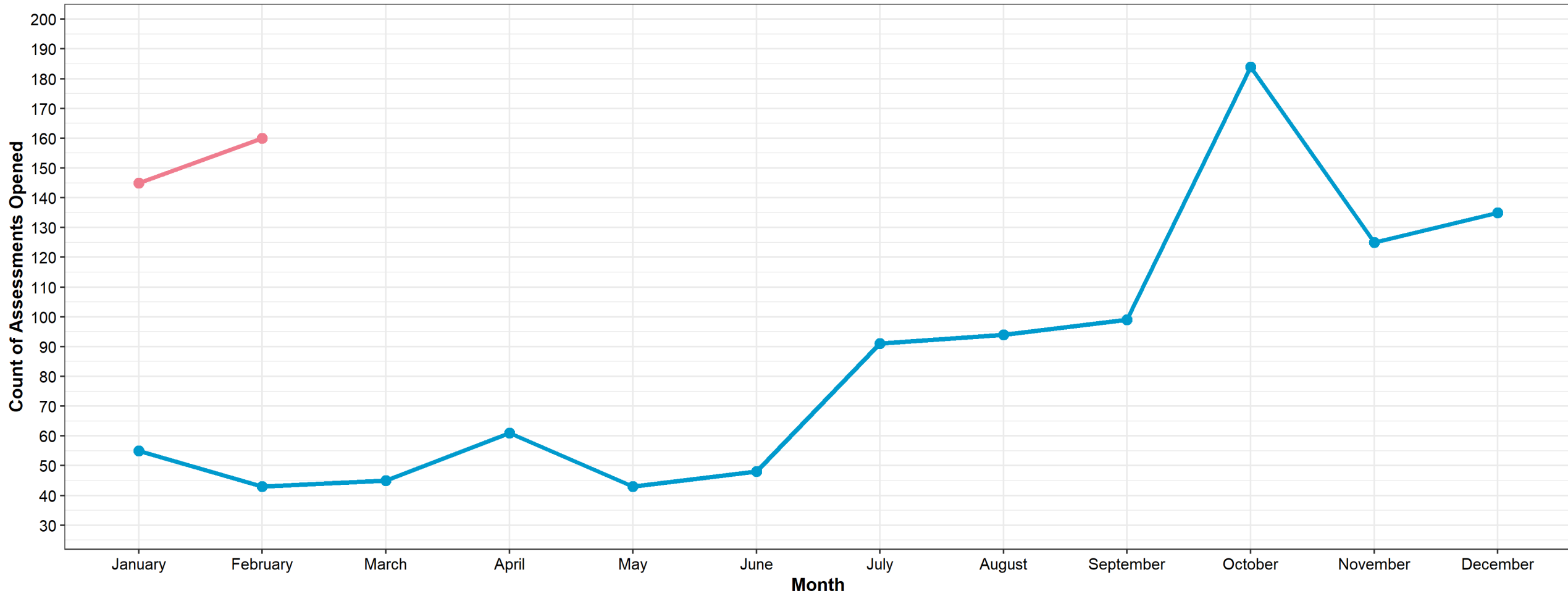
# Child Protection: Family Service Workforce Capacity

**Average Number of Cases Assigned per CPSW**  
(Last day of the Month, 2020-2023)



# Juvenile Justice: Assessments Opened

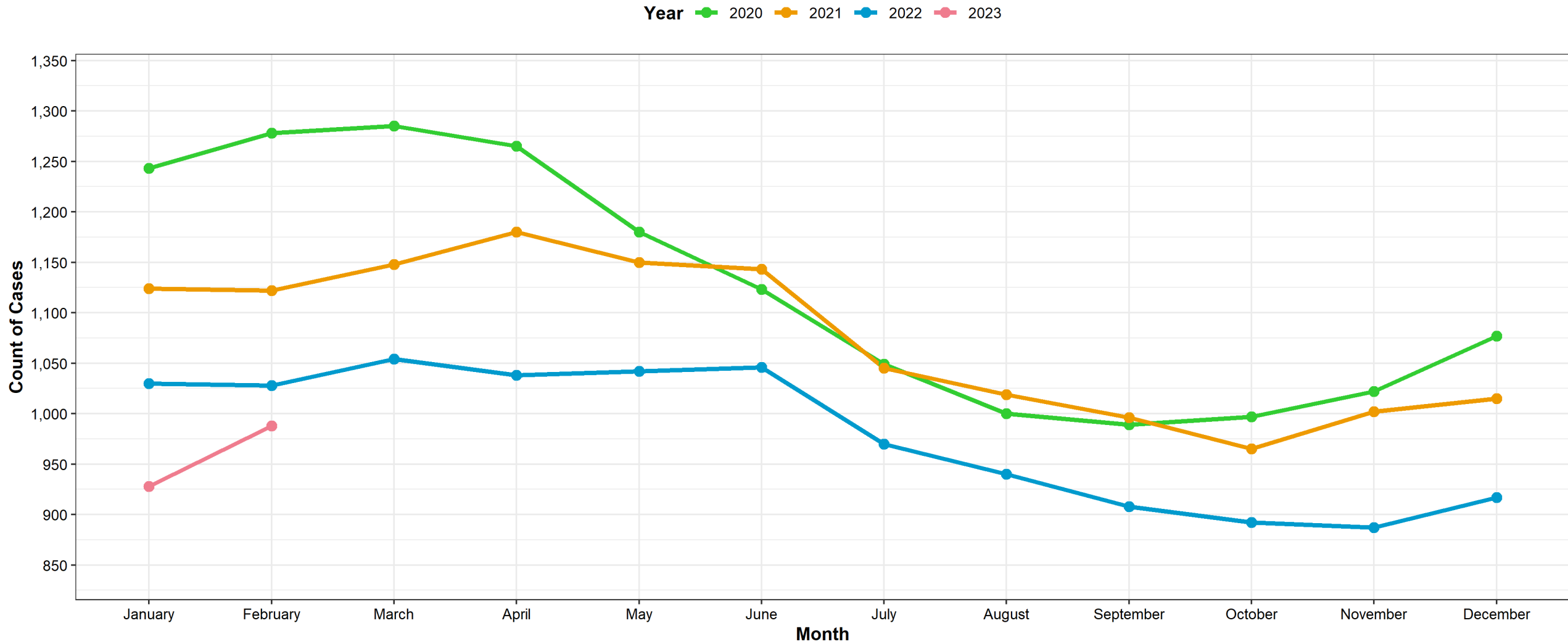
Year 2022 2023



Extracted from Bridges (NH SACWIS) on 03/16/2023



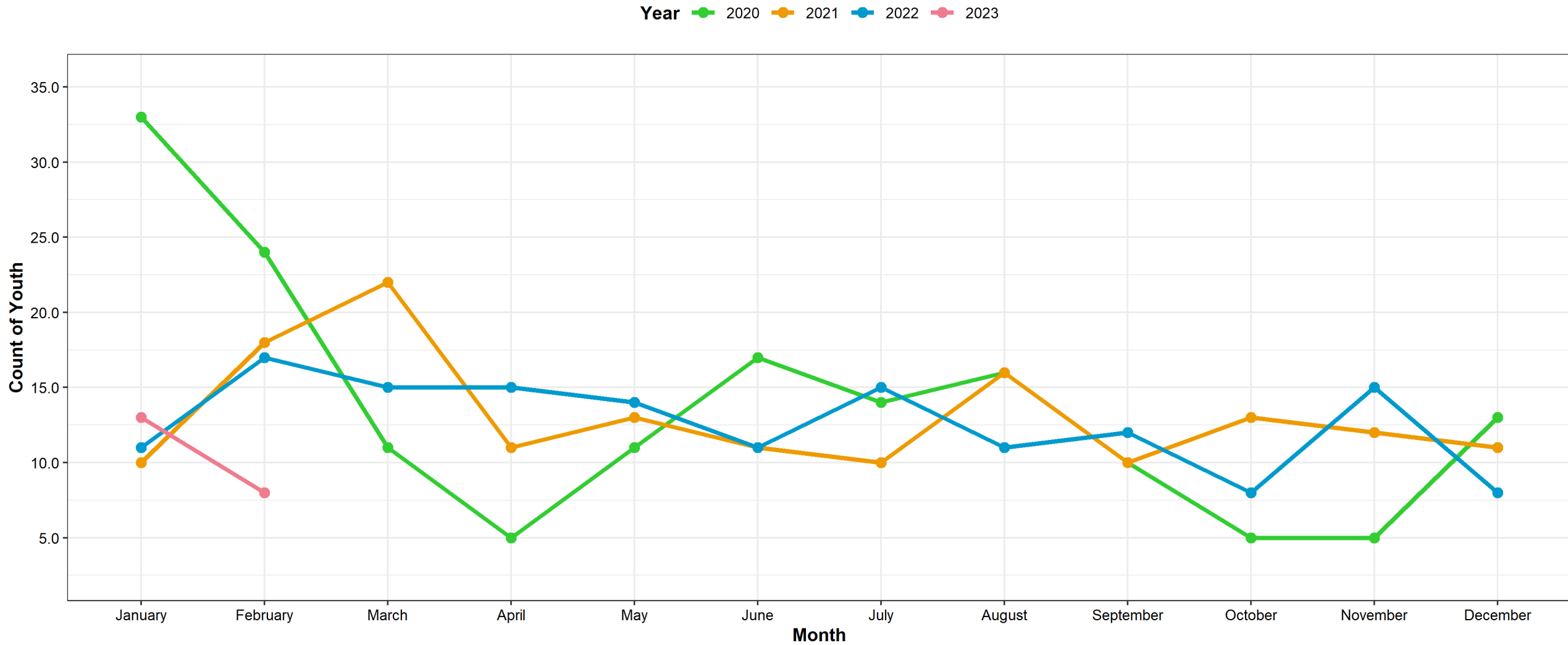
# Juvenile Justice: Open Cases



Extracted from Bridges (NH SACWIS) on 03/16/2023



# Juvenile Justice: Youth Entering Out of Home Care

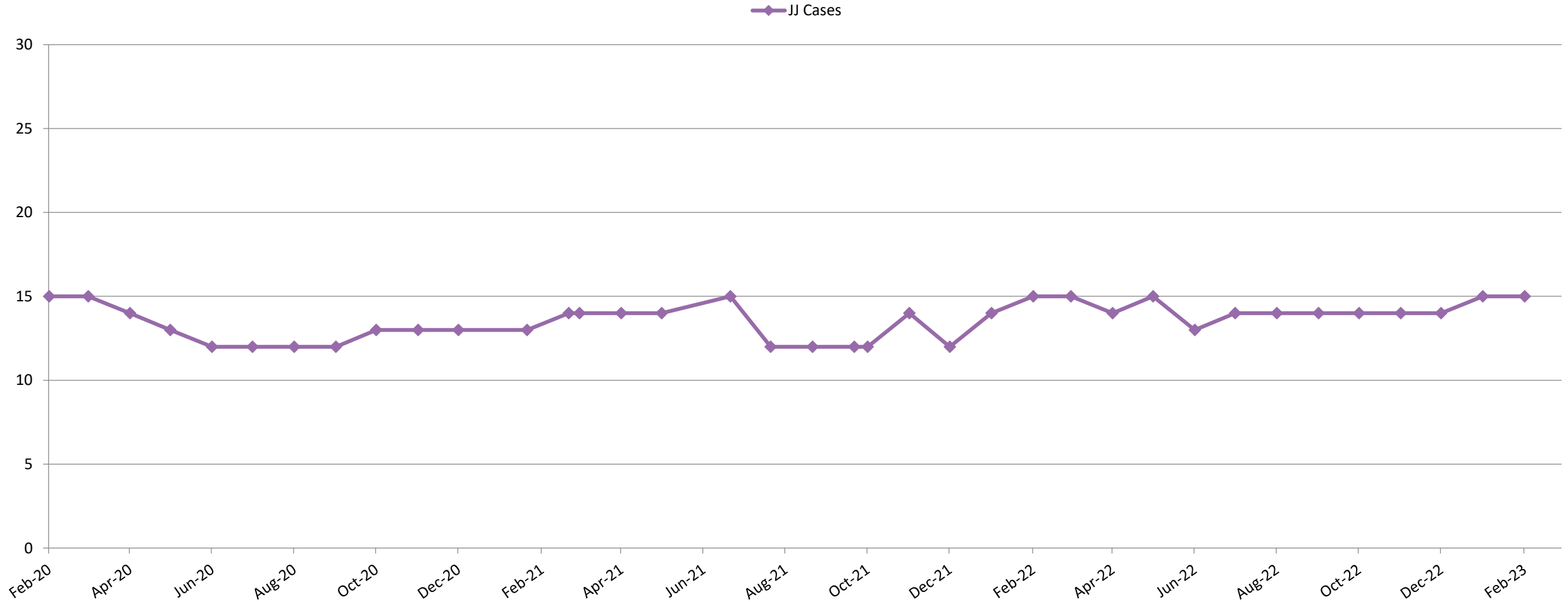


Extracted from Bridges (NH SACWIS) on 03/16/2023

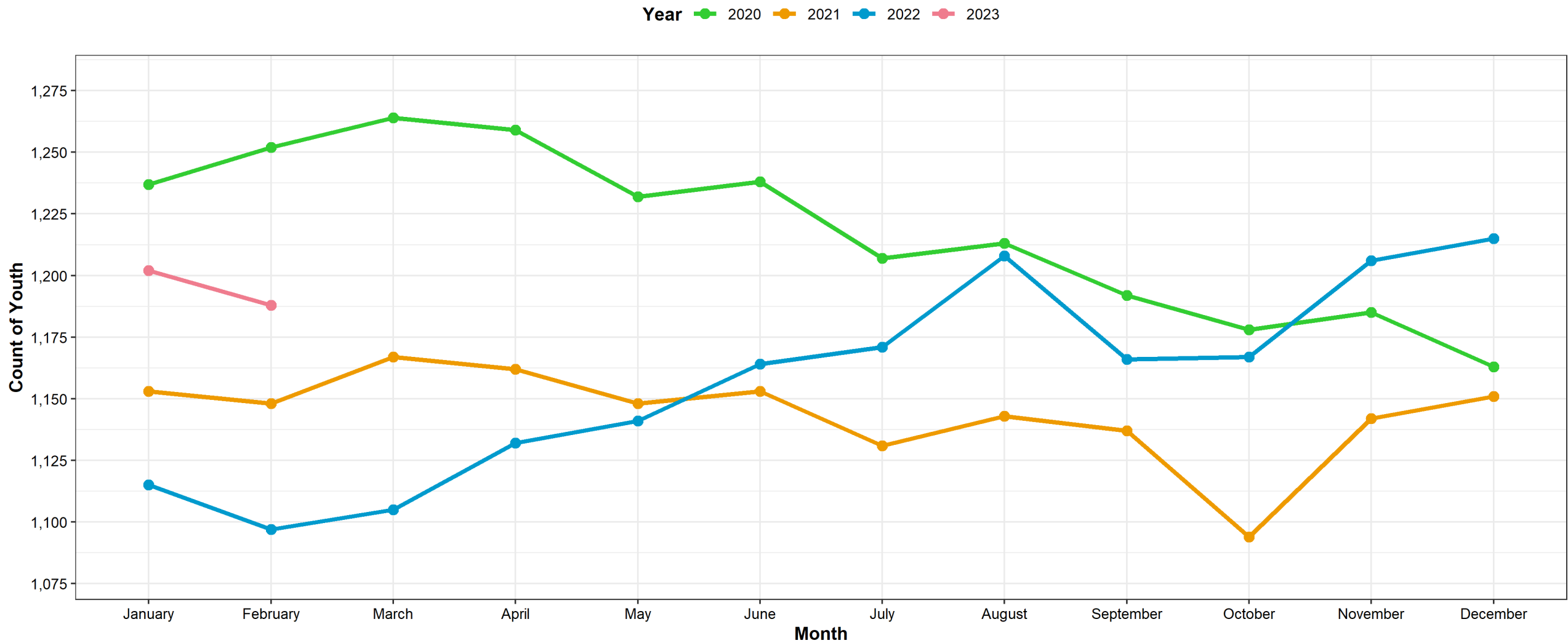


# Juvenile Justice: Workforce Capacity

**Adjusted Average # of Cases per JPPO**  
(Last Day of Month, 2020-2023)



# Child Protection & Juvenile Justice: Youth in Out of Home Care



Extracted from Bridges (NH SACWIS) on 03/16/2023



# Total SYSC Population

## Total SYSC Population

