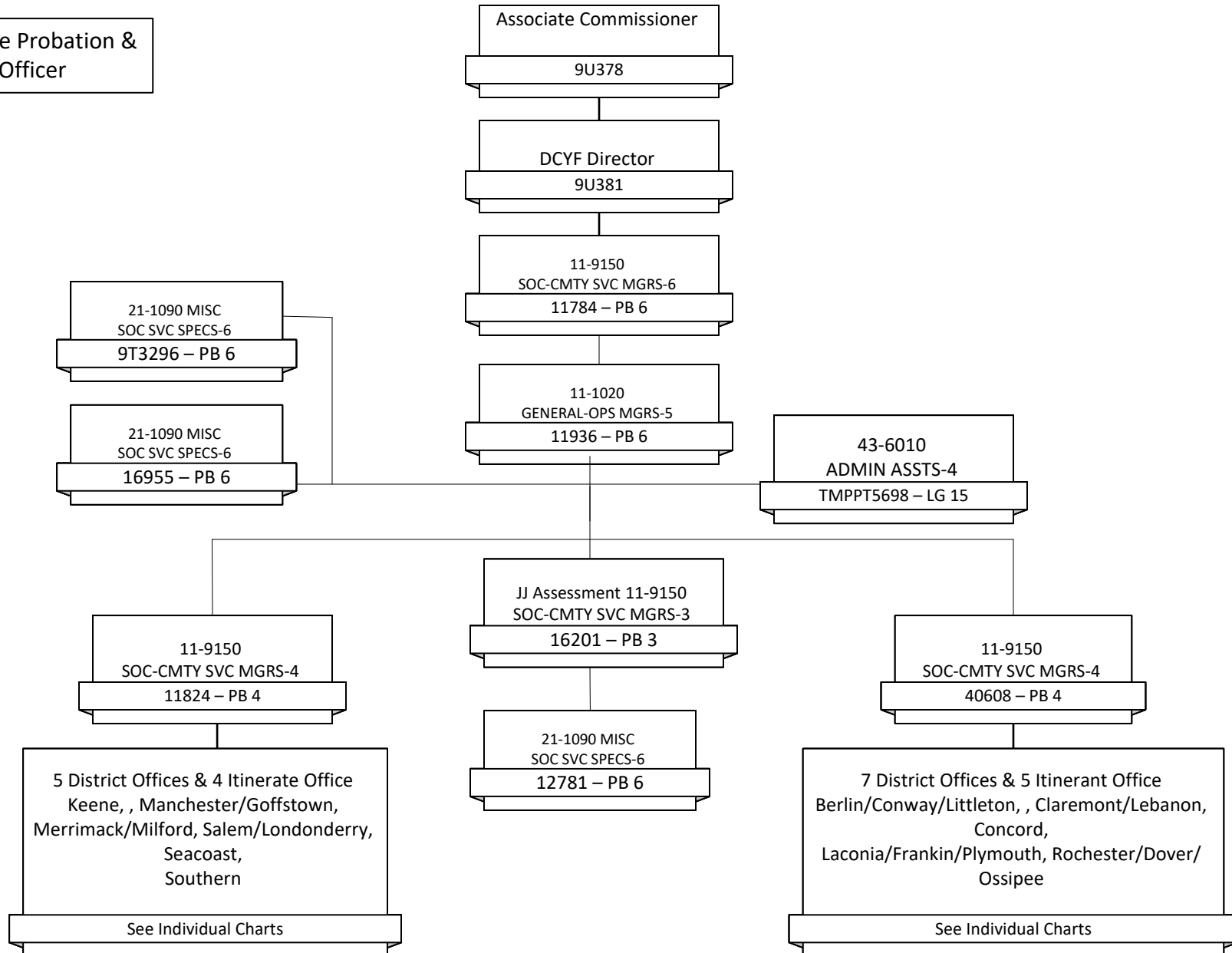




NH Department of Health and Human Services Children, Youth & Families - Juvenile Justice Services - State Office

JPPO = Juvenile Probation & Parole Officer



July 2024

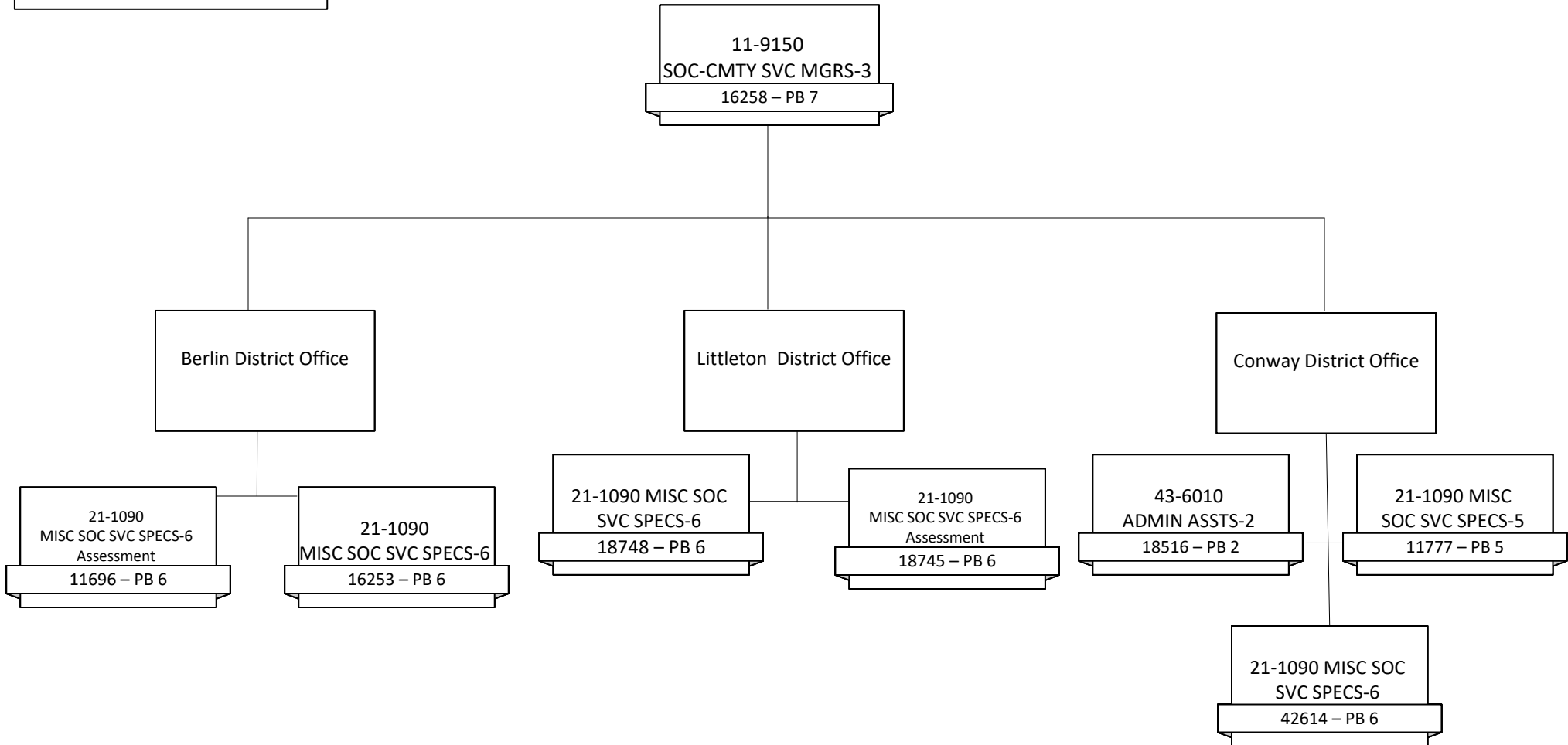


NH Department of Health and Human Services

Juvenile Justice Services

Berlin, Conway & Littleton District Office

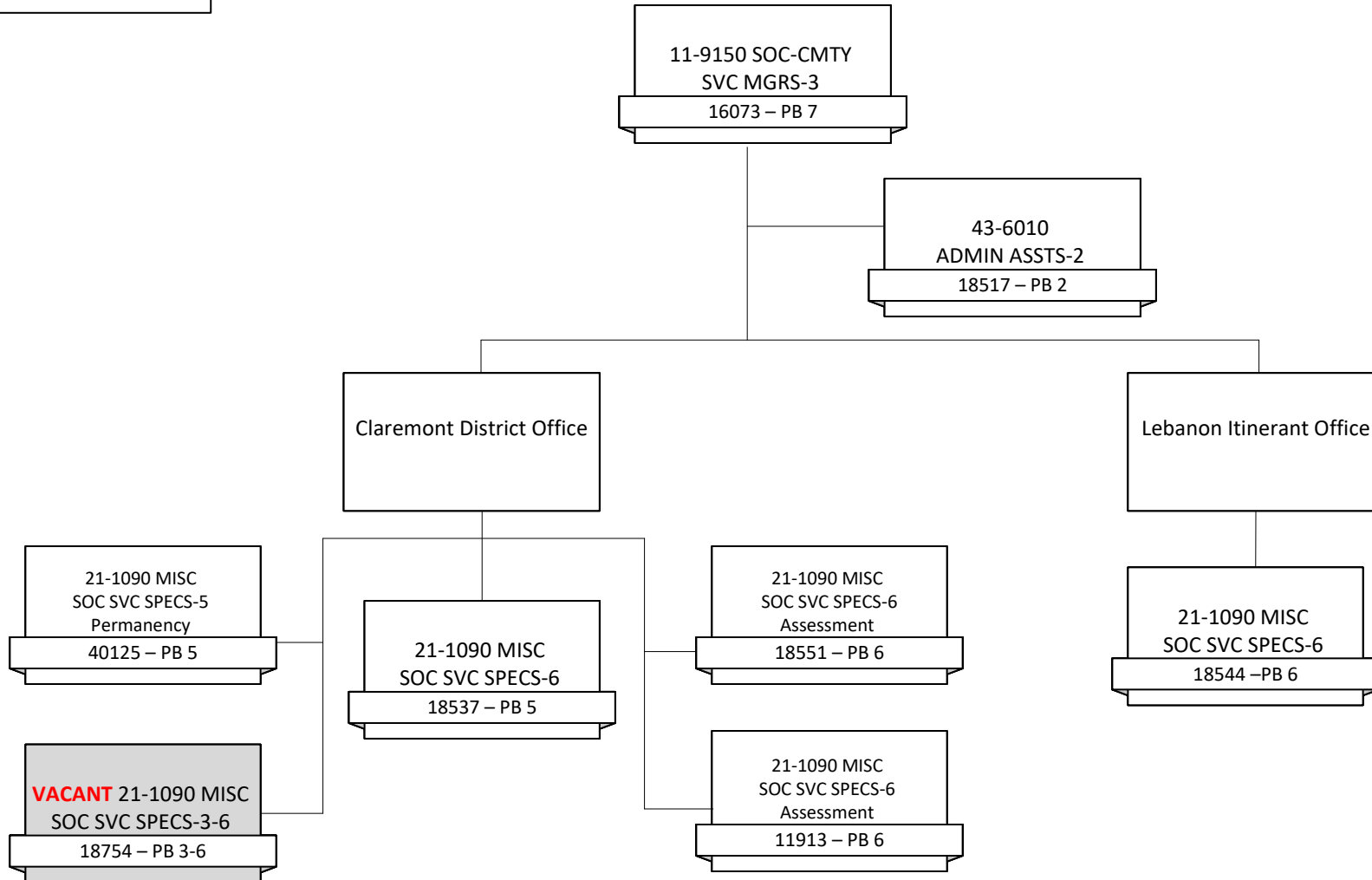
JPPO = Juvenile Probation & Parole Officer





NH Department of Health and Human Services Juvenile Justice Services Claremont District Office & Lebanon Itinerant Office

JPPPO = Juvenile Probation & Parole Officer

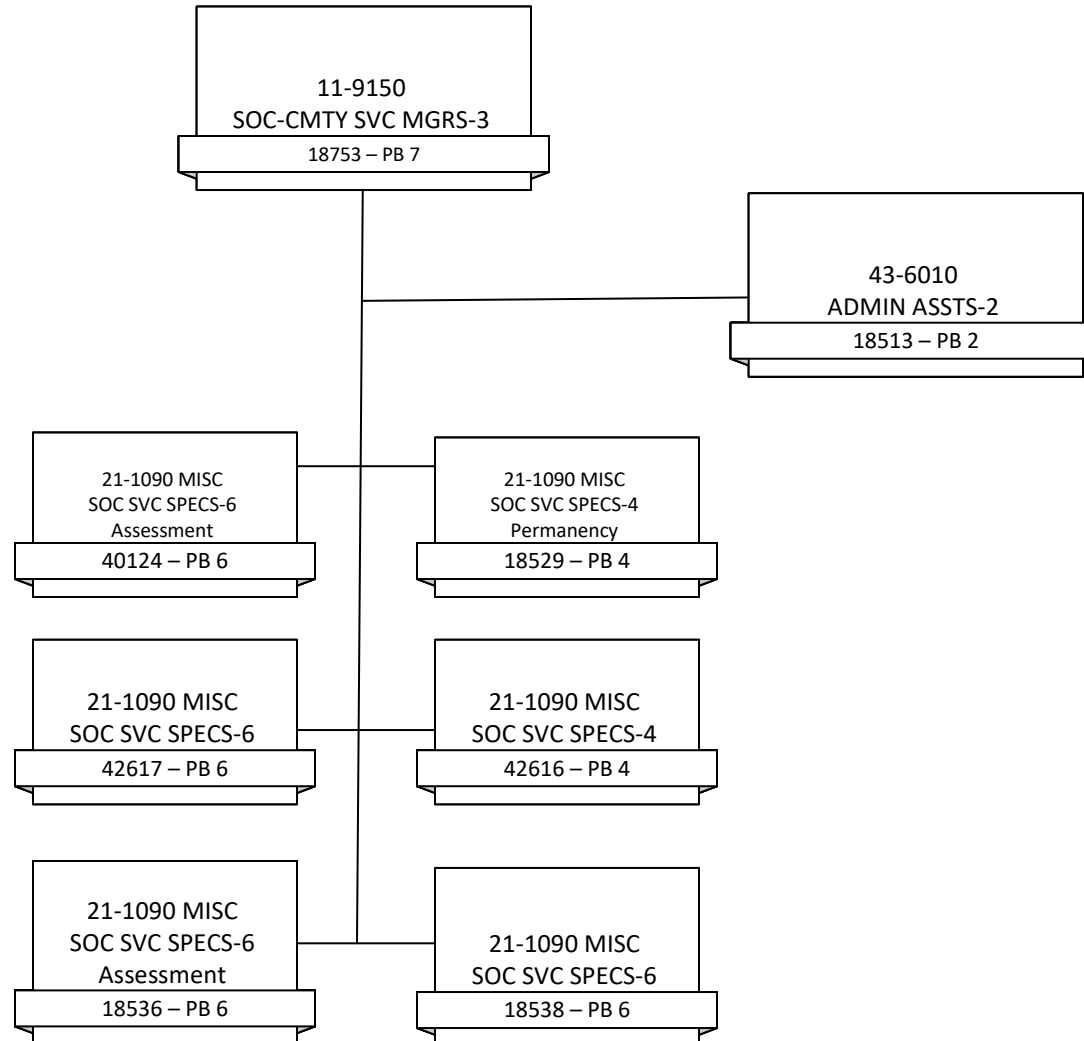


July 2024



NH Department of Health and Human Services Juvenile Justice Services Concord District Office

JPPO = Juvenile Probation &
Parole Officer



July 2024

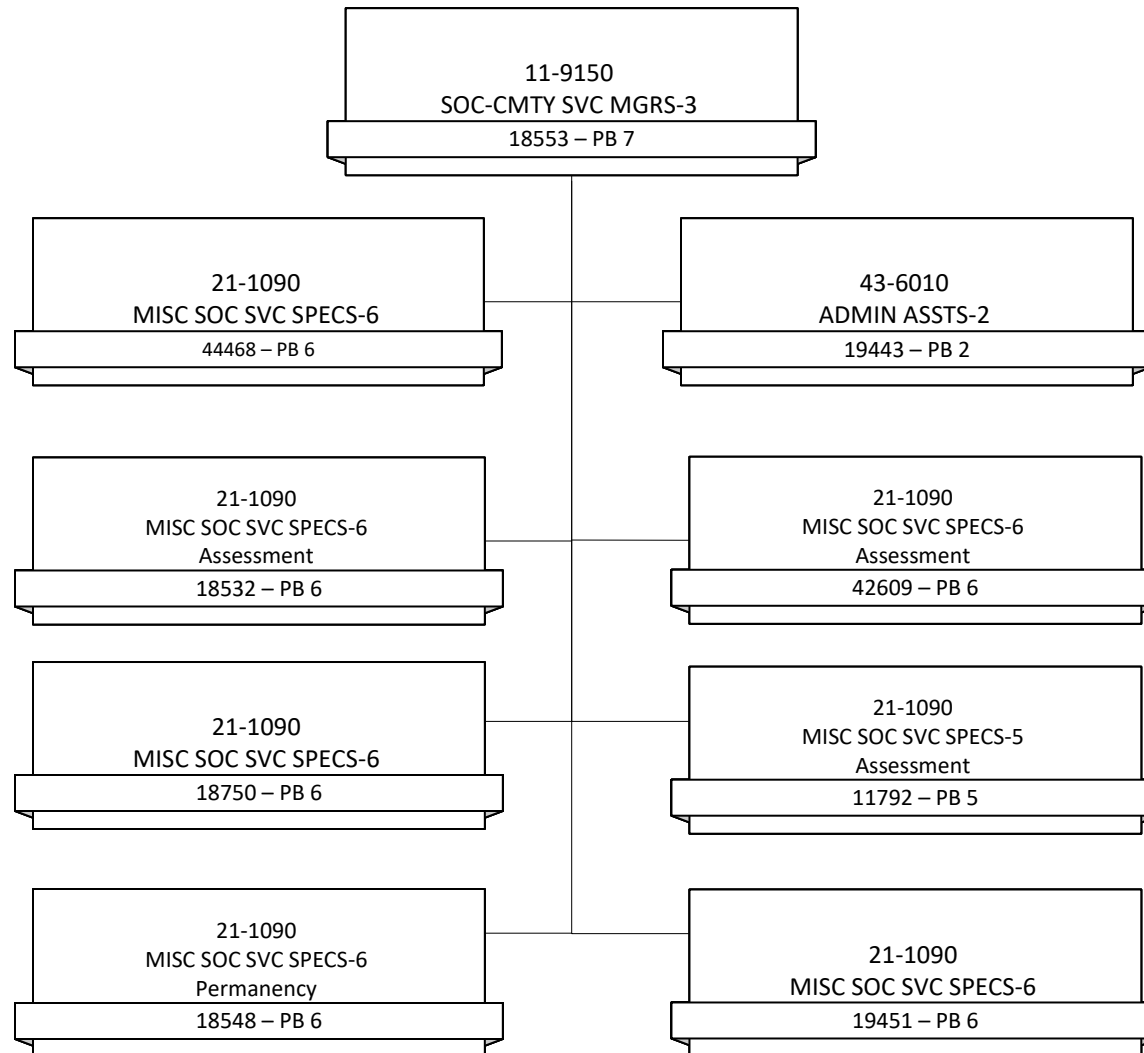


NH Department of Health and Human Services

Juvenile Justice Services

Keene District Office

JPPO = Juvenile Probation & Parole Officer

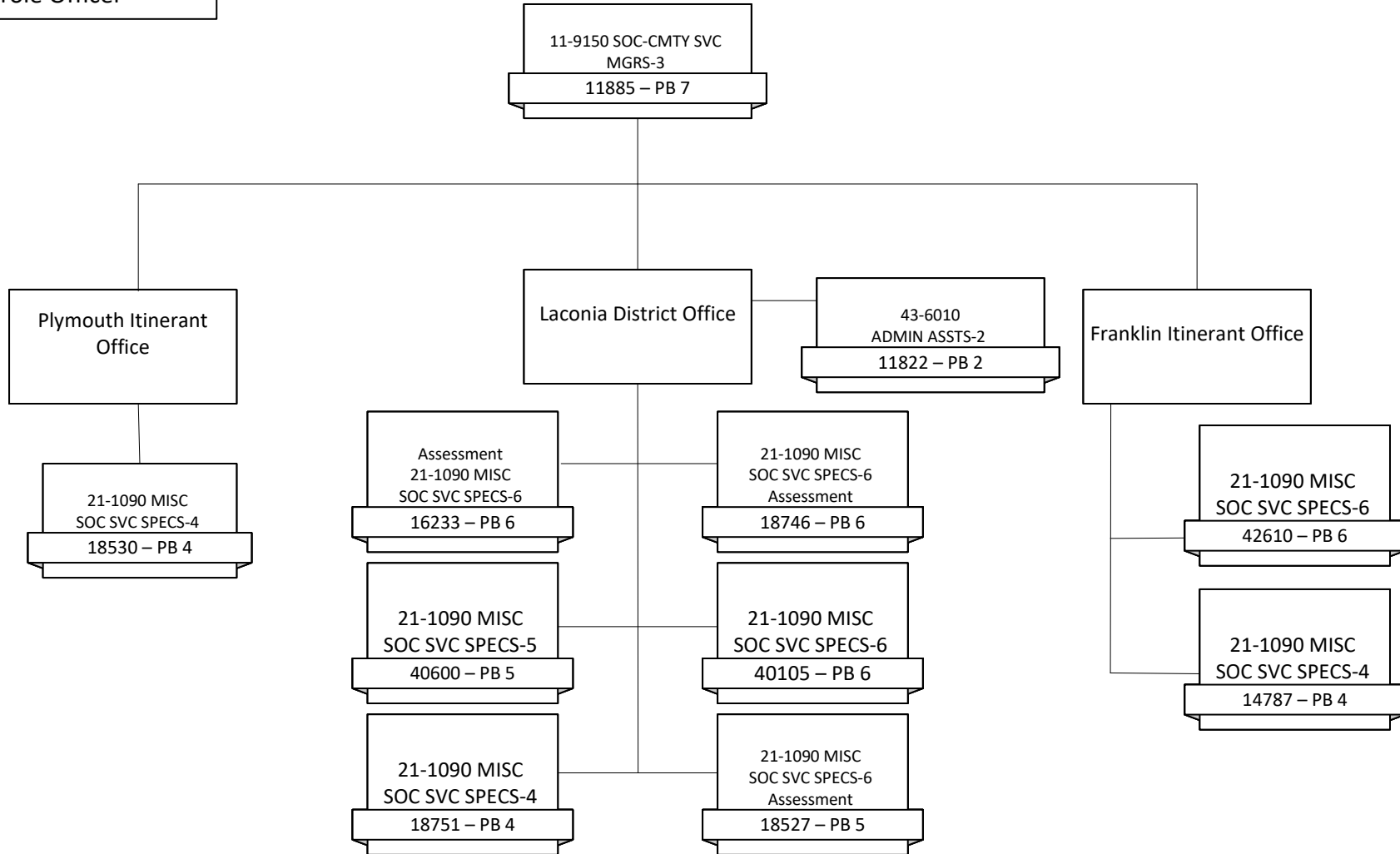


July 2024



NH Department of Health and Human Services Juvenile Justice Services Laconia District Office & Franklin, Plymouth Itinerant Office

JPPO = Juvenile Probation &
Parole Officer

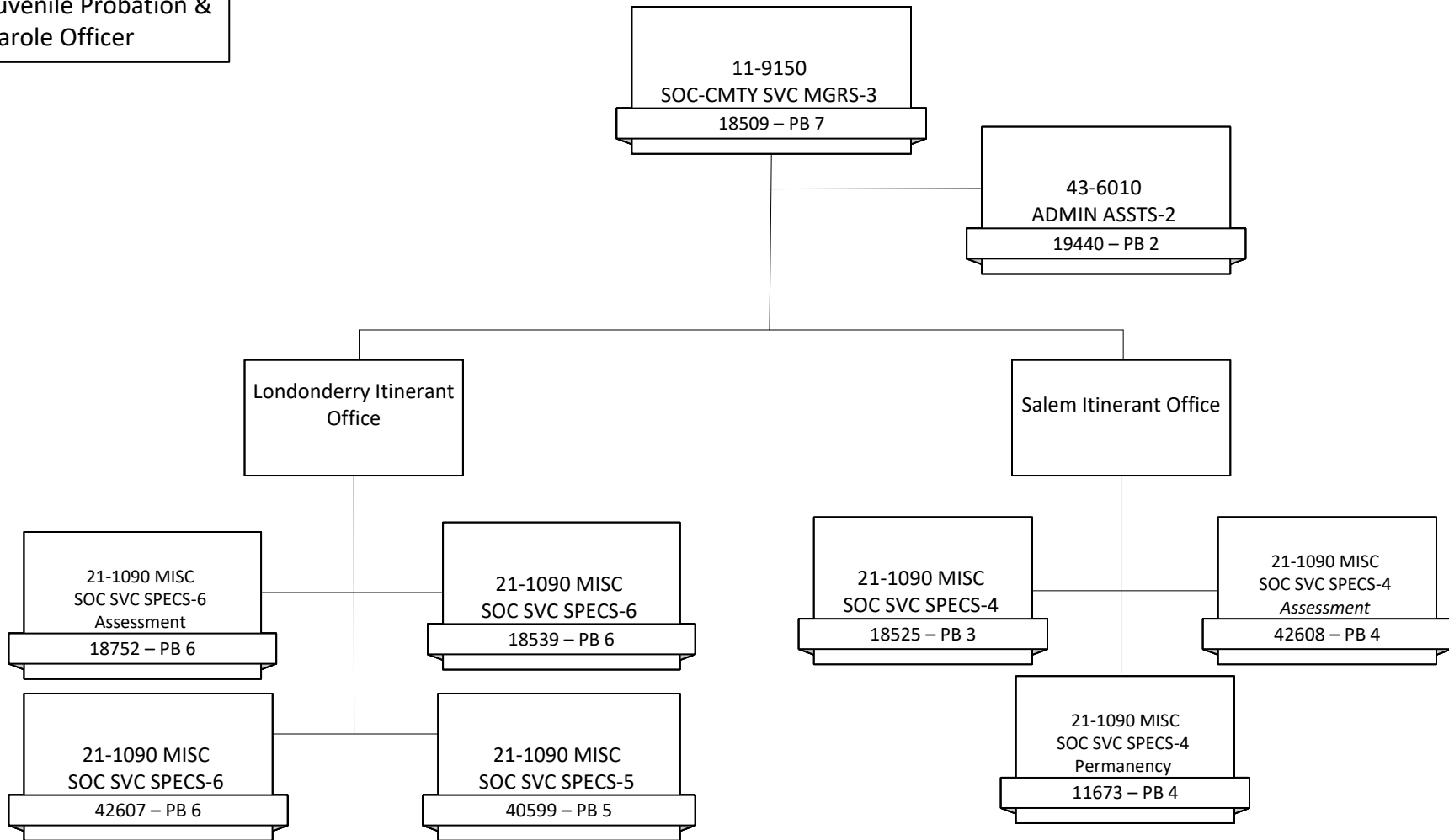




NH Department of Health and Human Services

Juvenile Justice Services Londonderry & Salem Itinerant Office

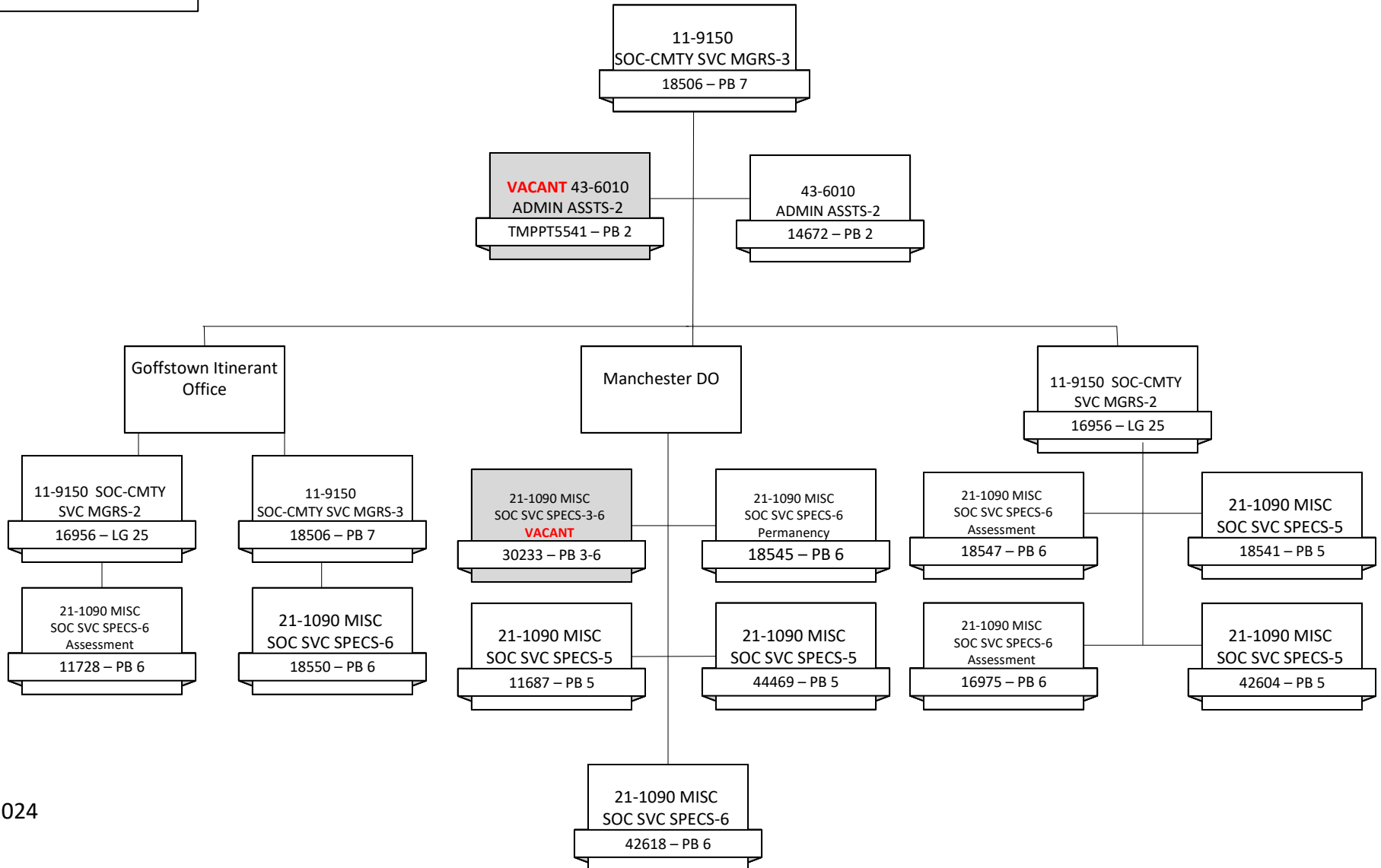
JPPO = Juvenile Probation & Parole Officer





NH Department of Health and Human Services Juvenile Justice Services Manchester District Court & Goffstown Itinerant Office

JPPO = Juvenile Probation & Parole Officer



July 2024

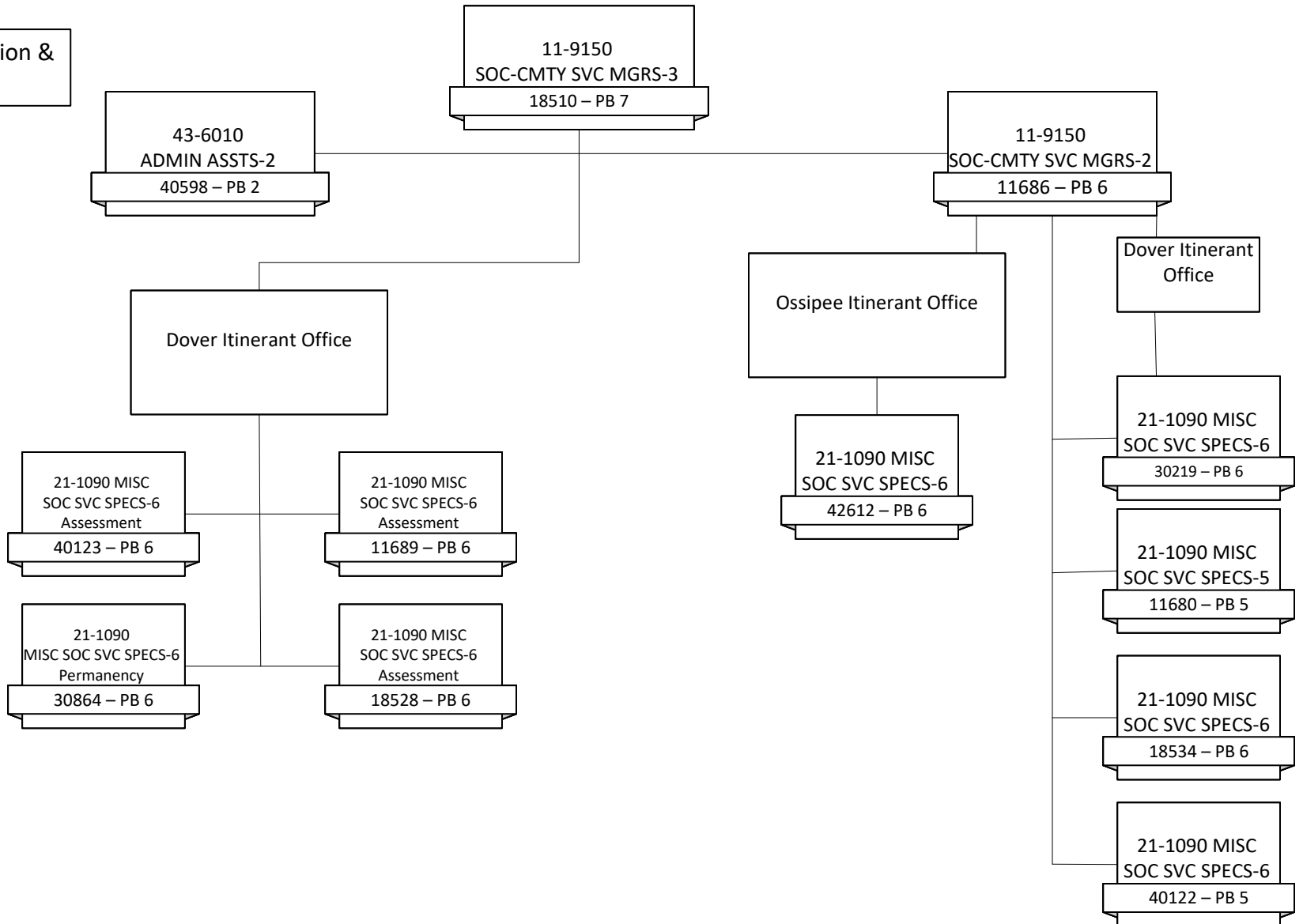


NH Department of Health and Human Services

Juvenile Justice Services

Rochester District Office & Dover, Ossipee Itinerant Office

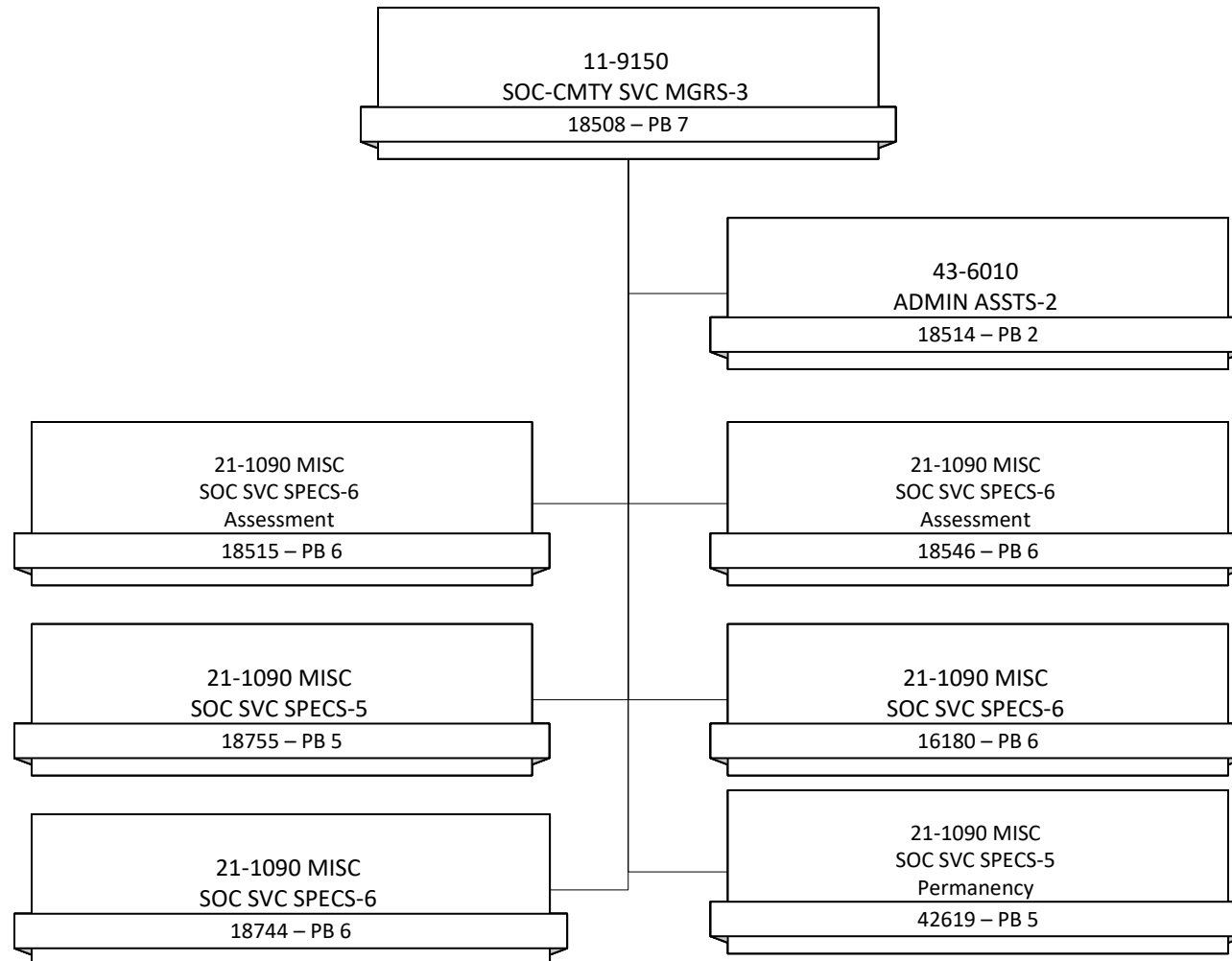
JPPO = Juvenile Probation & Parole Officer





NH Department of Health and Human Services Juvenile Justice Services - Seacoast District Office

JPPO = Juvenile Probation &
Parole Officer



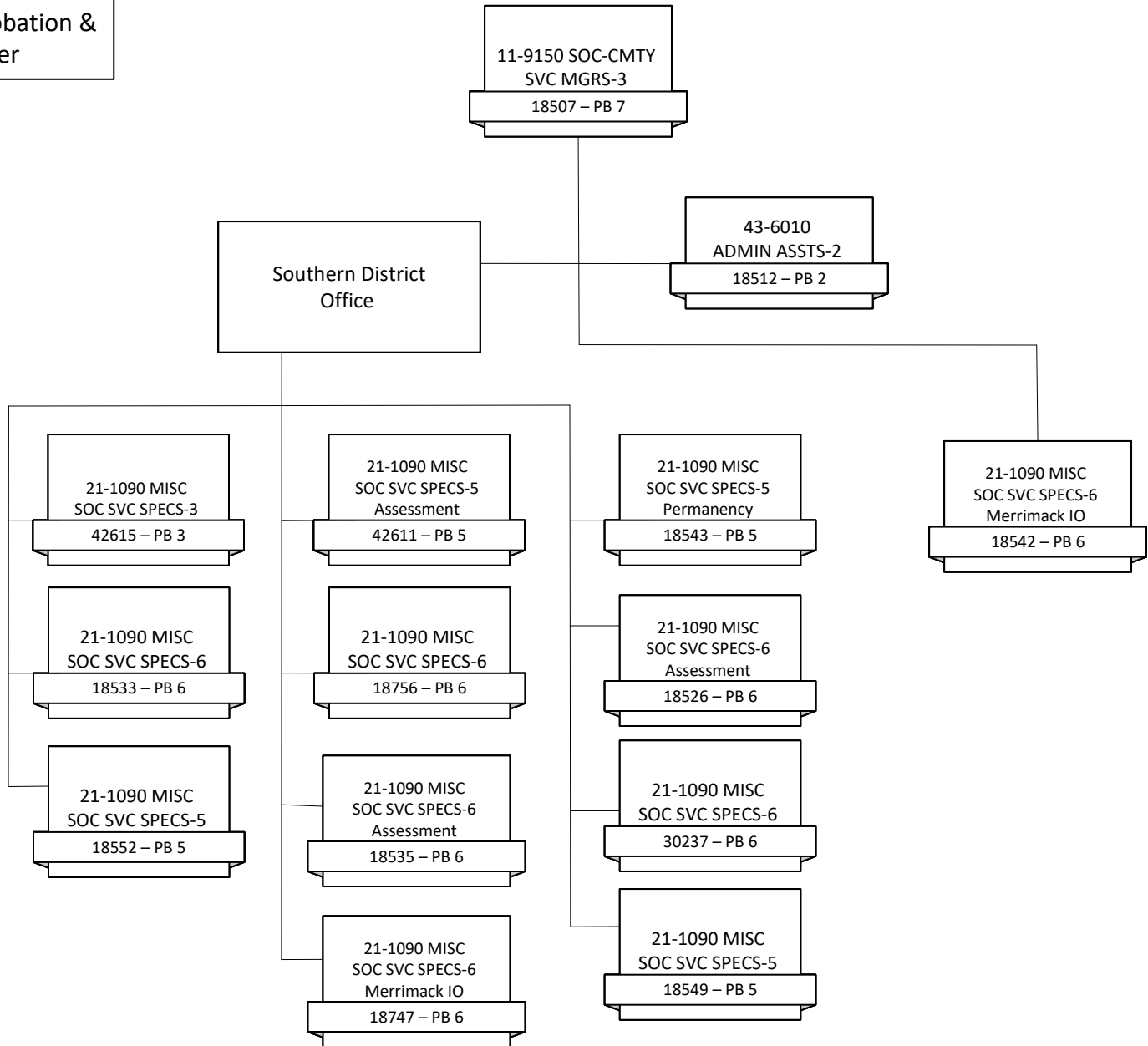


NH Department of Health and Human Services

Juvenile Justice Services

Southern District Office & Merrimack Itinerant Office

JPPO = Juvenile Probation & Parole Officer



July 2024