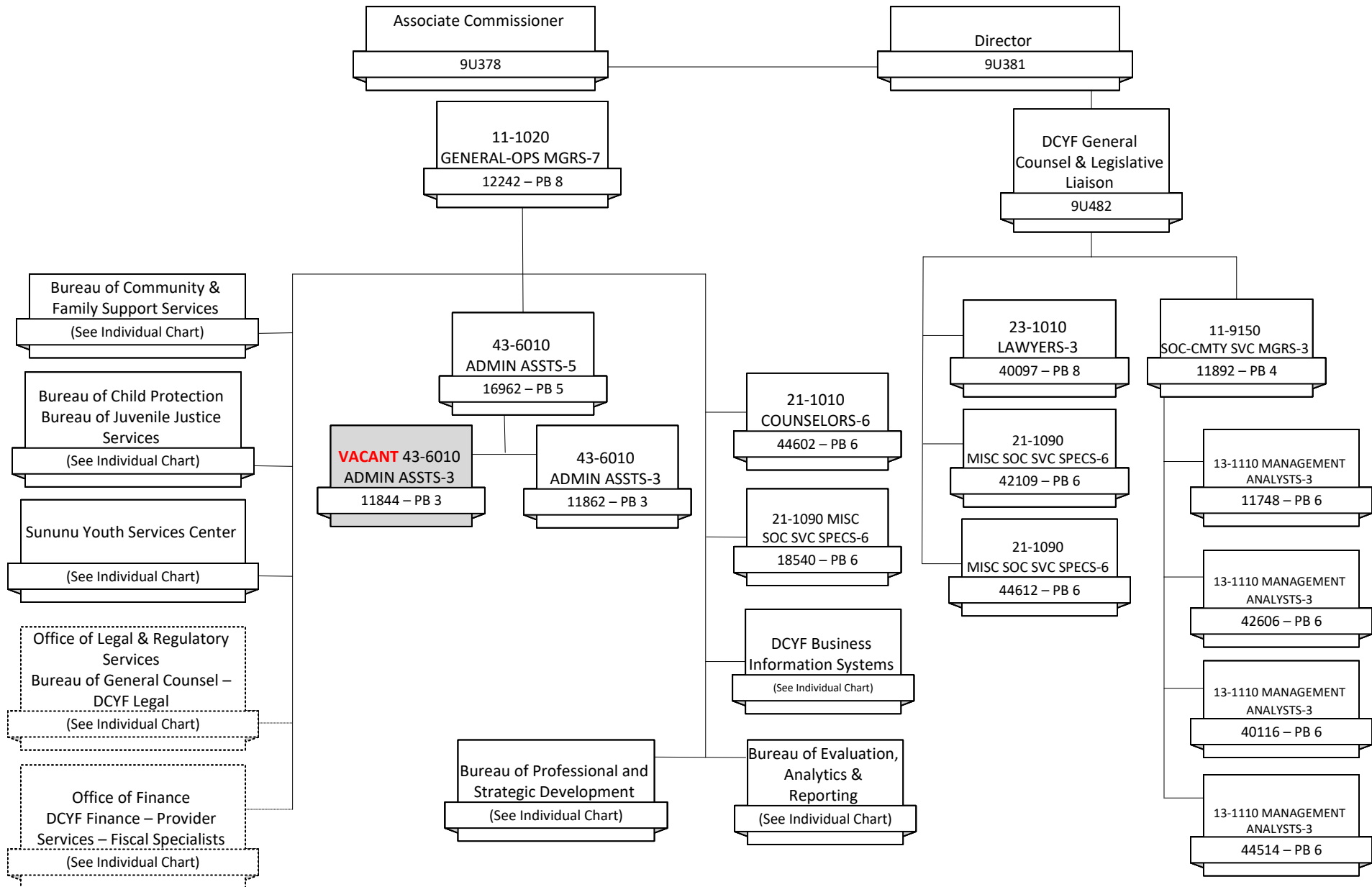




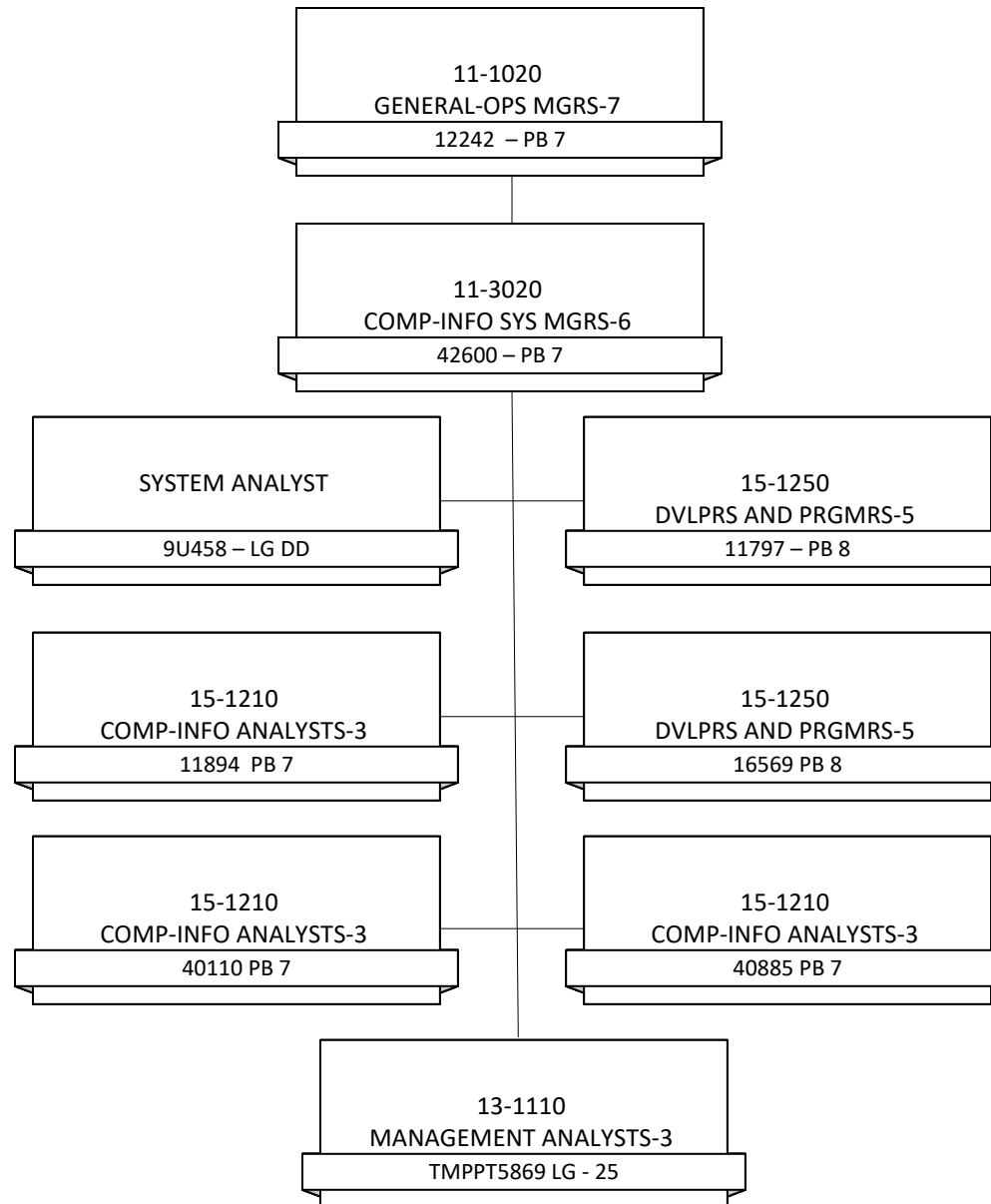
# NH Department of Health and Human Services Division for Children, Youth and Families





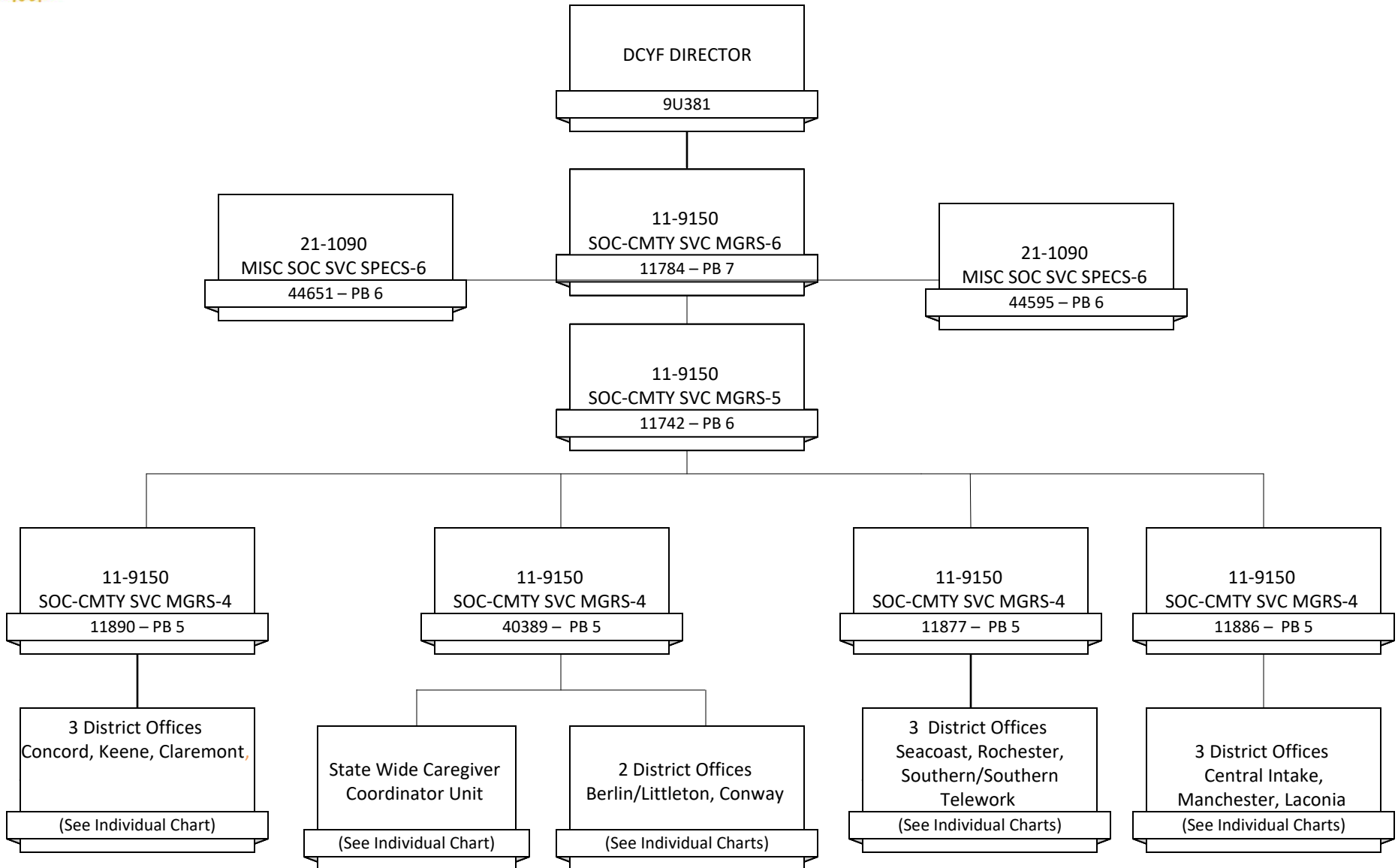
# NH Department of Health and Human Services

## Business information Systems



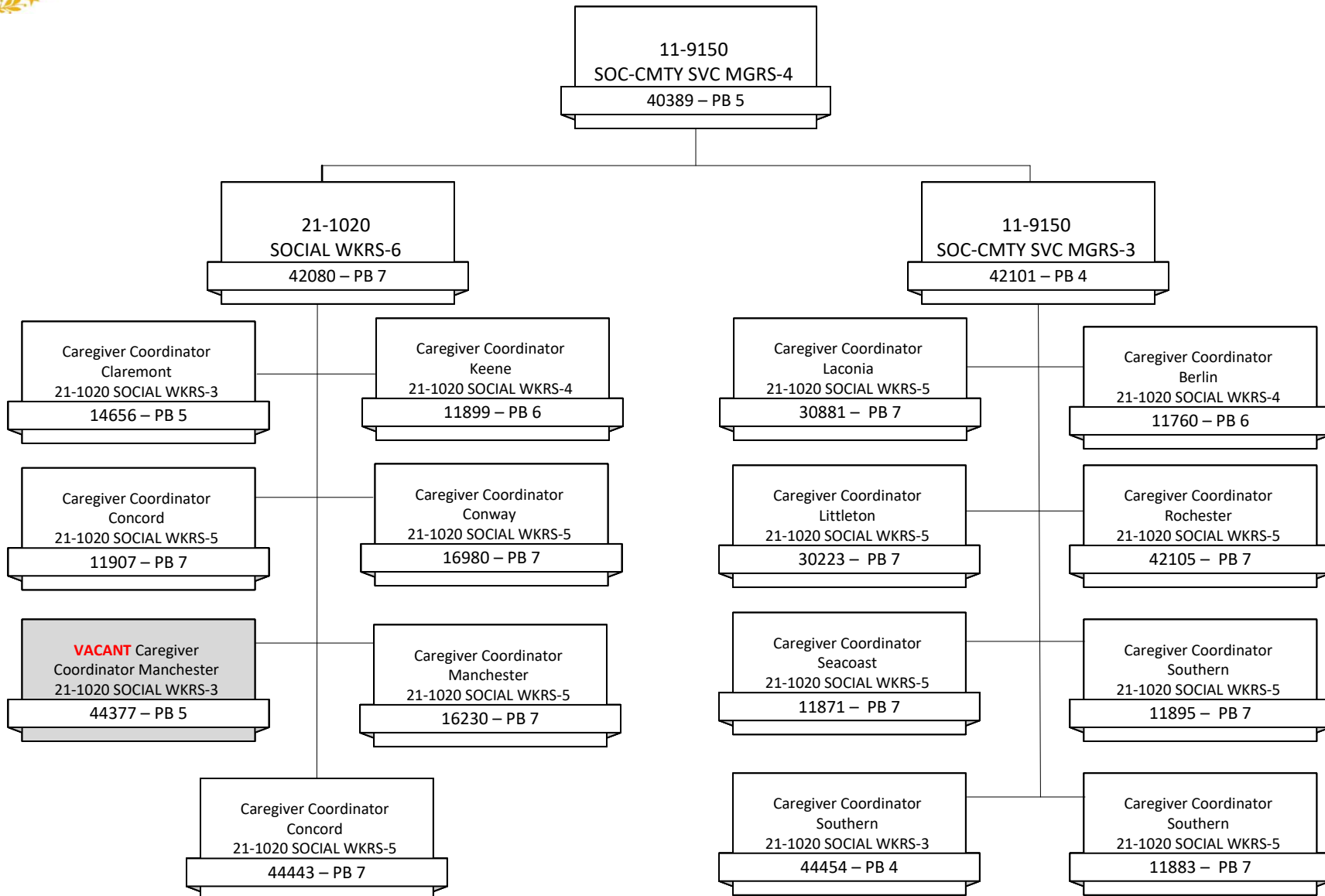


# NH Department of Health and Human Services Child Protection





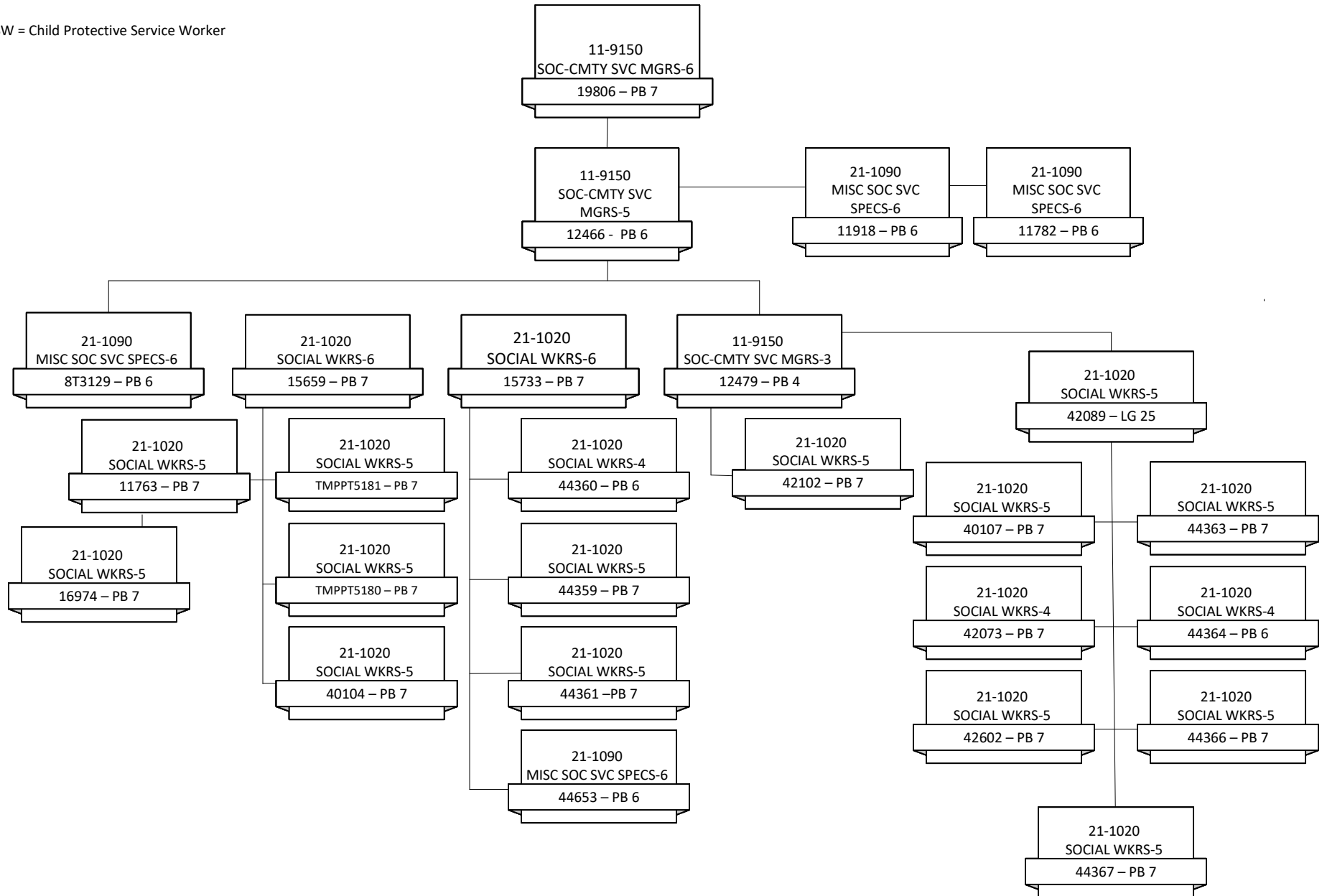
# NH Department of Health and Human Services Statewide Caregiver Coordinator Team





# NH Department of Health and Human Services Community, Family & Program Support (Part I)

CPSW = Child Protective Service Worker

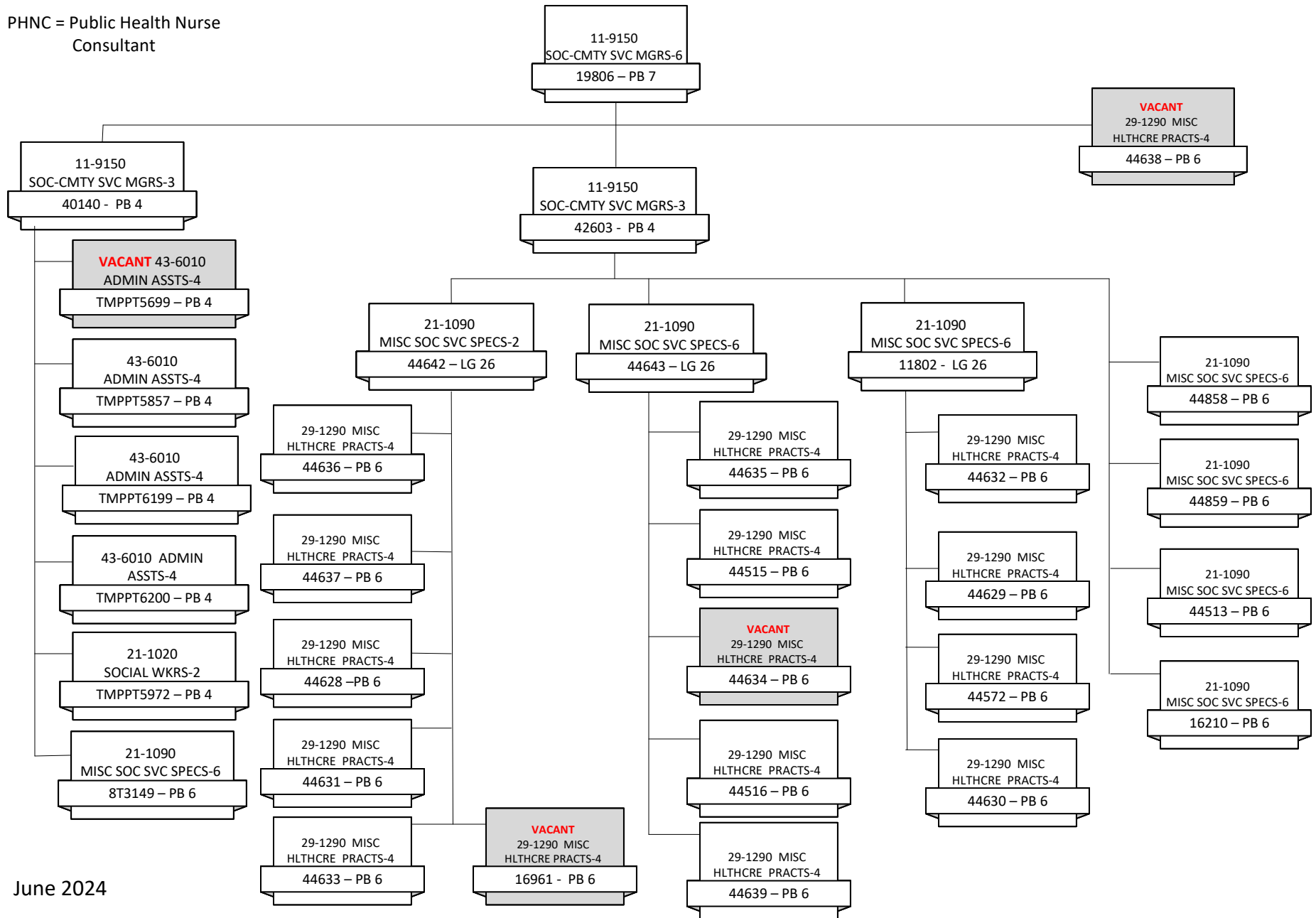




# NH Department of Health and Human Services

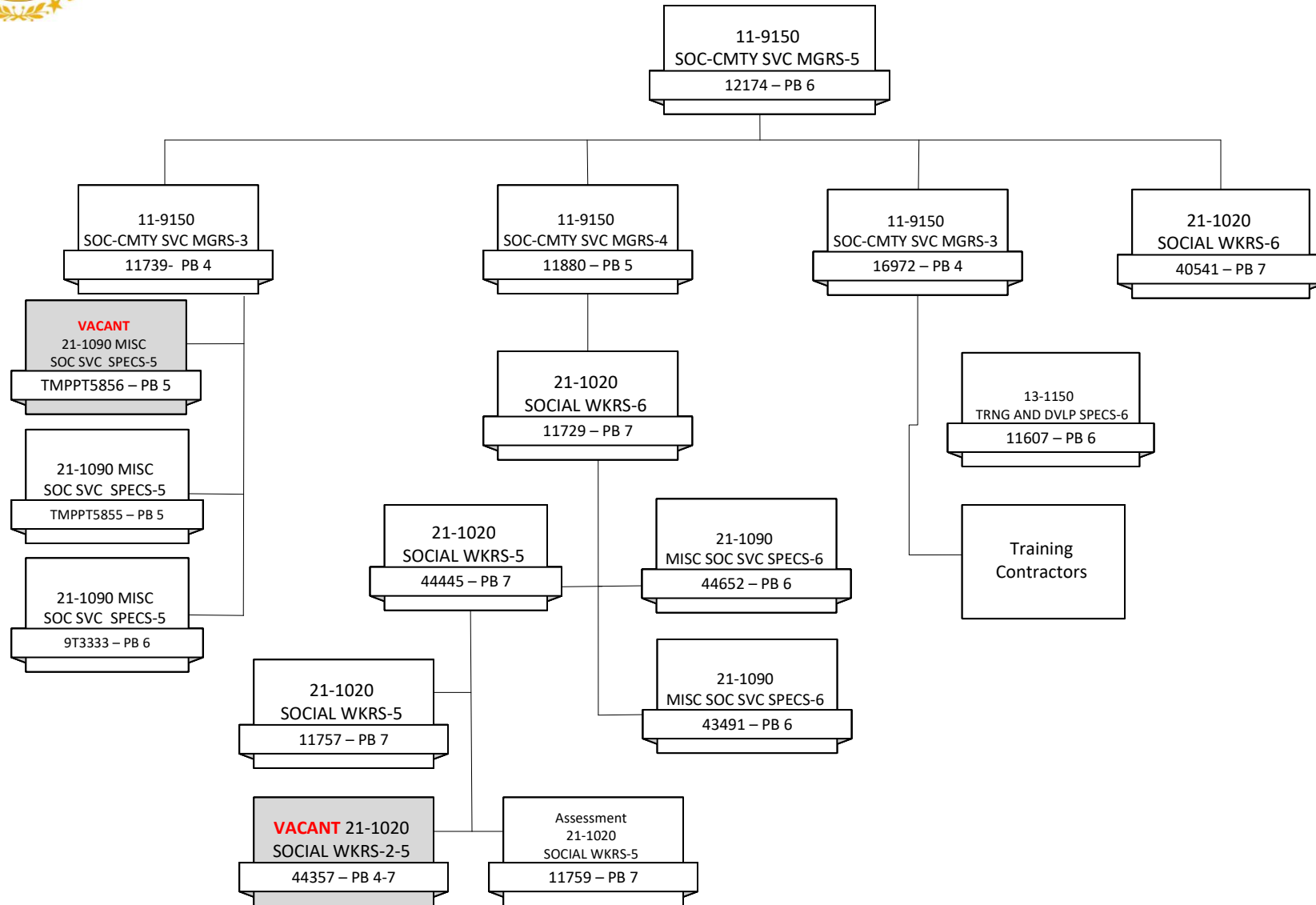
## Community, Family & Program Support (Part II)

PHNC = Public Health Nurse  
Consultant





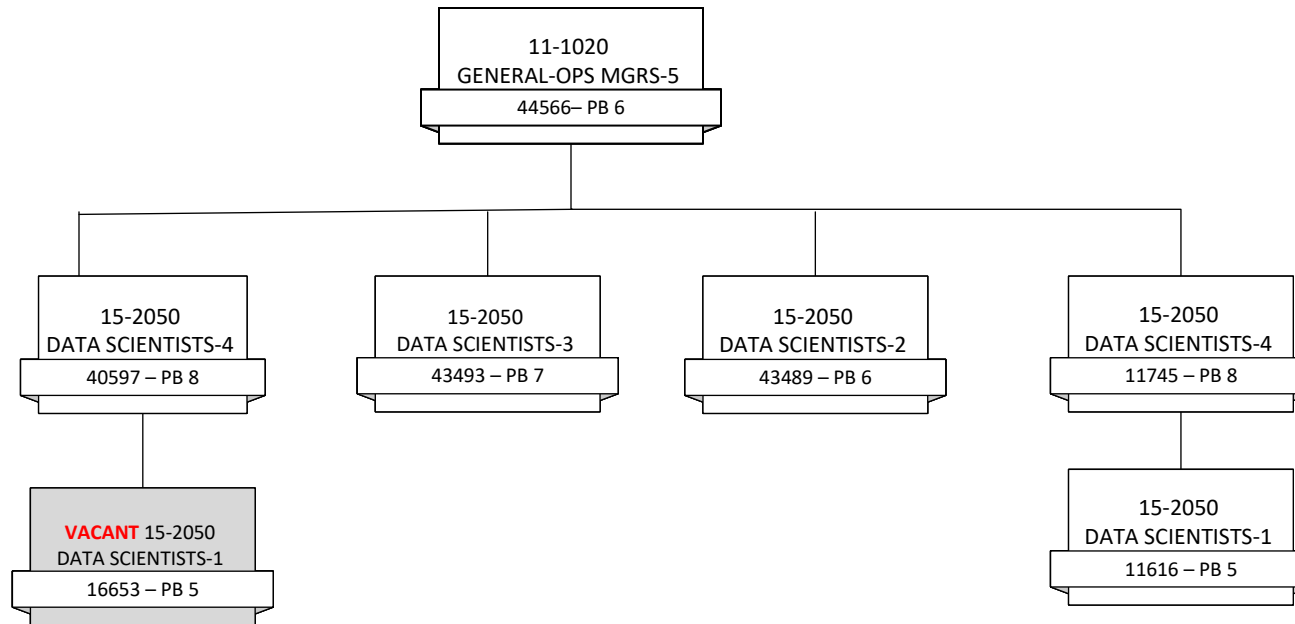
# NH Department of Health and Human Services Bureau of Professional and Strategic Development





# NH Department of Health and Human Services

## Bureau of Evaluation, Analytics, and Reporting



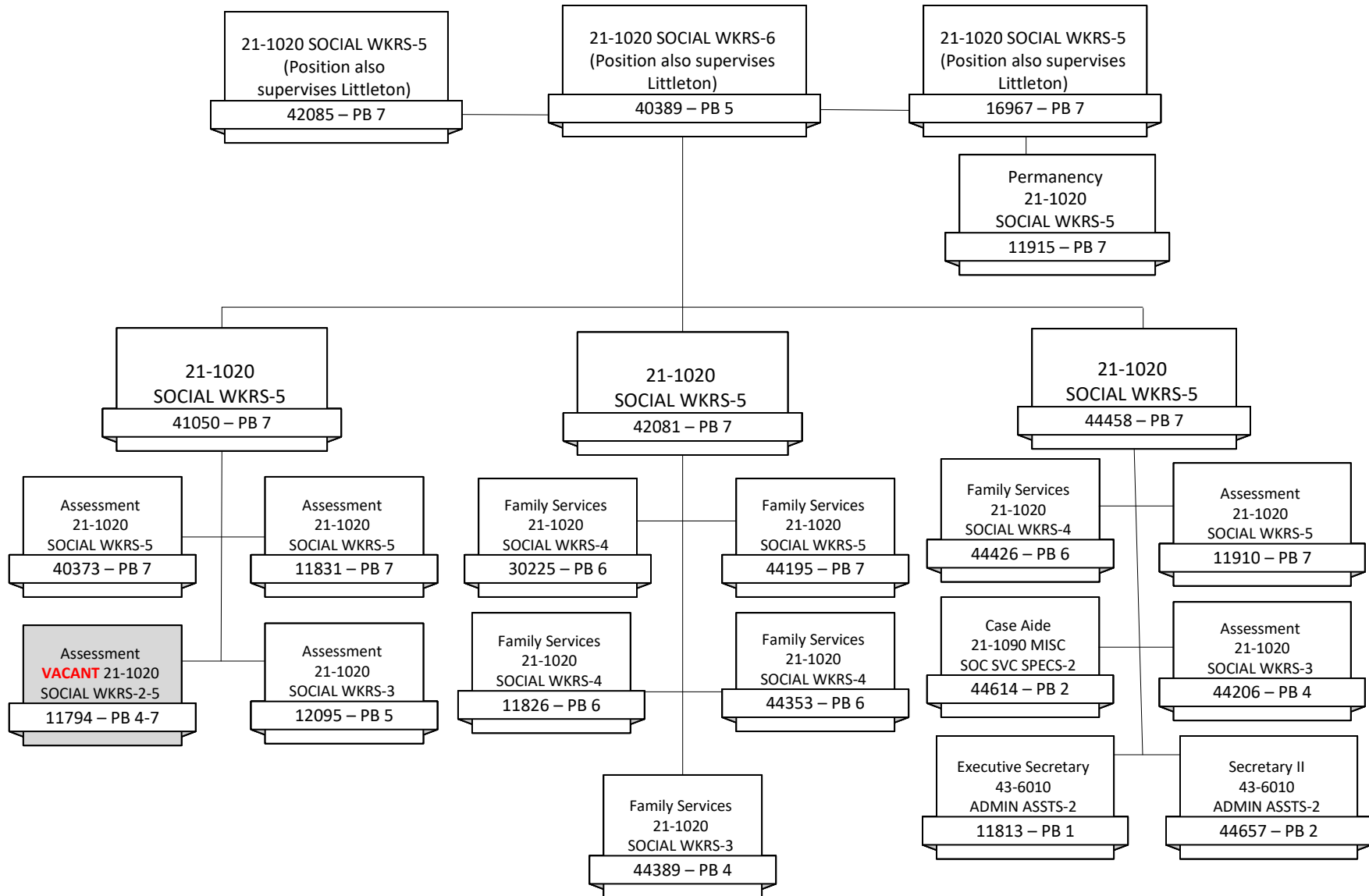




# NH Department of Health and Human Services

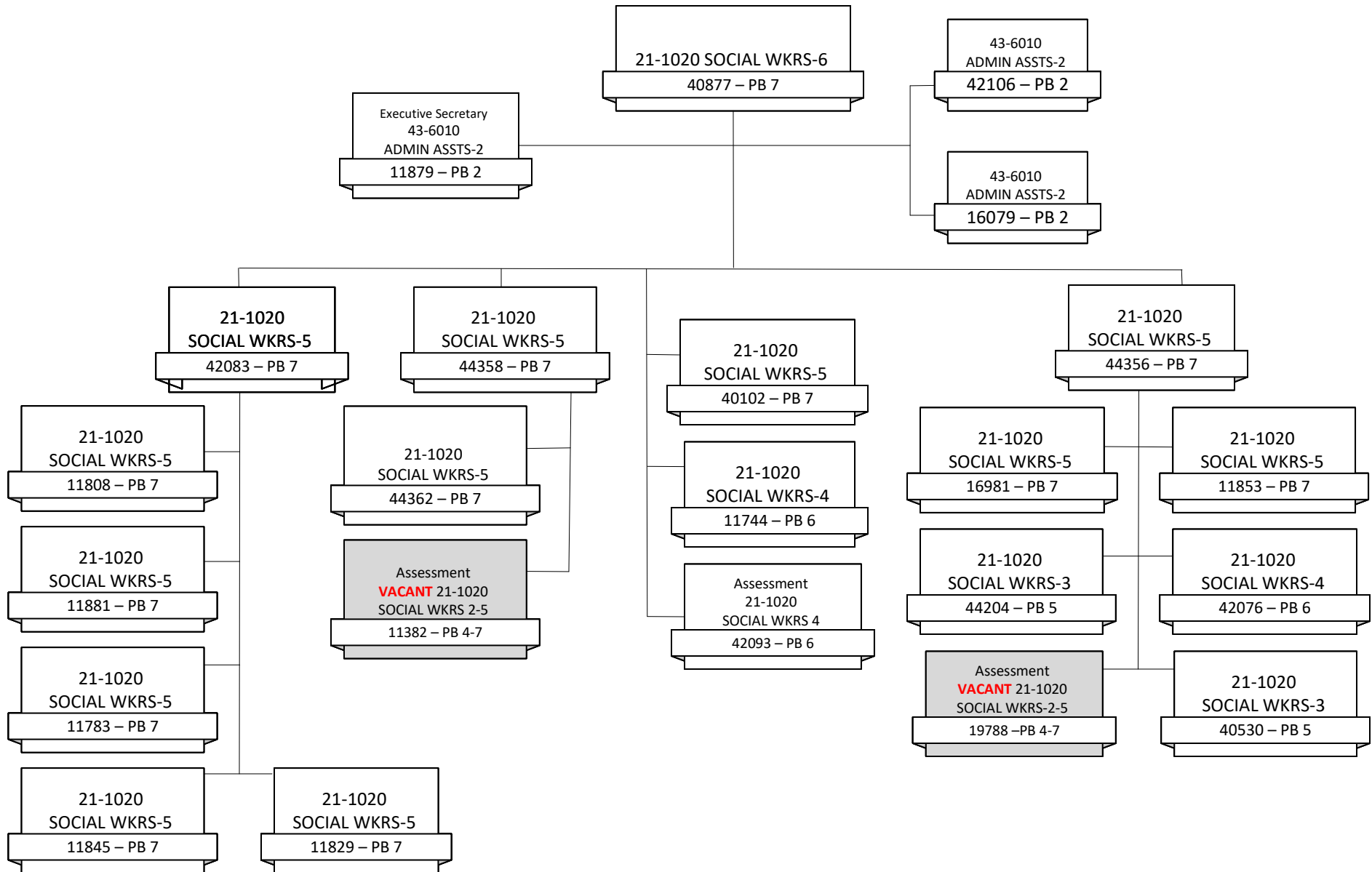
## Berlin District Office

CPSW = Child Protective Service Worker





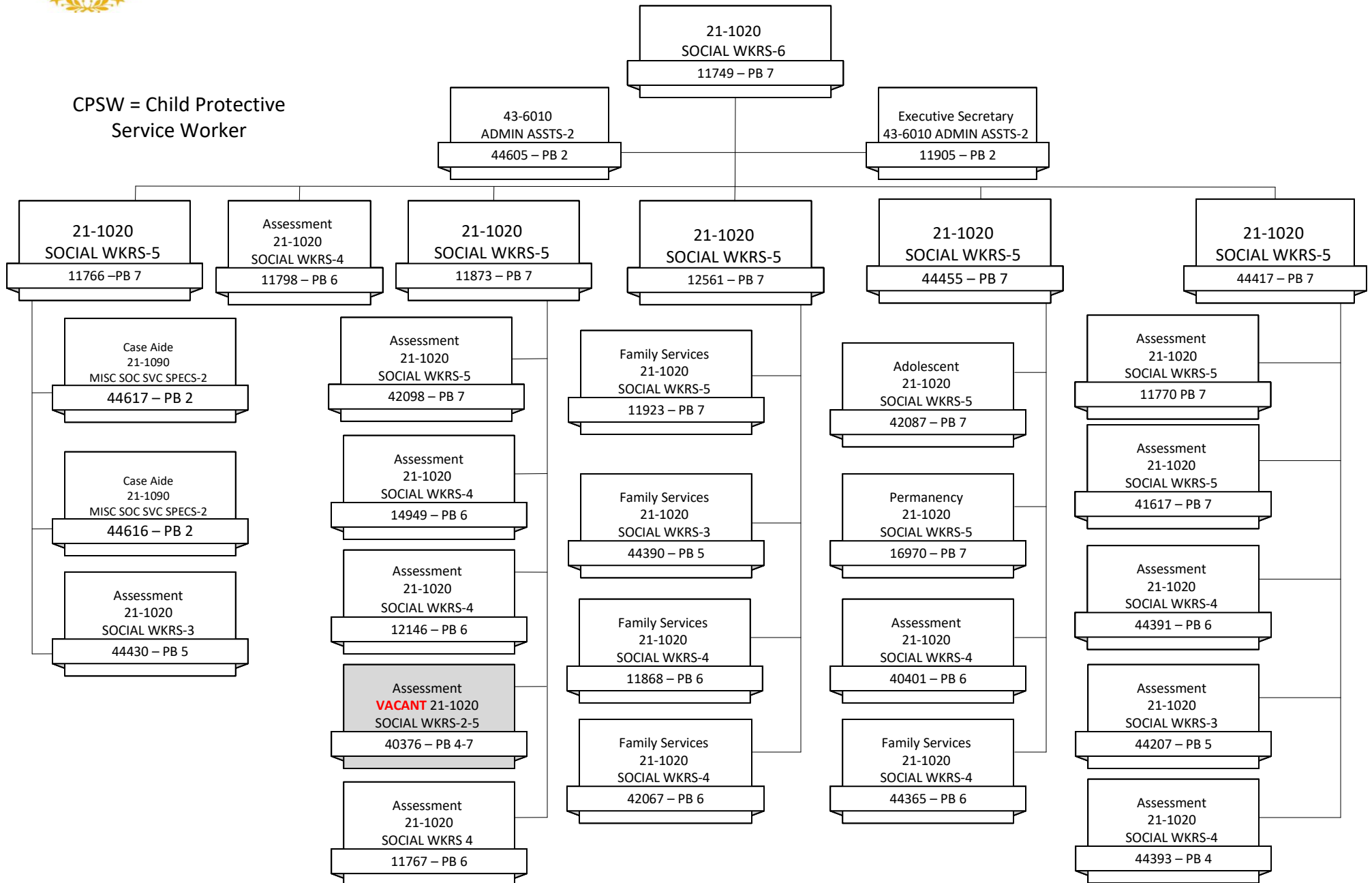
# NH Department of Health and Human Services Central Intake Office





# NH Department of Health and Human Services Claremont District Office

CPSW = Child Protective  
Service Worker

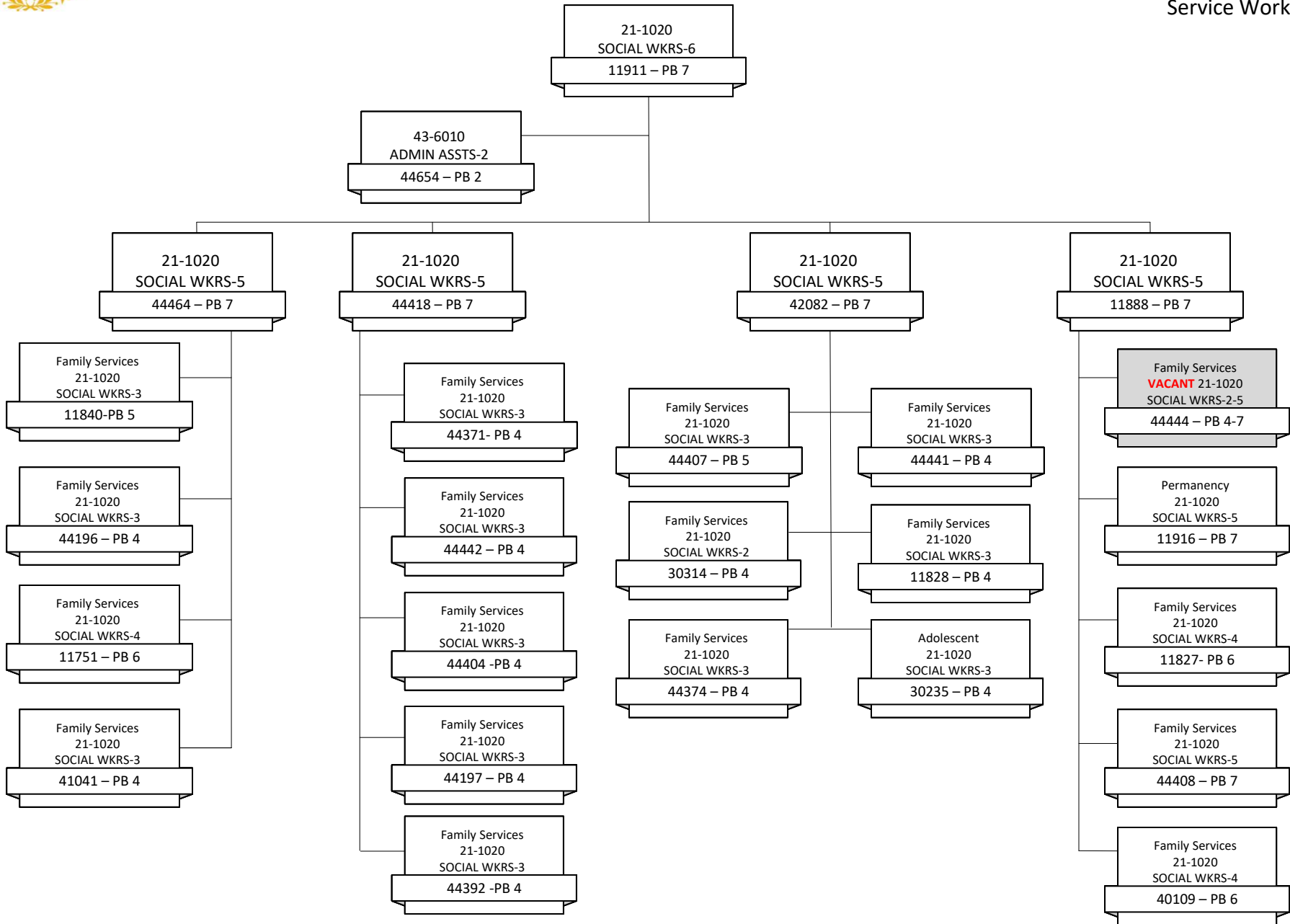




# NH Department of Health and Human Services

## Concord District Office (Part I)

CPSW = Child Protective Service Worker

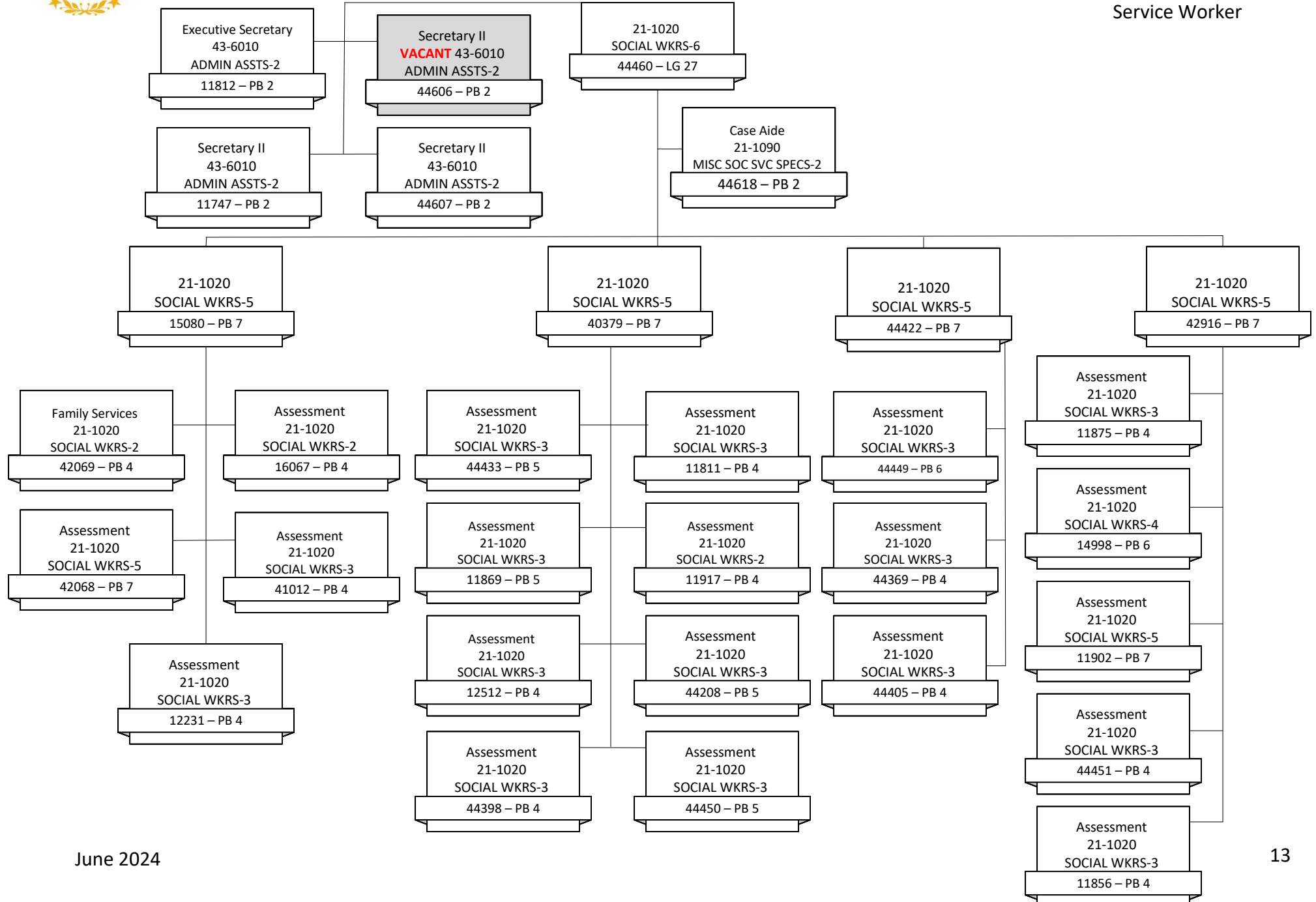




# NH Department of Health and Human Services

## Concord District Office (Part II)

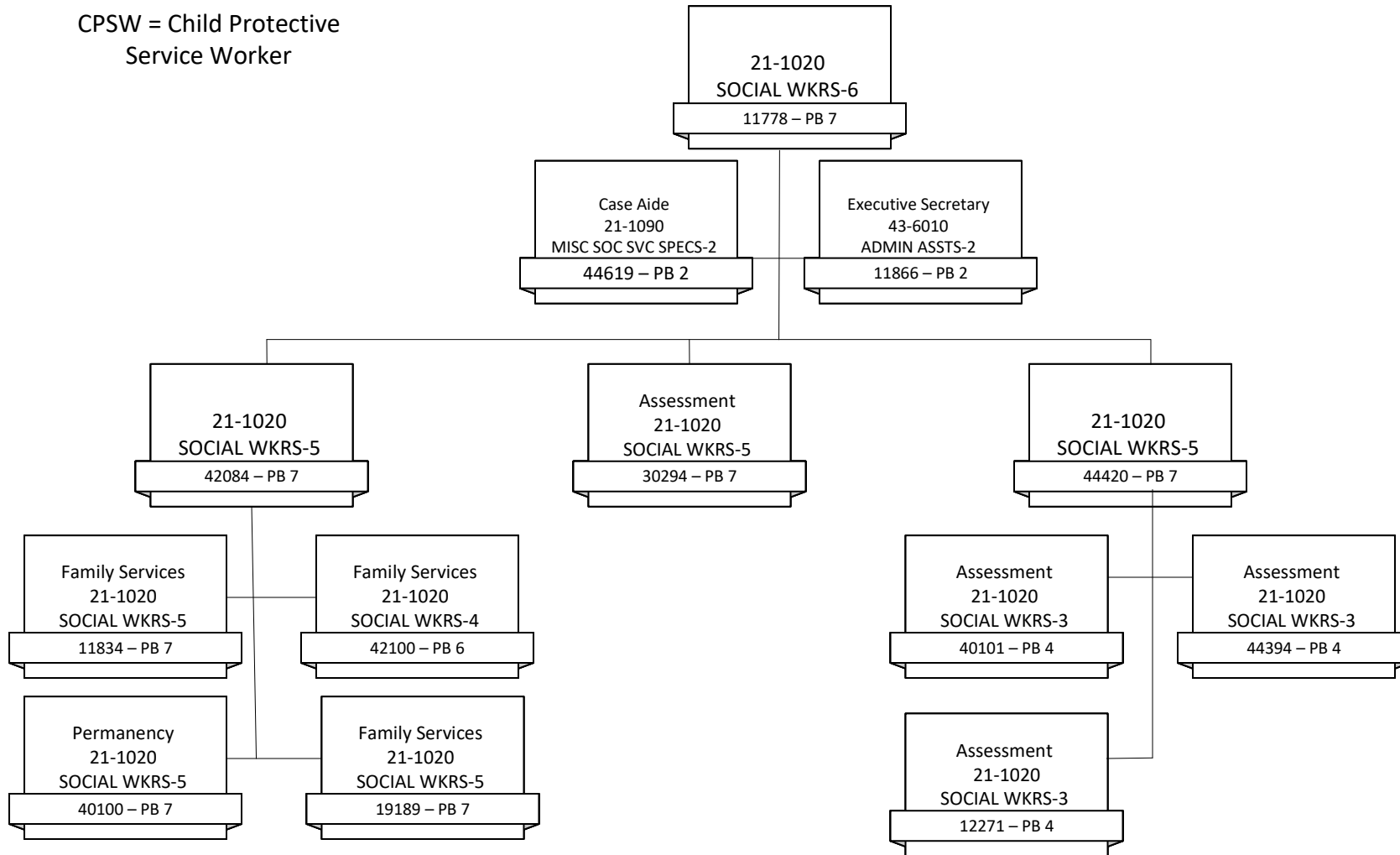
CPSW = Child Protective Service Worker





# NH Department of Health and Human Services Conway District Office

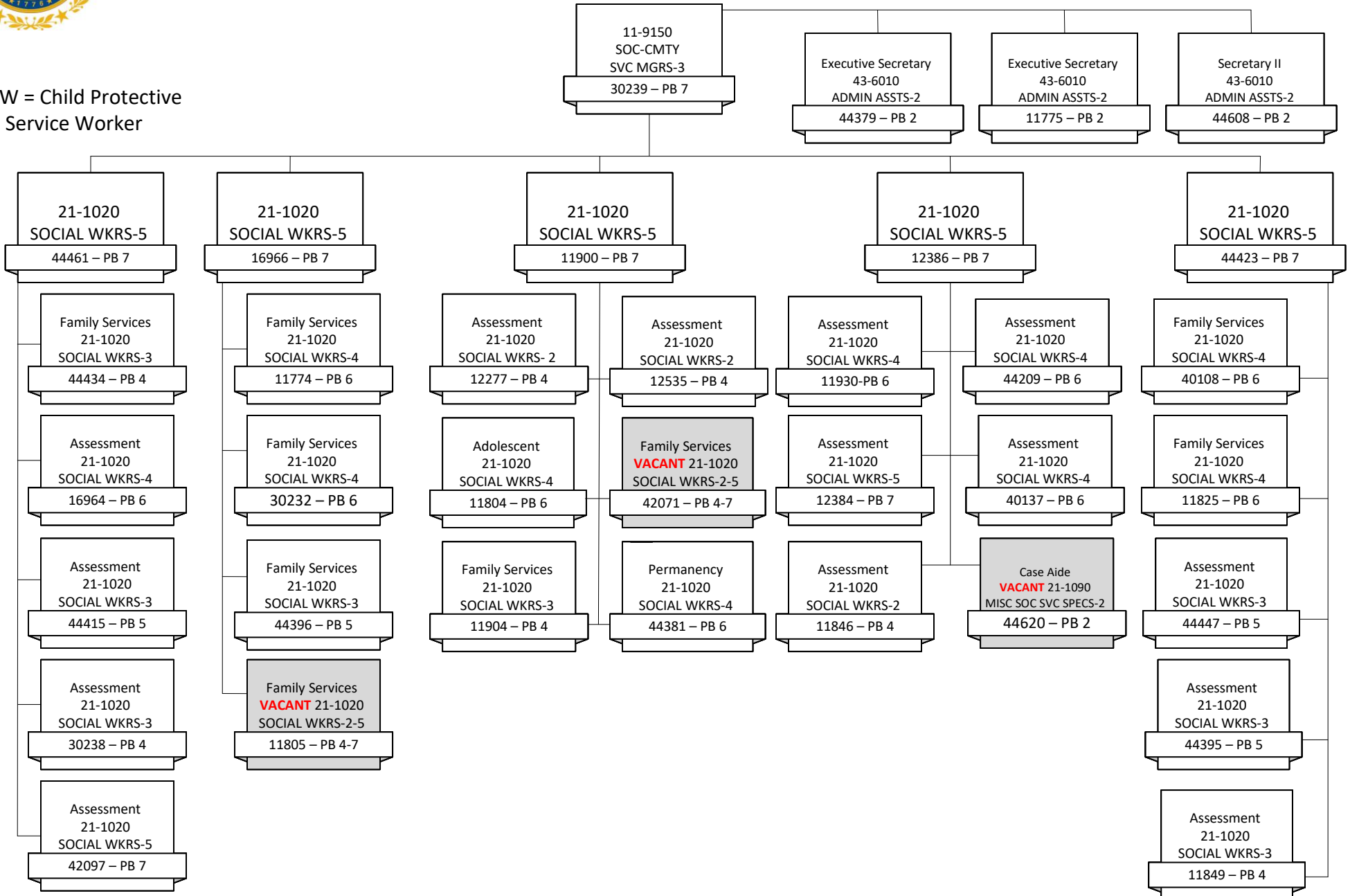
CPSW = Child Protective  
Service Worker





# NH Department of Health and Human Services Keene District Office

CPSW = Child Protective  
Service Worker

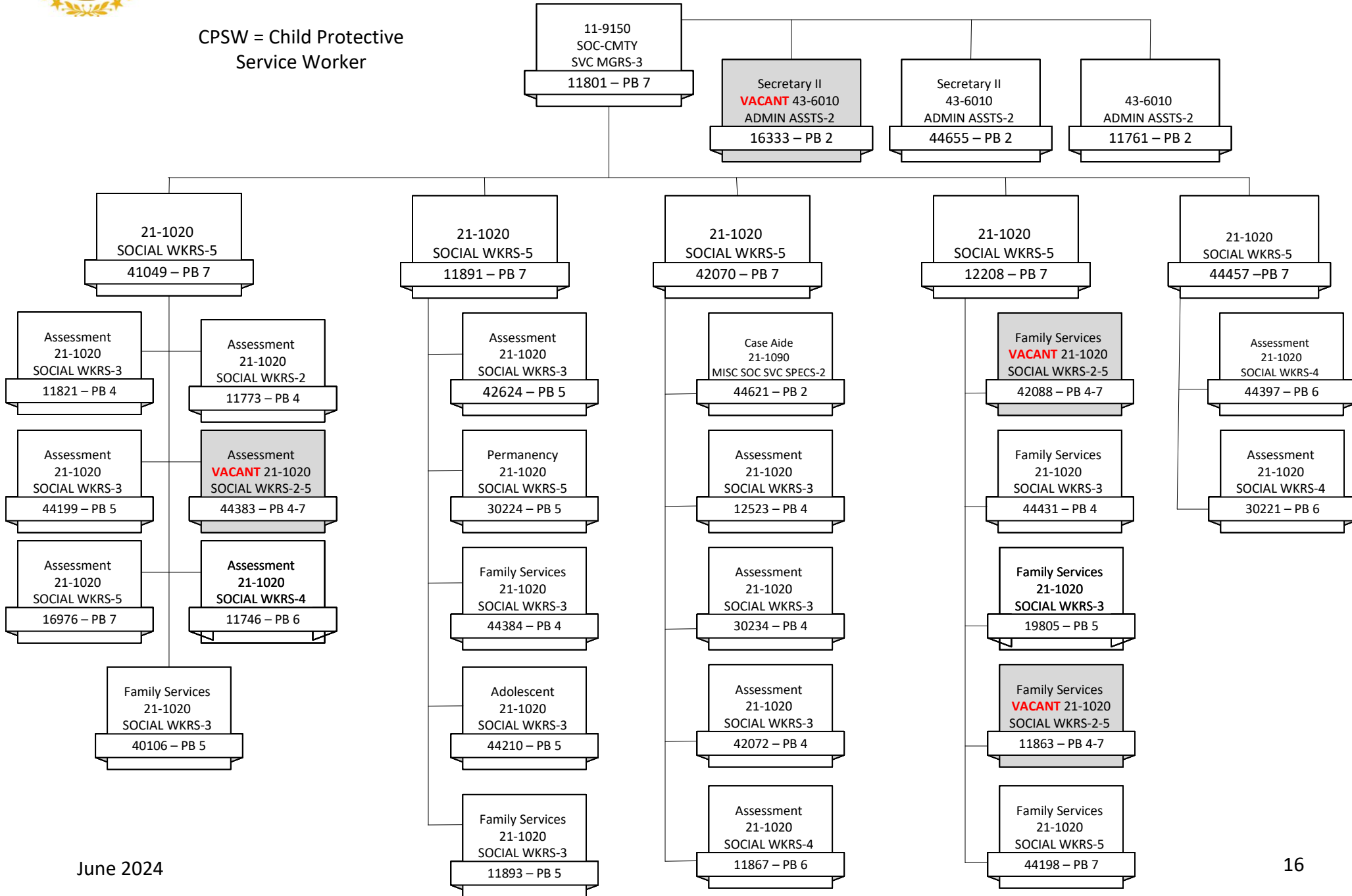




# NH Department of Health and Human Services

## Laconia District Office

CPSW = Child Protective  
Service Worker



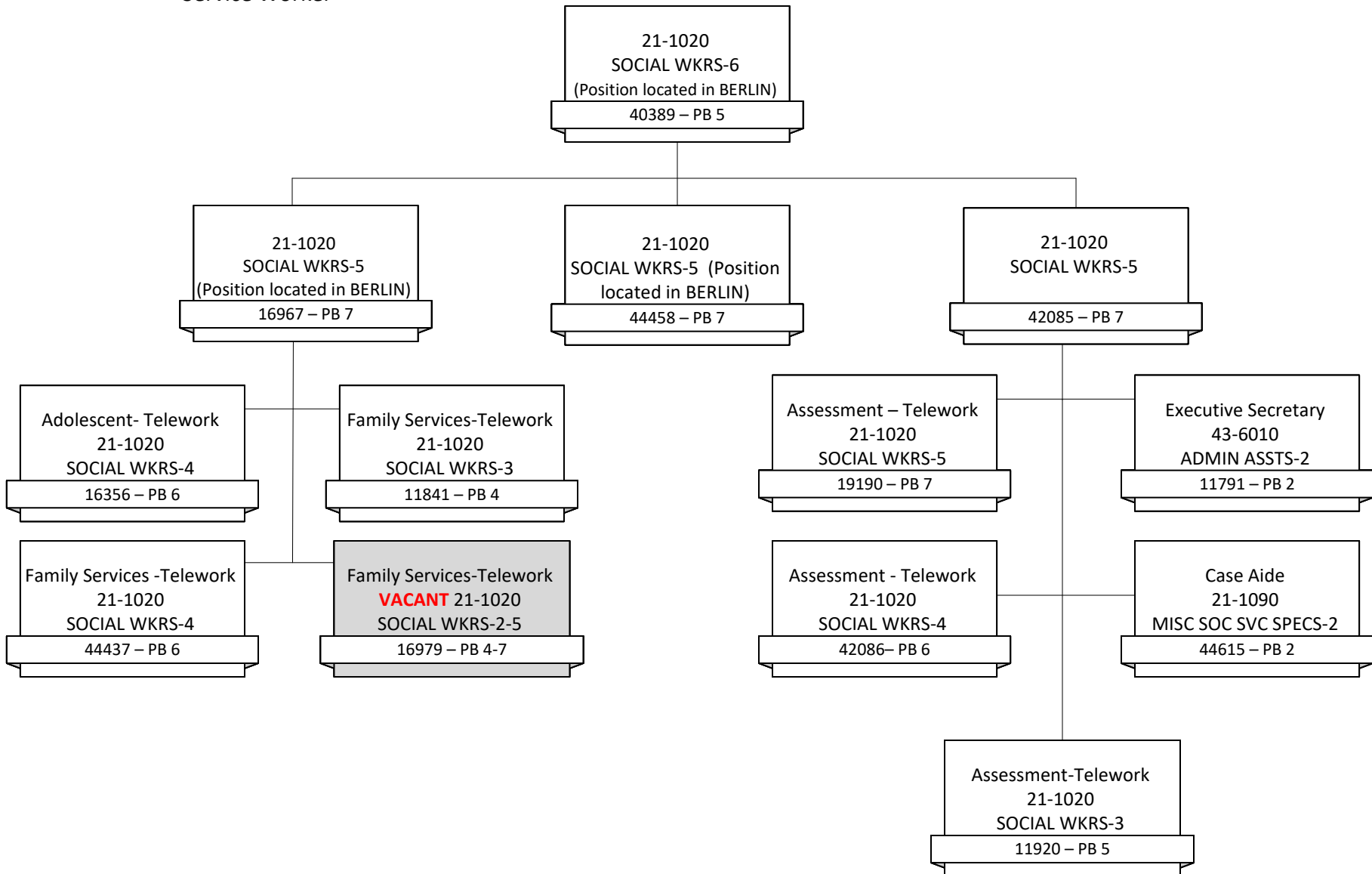




# NH Department of Health and Human Services

## Littleton District Office

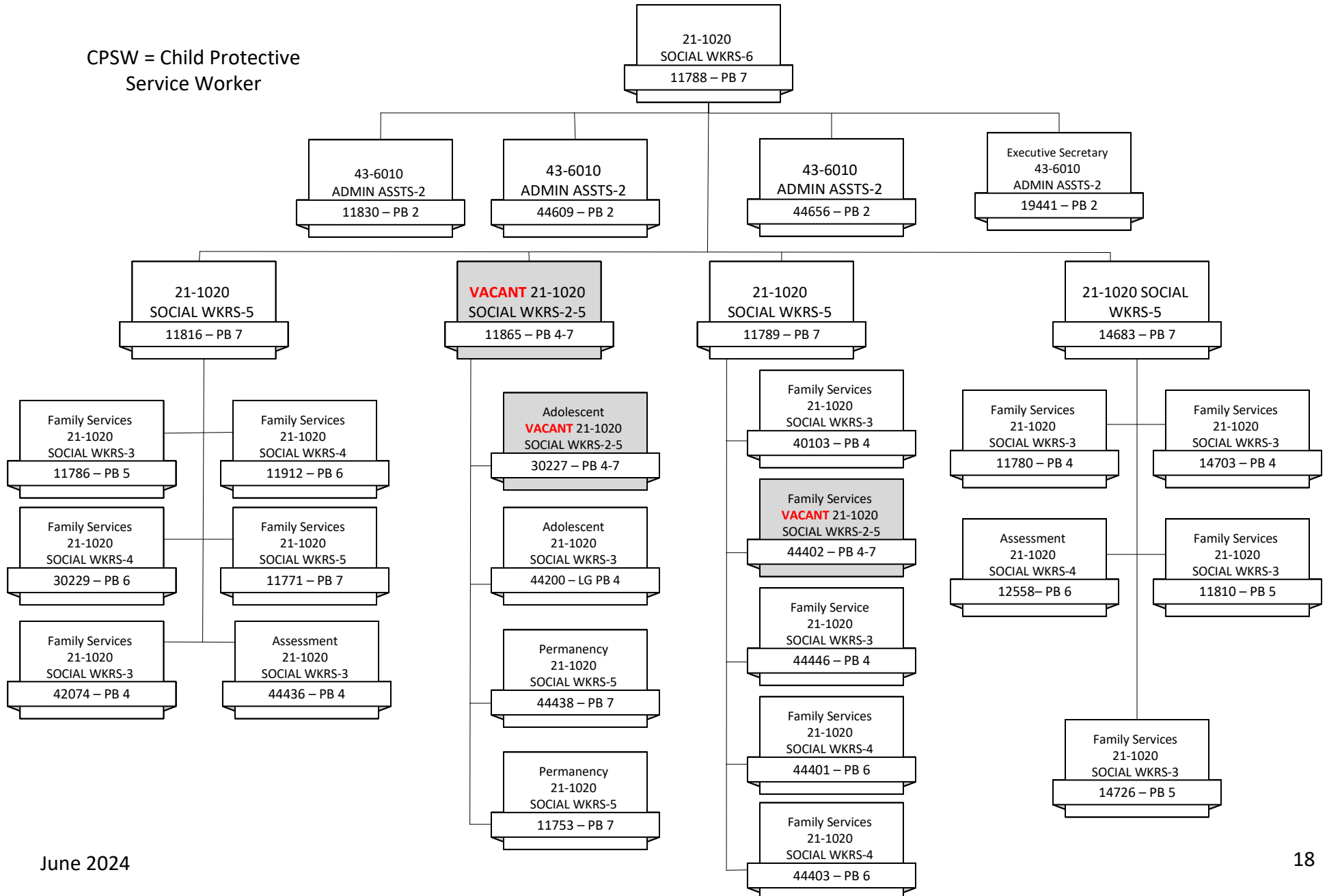
CPSW = Child Protective  
Service Worker





# NH Department of Health and Human Services Manchester District Office (Part I)

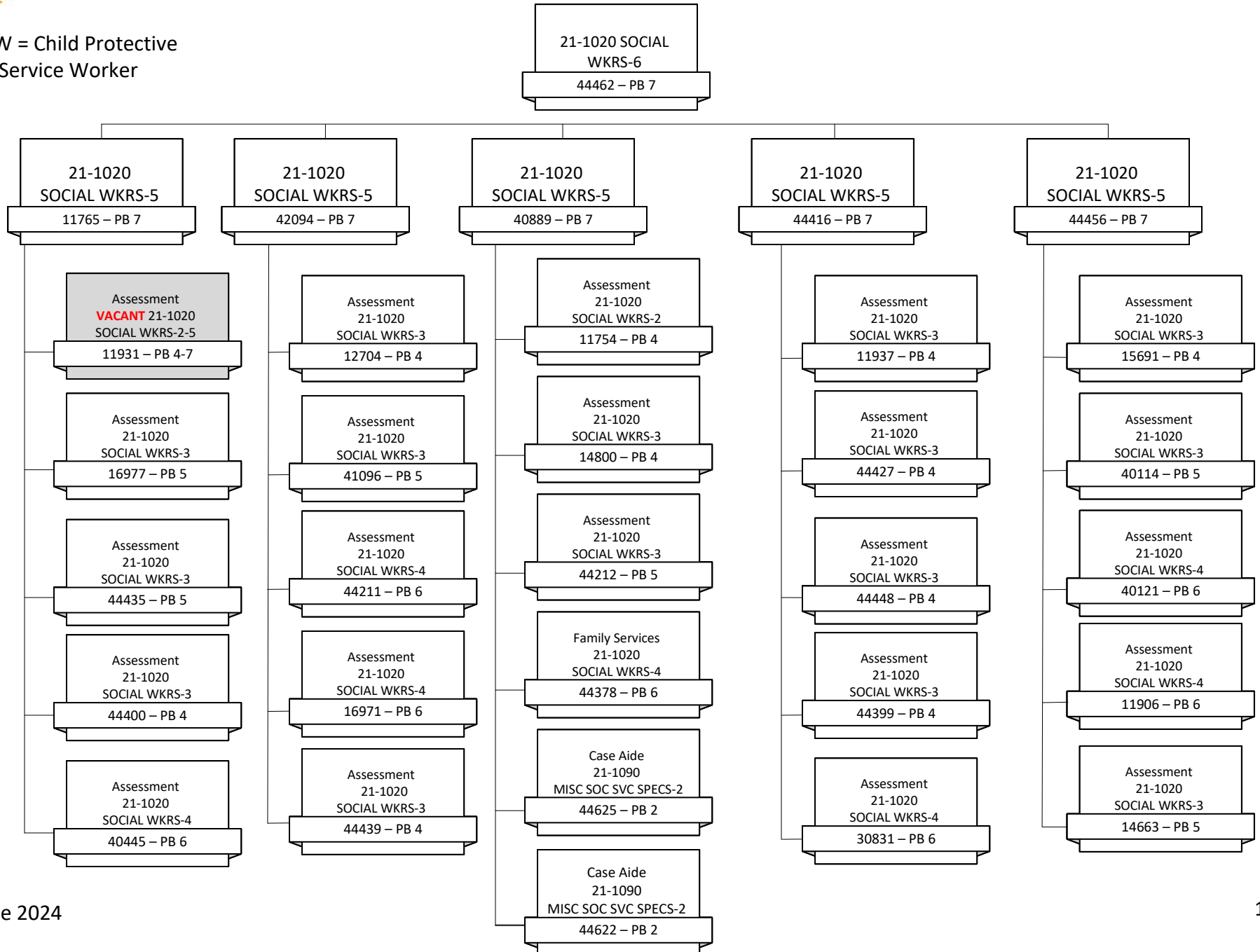
CPSW = Child Protective  
Service Worker





# NH Department of Health and Human Services Manchester District Office (Part II)

CPSW = Child Protective  
Service Worker

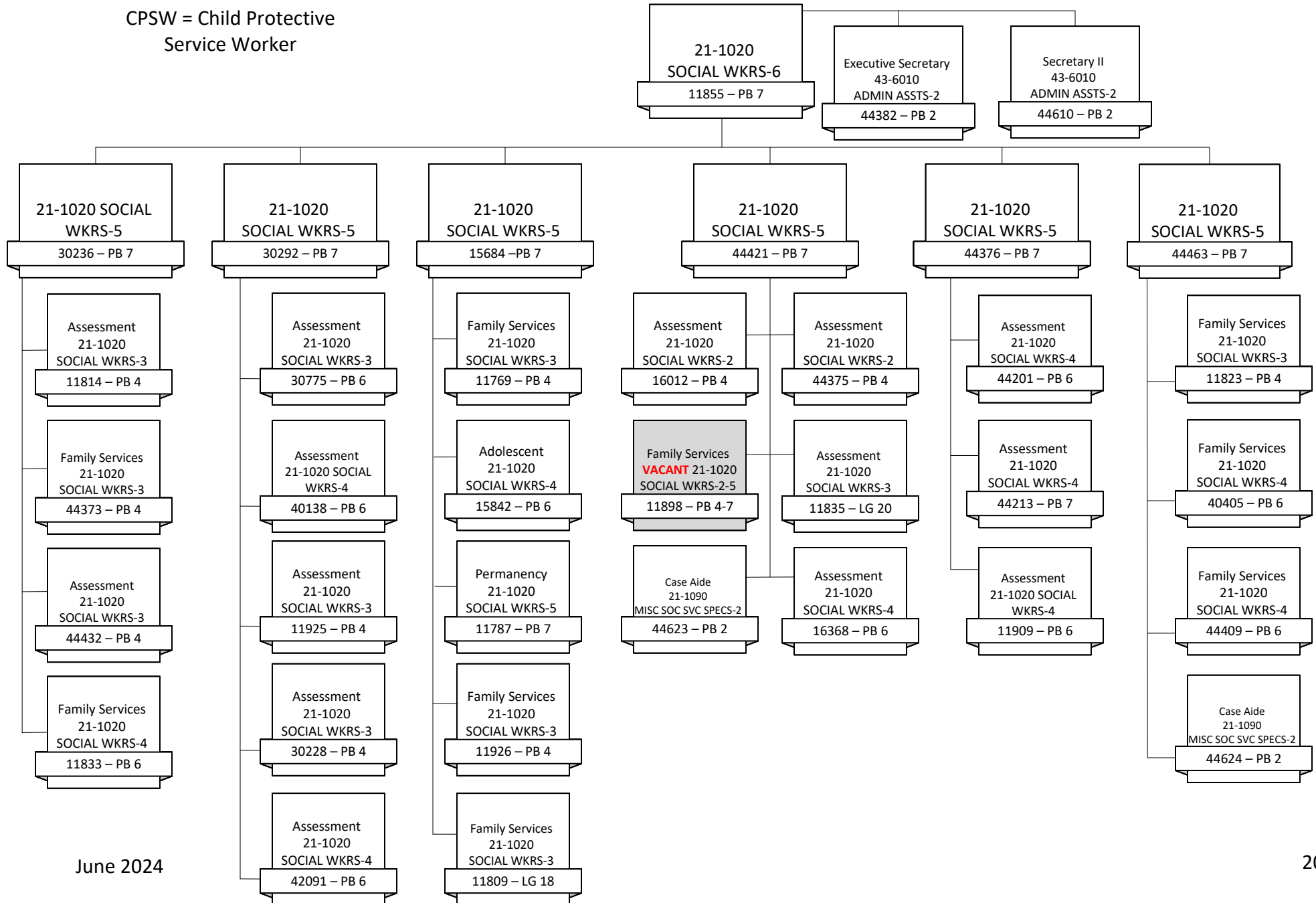




# NH Department of Health and Human Services

## Rochester District Office

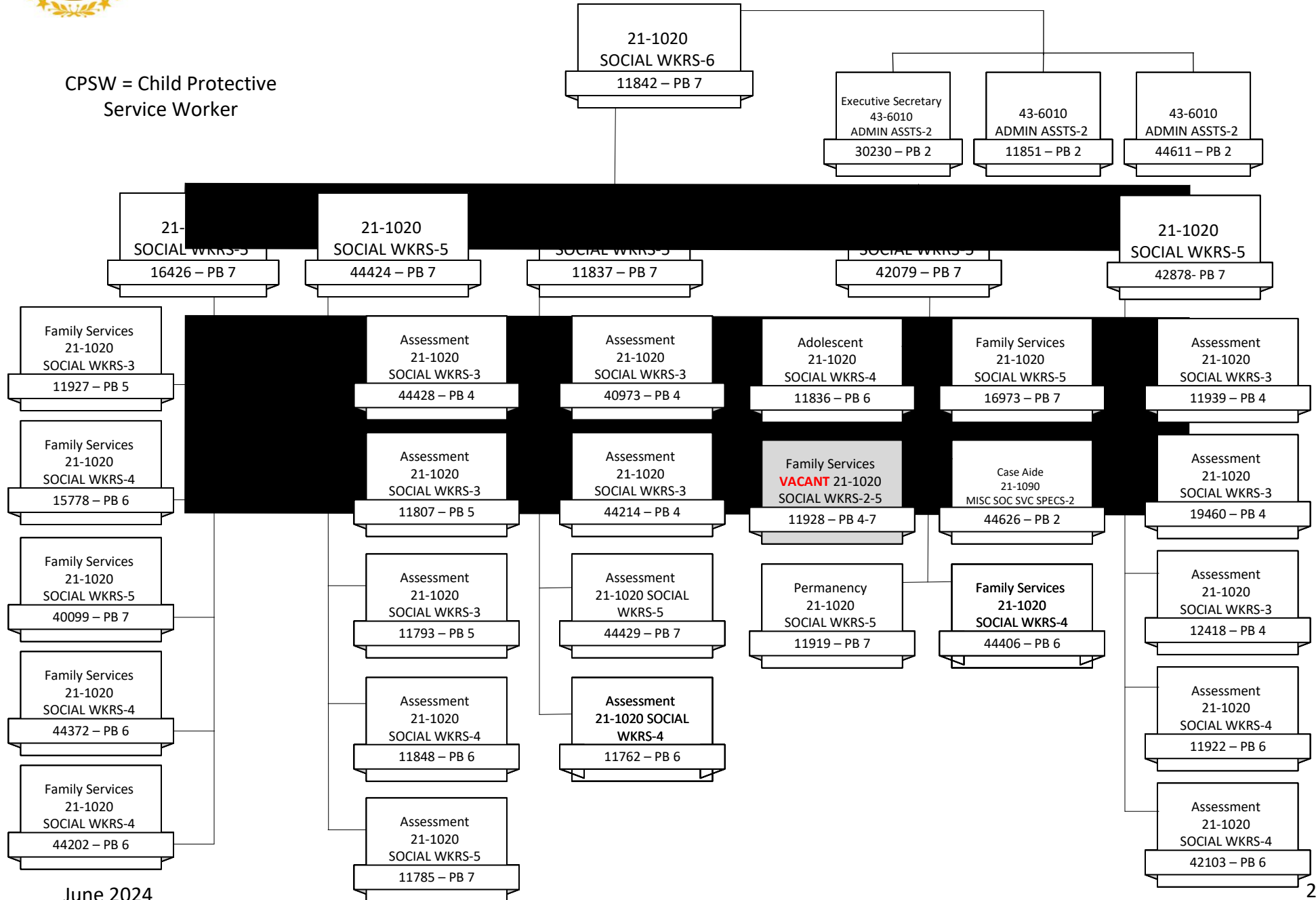
CPSW = Child Protective  
Service Worker





# NH Department of Health and Human Services Seacoast District Office

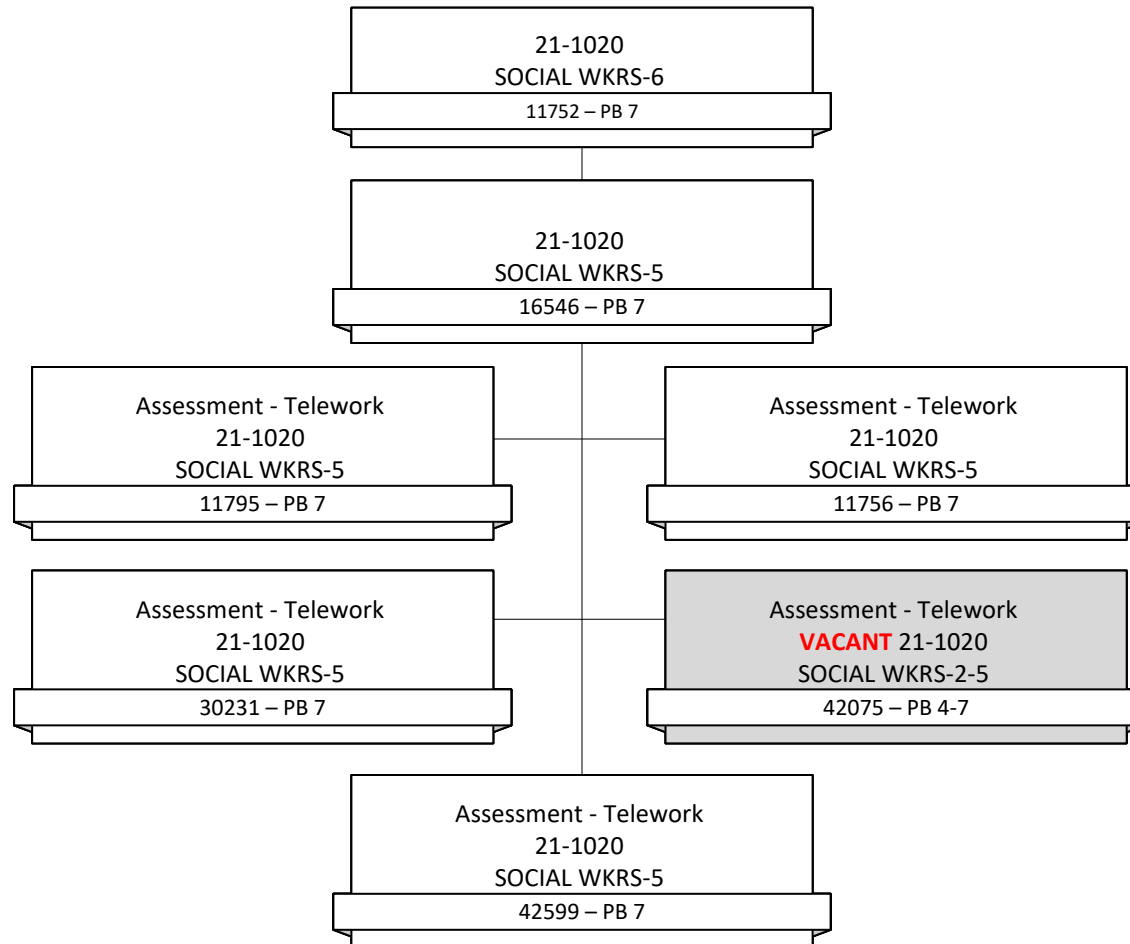
CPSW = Child Protective  
Service Worker



June 2024



# NH Department of Health and Human Services Southern District Office Telework Unit

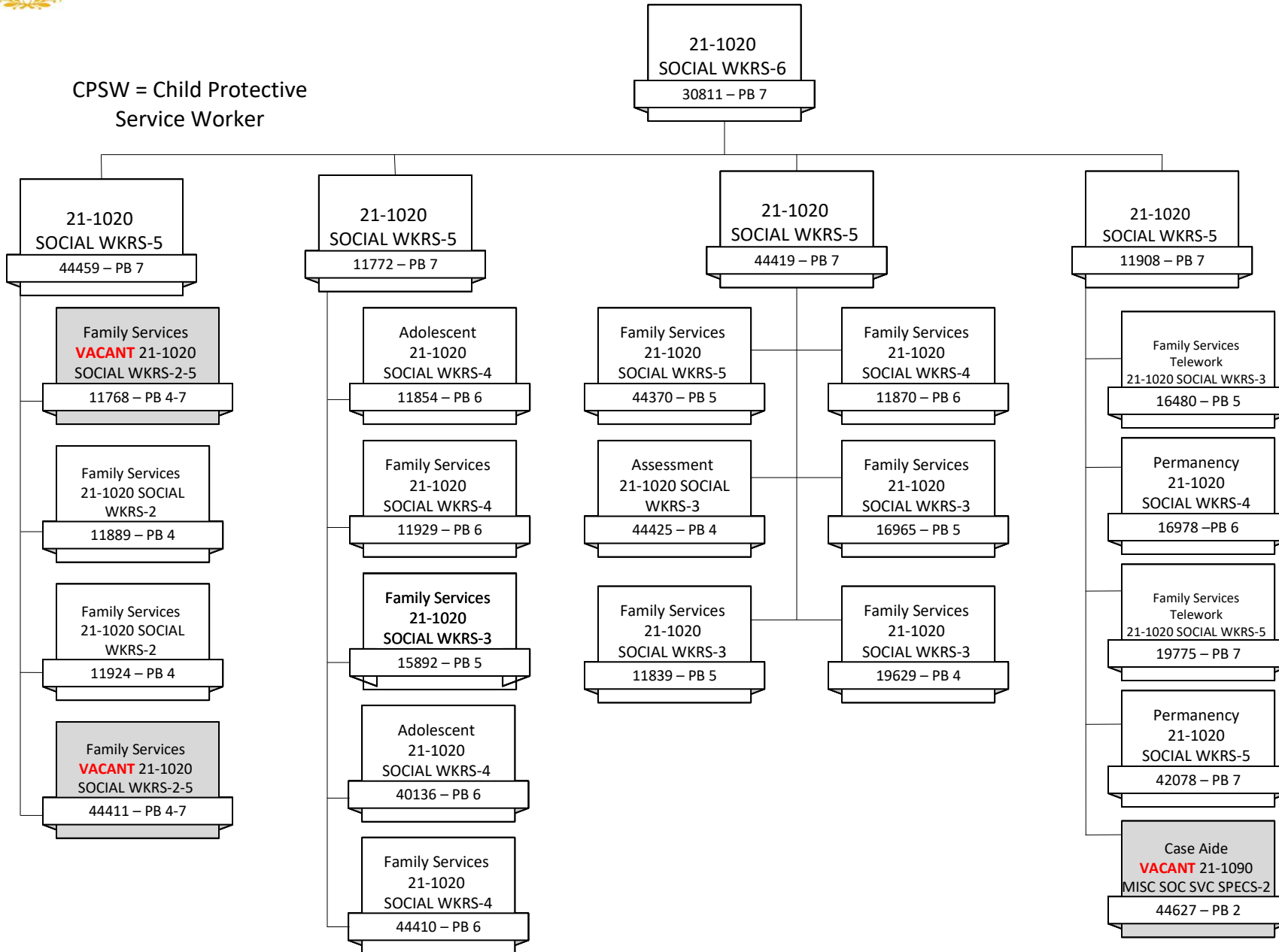




# NH Department of Health and Human Services

## Southern District Office (Part I)

CPSW = Child Protective Service Worker





# NH Department of Health and Human Services

## Southern District Office (Part II)

CPSW = Child Protective Service Worker

