



New Hampshire Drug Monitoring Initiative

New Hampshire Information & Analysis Center

Phone: (603) 223.3859

NH.IAC@dos.nh.gov

Fax: (603) 271.0303



NHIAC Product #: 2023-05730

2022 Overview Report

20 July 2023

Purpose: The NH Drug Monitoring Initiative (DMI) is a holistic strategy to provide awareness and combat drug distribution and abuse. In line with this approach the DMI will obtain data from various sources (to include, but not limited to, Public Health, Law Enforcement, and EMS) and provide monthly products for stakeholders as well as situational awareness releases as needed.

2022 Overview—Drug Environment Report—UNCLASSIFIED

Table of Contents:

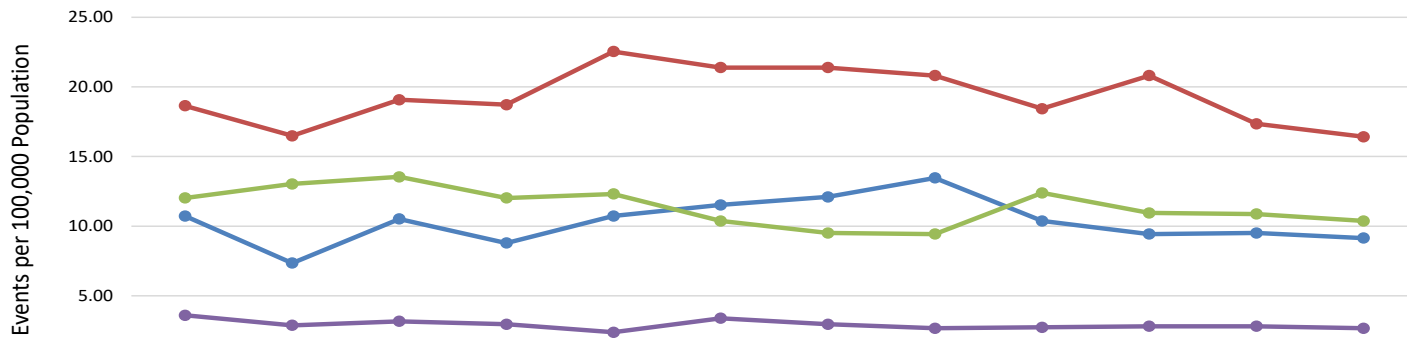
<u>Section Title</u>	<u>Page #</u>
Overview	2
Drug Overdose Deaths <i>Source: NH Office of the Chief Medical Examiner</i>	3
EMS Narcan Administration Incidents <i>Source: NH Bureau of Emergency Medical Services (EMS)</i>	7
Opioid Related Emergency Department Visits <i>Source: NH Division of Public Health Services</i>	10
Treatment Admissions <i>Source: NH Bureau of Drug & Alcohol Services</i>	12

- ⇒ The monthly online DMI viewer can be found at: <https://nhview.desc.nh.gov/iac/dmi/>
- ⇒ Population data source: [2021 Census | State Data Center | NH Office of Strategic Initiatives](#)
 - Year/month overview charts are based on annual estimates from the above website.
 - County charts are based on a 2021 estimated population of each county.

Overview: Trends for EMS Naloxone Incidents, Opioid Related ED Visits, Treatment Admissions, and Overdose Deaths:



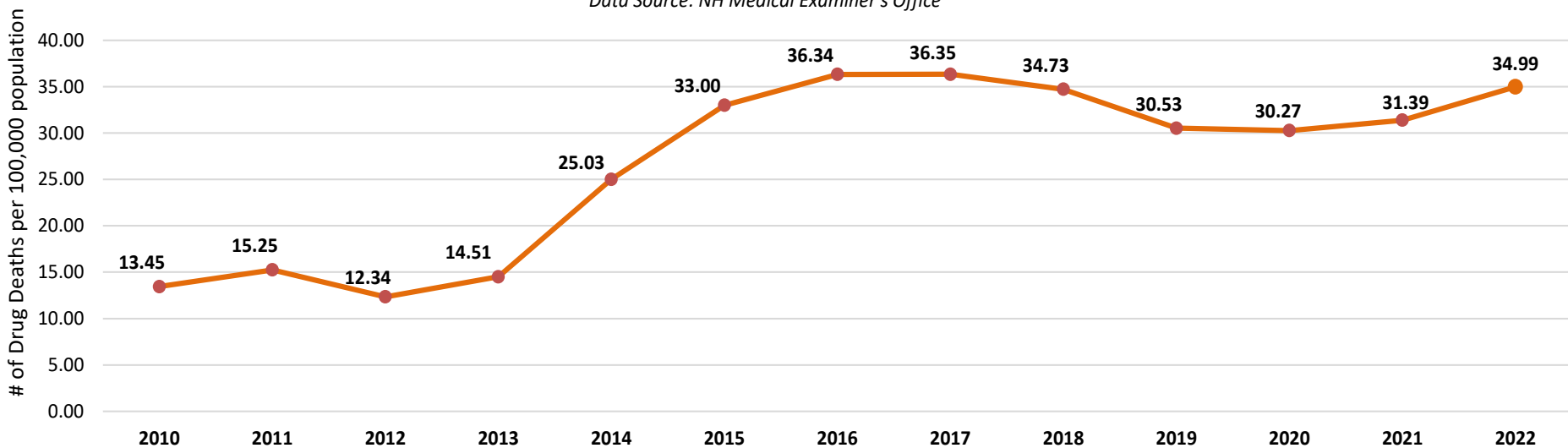
EMS Naloxone Administration, Opioid Related ED Visits, and Treatment Admissions per 100,000 Population January 2022 - December 2022



Month	EMS Naloxone	Opioid Related Ed Visits	Opioid/Opiate, Methamphetamine, & Cocaine/Crack Treatment Admissions	Drug Overdose Deaths
January	10.73	18.65	12.02	3.60
February	7.34	16.49	13.03	2.88
March	10.51	19.08	13.54	3.17
April	8.78	18.72	12.02	2.95
May	10.73	22.54	12.31	2.38
June	11.52	21.38	10.37	3.38
July	12.10	21.38	9.50	2.95
August	13.46	20.81	9.43	2.66
September	10.37	18.43	12.38	2.74
October	9.43	20.81	10.94	2.81
November	9.50	17.35	10.87	2.81
December	9.14	16.42	10.37	2.66

Drug Overdose Deaths By Year

Data Source: NH Medical Examiner's Office



Drug Overdose Deaths:

Data Source: NH Medical Examiner's Office

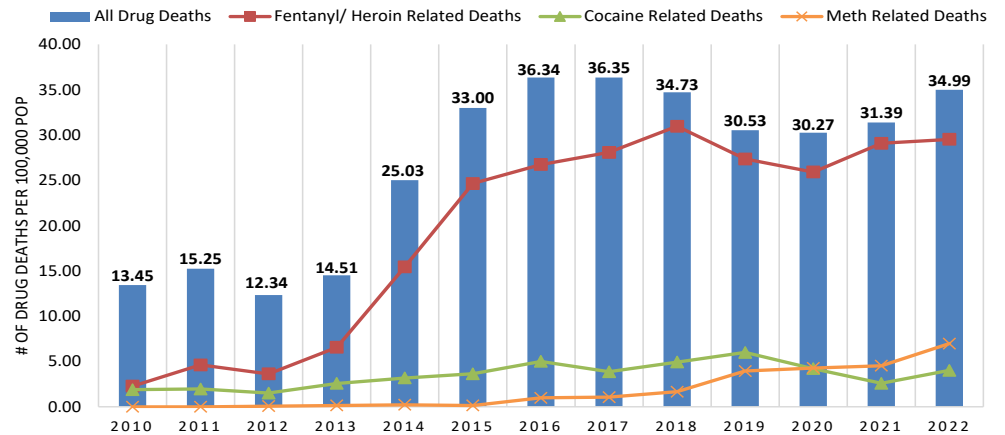
Trends:

- There were 486 drug overdose deaths in 2022, an 11% increase from 2021.
- Of the 486 confirmed drug overdose deaths in 2022, 426 were involving opioids/opiates. 410 specifically were fentanyl-class related deaths. 459 of these deaths were accidents, 23 were suicides and there were 4 deaths where the manner of death could not be determined.
- Coos County had the greatest increase in drug overdose deaths, with a 75% increase, while Belknap County had the greatest decrease, with 52%.
- The age group with the largest number of drug overdose deaths is 30-39 year olds, with 30%.

***** IMPORTANT DATA NOTES *****

- Analysis is based on county where the drugs are suspected to have been used.

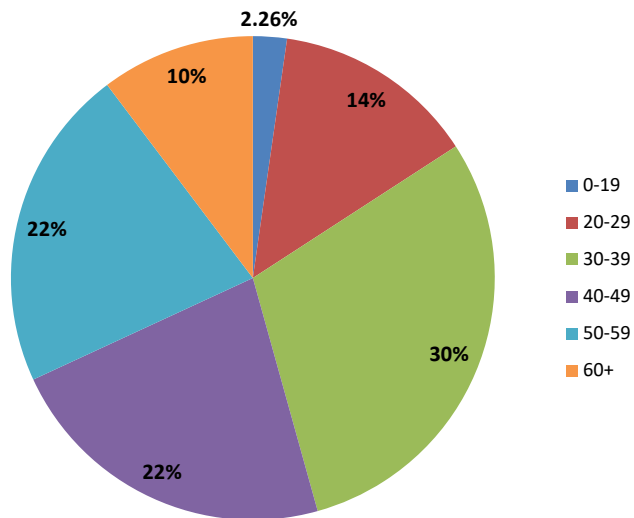
OVERDOSE DEATHS BY YEAR PER 100,000 POPULATION



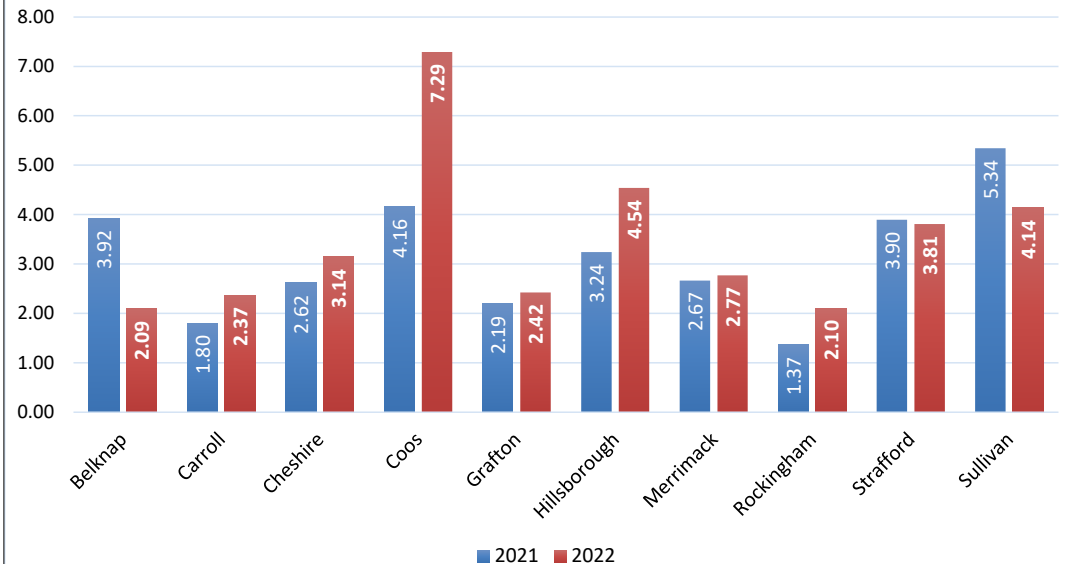
+ COCAINE, METH, AND FENTANYL/HEROIN RELATED DEATHS ARE NOT MUTUALLY EXCLUSIVE, SEVERAL DEATHS INVOLVED MULTIPLE CATEGORIES

Overdose Deaths by Age 2022

Data Source: NH Medical Examiner's Office



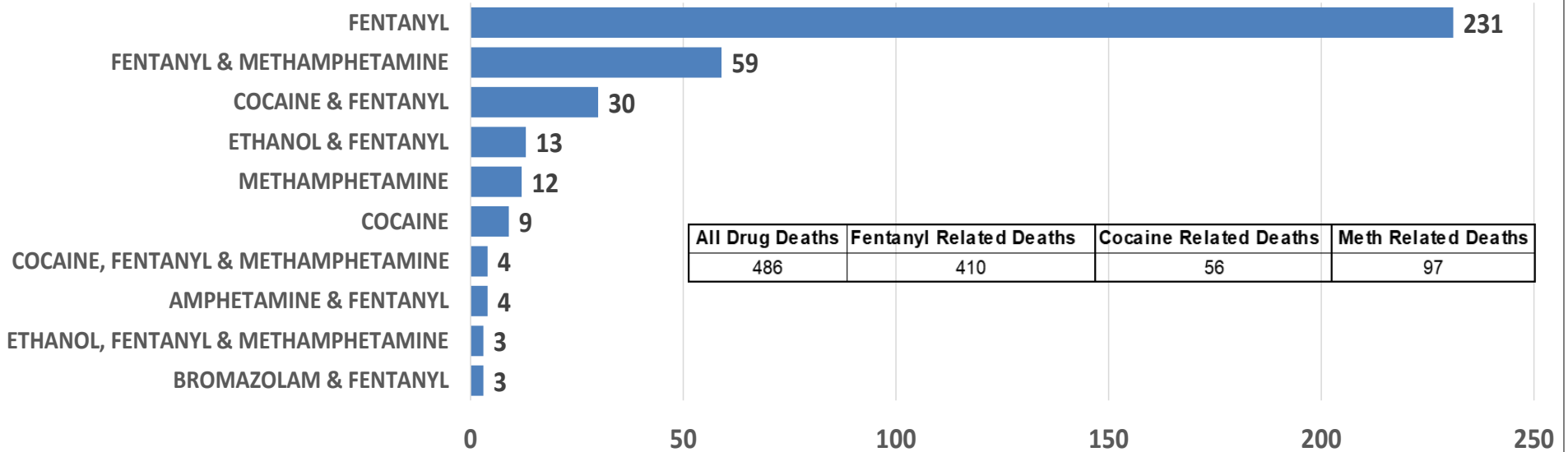
2021 vs. 2022 Overdose Deaths by County per 10,000 Population



Drug Overdose Deaths (Continued):

Data Source: NH Medical Examiner's Office

Top Cocaine, Methamphetamine and Fentanyl Combinations in 2022 Drug Overdose Deaths



2022 Cocaine, Methamphetamine, and/or Fentanyl Class Combination Related Drug Deaths that were noted once or twice*

4-ANPP, AMPHETAMINE, FENTANYL, HYDROXYZINE & METHAMPHETAMINE	FENTANYL & ISOTONITAZENE	ACETYL FENTANYL, ETHANOL & FENTANYL	AMPHETAMINE, FENTANYL & METHAMPHETAMINE	BUPRENORPHINE, FENTANYL & METHAMPHETAMINE	COCAINE & PARA-FLUOROFENTANYL	ETHANOL, FENTANYL & PAROXETINE	FENTANYL & MYTRAGININE
ACETYL FENTANYL & FENTANYL	FENTANYL & PARA-FLUOROFENTANYL	ACETYL FENTANYL, FENTANYL, METHAMPHETAMINE & PARA-FLUOROFENTANYL	AMPHETAMINE, FENTANYL, METHAMPHETAMINE & SERTRALINE	BUPROPION & METHAMPHETAMINE	COCAINE, DULOXETINE, FENTANYL, GABAPENTIN, METHAMPHETAMINE & METHYLPHENIDATE	ETHANOL, OXYCODONE, FENTANYL & XYLAZINE	FENTANYL, METHAMPHETAMINE & PARA-FLUOROFENTANYL
ALCOHOL & FENTANYL	FENTANYL, GABAPENTIN, METHADONE & METHAMPHETAMINE	AMLODIPINE & FENTANYL	AMPHETAMINES, ETHANOL & FENTANYL	COCAETHYLENE, COCAINE, ETHANOL & FENTANYL	COCAINE, FENTANYL & OXYCODONE	ETIZOLAM, FENTANYL & FLUBROMAZOLAM	HEROIN, FENTANYL, & METHAMPHETAMINE
BROMAZEPAM, CYCLOBENZAPRINE, FENTANYL, GABAPENTIN & METHAMPHETAMINE	FENTANYL, METHAMPHETAMINE & PHENYLPROPANOLAMINE	AMPHETAMINE, ARIPIRAZOLE & FENTANYL	BROMAZELAM, FENTANYL, FLUBROMAZEPAM & XYLAZINE	COCAINE & HEROIN	COCAINE, FENTANYL & PARA-FLUOROFENTANYL	FENTANYL & FLUBROMAZOLAM	METHAMPHETAMINE & OXYCODONE
4-ANPP, AMPHETAMINE, FENTANYL & METHAMPHETAMINE	4-ANPP, ETHANOL & FENTANYL	AMPHETAMINE, ETHANOL & FENTANYL	BROMAZOLAM, COCAINE & FENTANYL	COCAINE & METHAMPHETAMINE	COCAINE, FENTANYL, & METHYLENEDIOXYMETHAMPHETAMINE	FENTANYL & GABAPENTIN	DIAZEPAM, ETHANOL & FENTANYL
COCAINE, ETHANOL & FENTANYL	ACETYL FENTANYL, AMPHETAMINE, FENTANYL & METHAMPHETAMINE	AMPHETAMINE, ETHANOL, FENTANYL & METHAMPHETAMINE	BROMAZOLAM, CYCLOBENZAPRINE, FENTANYL, GABAPENTIN, METHADONE, METHAMPHETAMINE & OXYCODONE	COCAINE & MORPHINE	ETHANOL & PARA-FLUOROFENTANYL	FENTANYL & METHADONE	PARA-FLUOROFENTANYL
EPHEDRINE, FENTANYL, METHAMPHETAMINE & PHENYLPROPANOLAMINE	4-ANPP, FENTANYL & XYLAZINE	ETHANOL, FENTANYL & FLUOXETINE	ALPRAZOLAM, FENTANYL & MORPHINE	ALPRAZOLAM, COCAINE, OXYCODONE, PARA-FLUOROFENTANYL & TRAZADONE	ACETYL FENTANYL & FENTANYL	4-ANPP, AMPHETAMINE & FENTANYL	FENTANYL, METHAMPHETAMINE, METHYLENEDIOXYMETHAMPHETAMINE

*Cells filled with gray indicate combinations were noticed twice

FENTANYL, MORPHINE & OXYCODONE

Drug Overdose Deaths (Continued):

Data Source: NH Medical Examiner's Office

Drug Overdose Deaths:

Data Source: NH Medical Examiner's Office

	2014	2015	2016	2017	2018	2019	2020	2021	January	February	March	April	May	June	July	August	September	October	November	December	2022
Total	332	439	485	488	471	415	417	436	50	40	44	41	33	47	41	37	38	39	39	37	486
County																					
Belknap	17	17	16	27	29	16	14	25	2	1	1	0	1	1	1	1	2	2	1	0	13
Carroll	9	22	16	12	13	11	13	9	1	0	0	1	1	2	1	1	0	1	2	2	12
Cheshire	17	11	20	17	32	19	15	20	5	1	1	3	3	2	2	1	1	1	2	2	24
Coos	9	14	10	12	5	6	8	13	3	0	3	1	2	5	2	1	2	1	2	1	23
Grafton	17	13	16	26	17	24	13	20	2	5	1	2	0	3	3	2	1	1	1	1	22
Hillsborough	106	178	199	195	171	155	145	137	20	20	14	16	9	12	19	18	17	20	13	16	194
Merrimack	40	39	43	43	51	47	39	41	4	2	5	5	3	5	4	4	3	2	4	2	43
Rockingham	64	89	90	97	89	73	70	43	4	6	8	7	4	8	4	2	5	7	7	5	67
Strafford	40	47	55	54	50	56	49	51	4	1	7	3	4	6	3	5	5	3	4	5	50
Sullivan	4	8	9	4	7	7	9	23	2	1	1	3	4	2	1	0	2	0	1	1	18
Out of State	3	0	2	0	6	1	0	4	1	1	1	0	0	1	1	1	0	1	0	2	9
Undetermined	0	0	9	1	1	0	42	50	2	2	2	0	2	0	0	1	0	0	2	0	11
Gender																					
Male	219	307	336	347	328	288	290	285	36	29	28	31	22	31	31	27	24	31	32	22	344
Female	107	131	149	141	143	125	126	150	14	11	16	10	11	16	10	10	14	8	7	15	142
Age																					
0-19	3	8	7	2	4	2	5	8	1	1	0	3	0	3	0	2	0	1	0	0	11
20-29	79	110	123	118	88	83	68	66	14	7	7	2	4	7	7	2	5	4	5	2	66
30-39	80	116	147	127	146	132	132	131	12	11	12	14	10	11	14	10	12	16	10	13	145
40-49	67	99	98	114	114	87	93	90	11	8	11	10	10	8	6	9	10	7	9	10	109
50-59	78	91	89	98	83	82	75	89	7	10	10	11	5	9	9	9	6	8	12	9	105
60+	19	14	21	29	36	29	43	50	5	3	4	1	4	9	5	5	5	3	3	3	50

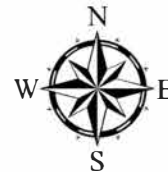
Overdose: Deaths by Town 1/2022 - 12/2022

Location is where the drug(s) is suspected to have been used.

This data is provided by the NH Office of the Chief Medical Examiner.
Finalized on: 7/11/2023

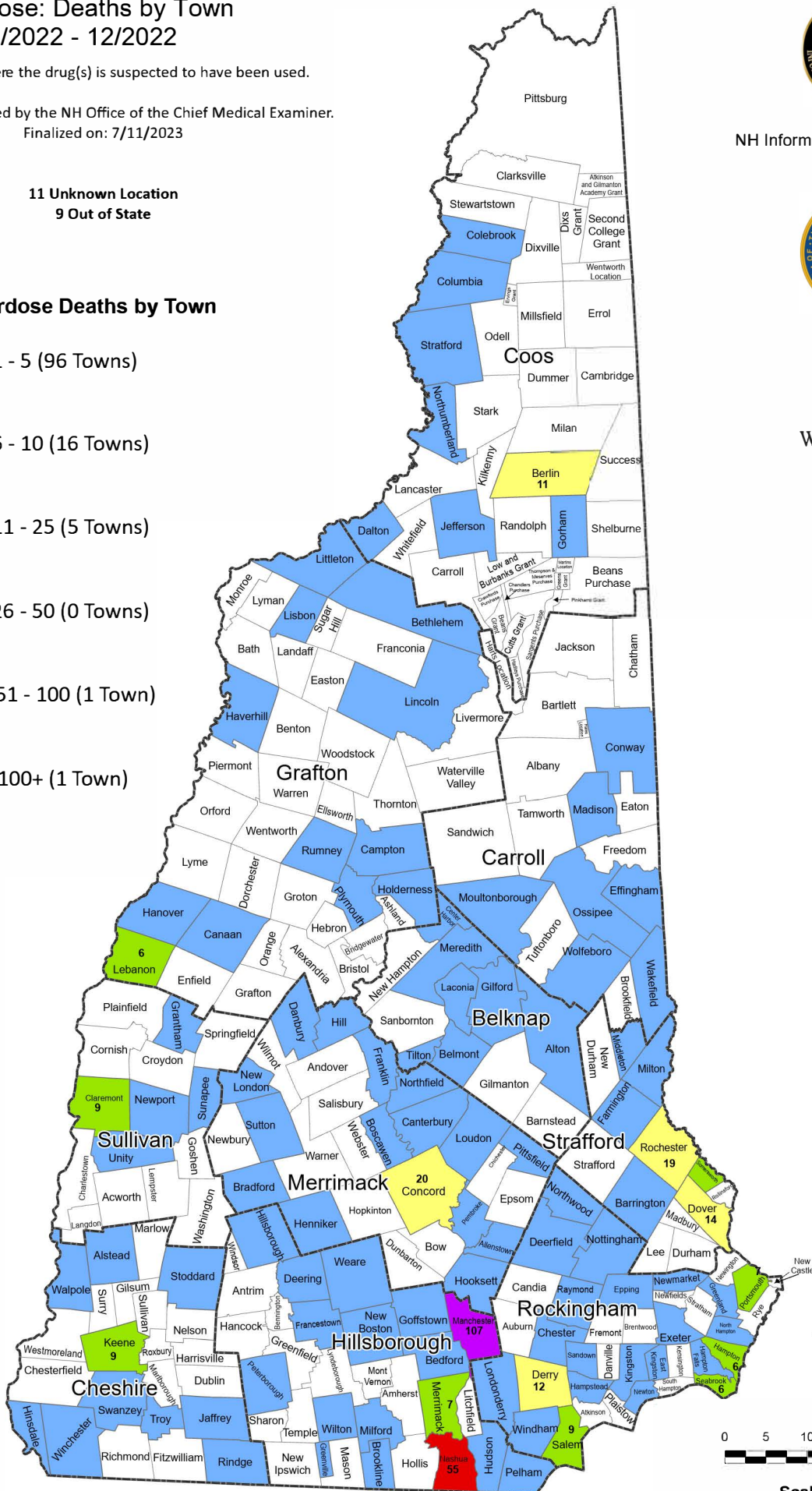


Prepared by:
NH Information & Analysis Center



**11 Unknown Location
9 Out of State**

Number of Overdose Deaths by Town

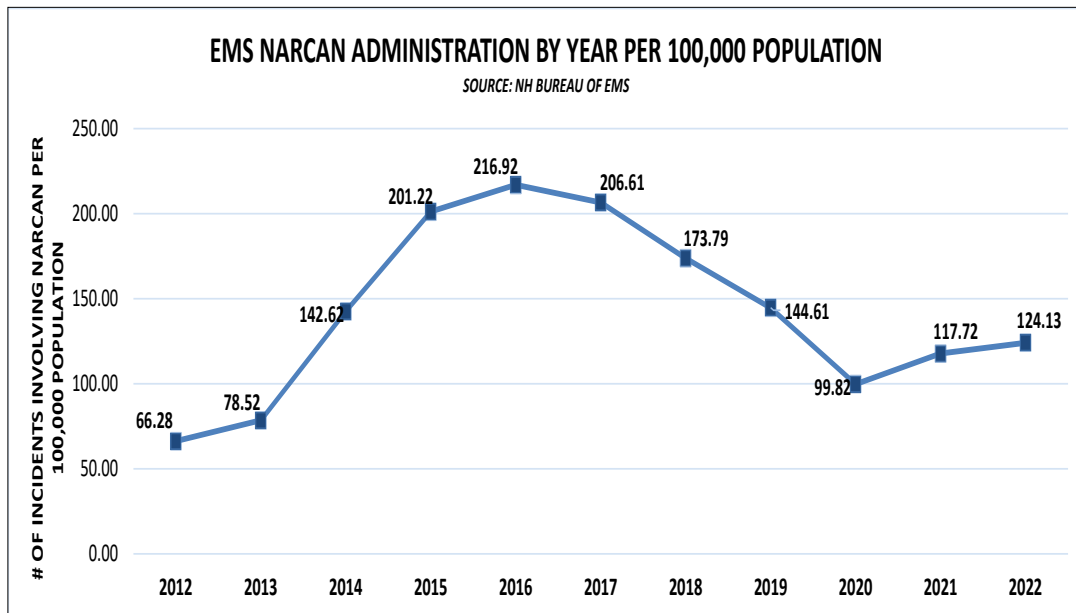


EMS Narcan Administration Incidents:

Data Source: NH Bureau of Emergency Medical Services (EMS)

Trends:

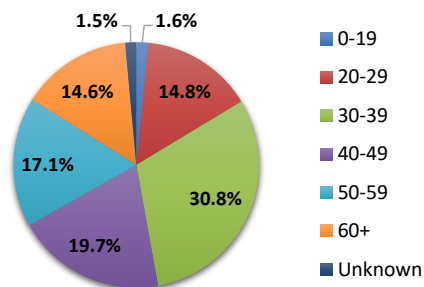
- EMS Narcan administration incidents increased by 5% from 2021 to 2022.
- For the fourth year in a row, EMS Narcan administrations were under 2,000 incidents. However, this is the third year in a row incidents have increased.
- In 2022, Coos County had the most EMS Narcan administration incidents per capita with 22.51 incidents per 10,000 population.
- Belknap and Hillsborough were the only counties to see a decrease in incidents from 2021 to 2022.
- Coos County saw the greatest increase in EMS Narcan administration from 2021 to 2022 with a 58% increase from 14.26 to 22.51 incidents per 10,000 population.
- The age group with the largest number of EMS Narcan administration incidents was 30-39, which represented nearly 31% of all incidents for 2022.



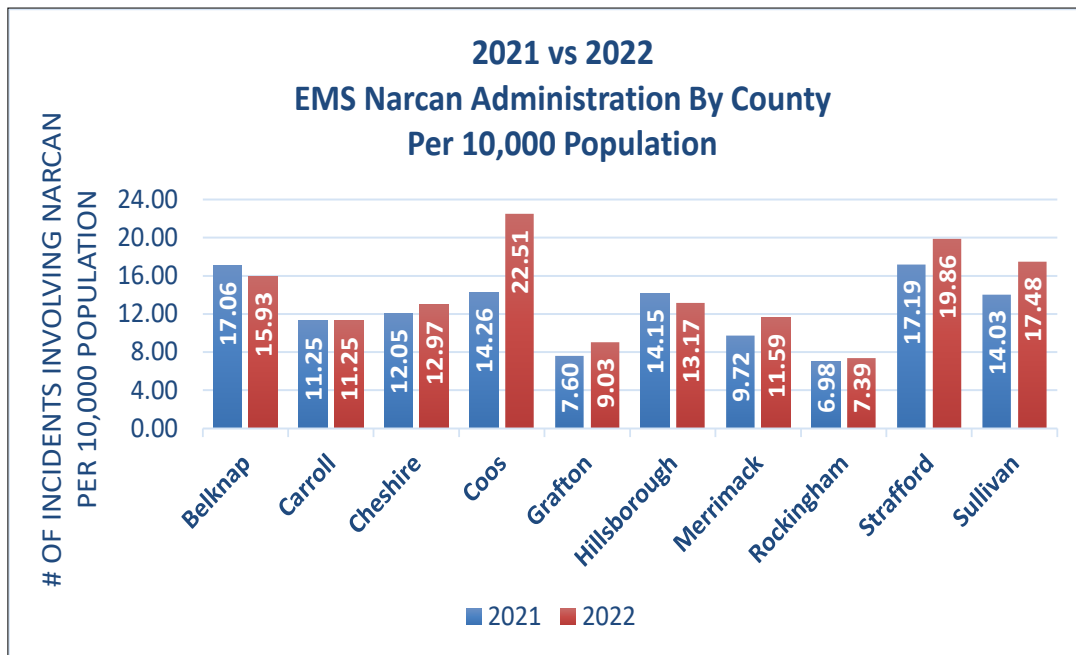
***** IMPORTANT DATA NOTES *****

- Narcan data in this report involves the number of incidents where Narcan was administered, NOT the number of doses of Narcan during a certain time period. Multiple doses may be administered during an incident.
- Narcan may be given for a decrease in alertness or respirations due to an overdose or unknown cause. Therefore, it cannot be concluded that all reported Narcan incidents actually involved drugs.

2022 EMS Narcan Administration by Age Group



Source: NH Bureau of EMS



EMS Narcan Administration Incidents (Continued):*Data Source: NH Bureau of Emergency Medical Services (EMS)*

	2014	2015	2016	2017	2018	2019	2020	2021	January	February	March	April	May	June	July	August	September	October	November	December	2022 Total
Total	1,892	2,677	2,895	2,774	2,357	1,959	1,375	1,635	149	102	146	122	149	160	168	187	144	131	132	127	1,717
County																					
Belknap	59	113	116	215	127	105	93	106	5	4	1	6	12	11	10	15	7	9	8	11	99
Carroll	52	80	91	68	62	68	37	57	4	5	5	6	4	6	4	6	4	4	5	4	57
Cheshire	65	79	144	104	112	109	87	92	9	4	8	7	6	15	11	14	6	3	12	4	99
Coos	41	65	64	73	38	35	40	45	5	8	4	7	5	9	9	5	10	5	3	1	71
Grafton	56	57	67	84	78	67	64	69	4	5	9	7	6	10	8	11	3	8	3	8	82
Hillsborough	757	1,139	1,209	1,140	1,044	773	455	605	59	34	56	34	43	53	59	59	50	37	43	36	563
Merrimack	185	228	233	310	247	226	161	151	17	14	13	18	16	14	17	16	19	12	10	14	180
Rockingham	380	501	489	503	375	320	214	223	23	13	18	21	25	12	24	23	22	16	18	21	236
Strafford	286	380	448	242	255	230	199	226	20	11	29	11	24	26	18	31	24	27	20	20	261
Sullivan	11	35	34	35	19	26	25	61	3	4	3	5	8	5	8	7	5	10	10	8	76
Gender																					
Male	1,185	1,736	1,916	1,879	1,503	1,342	954	1,133	107	66	100	79	116	120	125	139	102	90	95	89	1,228
Female	706	938	979	887	730	617	423	500	42	36	46	42	32	40	43	48	46	41	37	37	490
Other	0	0	0	0	0	0	1	1	0	0	0	1	1	1	0	0	2	0	0	1	6
Age																					
0-19	83	94	87	75	40	48	33	29	1	1	4	3	2	2	3	4	2	1	2	2	27
20-29	588	954	973	863	590	487	282	322	30	18	26	14	23	28	22	30	16	23	18	7	255
30-39	428	684	853	808	709	605	429	471	38	38	52	35	50	44	64	50	53	34	33	40	531
40-49	304	364	385	439	342	290	260	308	43	19	29	21	27	41	23	35	27	25	23	26	339
50-59	233	314	327	326	306	285	177	277	13	16	20	28	21	26	25	42	27	20	27	30	295
60+	246	256	253	246	237	242	190	223	24	10	13	19	23	17	27	22	22	27	28	20	252
Age or Gender Not Given	10	11	17	20	10	14	4	5	0	0	2	2	3	3	4	4	3	1	1	2	25

EMS/Narcan Administration by Town

1/2022 - 12/2022

Data Source: New Hampshire Bureau of EMS



Prepared by:
NH Information & Analysis Center



INDEX

Belknap

1 - Center Harbor

Carroll

2 - Hales Location

3 - Harts Location

Coos

4 - Hadleys Purchase

5 - Beans Grant

6 - Cutts Grant

7 - Sargents Purchase

8 - Pinkhams Grant

9 - Crawfords Purchase

10 - Chandlers Purchase

11 - Low & Burbanks Grant

12 - Thompson & Meserves Purchase

13 - Greens Grant

14 - Martins Location

15 - Ervings Grant

16 - Wentworth Location

17 - Atkinson & Gilman Academy Grant

Hillsborough

18 - Bennington

Rockingham

19 - South Hampton

20 - Seabrook

21 - East Kington

22 - Kensington

23 - Hampton Falls

24 - Hampton

25 - North Hampton

26 - Rye

27 - Portsmouth

28 - New Castle

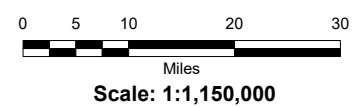
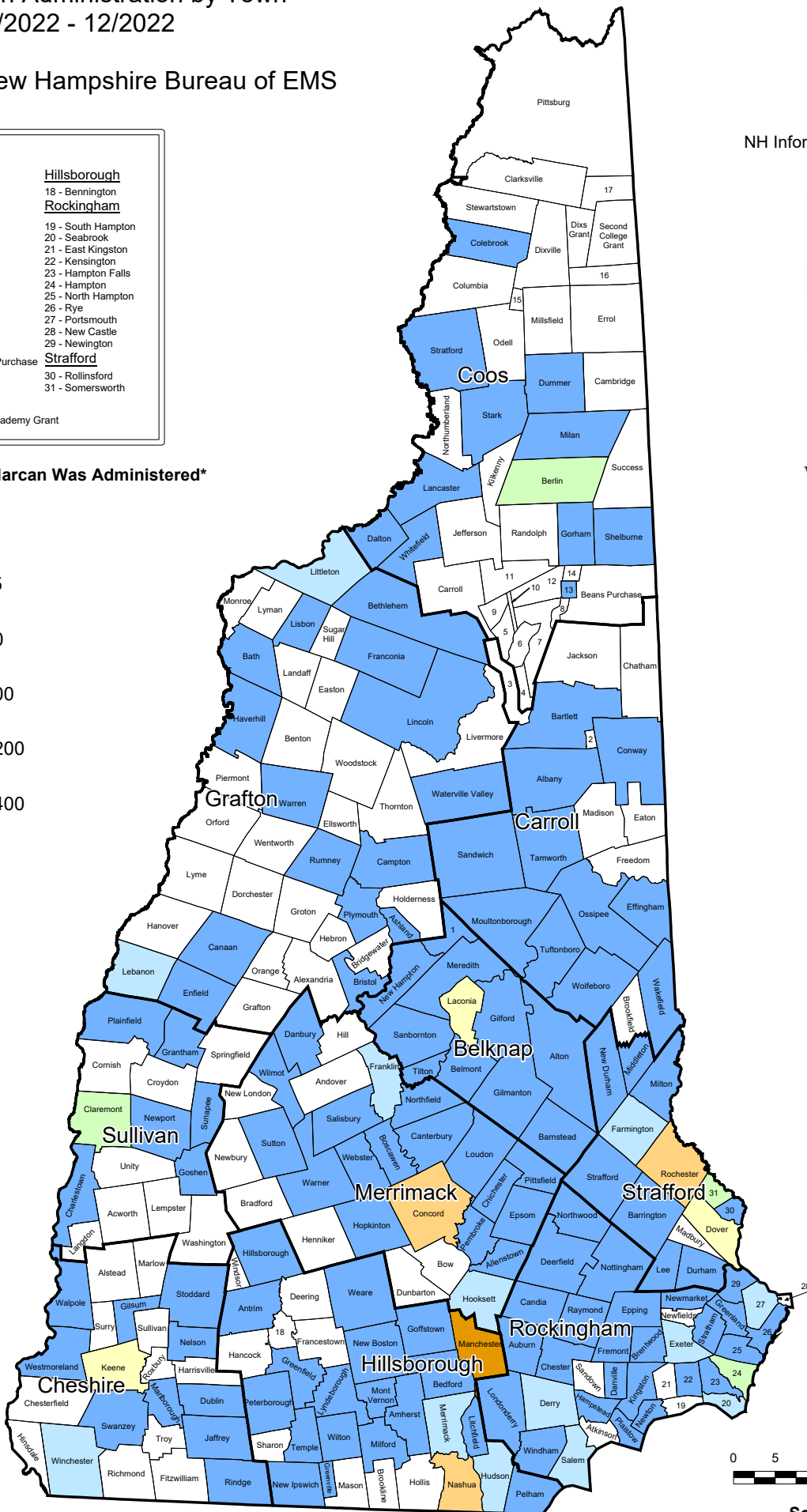
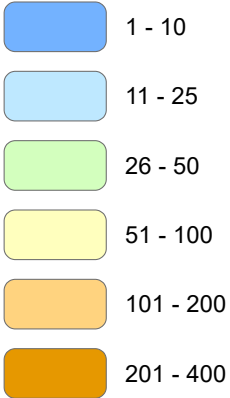
29 - Newington

Strafford

30 - Rollinsford

31 - Somersworth

Incidents Where Narcan Was Administered



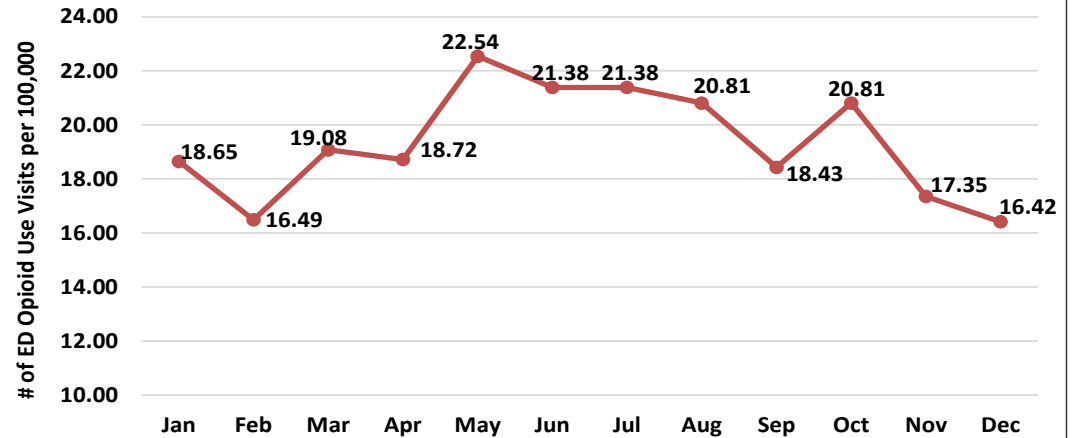
Opioid Related Emergency Department Visits:

Data Source: NH Division of Public Health Services

Trends:

- Opioid related emergency department visits decreased by 1.9% from 2021 to 2022.
- Residents from Coos County had the most opioid related ED visits per capita with 42.47 visits per 10,000 population in 2022.
- Based on absolute numbers, residents from Hillsborough County had the most opioid related ED visits with 1,068 visits in 2022, more than double the next closest of 507 in Rockingham County.
- Coos County had the greatest percentage increase in ED visits, with a 81% increase.
- In 2022, the age group with the largest number of opioid related ED visits was 30-39 which represented 25% of all opioid related ED visits, followed by 20-29 with 18%.

2022 Emergency Department Opioid Use Visits by Month Per 100,000 Population

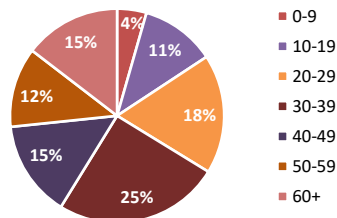


Source: NH Division of Public Health Services

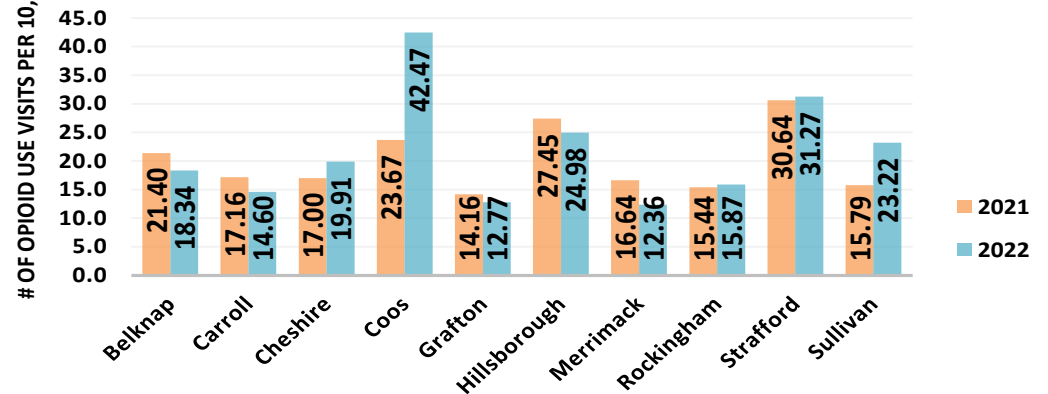
***** IMPORTANT DATA NOTES *****

- Data being reported for 2020 has different collection criteria than previous months/years. Due to the new collection criteria, the data is no longer comparable to previous data.
- County represents where the opioid use patient resides.
- These data include data on suspected overdoses categorized as "all drug," "all opioid," "heroin," and "all stimulant." This report uses key words and ICD-10 associated overdose codes that CDC has defined as tailored to nonfatal opioid overdoses.
- These data are now collected using criteria the CDC established for their Overdose Data to Action (OD2A) grant "making this report more transparent."

2022 Emergency Department Opioid Use Visits by Age



2021 vs 2022 Emergency Department Opioid Use Visit by County per 10,000 Population



SOURCE: NH DIVISION OF PUBLIC HEALTH SERVICES

Opioid Related Emergency Department Visits (Continued):*Data Source: NH Division of Public Health Services*

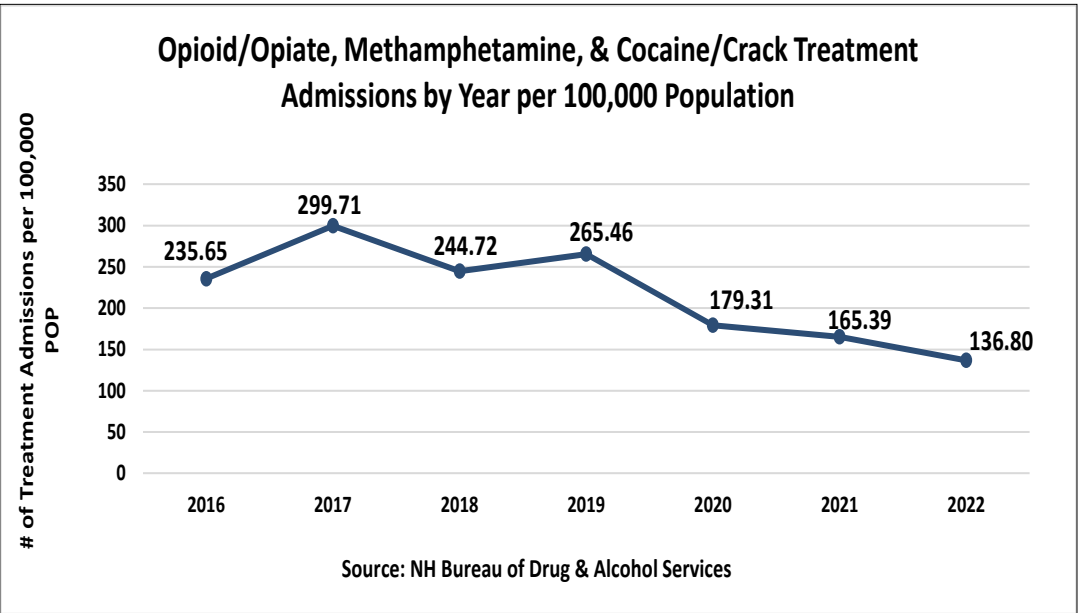
Important Note Data being reported starting January 2020 has different collection criteria than previous months/years. Due to the new collection criteria, data from previous years is no longer comparable and has been removed.															
	2020	2021	January	February	March	April	May	June	July	August	September	October	November	December	2022 Total
Total	2,915	3,284	259	229	265	260	313	297	297	289	256	289	241	228	3,223
County															
Belknap	111	133	9	7	4	11	8	13	7	13	7	10	11	14	114
Carroll	77	86	2	2	11	5	6	7	10	7	8	9	4	3	74
Cheshire	136	130	9	15	13	11	14	19	14	13	14	12	9	9	152
Coos	74	74	8	12	7	11	9	21	18	9	14	10	7	8	134
Grafton	88	129	8	12	10	10	13	8	7	10	10	8	9	11	116
Hillsborough	993	1,161	88	81	82	88	104	101	110	99	75	87	84	69	1,068
Merrimack	218	256	21	20	19	17	11	17	12	12	16	24	10	13	192
Rockingham	425	485	48	37	45	42	45	43	46	33	40	43	47	38	507
Strafford	390	401	33	18	36	32	47	37	27	46	39	40	30	26	411
Sullivan	65	68	7	5	9	7	14	9	14	9	8	6	6	7	101
Out of State	338	361	26	20	29	26	42	22	32	38	25	40	24	30	354
Gender															
Male	1,625	1,787	160	130	141	107	180	176	167	169	96	166	96	88	1,676
Female	1,290	1,493	98	99	123	153	133	121	130	119	159	123	144	140	1,542
Unknown	0	4	1	0	1	0	0	0	0	1	1	0	1	0	5
Age															
0-9	163	156	9	9	12	14	12	9	22	12	8	11	12	13	143
10-19	335	381	26	22	46	25	27	36	22	32	30	38	34	26	364
20-29	690	717	63	39	52	44	61	63	58	44	38	44	43	32	581
30-39	657	775	67	70	55	60	89	64	81	77	67	70	47	60	807
40-49	391	434	31	25	38	53	37	47	37	43	39	45	40	34	469
50-59	313	393	28	32	25	34	38	32	33	35	33	38	33	28	389
60+	366	428	35	32	37	30	49	46	44	46	41	43	32	35	470

Treatment Admissions:

Data Source: NH Bureau of Drug & Alcohol Services

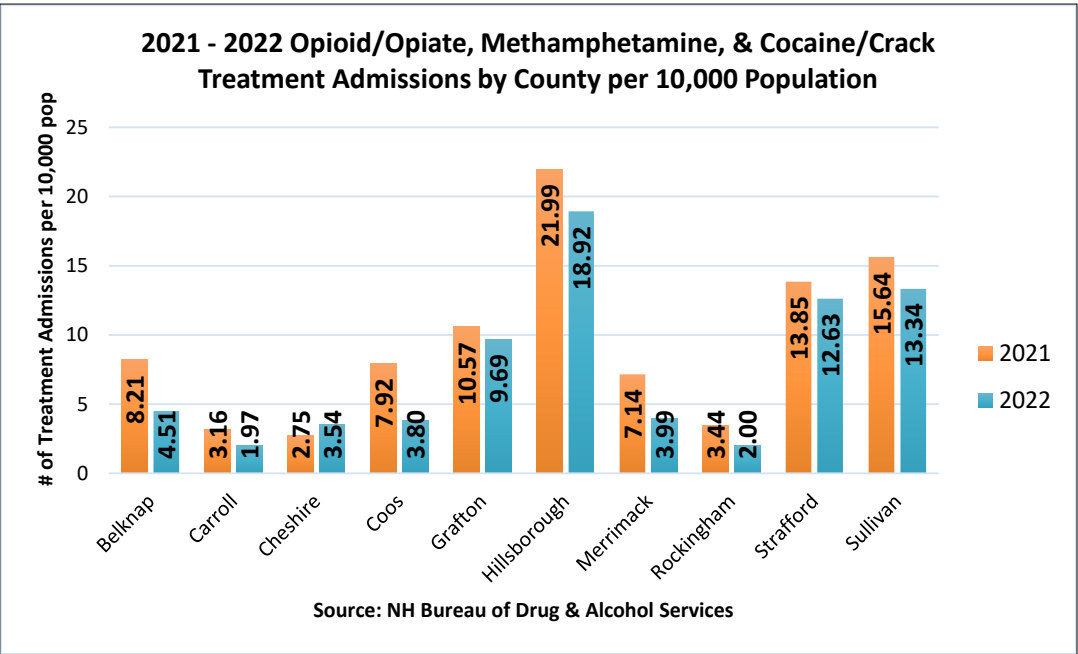
Trends:

- Opioid/opiate, methamphetamine, & cocaine/crack treatment admissions decreased by 17% from 2021 to 2022.
- In 2022, residents from Hillsborough County were admitted most often for opioid/opiate, methamphetamine, & cocaine/crack treatment per capita with 18.92 admissions per 10,000 population.
- Based on absolute numbers, Hillsborough County had the most residents admitted for opioid/opiate, methamphetamine, & cocaine/crack treatment with 809 admissions in 2022, a 14% decrease from 2021, where Hillsborough County also had the most residents admitted.
- In 2022, 71% of treatment admissions for the referenced substances involved opioid/opiates.



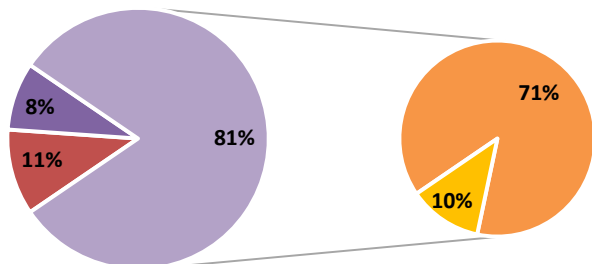
***** IMPORTANT DATA NOTES *****

- County represents where the patient resides.
- These data represent treatment admissions to state funded facilities.



2022 Percentage of Opioid/Opium (Rx Opiate, Heroin/Fentanyl), Methamphetamine, & Cocaine/Crack Treatment Admissions

■ Methamphetamine ■ Cocaine/Crack ■ Heroin/Fentanyl ■ Rx Opiates



Source: NH Bureau of Drug & Alcohol Services

Treatment data includes opioid/opiate, methamphetamine, & cocaine/crack admissions

Treatment Admissions (Continued):

Data Source: NH Bureau of Drug & Alcohol Services

	2017	2018	2019	2020	2021	January	February	March	April	May	June	July	August	September	October	November	December	2022 Total
Total	4,024	3,319	3,609	2,470	2,297	167	181	188	167	171	144	132	131	172	152	151	144	1,900
County																		
Belknap	156	114	152	70	51	6	2	2	4	1	0	1	1	4	5	0	2	28
Carroll	43	38	36	27	16	0	0	2	1	2	1	0	0	2	0	0	2	10
Cheshire	60	32	42	30	21	0	1	1	1	0	1	2	0	5	3	2	11	27
Coos	45	42	66	41	25	1	1	2	1	2	0	1	0	1	2	0	1	12
Grafton	122	129	140	112	96	8	7	7	13	8	5	6	6	3	11	7	7	88
Hillsborough	1,044	797	1,052	764	940	80	82	82	52	75	63	59	55	71	69	64	57	809
Merrimack	342	214	306	154	111	8	6	5	6	5	5	2	5	5	5	3	7	62
Rockingham	319	233	216	151	110	5	4	6	5	5	7	2	8	8	3	8	3	64
Strafford	336	322	325	227	182	9	11	9	15	26	10	15	12	14	15	14	16	166
Sullivan	25	14	29	50	68	2	10	6	3	7	10	7	8	3	1	1	0	58
Out of State	129	16	65	63	50	1	5	7	4	5	5	3	0	3	3	1	0	37
Not Provided	1,403	1,368	1,180	781	627	47	52	59	62	35	37	34	36	53	35	51	38	539
Gender																		
Male	2,419	1,891	1,964	1,442	1,404	113	114	124	101	89	86	79	78	98	87	92	105	1,166
Female	1,602	1,425	1,641	1,022	892	54	67	62	66	82	58	53	53	73	65	59	39	731
Transgender	2	3	4	6	1	0	0	2	0	0	0	0	0	1	0	0	0	3
Age																		
<18	7	2	8	1	0	0	0	0	0	0	0	0	0	0	0	0	0	0
18-25	821	581	537	309	211	18	17	24	12	12	9	7	18	16	18	9	12	172
>26	3,196	2,736	3,064	2,160	2,086	149	164	164	155	159	135	125	113	156	134	142	132	1,728