

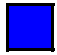


RABIES MONTHLY REPORT

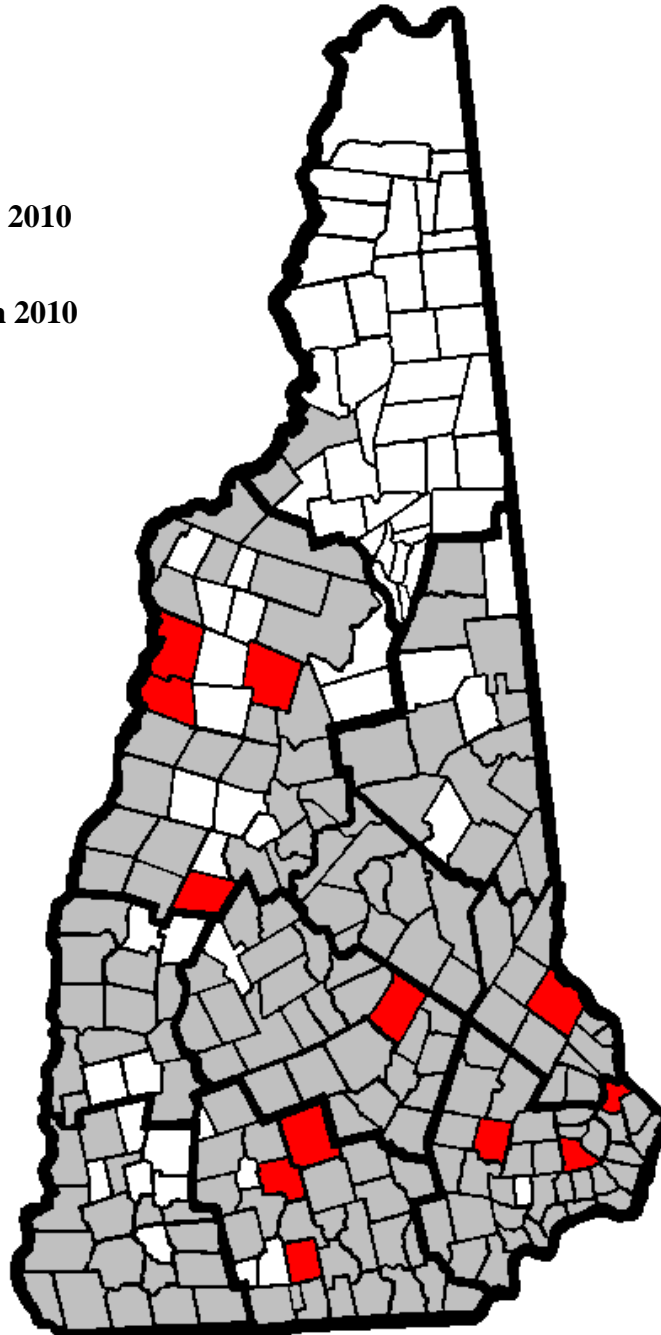


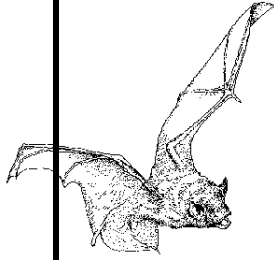
NH Division of Public Health Services
Public Health Laboratories
29 Hazen Drive Concord NH 03301

PROGRESSION OF RABIES EPIZOOTIC BY TOWN

December 31, 2010

-  First Reported in 2010
-  Previously and in 2010
-  1992 - 2009





RABIES MONTHLY REPORT

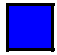


NH Division of Public Health Services

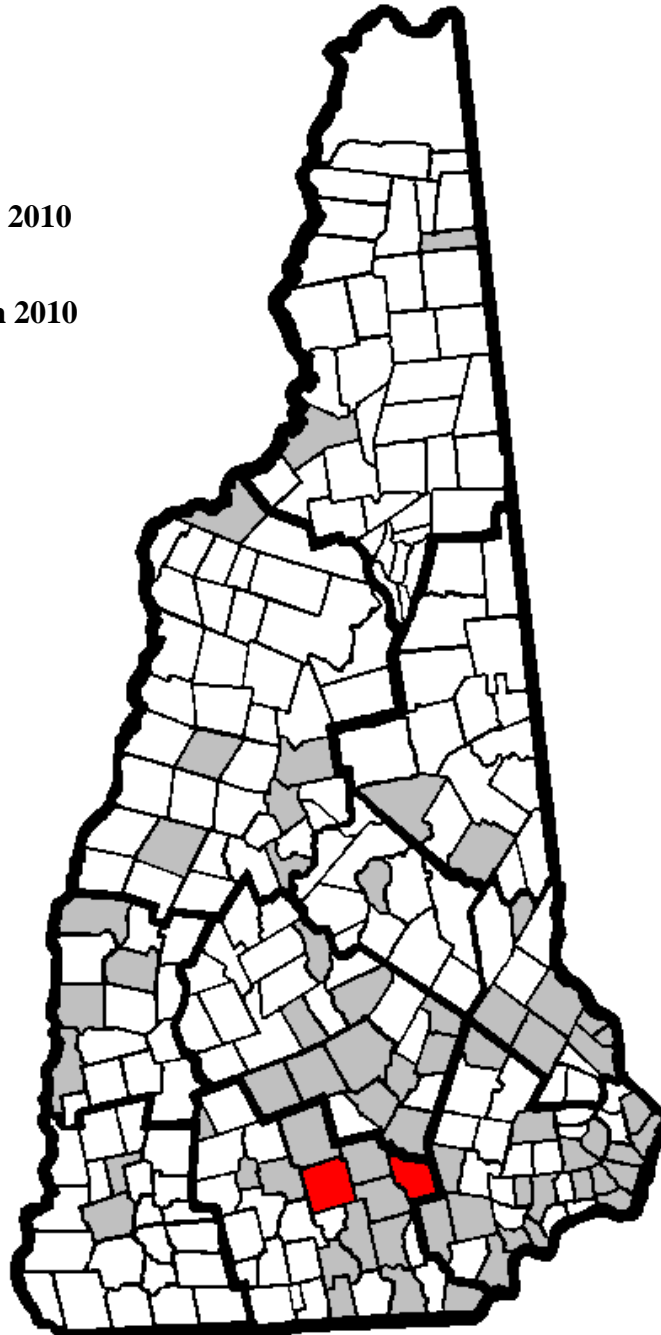
Public Health Laboratories

29 Hazen Drive Concord NH 03301

OCCURRENCE OF BAT RABIES BY TOWN

December 31, 2010

-  First Reported in 2010
-  Previously and in 2010
-  1992 - 2009



RABIES MONTHLY REPORT



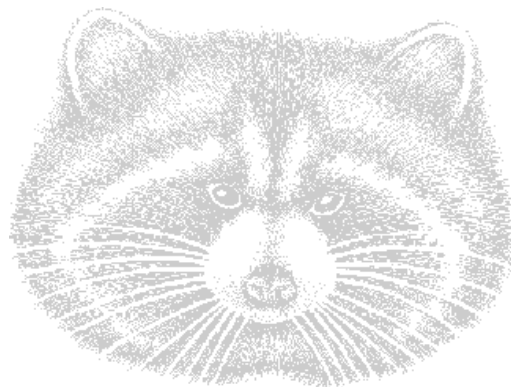
NH Division of Public Health Services

Public Health Laboratories

29 Hazen Drive Concord NH 03301

POSITIVE ANIMAL RABIES IN NEW HAMPSHIRE - 2010

<u>DATE</u>	<u>LAB#</u>	<u>ANIMAL</u>	<u>VARIANT</u>	<u>TOWN/CITY</u>	<u>COUNTY</u>
1/7/10	10-03	CAT	R	NEWINGTON	ROCKINGHAM
1/8/10	10-05	RACCOON	R	WEARE	HILLSBOROUGH
1/25/10	10-18	FOX (Gray)	R	EXETER	ROCKINGHAM
3/4/10	10-47	CAT	R	GRAFTON	GRAFTON
4/30/10	10-102	RACCOON	R	ROCHESTER	STRAFFORD
5/14/10	10-122	WOODCHUCK	R	ROCHESTER	STRAFFORD
5/24/10	10-133	RACCOON	R	FRANCESTOWN	HILLSBOROUGH
7/17/10	10-224	RACCOON	R	WILTON	HILLSBOROUGH
7/28/10	10-250	BAT	--	NEW BOSTON	HILLSBOROUGH
8/4/10	10-268	SKUNK	R	NORTH HAVERHILL	GRAFTON
8/12/10	10-290	SKUNK	R	PIERMONT	GRAFTON
8/13/10	10-291	SKUNK	R	LOUDON	MERRIMACK
8/18/10	10-301	FISHER		RAYMOND	ROCKINGHAM
8/24/10	10-311	SKUNK	R	PIERMONT	GRAFTON
9/3/10	10-328	BAT (Big Brown)	--	MANCHESTER	HILLSBOROUGH
11/1/10	10-387	RACCOON	R	WEARE	HILLSBOROUGH
12/17/10	10-425	SKUNK	R	WOODSTOCK	GRAFTON



TOTAL NUMBER OF SPECIMENS

	<u>2010</u>		<u>2009</u>	
	<u>December</u>	<u>YTD</u>	<u>December</u>	<u>YTD</u>
Received	23	433	25	543
Negative	22	411	24	503
Positive	1	17	1	33
Unsatisfactory	0	5	0	7

R = RACCOON VARIANT RABIES STRAIN