

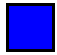


RABIES MONTHLY REPORT

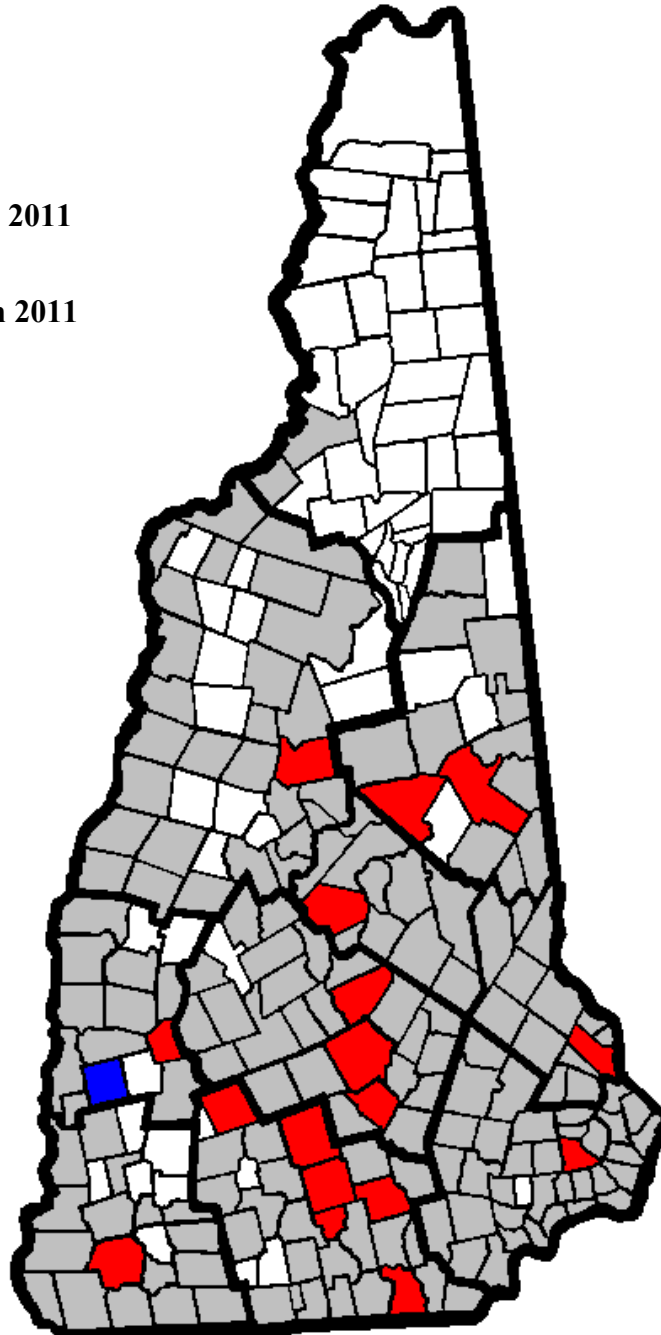


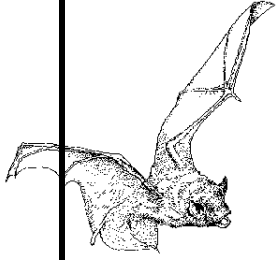
NH Division of Public Health Services
Public Health Laboratories
29 Hazen Drive Concord NH 03301

PROGRESSION OF RABIES EPIZOOTIC BY TOWN

December 31, 2011

-  First Reported in 2011
-  Previously and in 2011
-  1992 - 2010





RABIES MONTHLY REPORT

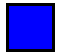


NH Division of Public Health Services

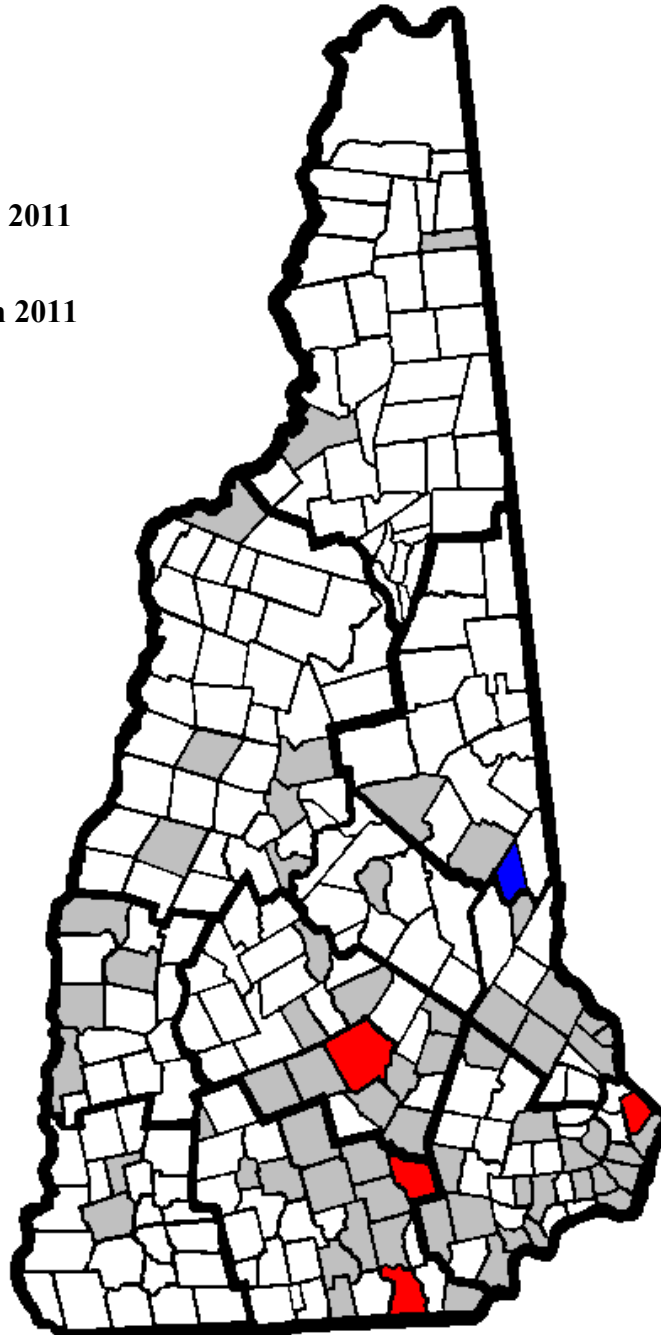
Public Health Laboratories

29 Hazen Drive Concord NH 03301

OCCURRENCE OF BAT RABIES BY TOWN

December 31, 2011

-  First Reported in 2011
-  Previously and in 2011
-  1992 - 2010



RABIES MONTHLY REPORT



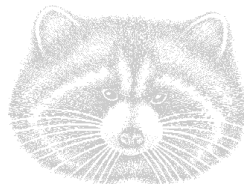
NH Division of Public Health Services

Public Health Laboratories

29 Hazen Drive Concord NH 03301

POSITIVE ANIMAL RABIES IN NEW HAMPSHIRE - 2011

<u>DATE</u>	<u>ANIMAL</u>	<u>VARIANT</u>	<u>TOWN/CITY</u>	<u>COUNTY</u>
1/24/11	RACCOON	R	SWANZEY	CHESHIRE
3/3/11	BAT (Big Brown)	--	NASHUA	HILLSBOROUGH
3/25/11	RACCOON	R	HILLSBOROUGH	HILLSBOROUGH
4/1/11	RACCOON	R	NEW BOSTON	HILLSBOROUGH
4/12/11	RACCOON	R	DOVER	STRAFFORD
4/16/11	FOX (Gray)	R	NASHUA	HILLSBOROUGH
6/2/11	FOX (Gray)	R	BEDFORD	HILLSBOROUGH
6/6/11	RACCOON	R	CAMPTON	GRAFTON
7/6/11	BAT (Big Brown)	--	CONCORD	MERRIMACK
7/8/11	RACCOON	R	WEARE	HILLSBOROUGH
7/12/11	BAT (Big Brown)	--	MANCHESTER	HILLSBOROUGH
7/15/11	RACCOON	R	SANBORNTON	BELKNAP
8/11/11	FOX (Gray)	R	CONCORD	MERRIMACK
8/15/11	BAT (Big Brown)	--	BROOKFIELD	CARROLL
8/15/11	SKUNK	R	GOSHEN	SULLIVAN
8/18/11	BAT (Big Brown)	--	PORTSMOUTH	ROCKINGHAM
* 9/6/11	SKUNK	R	ACWORTH	SULLIVAN
9/14/11	RACCOON	R	MONT VERNON	HILLSBOROUGH
9/15/11	BAT (Big Brown)	--	MANCHESTER	HILLSBOROUGH
11/4/11	CAT	R	MOULTONBOROUGH	CARROLL
11/21/11	SKUNK	R	EXETER	ROCKINGHAM
11/28/11	RACCOON	R	NEW BOSTON	HILLSBOROUGH
12/2/11	RACCOON	R	OSSIPEE	CARROLL
12/8/11	SKUNK	R	CANTERBURY	MERRIMACK
12/27/11	RACCOON	R	BOW	MERRIMACK



* NEW TOWN : FIRST LABORATORY CONFIRMED POSITIVE EPIZOOTIC ANIMAL

TOTAL NUMBER OF SPECIMENS

	<u>2011</u>		<u>2010</u>	
	<u>December</u>	<u>YTD</u>	<u>December</u>	<u>YTD</u>
Received	22	437	23	433
Negative	19	406	22	411
Positive	3	25	1	17
Unsatisfactory	0	6	0	5

R = RACCOON VARIANT RABIES STRAIN